

Groundwater Levels

Wells	Number of Wells	Water Level Change From Spring 2022 to Fall 2022	Water Level From Baseline	Fall 2021 to Fall 2022	Average Fall to Spring Recharge
Gage County	27	-7.46	-7.91	-5.45	1.84
Jefferson County	24	-6.23	-11.18	-3.45	2.98
Saline County	42	-4.35	-3.95	-2.54	1.65
Dedicated Monitoring Wells	45	-7.45	-6.70	-3.93	2.85
Blue River Compact Wells	32	-3.00	-7.79	-2.07	1.30
District-Wide	170	-5.70	-7.51	-3.49	2.12

Number of wells at lowest level

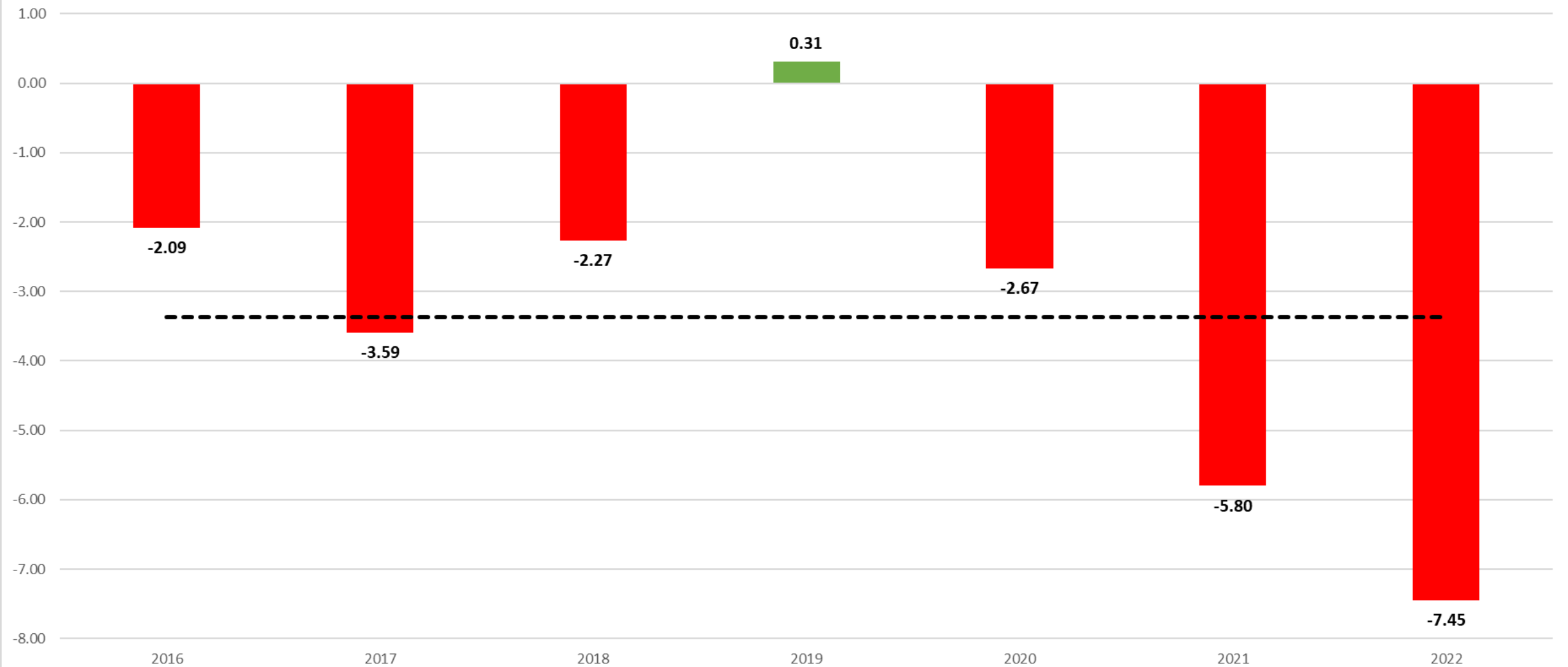
Gage: 9
Jefferson: 8
Saline: 1
Monitoring wells: 27

Total: 45

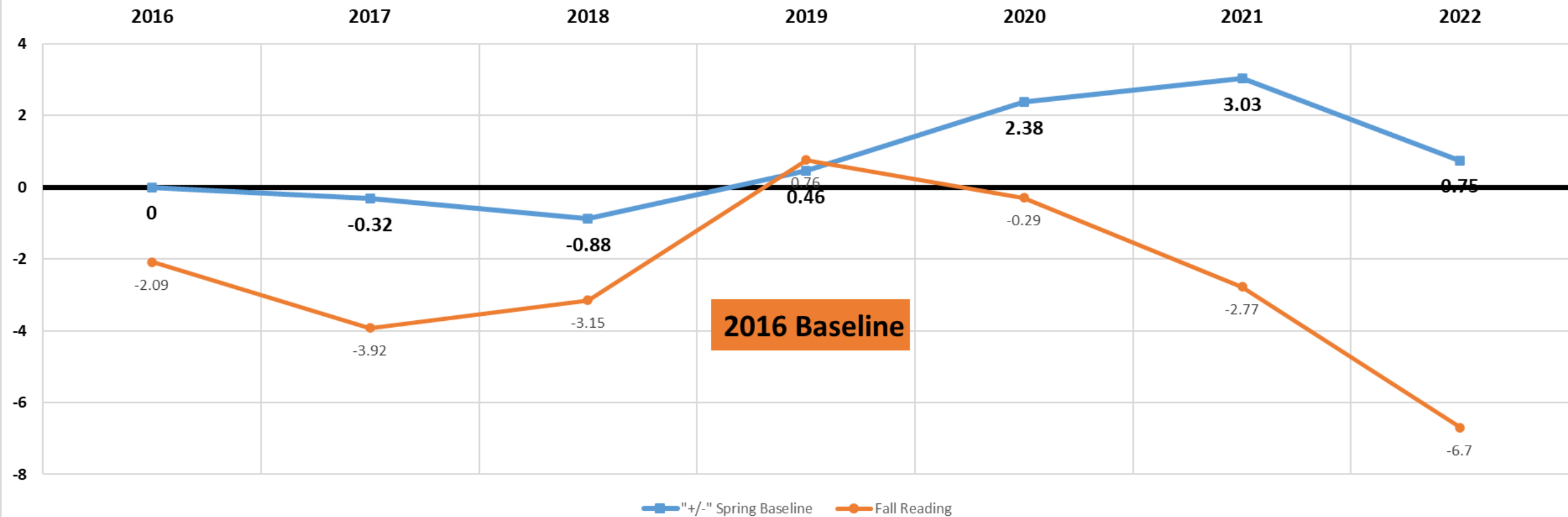
Average Fall 2022 level from Baseline compared to Average Fall 2012 level from Baseline

Gage: -2.22
Jefferson: -1.19
Saline: 2.69
BRC: 2.00

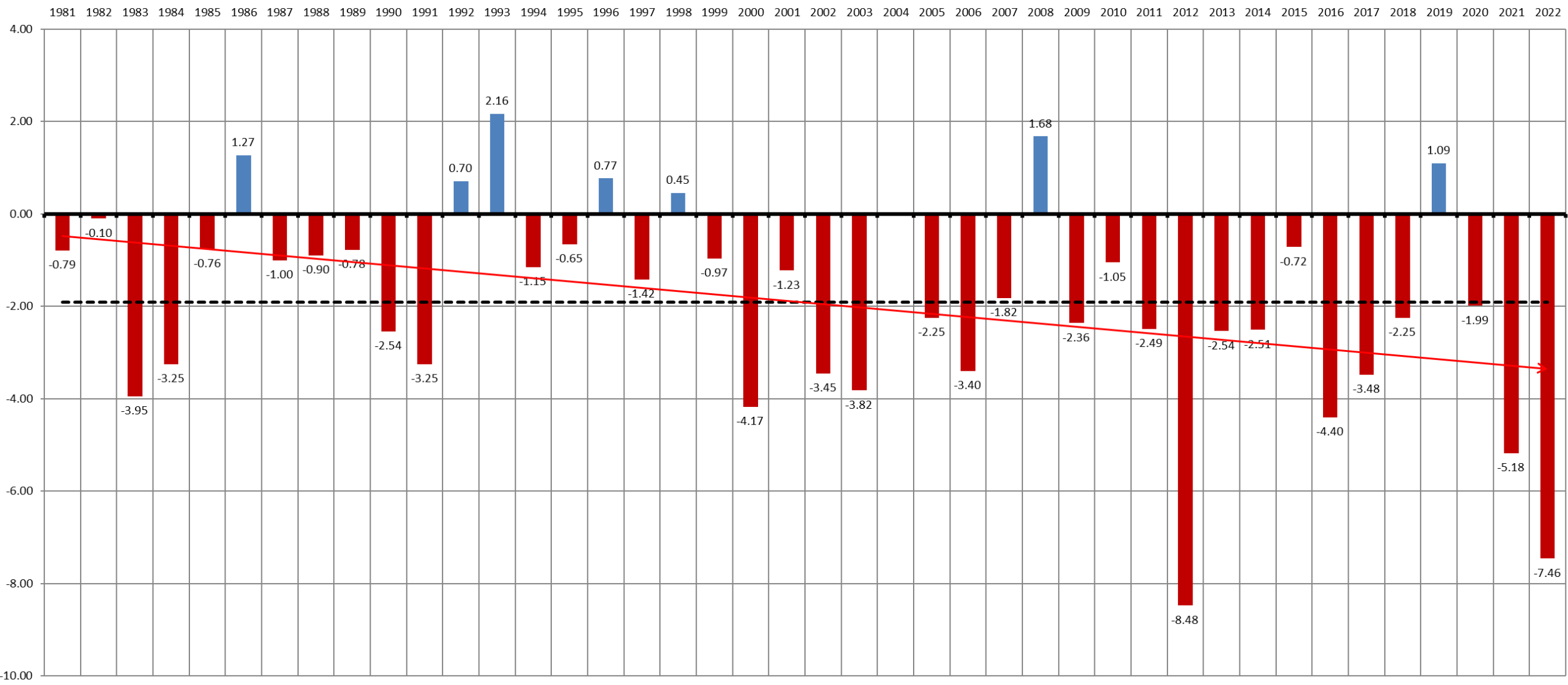
Dedicated Monitoring Well Spring to Fall Change



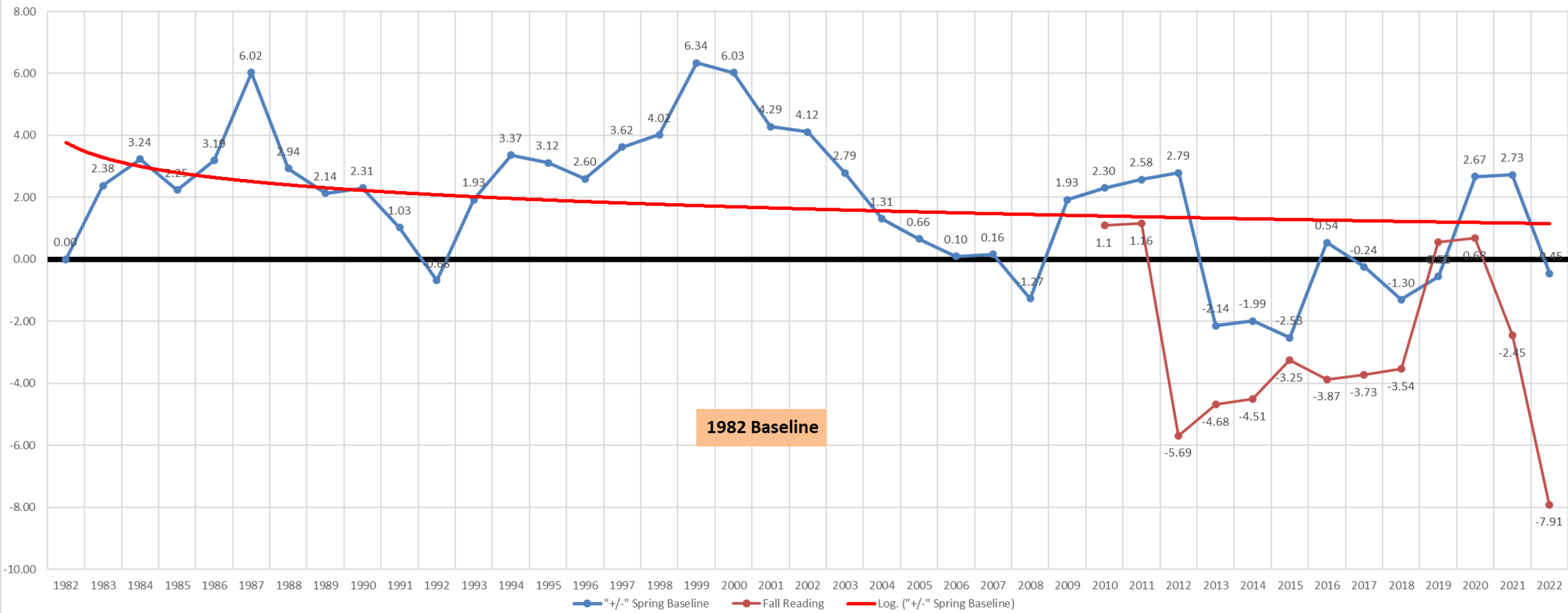
Dedicated Monitoring Well Static Water Level Average From Baseline



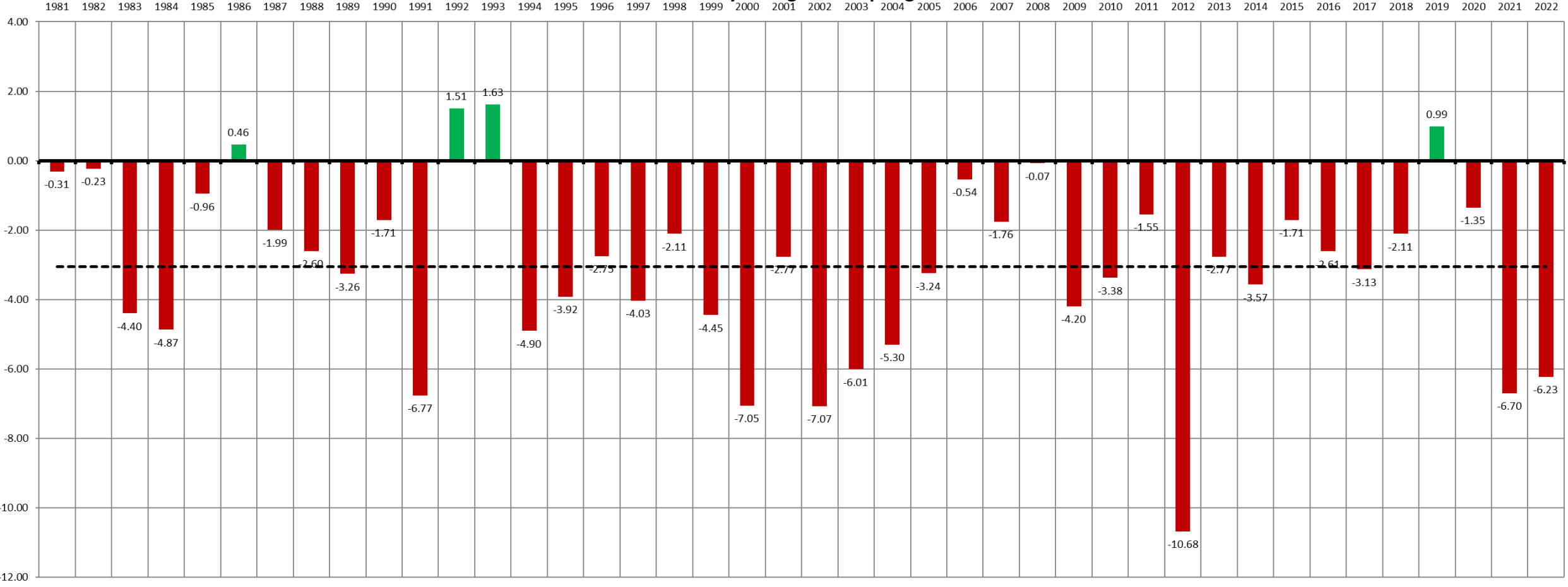
Gage Change From Spring to Fall



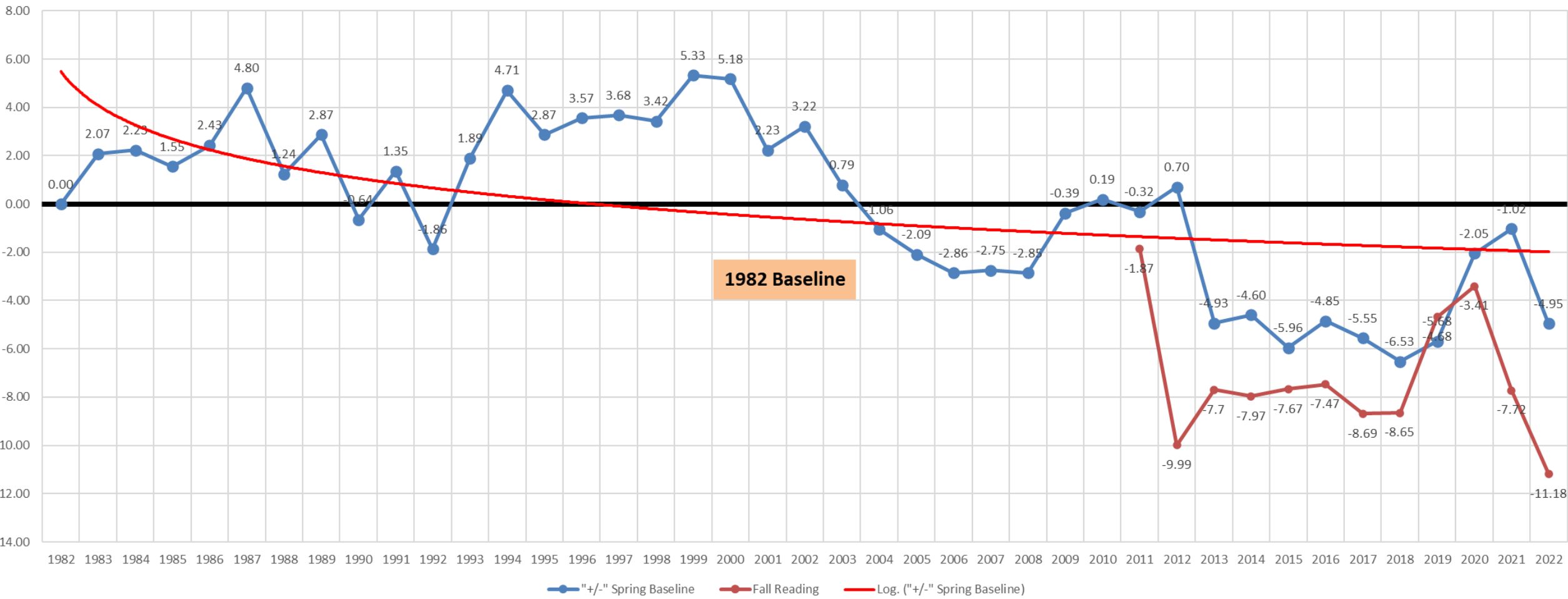
Gage County Level from 1982 Spring Baseline



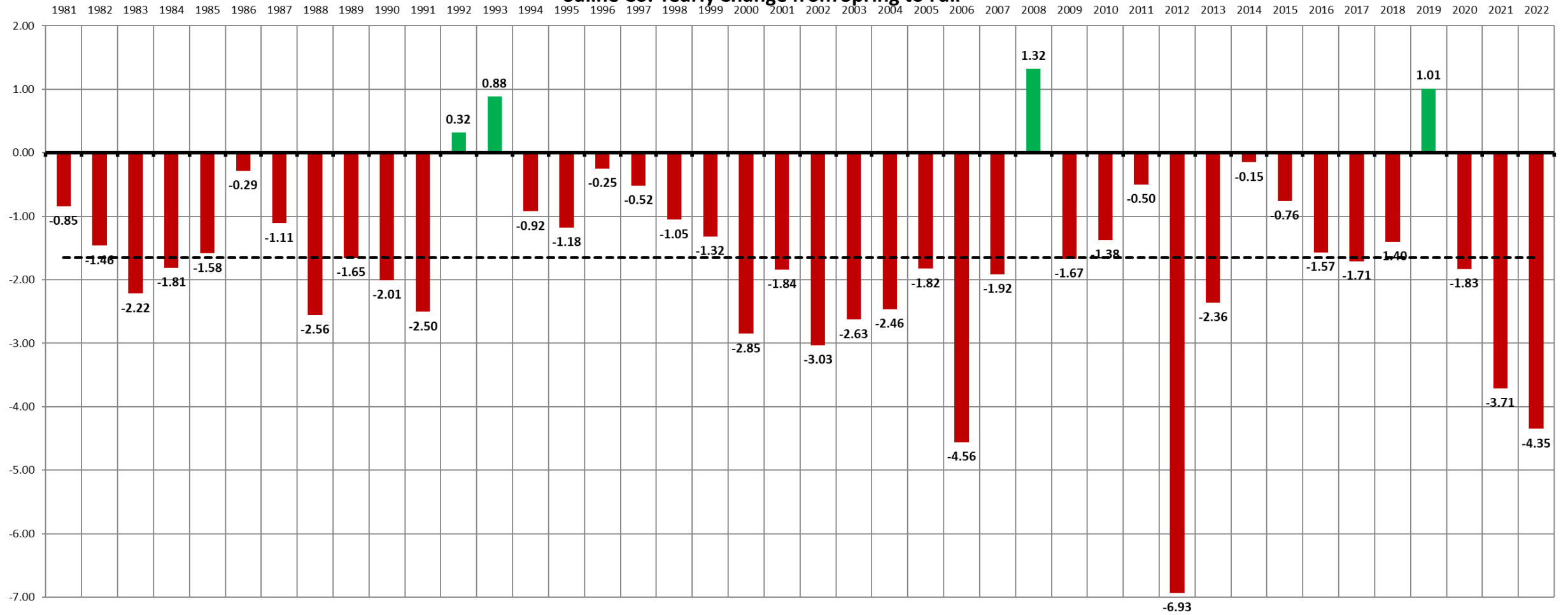
Jefferson Co. Yearly Change from Spring to Fall



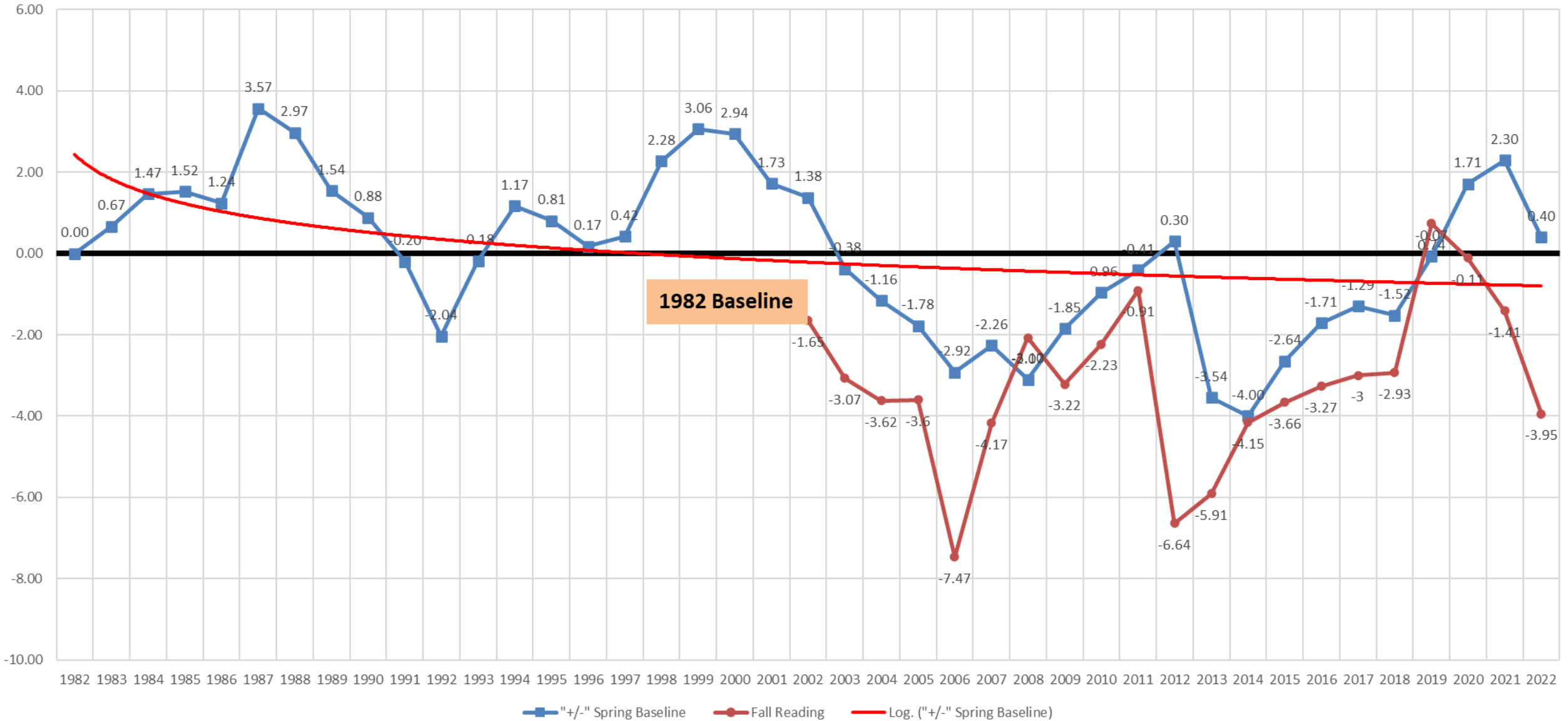
Jefferson County Level from 1982 Spring Baseline



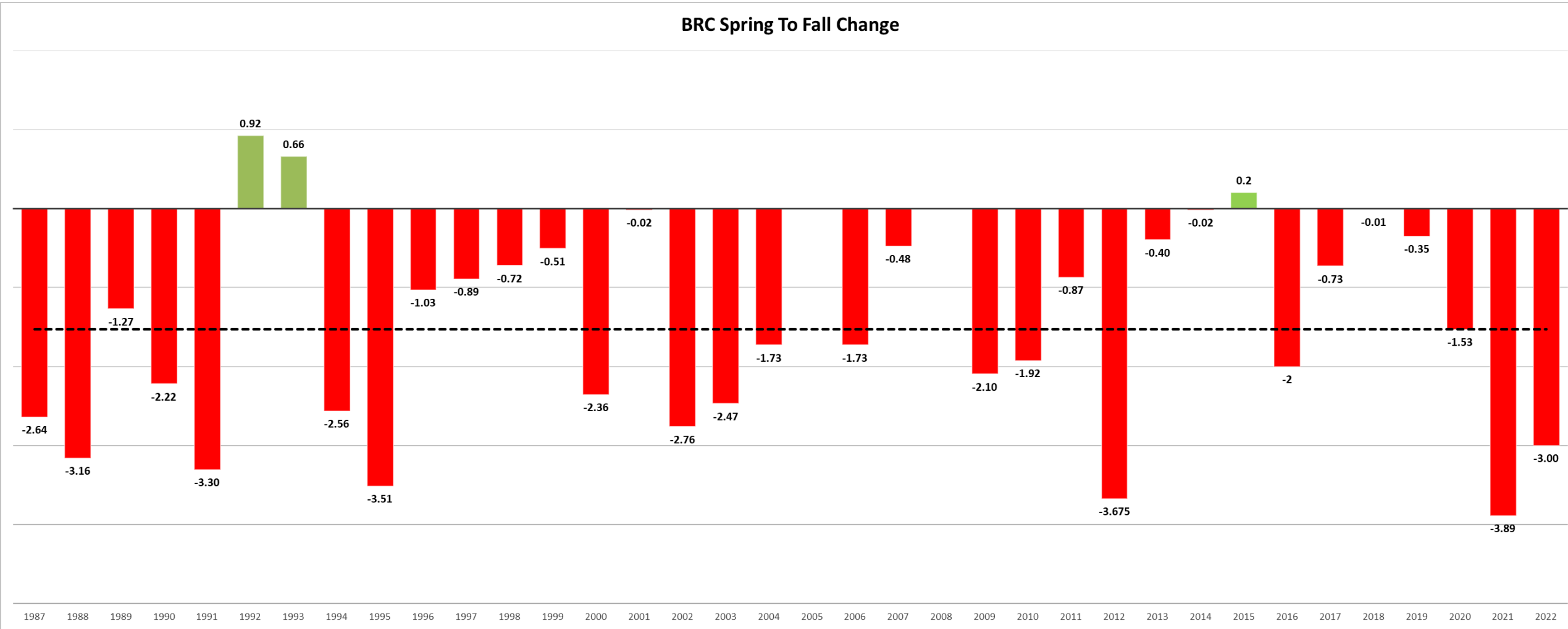
Saline Co. Yearly Change from Spring to Fall



Saline County Level from 1982 Spring Baseline



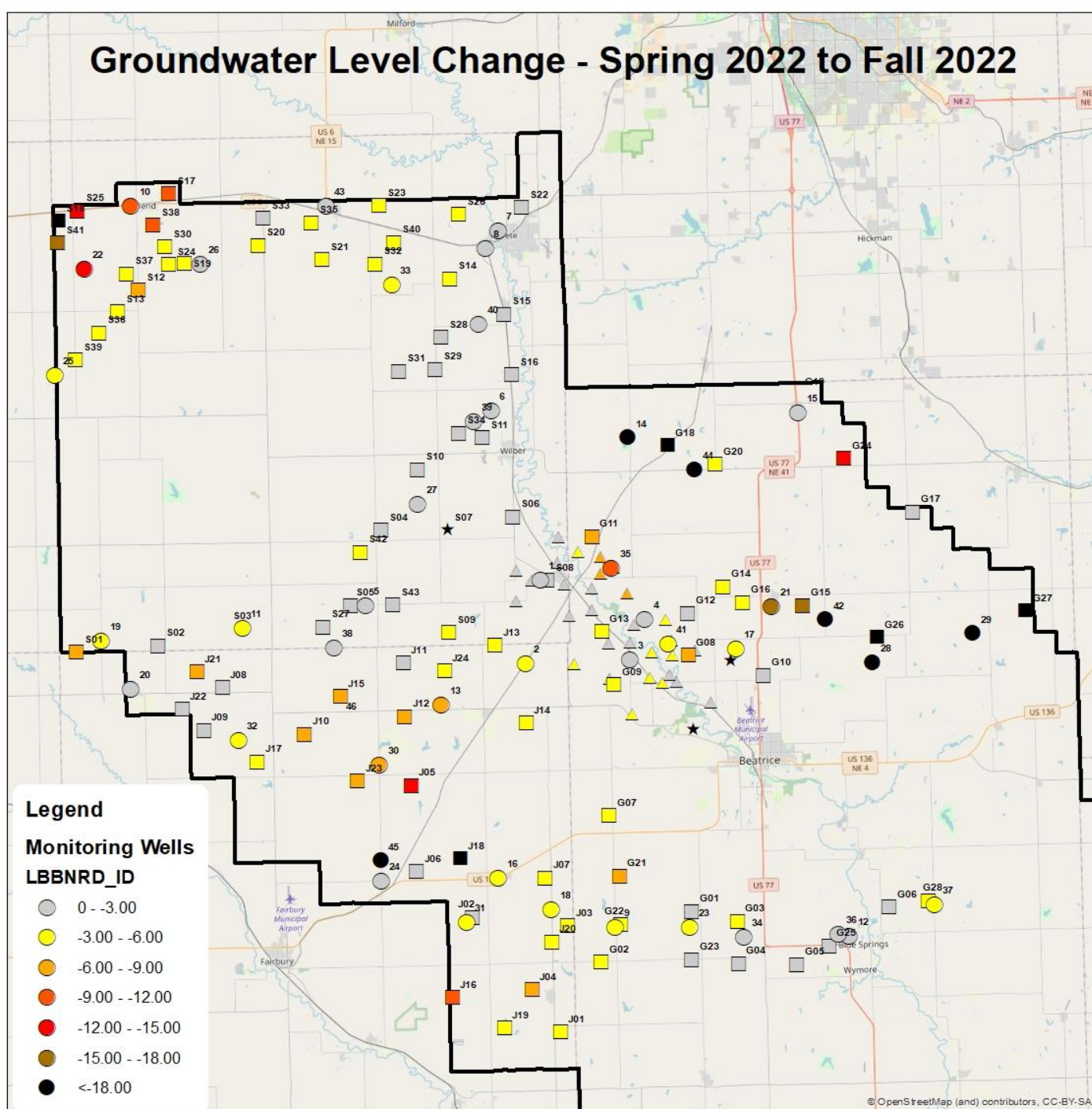
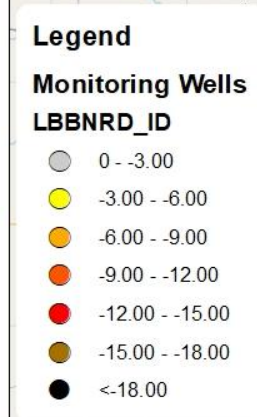
BRC Spring To Fall Change



BRC - "+/-" Spring Baseline



Groundwater Level Change - Spring 2022 to Fall 2022



Groundwater Level Change - Fall 2021 to Fall 2022

Legend

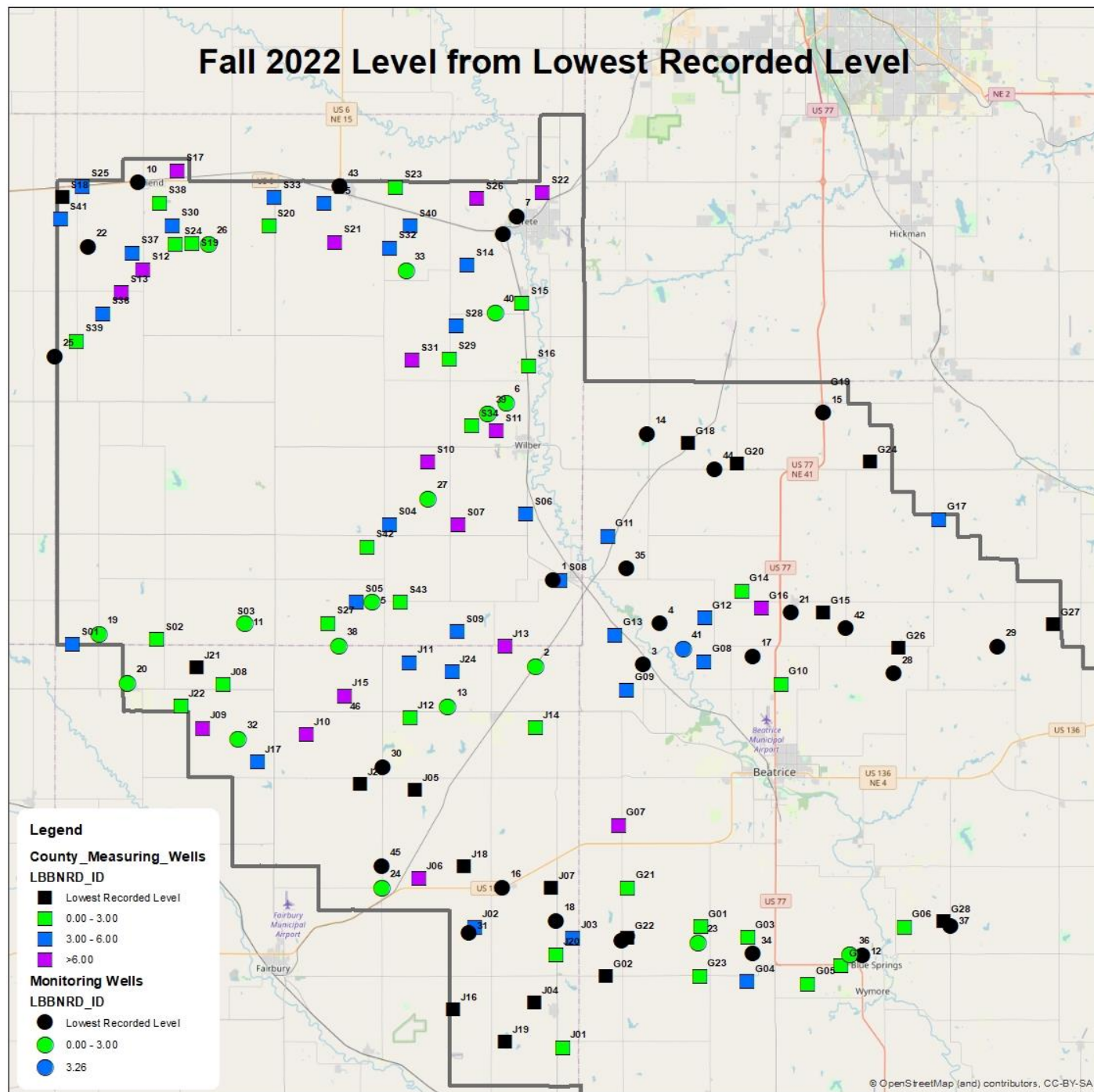
Monitoring Wells

LBBNRD_ID

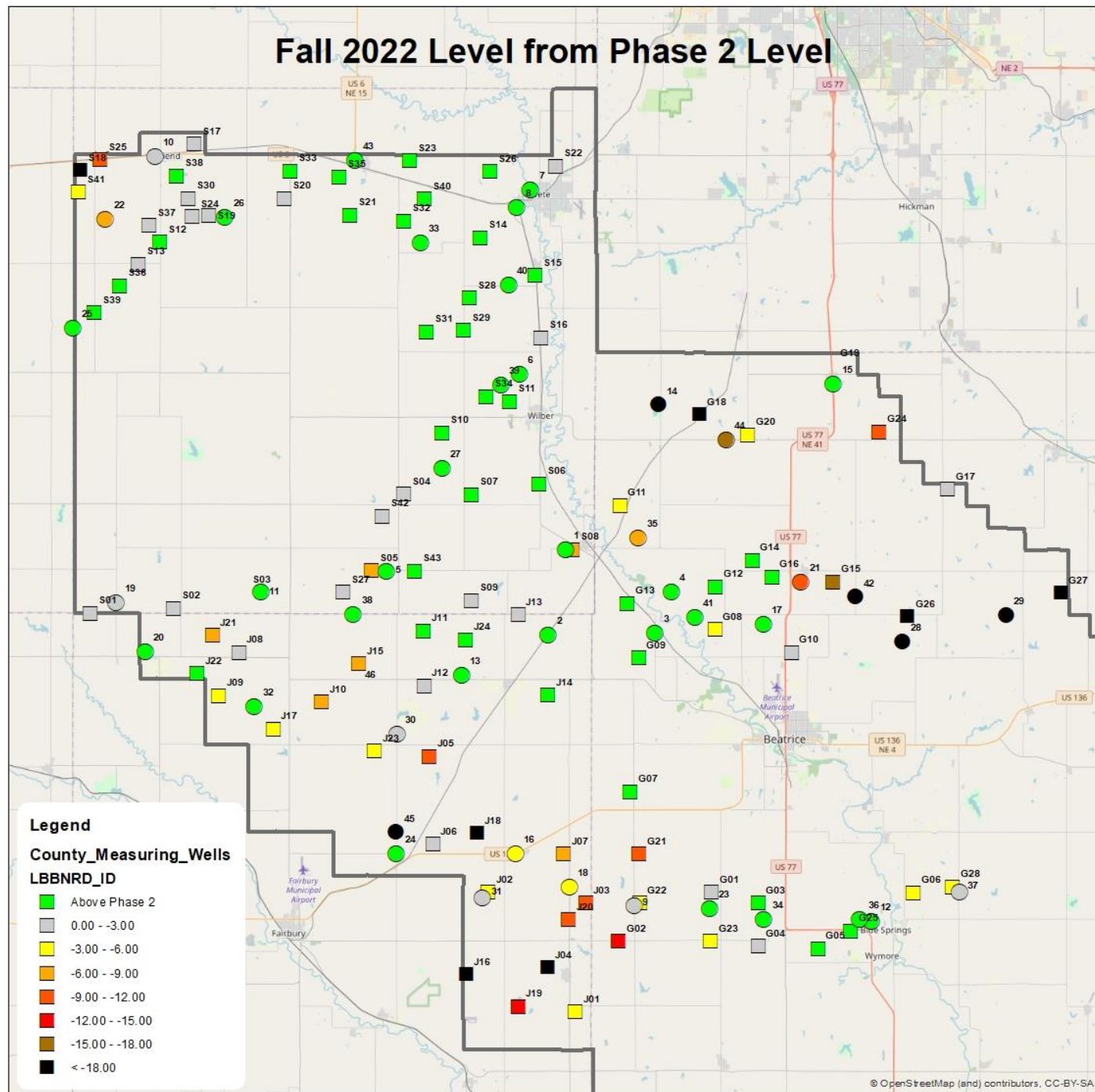
- 0 - -3.00
- 3.00 - -6.00
- 6.00 - -9.00
- 9.00 - -12.00
- 12.00 - -15.00
- 15.00 - -18.00
- <-18.00

© OpenStreetMap (and) contributors, CC-BY-SA

Fall 2022 Level from Lowest Recorded Level



Fall 2022 Level from Phase 2 Level



Spring 2022 Phase 2 Wells

The map displays the locations of wells for the Spring 2022 Phase 2 project in Nebraska. The project area is outlined by a thick black line. Wells are categorized by type and numbered:

- S Series (Green Circles):** S01, S02, S03, S04, S05, S06, S07, S08, S09, S10, S11, S12, S13, S14, S15, S16, S17, S18, S19, S20, S21, S22, S23, S24, S25, S26, S27, S28, S29, S30, S31, S32, S33, S34, S35, S36, S37, S38, S39, S40, S41, S42, S43, S44, S45.
- J Series (Green Circles):** J01, J02, J03, J04, J05, J06, J07, J08, J09, J10, J11, J12, J13, J14, J15, J16, J17, J18, J19, J20, J21, J22, J23, J24.
- G Series (Green Circles):** G01, G02, G03, G04, G05, G06, G07, G08, G09, G10, G11, G12, G13, G14, G15, G16, G17, G18, G19, G20, G21, G22, G23, G24, G25, G26, G27, G28.
- Numbered Green Squares:** 1, 2, 3, 4, 5, 6, 7, 8, 9, 10, 11, 12, 13, 14, 15, 16, 17, 18, 19, 20, 21, 22, 23, 24, 25, 26, 27, 28, 29, 30, 31, 32, 33, 34, 35, 36, 37, 38, 39, 40, 41, 42, 43, 44, 45.

Geographic labels include Saline County, Jefferson County, Fairbury, Beatrice, Wymore, and Springs. A purple airplane icon is located near Beatrice.