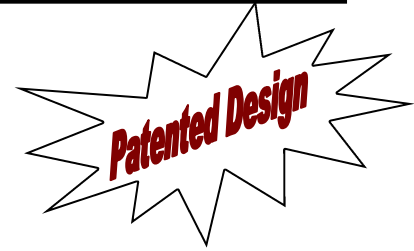


envision ENCLOSURES

"Engineered for Cleanliness"

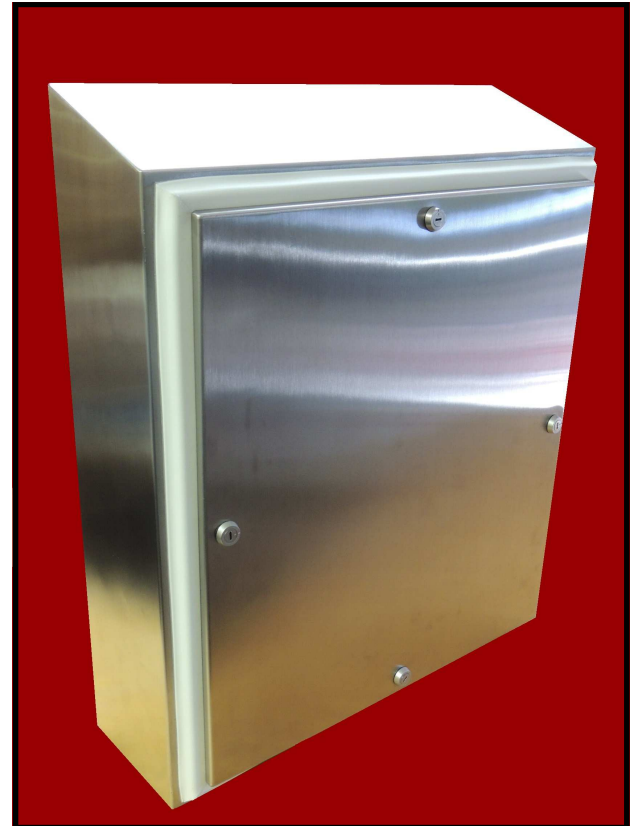


In the pharmaceutical, food, and beverage processing industries cleanliness is paramount. Enclosures used in these facilities to house various types of equipment and control electronics should prohibit the trapping of product or contaminants and enable easy and thorough cleaning.

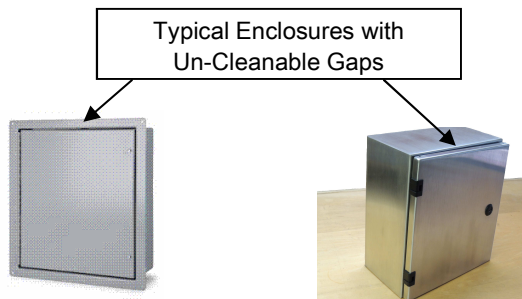
Envision Enclosure's Patented enclosure design addresses both of these requirements -

- Our enclosures are engineered and built with NO Gap between the enclosure's door and body.
- Only finely finished stainless steel and FDA Approved Gasket materials are exposed to the process area.
- Our In-Wall enclosures install in minutes saving customers money and valuable schedule time.
- Our enclosures are easily cleaned yielding additional cost savings for years after installation.

In-Wall and Sloped-Top Enclosures that are:
THE EASIEST TO CLEAN IN THE INDUSTRY!



***NO Gap
Design!***



Typical In-Wall Enclosure

Typical Wall Mount Enclosure



Envision Enclosures' Sloped-Top Enclosure

envision ENCLOSURES, LLC

282 N. Main Street, Doylestown, PA 18901 p(215)230-3323 f(215)489-9733

www.envisionenclosures.com



envision ENCLOSURES

"Engineered for Cleanliness"

Aseptic Sloped-Top Enclosure



Dual Sealing Gasket

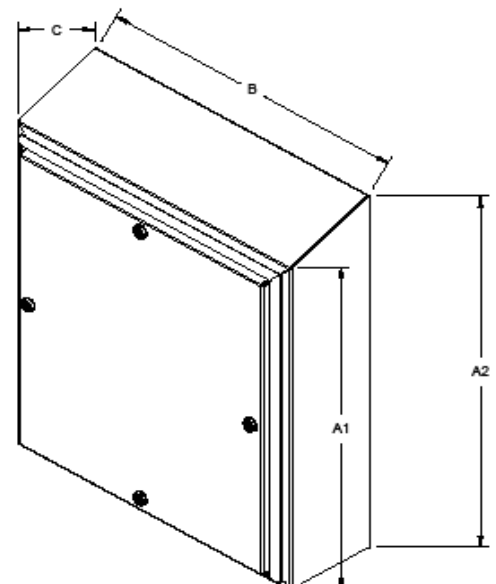
Specifications

- Enclosure door manufactured from 14 gauge 316L stainless steel, # 4 finish (304 SS Available)
- Exposed gasket material is FDA Approved Silicone per CFR 21, 177.2600
- Door latches are 1/2 turn stainless steel compression type
- Main enclosure is 16 gauge 316L Stainless Steel, #4 finish (304 SS Available)
- Removable Door (Hinge-less version available on smaller enclosures)
- Door hinges allow door to pivot freely and prevent gasket damage
- Continuous welded seams
- 20 degree sloped top aids liquid and cleaning fluid runoff
- **Industry Standards: Type 4, Type 4x**

Standard Sizes

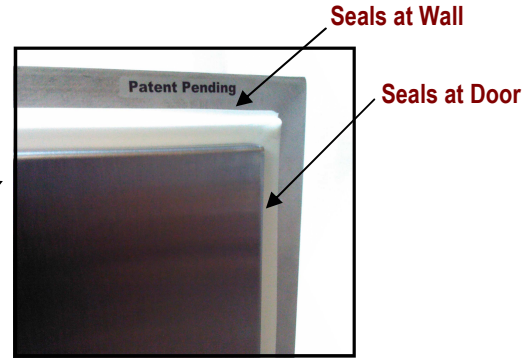
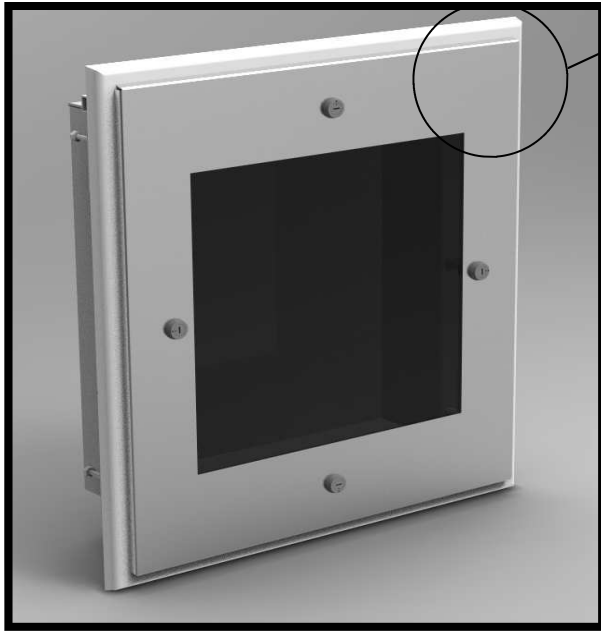
Cutouts and Knockouts are Easily Added

Slope-Top Enclosure	Dimensions (in.)				
	A1	A2	B	C	Subpanel
Part Number	Height Front	Height Back	Width	Depth	Part Number
ST-20168-SS	20	22.92	16	8	SP-2016
ST-24208-SS	24	26.92	20	8	SP-2420
ST-24248-SS	24	26.92	24	8	SP-2424
ST-30248-SS	30	32.92	24	8	SP-3024
ST-201612-SS	20	24.36	16	12	SP-2016
ST-242412-SS	24	28.36	24	12	SP-2424
ST-302412-SS	30	34.36	24	12	SP-3024
ST-363012-SS	36	40.36	30	12	SP-3630
<i>Custom Sizes and Alternate Materials Available</i>					Panels Sold Separately



Patented Design

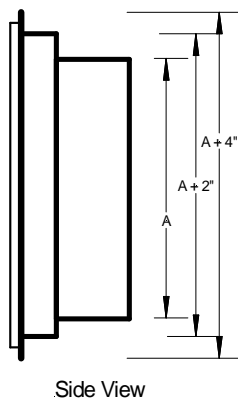
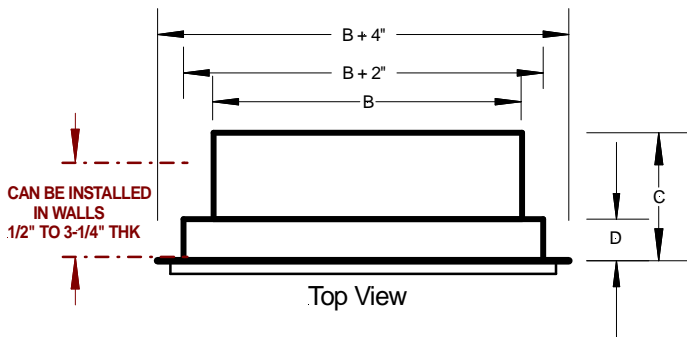
Aseptic In-Wall Enclosure



Patented **Dual** Sealing Gasket Design

Specifications

- Dual Function Sealing Gasket
- Enclosure door manufactured from 14 or 16 gauge 316L stainless steel, # 4 finish (304 SS Available)
- Exposed gasket material is FDA Approved Silicone per CFR 21, 177.2600
- Door latches are 1/2 turn, stainless steel compression type
- Rear enclosure housing is 0.090" 5052 White Powder Coated Aluminum (others available)
- Mounting clamps are operated from inside the enclosure eliminating rear access requirements
- Door is removable via stainless steel lift-off door hinges (Hinge-less version available)
- Translational sliding door hinges allow door to pivot freely and prevent gasket damage
- Continuous welded seams
- Enclosure Access Door Exceeds Type 4x Wash-Down requirements
- Patented Design: **Patent No. US 8752913 B2**



Standard Sizes

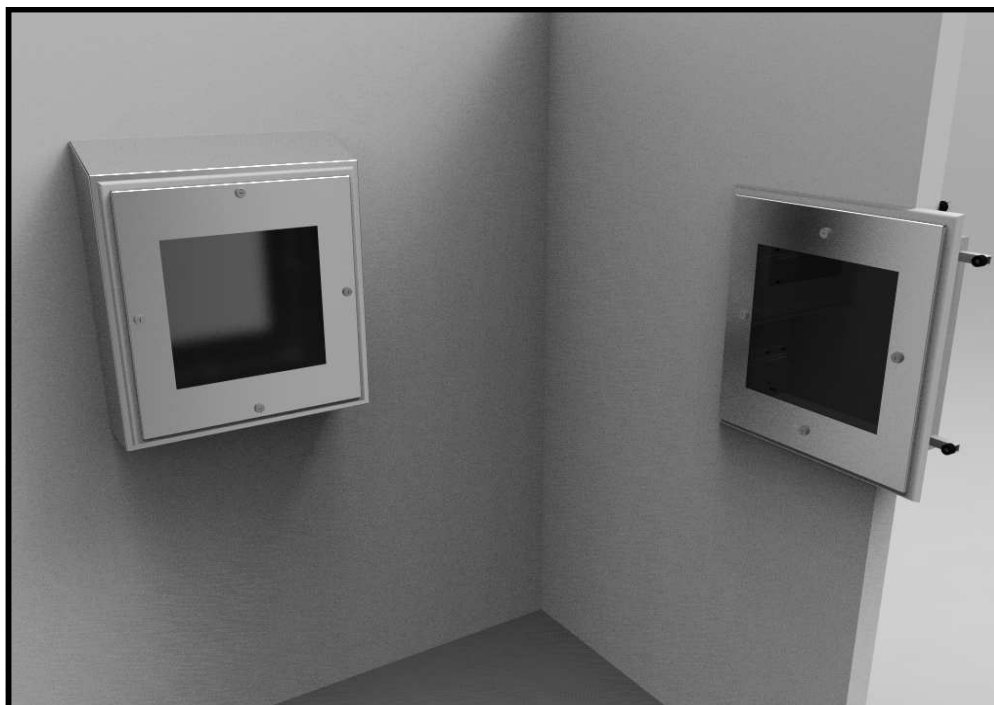
Cutouts and Knockouts are Easily Added

In-Wall Enclosure	Dimensions (in.)						
	A	B	C	D*	Cut-Out (in.)		Subpanel
Part Number	Height	Width	Depth		Height	Width	Part Number
IW-16126-SS	16	12	6	1.6	18.25	14.25	SP-1612
IW-20166-SS	20	16	6	1.6	22.25	18.25	SP-2016
IW-20206-SS	20	20	6	1.6	22.25	22.25	SP-2020
IW-24206-SS	24	20	6	1.6	26.25	22.25	SP-2420
IW-24208-SS	24	20	8	1.6	26.25	22.25	SP-2420
IW-30248-SS	30	24	8	1.6	32.25	26.25	SP-3024
IW-242010-SS	24	20	10	1.6	26.25	22.25	SP-2420
IW-302410-SS	30	24	10	1.6	32.25	26.25	SP-3024
* Can be increased to accommodate thicker wall sections Custom Sizes and Alternate Materials Available							Panels Sold Separately

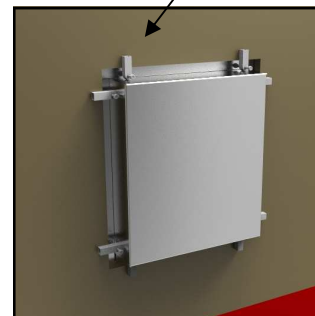
envision ENCLOSURES, LLC

282 N. Main Street, Doylestown, PA 18901 p(215)230-3323 f(215)489-9733

www.envisionenclosures.com

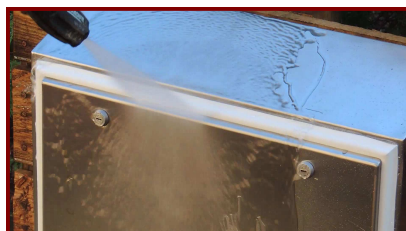


Custom Mounting Clamps Hold
Enclosure into Wall



Rear View of Installed In-Wall
Enclosure

Easily Cleaned Saving Time and Money!
In-Wall enclosures Install into Rectangular Cutouts in Minutes!
Our Enclosure Designs Assure Thorough Cleaning!
Type 4/4x Wash-Down Integrity!

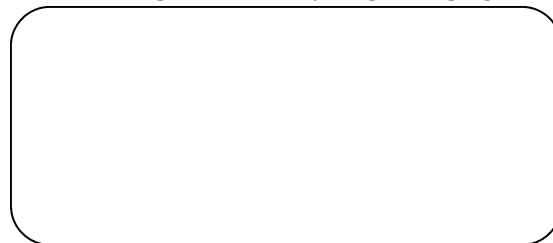


1500 psi Pressure Wash Test



Type 4x Hose-Down Test

REPRESENTATIVE / DISTRIBUTOR



envision ENCLOSURES, LLC

282 N. Main Street, Doylestown, PA 18901 p(215)230-3323 f(215)489-9733

www.envisionenclosures.com

