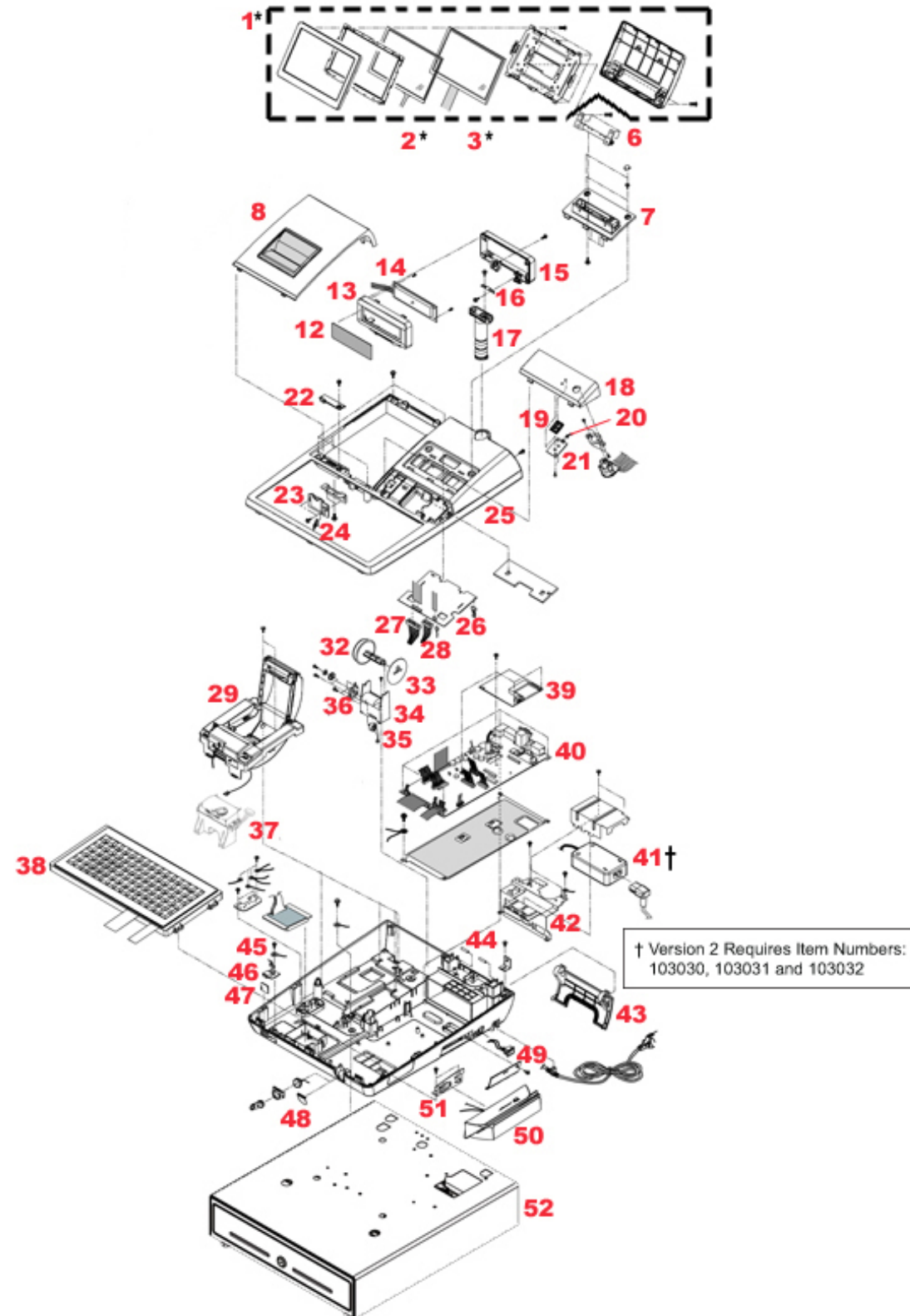


# SPS-530 Series Replacement Parts

\* Display Version 1 – Serial # Up To 1103XXXXXX  
 \* Display Version 2 – Serial # 1103XXXXXX or Later  
 \* Display Version 3 – Serial # 1301XXXXXX or Later



Ref. No.	CRS Item No.	Description
01*	501725	LCD/Touch Assy SPS-5X0 Ver.3
02*	501702	Touch Panel/Tape SPS-5X0 Ver.2
02*	501726	Touch Panel SPS-5X0 Ver. 3
06	501705	Hinge Assy For LCD SPS-5X0
07	501706	Holder, LCD Black SPS-5X0
08	103002	Cover, Printer SPS-530
12	103006	Window For Rear LCD SPS-5X0
13	103005	Cover, Front Turret SPS-5X0
14	501707	Disp LCD 2 Rear SPS-5X0 O/S
15	103003	Cover, Rear Turret SPS-5X0
16	103004	Hinge Assy Turret SPS-5X0
17	103007	Turret Pole SPS-5X0
18	103009	Cover, Mode SPS-530
19	103012	LED Cover SPS-5X0
20	103013	LED Harness SPS-5X0
21	501708	Board, LED SPS-5X0
22	103008	Cover, SD Slot SPS-5X0
23	501709	Board, SD For SPS-5X0
24	103015	Harness For SD SPS-5X0
25	103014	Case, Upper SPS-5X0
26	501710	Board, LCD SPS-5X0
27	103011	Harness LCD 30 Pin SPS-5X0
28	103016	Harness LCD 20 Pin SPS-5X0
29	501711	Printer LTPf347e SPS-530
32	101308	Spool Winding ER-5200,15,40

Ref. No.	CRS Item No.	Description
33	101309	Guide Winding ER-5200,15,40
34	101307	Spool Holder ER-5200,15,40
35	501728	Motor, Spool Assy SPS-5X0/7000
36	103024	Bracket, Spool SPS-5X0
37	434004	Auto Cutter ACUF324g SPS-530
38	500500	Keyboard Assy SPS-5X0 Raised
38	500501	Keyboard Assy SPS-5X0 Flat
39	501714	Logic Board SPS-5X0
40	501715	Board, I/O SPS-5X0
41†	501718	Power Supply SPS-5X0 Ver. 1
41	501727	Power Supply SPS-5X0 Ver. 2
41†	103030	Bracket, Power Supply SPS-5x0
41†	103032	Pad, Power Supply SPS-5x0
42†	103031	Brkt, Interface Power SPS-5x0
42	103018	Interface Bracket SPS-5X0
43	103020	Door, Interface SPS-5X0
44	103019	Shaft, Door SPS-5X0
45	501716	Harness, USB SPS-5X0
46	501717	Board, USB SPS-5X0
47	103017	Cover, USB Port SPS-5X0
48	103023	Cover, Dummy SPS-5X0
49	103021	Door, Option SPS-5X0
50	520051	MCR Trk 1&2 Black SPS-500
51	103022	Bracket, MCR SPS-5X0
52	160157	Drawer Model 57 ECR Black 24V