

Ciclo de 3M>>>

sentido horário
MENOR HARMÔNICO

sem armadura de clave

Dm7M(9)(11)(b13)

F#m7M(9)(11)(b13)



Bbm7M(9)(11)(b13)

Fm7M(9)(11)(b13)



Am7M(9)(11)(b13)

C#m7M(9)(11)(b13)



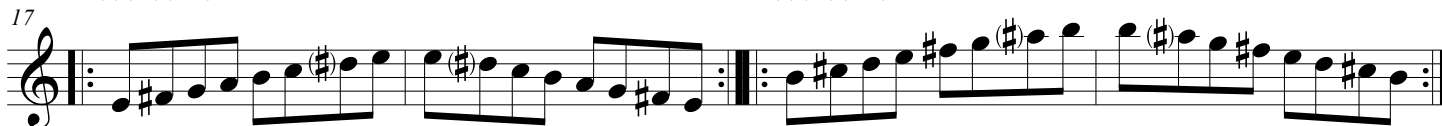
Abm7M(9)(11)(b13)

Cm7M(9)(11)(b13)



Em7M(9)(11)(b13)

Bm7M(9)(11)(b13)



Ebm7M(9)(11)(b13)

Gm7M(9)(11)(b13)



<<<<Ciclo de 6m

sentido anti-horário