

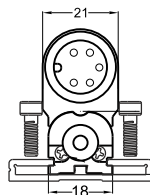
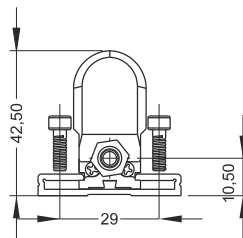
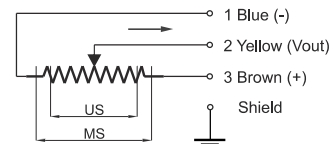
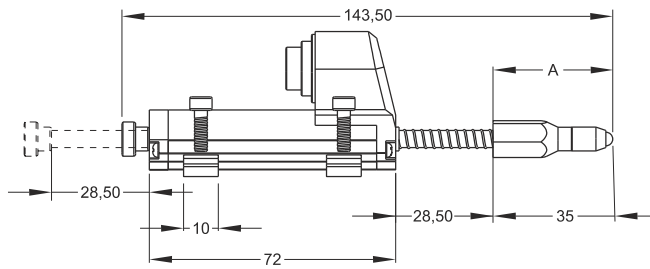
Linear potentiometer Spring return, slim body series

Measuring range 10 - 100 mm
Long mechanical life
Excellent repetability <0.01 mm
Infinite resolution



Technical specifications

| | |
|-----------------------------|------------------------------------------|
| Measurement stroke | 10 ... 100 mm |
| Linearity | ± %0,05 |
| Repeatability | < 0.01 mm |
| Resolution | Infinite |
| Resistance | 5 KOhm or 10 KOhm (10-25mm for 2 kOhm) |
| Resistance tolerance | ± %20 |
| Load resistance | 100 KOhm min. |
| Recommended cursor current | <1 µA |
| Permissible applied voltage | 28 VDC max. |
| Electrical connections | 5 pin connector / cable output |
| Displacement speed | < 5 m/s |
| Mechanical life | 100 million cycles |
| Case dimensions | Ø18 mm |
| Case material | Anodized aluminium |
| Rod material | Stainless Steel |
| Rod diameter | Ø5 mm |
| Mechanical fixing | Variable brackets |
| IP degree | IP 65 |
| Operating temperature | -20°C ... +80°C |
| Storage temperature | -30°C ... +90°C |



| | | | | | | A | |
|------------------------|-------|-------|-------|-------|-------|-----------|----|
| SLPKS (mm) | 10 | 25 | 50 | 75 | 100 | SLPKS 10 | 35 |
| US (Usefull Stroke) | 10 | 25 | 50 | 75 | 100 | SLPKS 25 | 35 |
| MS (Mechanical Stroke) | 13 | 28 | 52 | 78 | 103 | SLPKS 50 | 42 |
| L (Total Length) | 113,5 | 143,5 | 203,5 | 253,5 | 303,5 | SLPKS 75 | 42 |
| | | | | | | SLPKS 100 | 42 |

| Model | Measurement stroke (mm) | Linearity (%) | Resistance (KOhm) | Connector / Cable |
|-----------------|-------------------------|------------------------|-------------------------------------------------------|--------------------------------------|
| (example) SLPKS | 100 | D | 5K | C5 |
| SLPKS | 10 ... 100mm | D : ± %0,05 (standart) | 2K : 2 KOhm (10-25mm) 5K : 5 KOhm 10K : 10 KOhm | C5 : 5 pin connector 1M: standard |