

# Ciclo cromático>>>

sentido horário  
MENOR HARMÔNICO

com armadura de clave

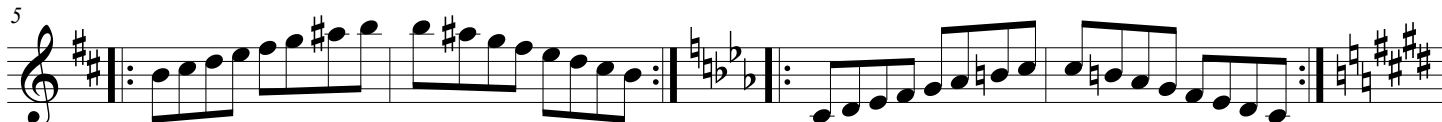
Am7M(9)(11)(b13)

Bbm7M(9)(11)(b13)



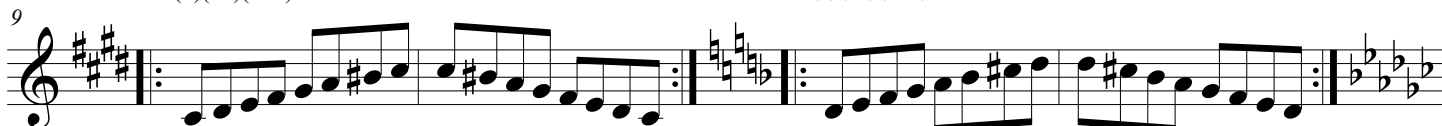
Bm7M(9)(11)(b13)

Cm7M(9)(11)(b13)



C#m7M(9)(11)(b13)

Dm7M(9)(11)(b13)



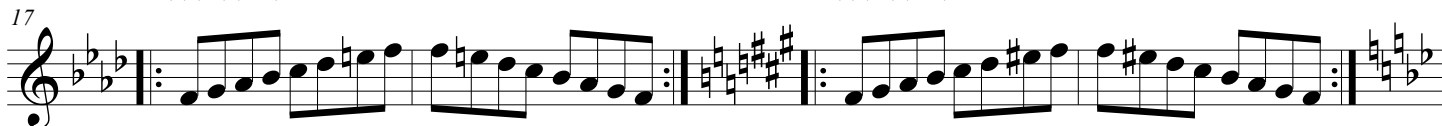
Ebm7M(9)(11)(b13)

Em7M(9)(11)(b13)



Fm7M(9)(11)(b13)

F#m7M(9)(11)(b13)



Gm7M(9)(11)(b13)

Abm7M(9)(11)(b13)



# <<<<Ciclo de 7M

sentido anti-horário