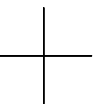
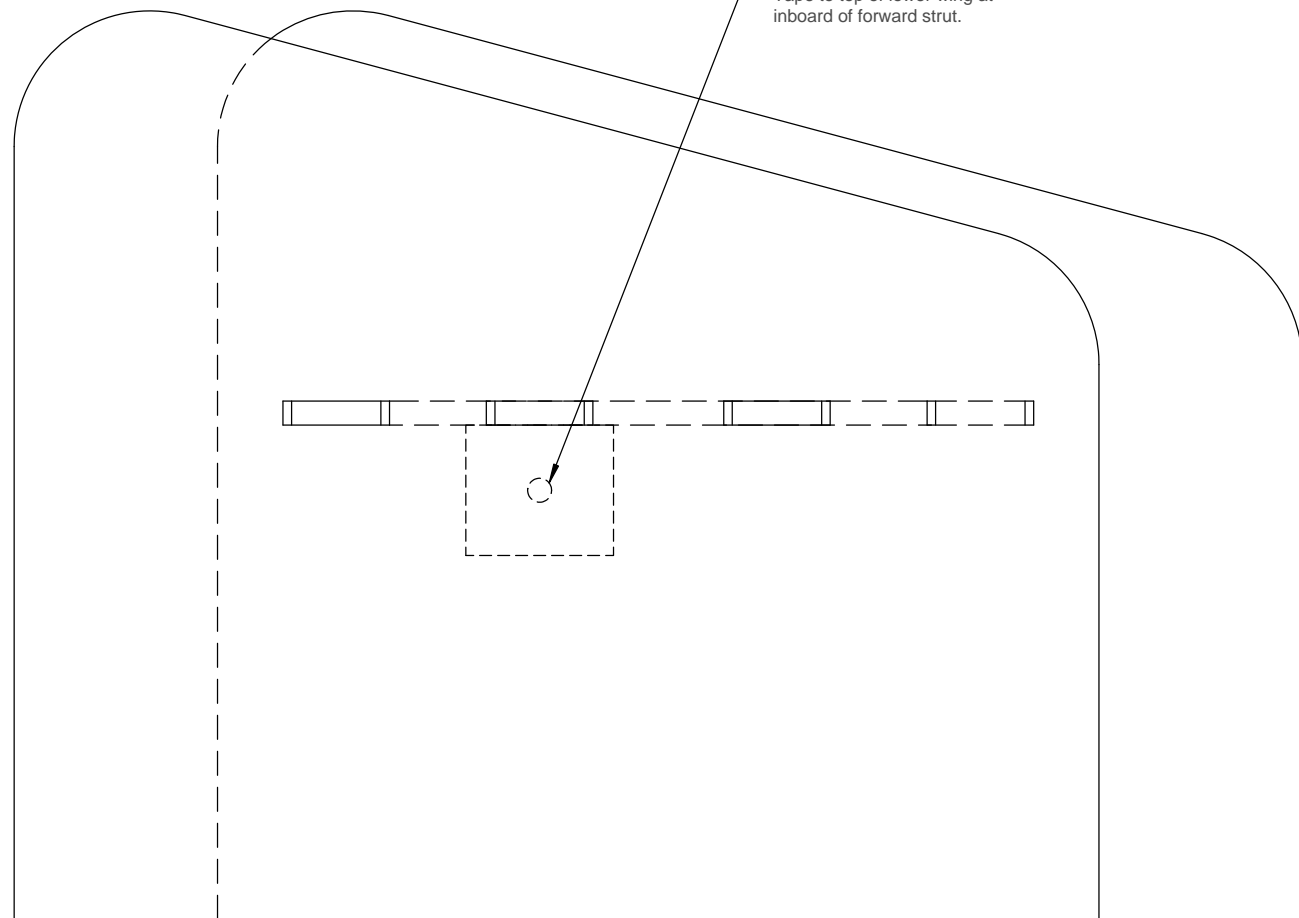
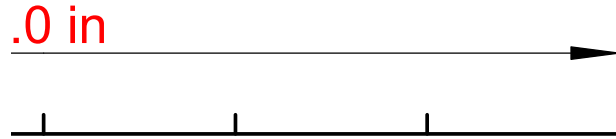
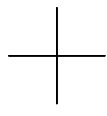
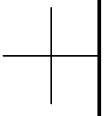


1/4 oz. Outboard wing tip weight suggested for initial test flights.
Tape to top of lower wing at inboard of forward strut.

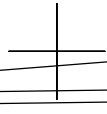
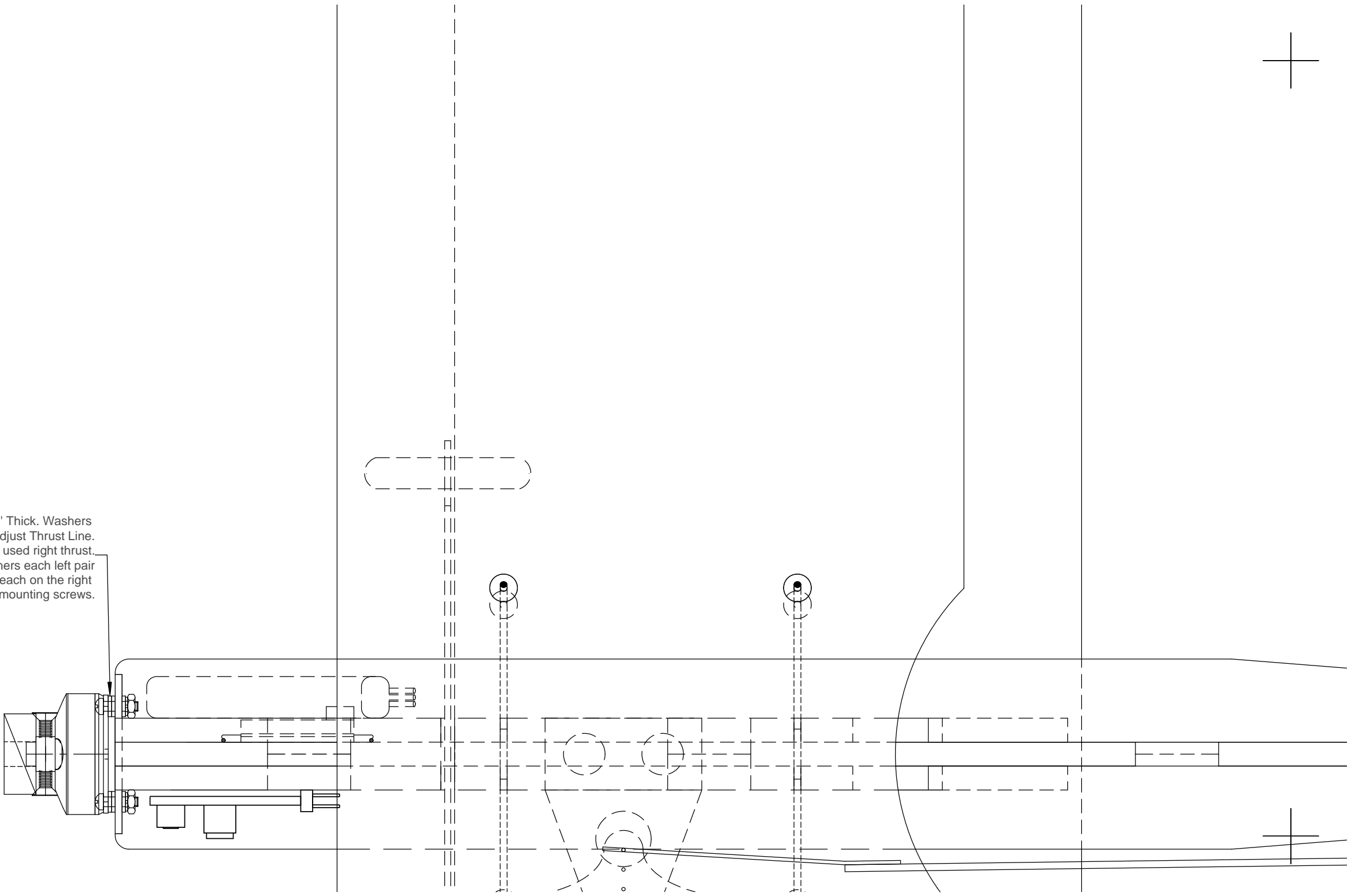


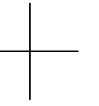
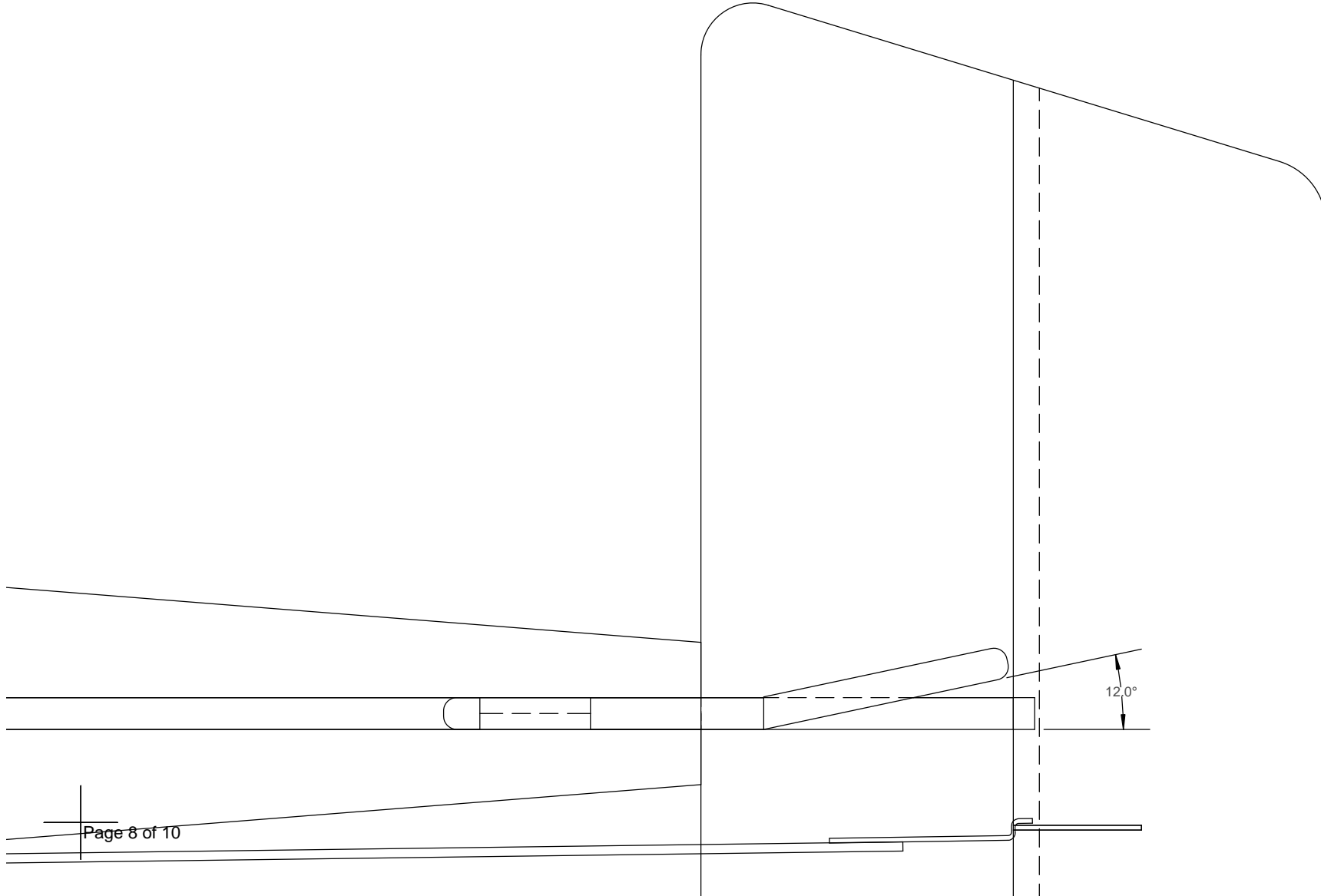
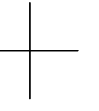
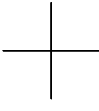


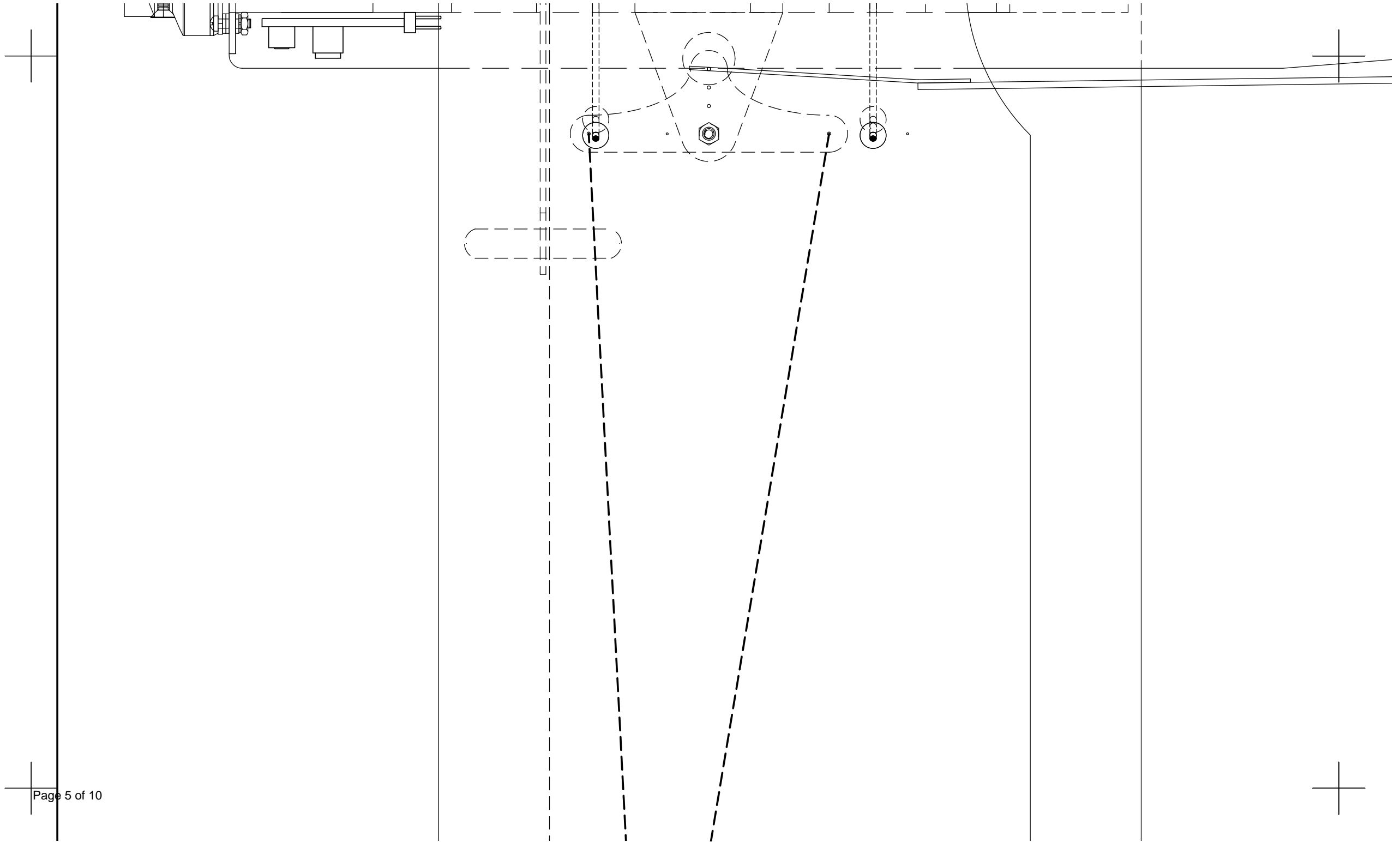
Wing Span	20 in
Length	19.5 in
Weight	5.6 oz.
Wing Area	222 sq.in
Wing Loading	3.7 oz/sq.ft
Motor	Brushless Outrunner BP A2204-19
Propeller	APC 8 X 3.5
Motor Controller	Castle Creations Thunderbird 9
Control Line Motor	Timer E-flite EFLA172
Battery	Li-Poly 2S 320mah 30C

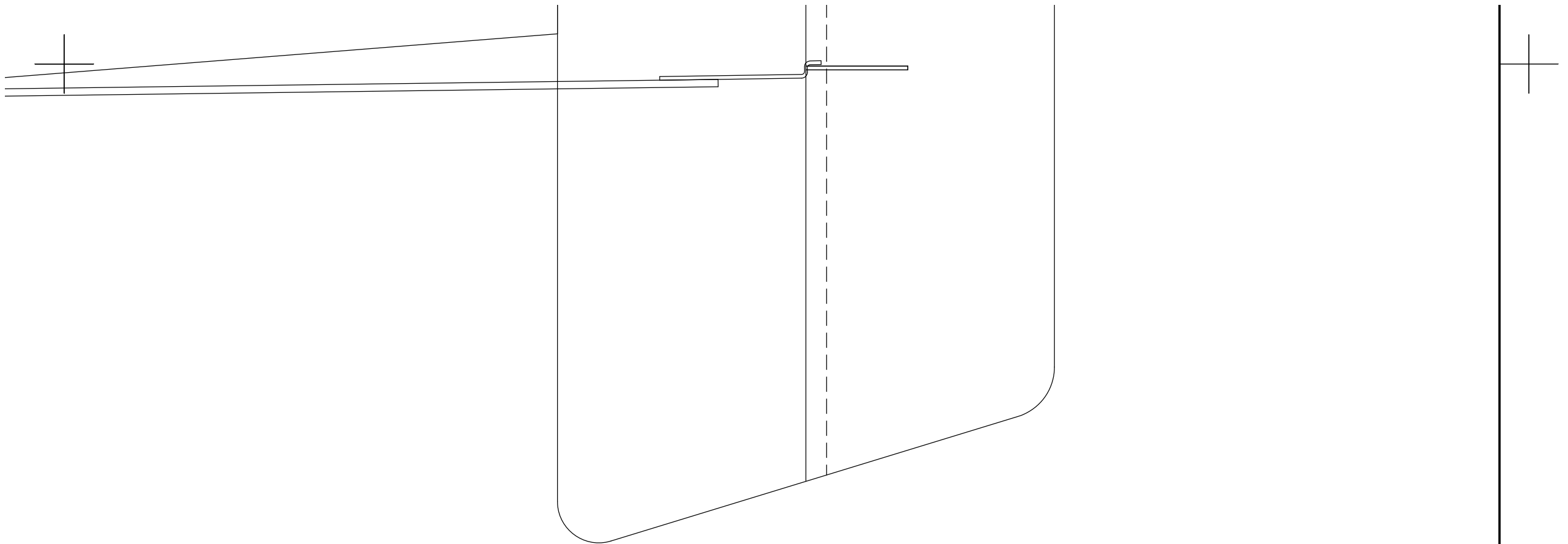


Use 1/32" Thick Washers
to Adjust Thrust Line.
Original used right thrust.
Three washers each left pair
and one each on the right
pair of mounting screws.





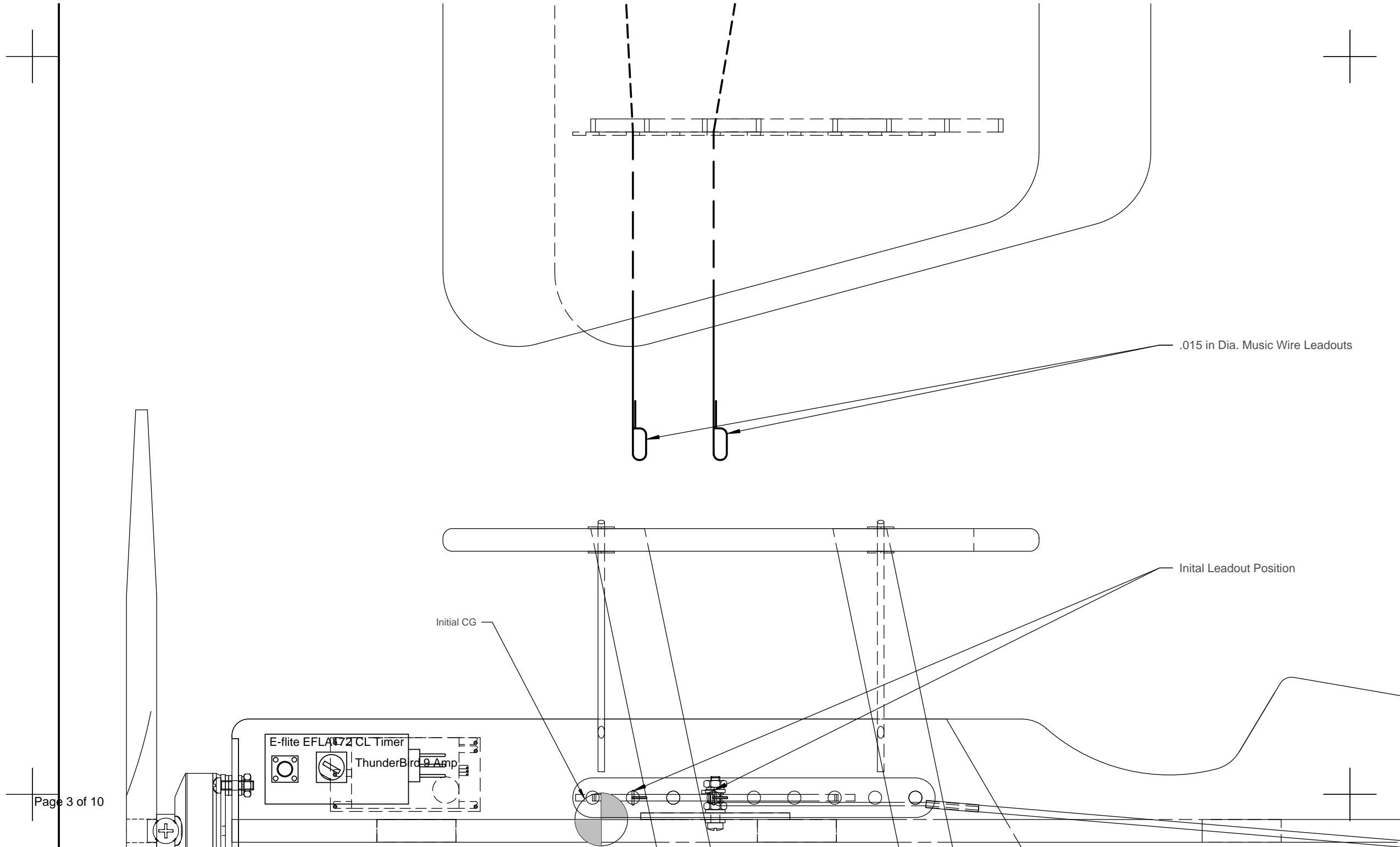




Original flown on 25 ft Spectra fiber lines
sized and prepared in accordance with the
2011 -2011 AMA Competition Regulations
Section 5.3.5.1 Spectra Lines.

Available on the AMA web site -

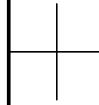
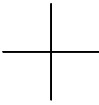
<http://www.modelaircraft.org/files/2011-2012CLGeneral4.pdf>



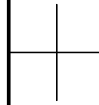
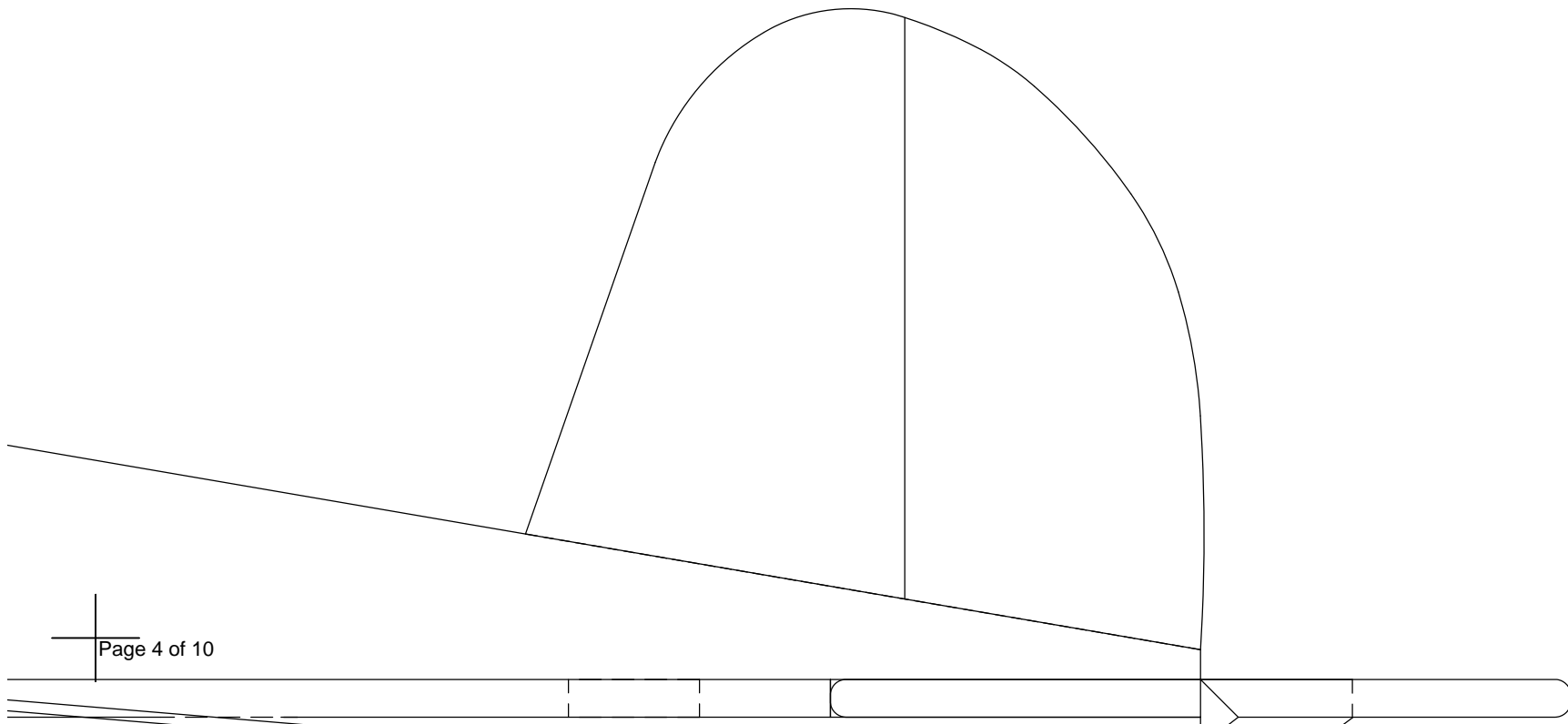
Section 5.3.5.1 Spectra Lines.

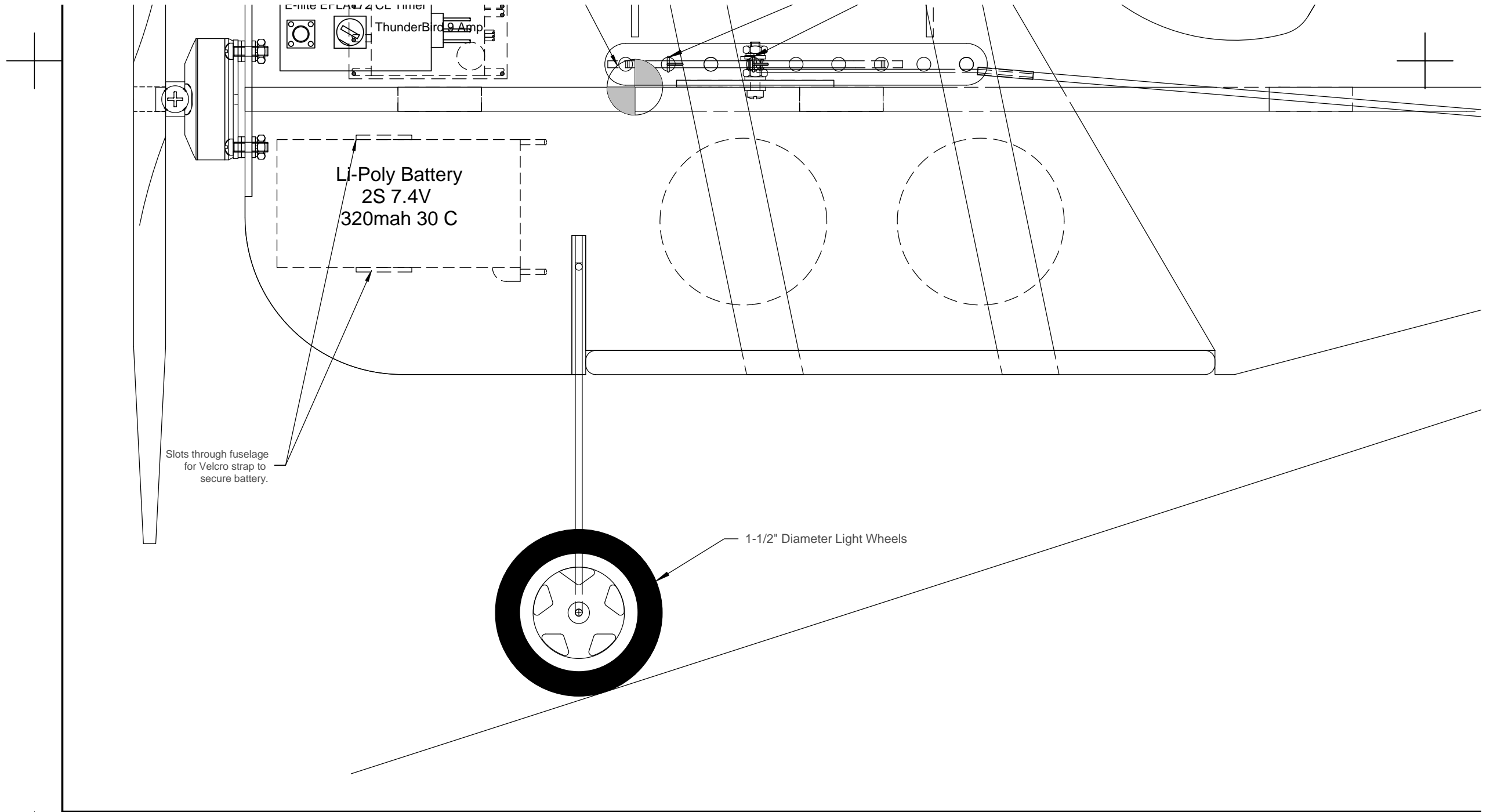
Available on the AMA web site -

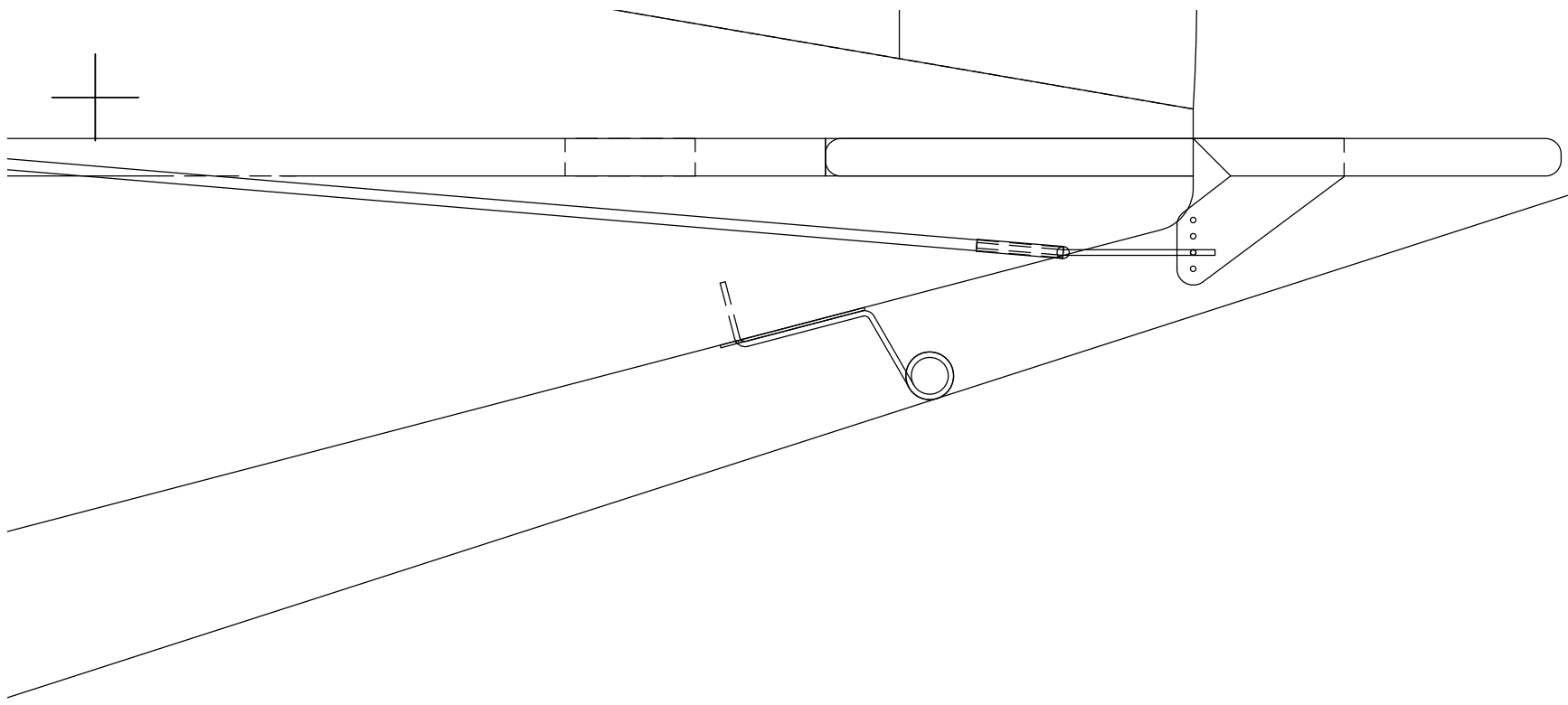
<http://www.modelaircraft.org/files/2011-2012CLGeneral4.pdf>



» Leadouts







MINI-E-BIPE IIa C/L

Designed and Drawn By Carl Hock Oct 2011
Inspired by Lou Roberts 1/2A C/L "Mini-Bipe"
originally published in Flying Models Magazine.