

OM's Harmonic Indicator HSI Cluster Dates 2016

The red panels indicate the level of planetary intensity for the year/month and day.

High cluster dates often indicate a CIT- Change in Trend +/- 1 day.

This is not a directional indicator rather a planetary timing indicator.

** OM's Harmonic Indicator is a proprietary model which uses natal charts with Current Transits and Midpoints.

DISCLAIMER

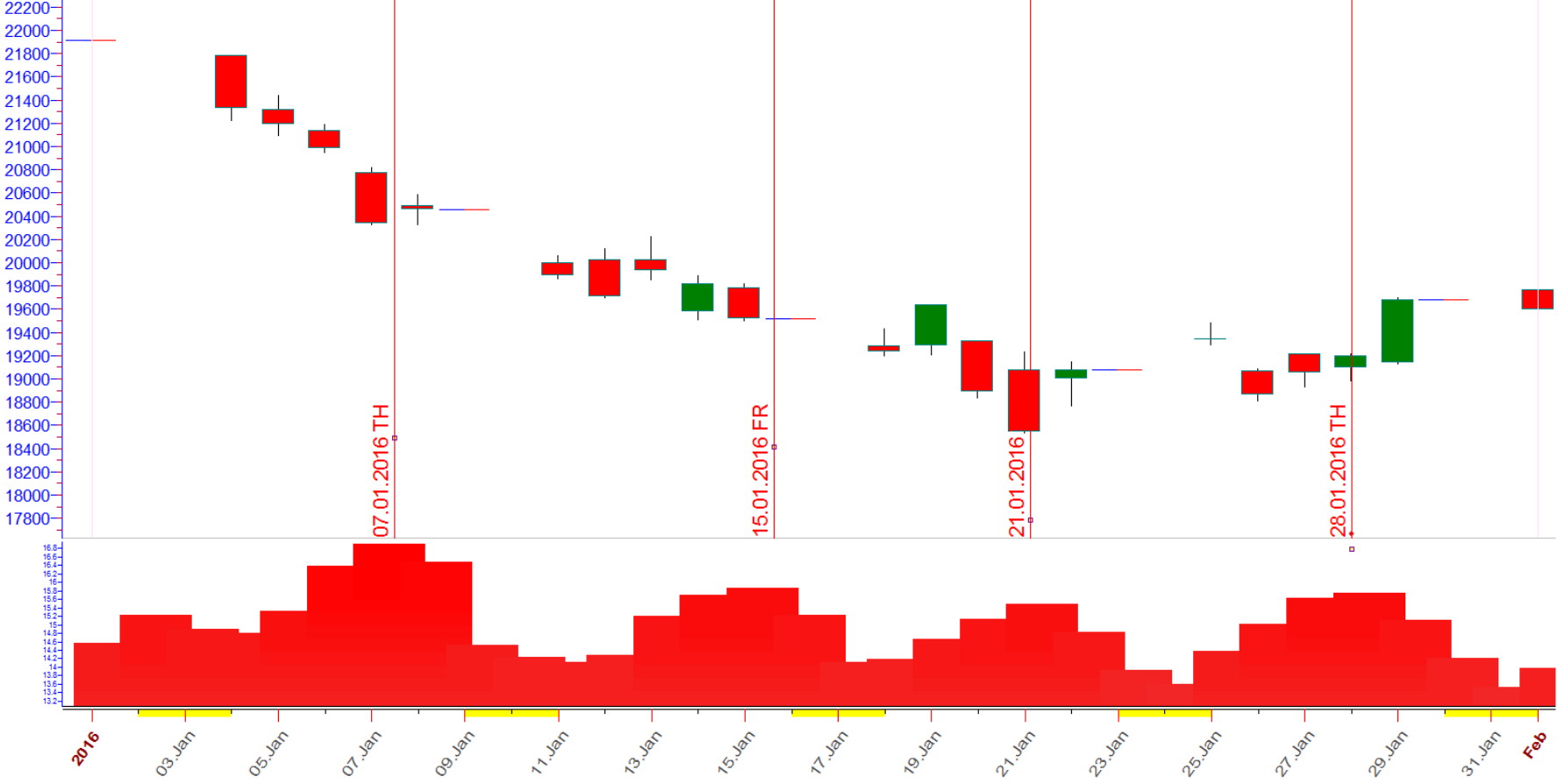
- All charts and analysis are purely for educational purposes and do not intend to provide trading advice or recommendations.

Past performance is no guarantee of future performances.

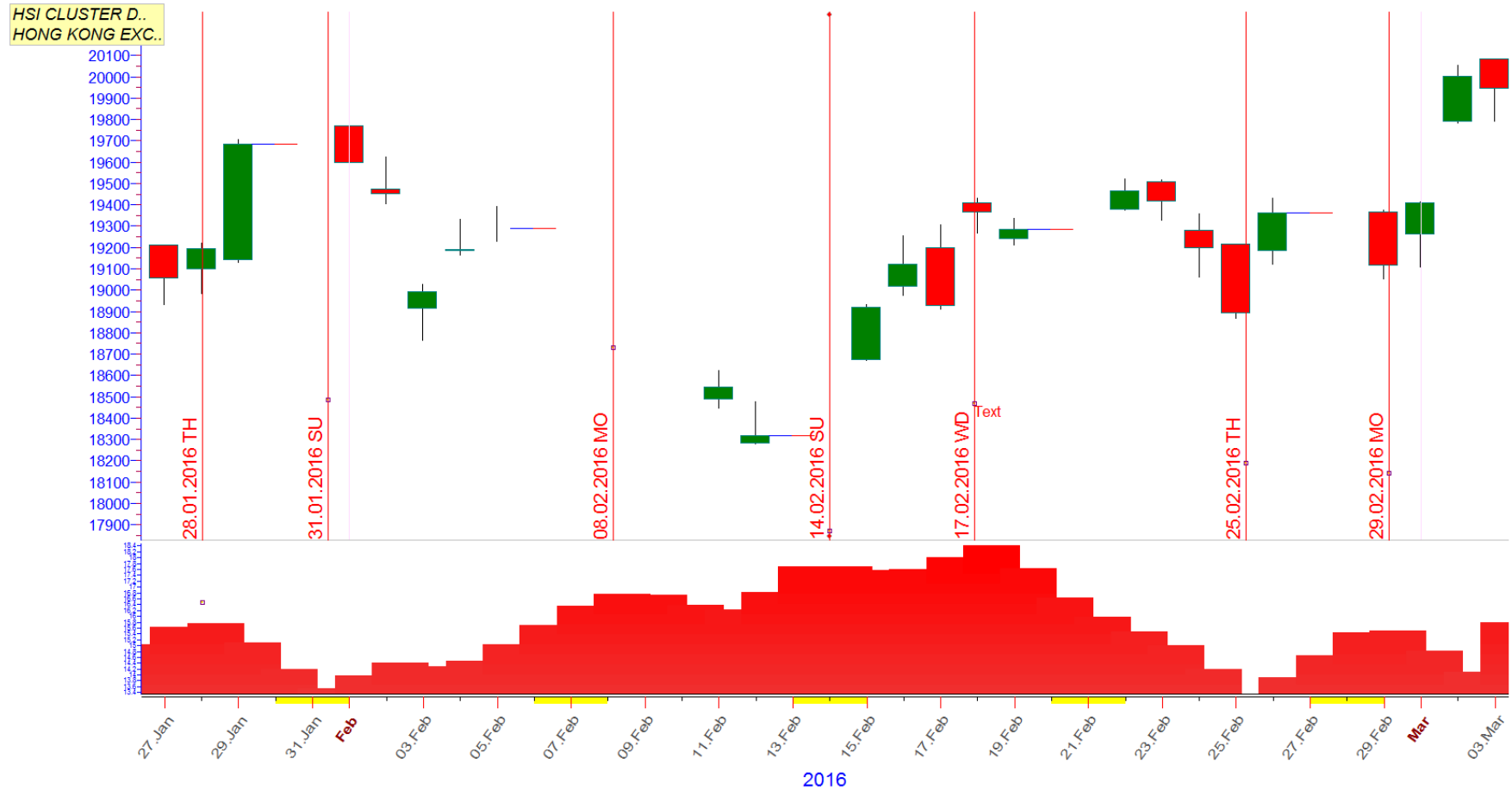
- I am not a licensed financial advisor and will not accept liability for any loss or damage, including without limitation to, any loss of profit, which may arise directly or indirectly from use of or reliance on the content of this transit watch.
- All slides are Copyright and not to be shared or copied in any format.

January 2016

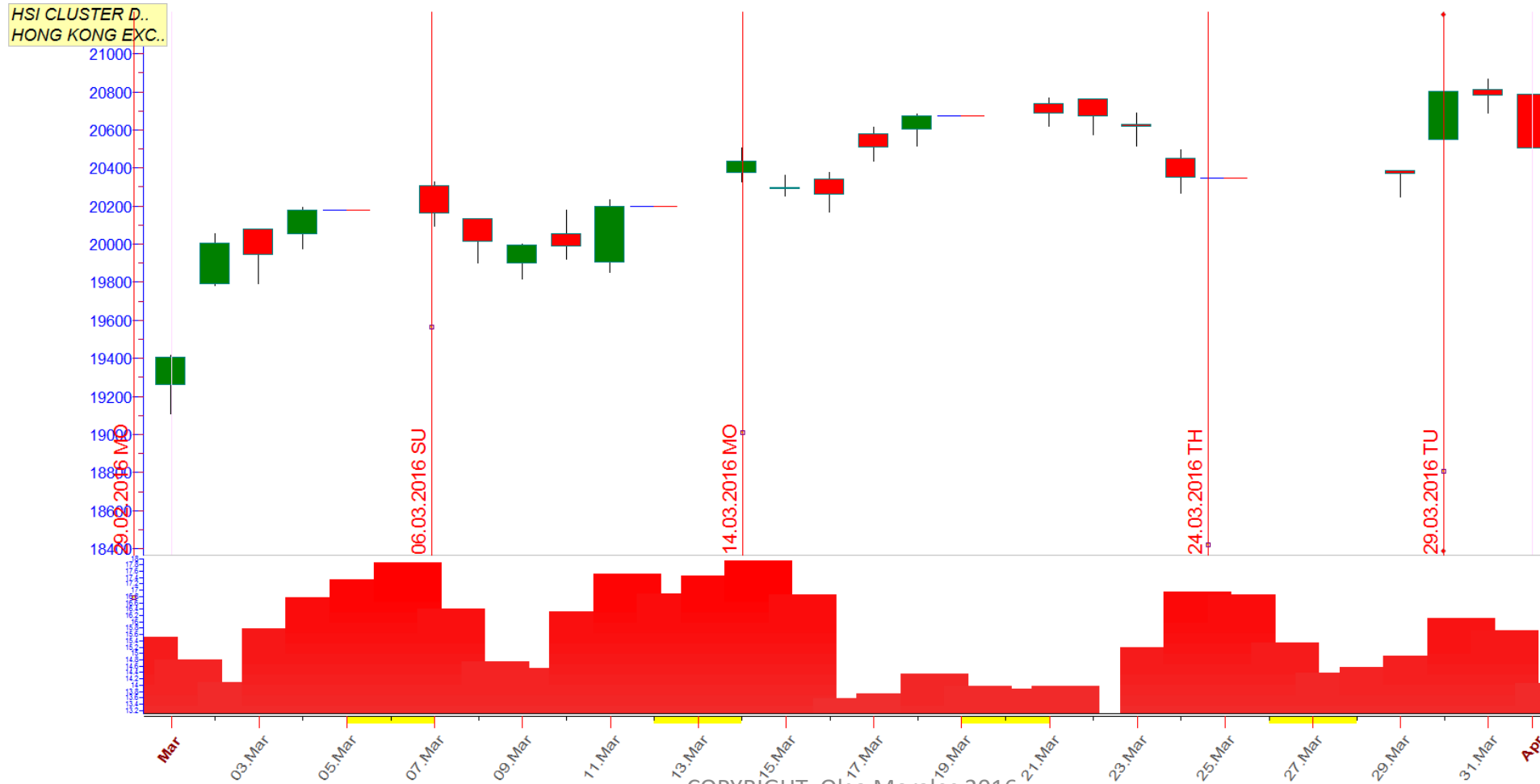
HSI CLUSTER D..
HONG KONG EXC..



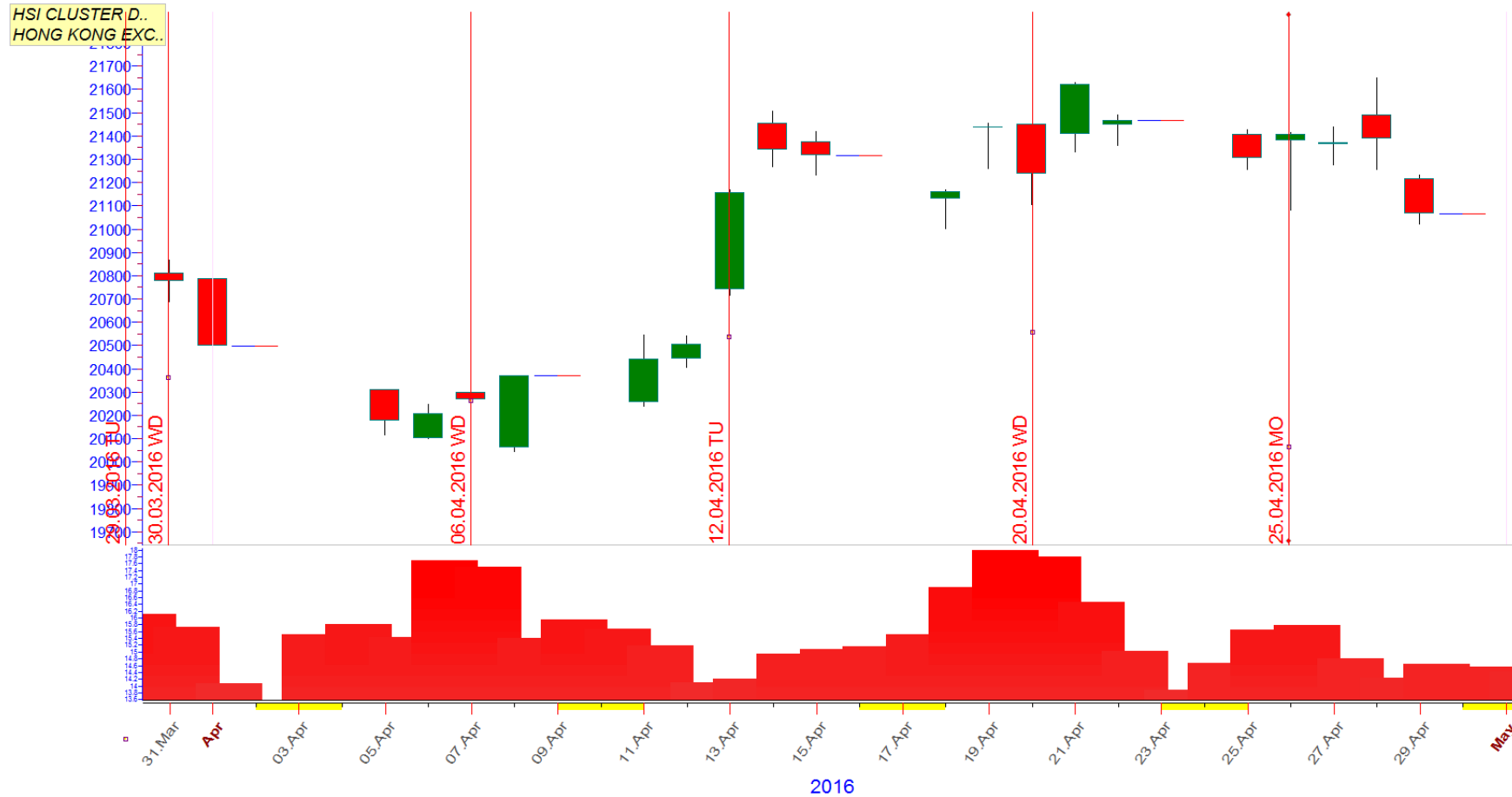
February 2016



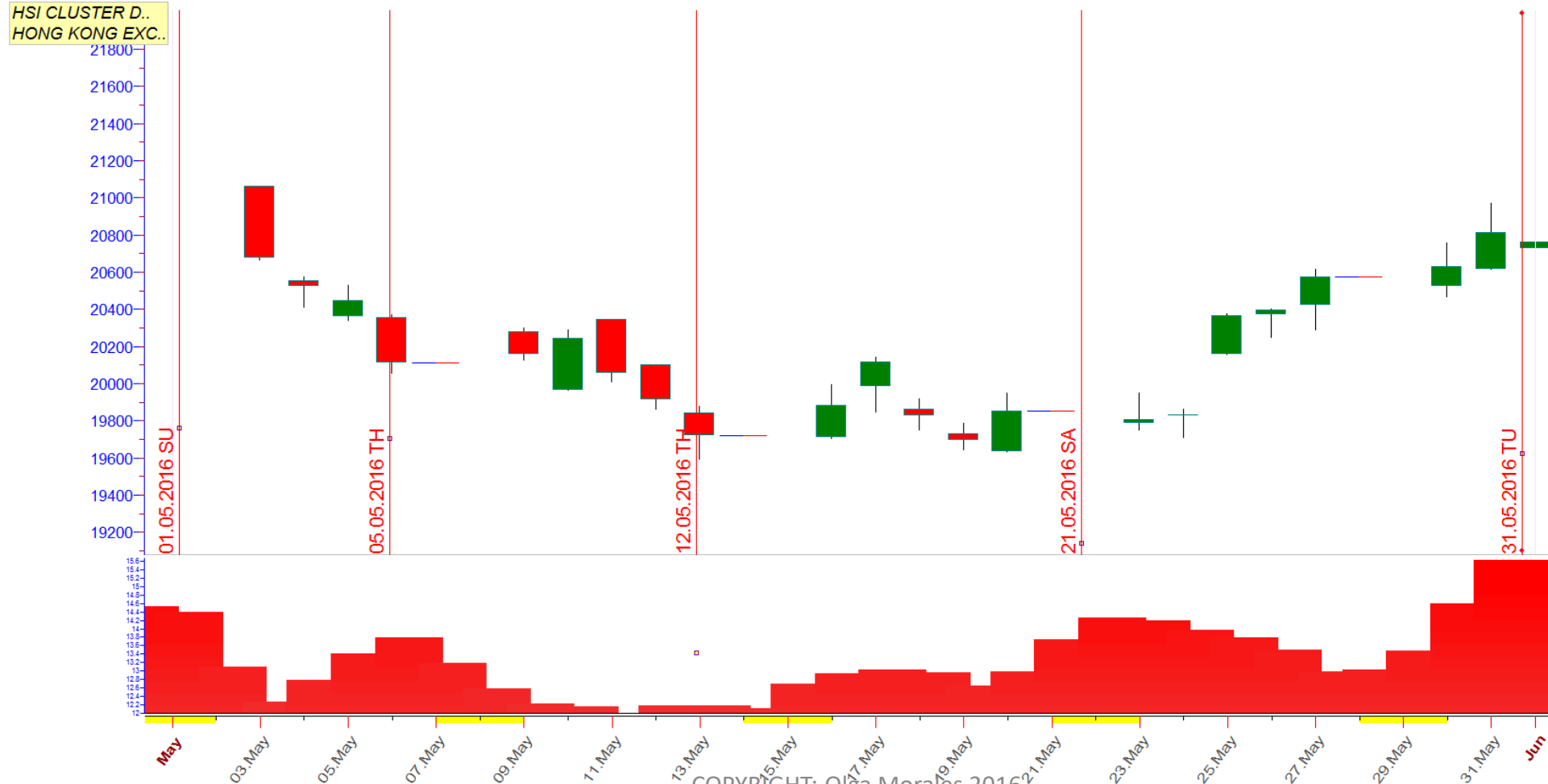
March 2016



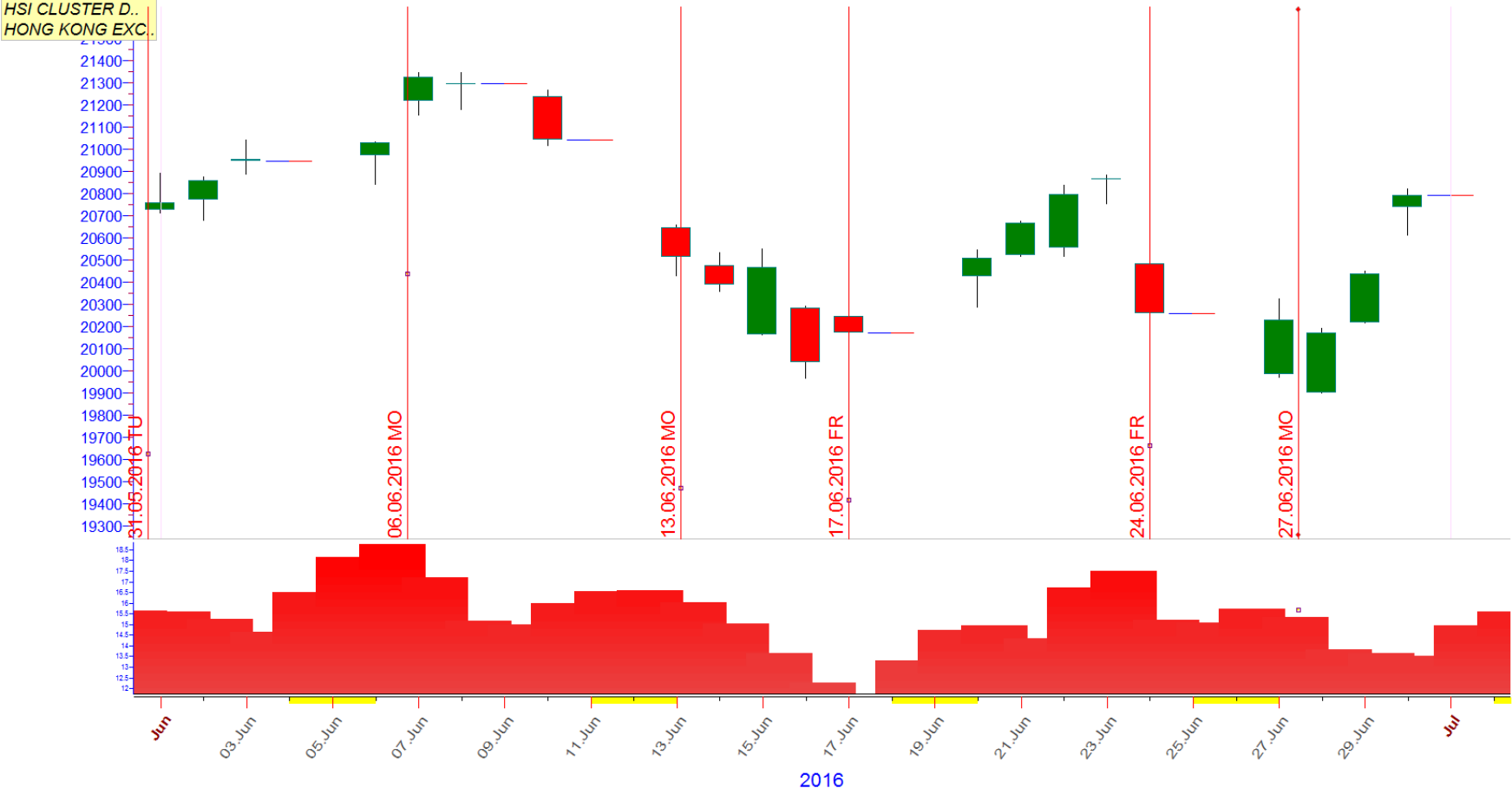
April 2016



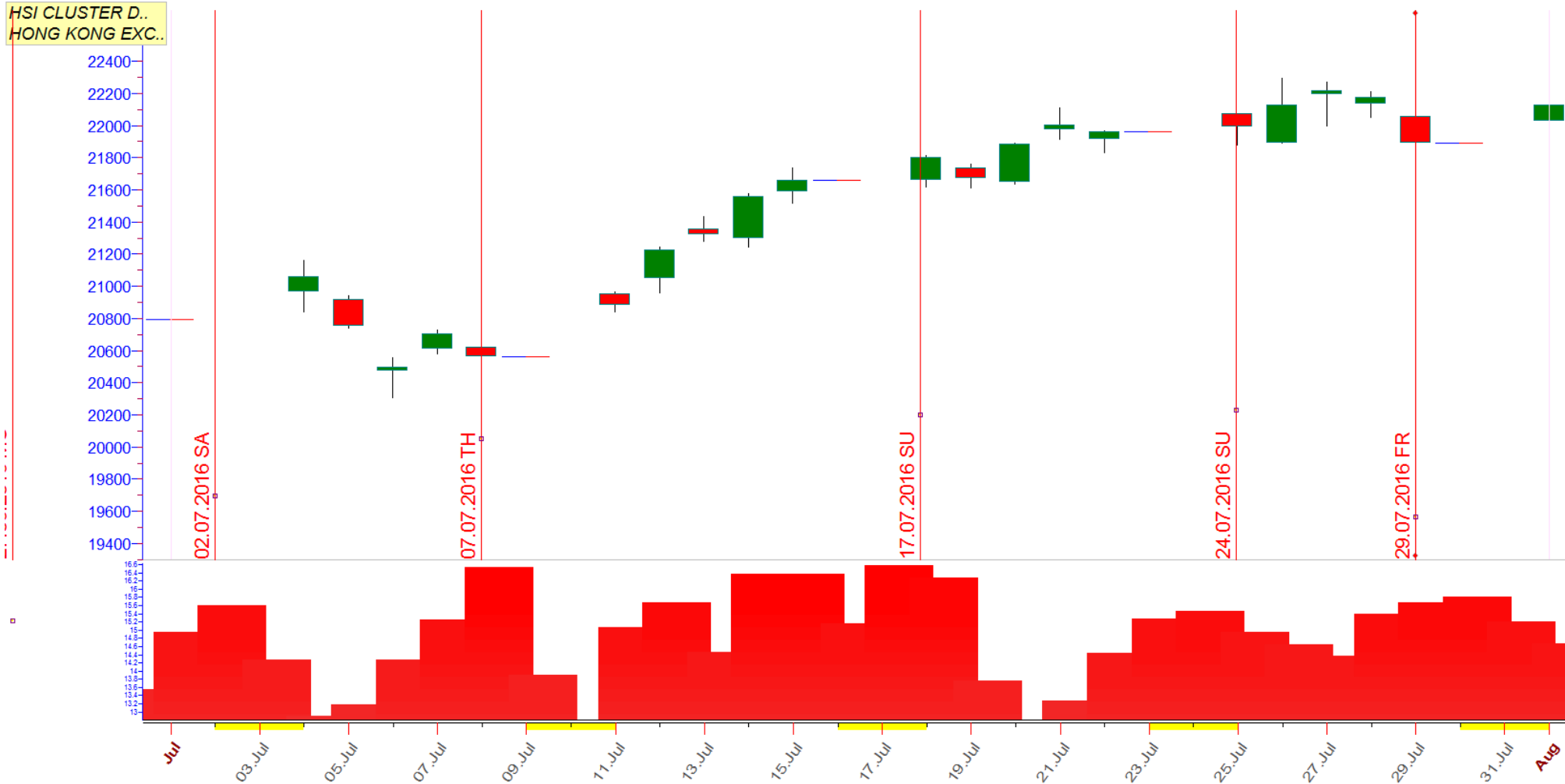
May 2016



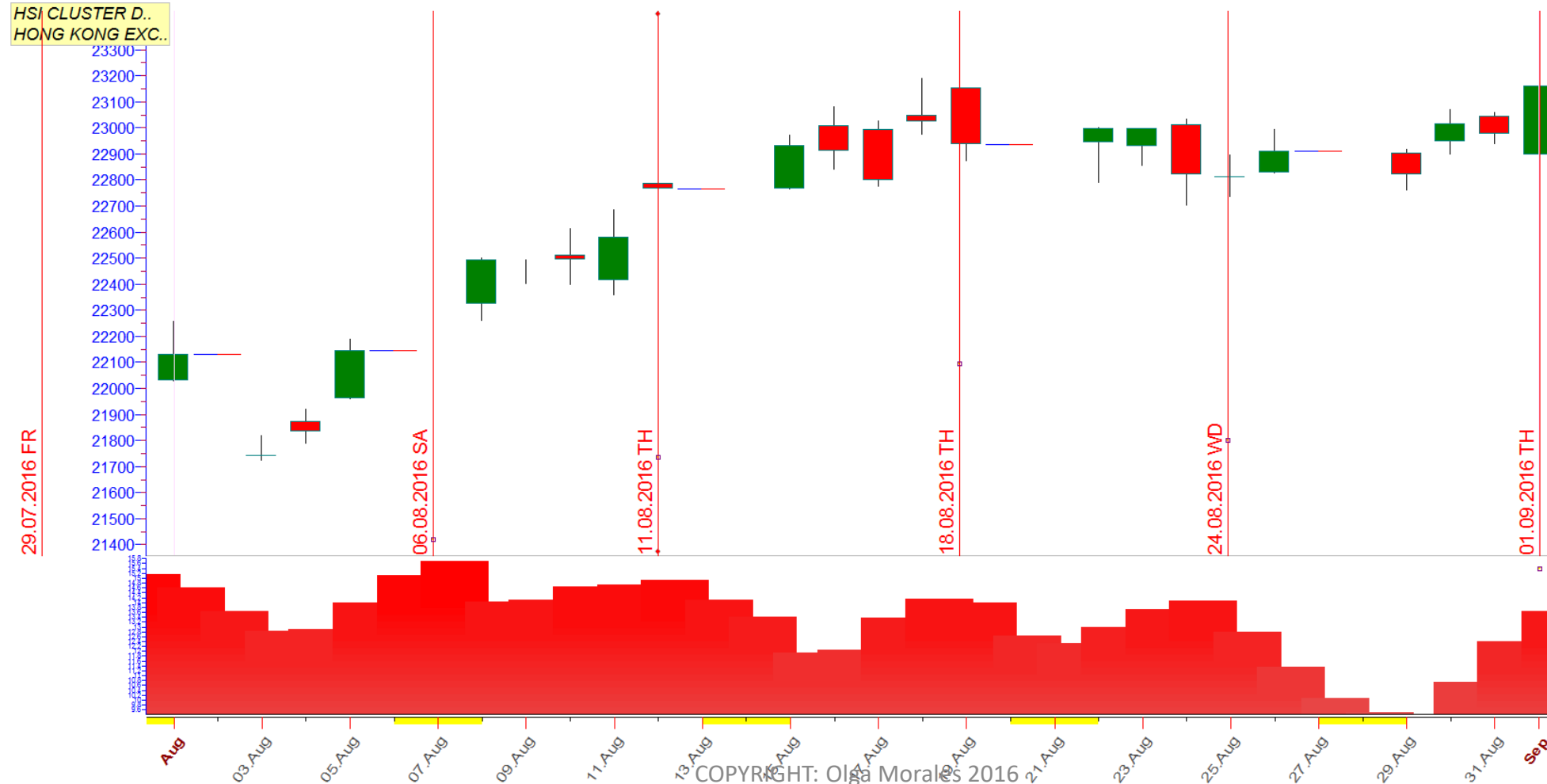
June 2016



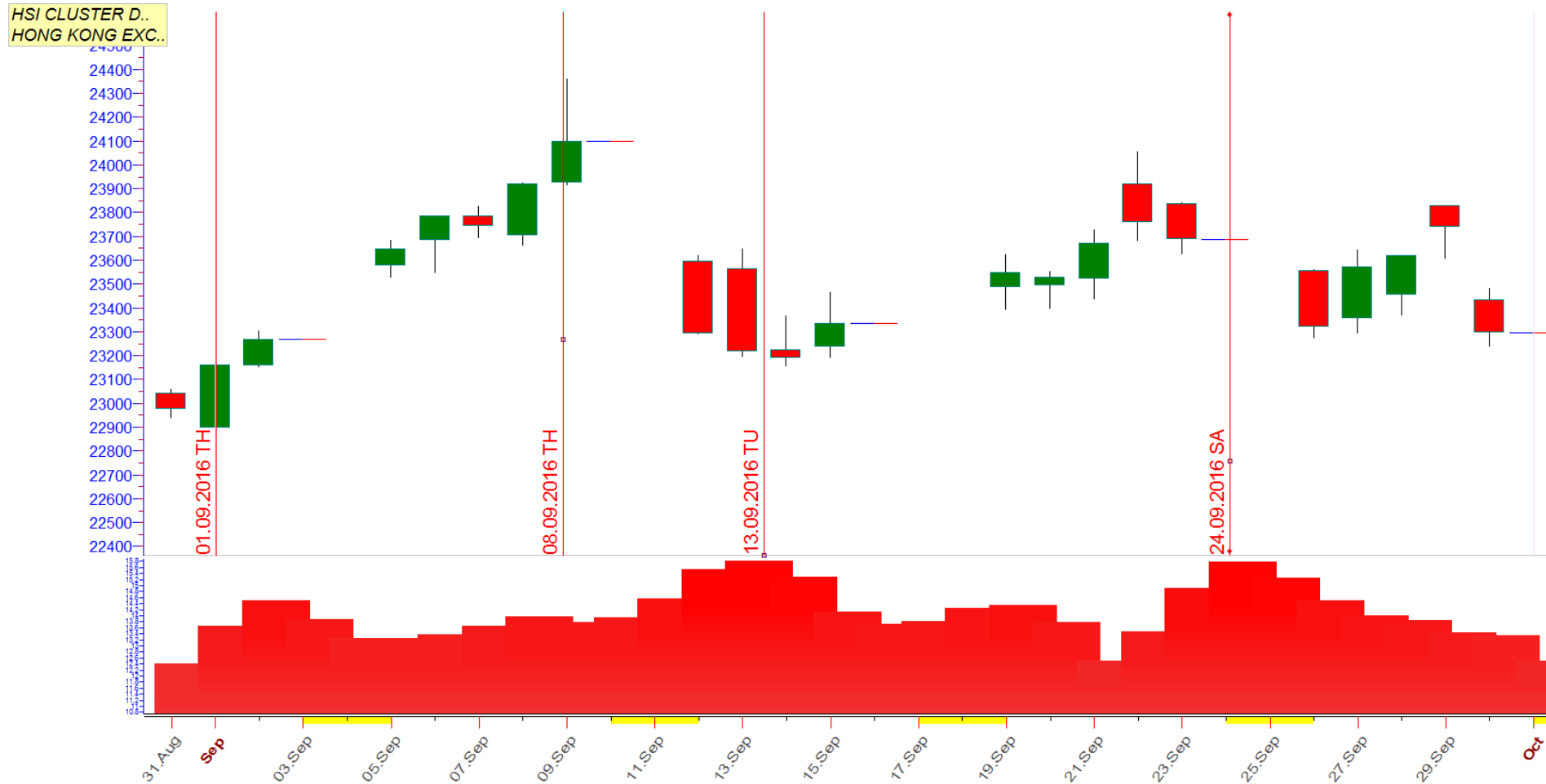
July 2016



August 2016



September 2016



October 2016



2016

November 2016

