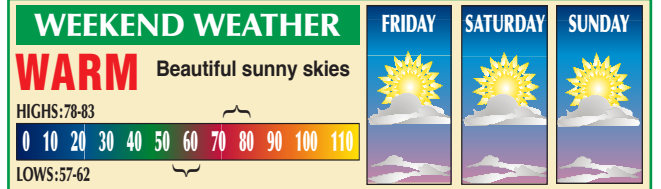


Cool Down with some  
**ICE CREAM**



PAGE  
5

**WEAR YOUR MASK**  
**STOP the SPREAD**



# San Leandro Times

AN INDEPENDENT HOMETOWN NEWSPAPER SERVING SAN LEANDRO, ASHLAND, SAN LORENZO AND SHEFFIELD VILLAGE

VOL. 30 • NO. 29

THURSDAY, JULY 16, 2020

SAN LEANDRO • CALIFORNIA



PHOTO BY JIM KNOWLES

## Sculpture Turns Four

The Truth Is Beauty sculpture, the modern day Statue of Liberty, stands tall through the pandemic emergency, the business shutdown, the recession, you name it. The statue has now stood in San Leandro for four years.

## Grand Jury Paints Grim Picture for Future of Alameda County Hospitals

By Amy Sylvestri  
San Leandro Times

The annual Alameda County Civil Grand Jury report has delivered a harsh assessment of looming financial failure at local safety net hospitals that serve East Bay cities and the unincorporated area.

Known as the Alameda Health System (AHS), it was established by the county to meet state-mandated health care obligations. It operates five hospitals (John George Psychiatric, Fairmont, Highland, Alameda, and San Leandro) and four wellness centers with over 800 beds and a

thousand physicians.

The Grand Jury report spells out a dire financial situation for AHS: As of 2019, the system has a negative net worth (owes more than it owns) of \$300 million and forecasts case deficits of \$123 million for 2020, and \$82 million for 2022 — a total of \$453

million estimated even prior to the pandemic.

The report reads, "County witnesses testified that AHS's use of a balanced operating budget does not adequately represent the actual financial position of AHS, which contributes to the tensions

see GRAND JURY, page 4

## Council May Place Transfer Tax on November Ballot

City officials cite decreased revenue as need for new tax

By Michael Singer  
San Leandro Times

The San Leandro City Council is considering a tax increase on San Leandro property sales that may make its way to the November ballot.

The proposal comes after a survey found public support for funding services like maintaining 911 response times, reducing crime, and filling in potholes.

The proposed increase would be used to offset losses due to the novel coronavirus pandemic, according to City Manager Jeff Kay. The tax would be levied on real property transfers on full value such as when a home or business building is purchased.

The current transfer tax rate in San Leandro is \$6 per \$1,000, which would be \$3,000 on a building that sells for \$500,000. The proposal would add another \$5, increasing the transfer tax to \$11 per \$1,000.

The city manager and staff made the recommendations after presenting the findings of the survey to the council at the July 6 meeting.

The City commissioned Godbe Research to conduct a survey of local voters to gauge San Leandro's response to the COVID crisis, satisfaction with taxpayer-funded services, and assess how voters would support a property transfer tax to maintain those services.

Of the more than 35,000 likely voters in San Leandro, 630 people were interviewed by phone. A supplemental survey of

see TAX, page 10

## SL Man Charged in Fatal Hit And Run

A San Leandro man who struck and killed a bicyclist while speeding has been charged with murder and felony hit-and-run.

The bicyclist was hit on Hesperian Boulevard near Drew Street on Sunday, June 28, at about 7:40 p.m. Witnesses said the bicyclist was riding southbound on the shoulder of Hesperian when he was struck by a Lexus sedan, according to San Leandro police.

Patrol officers responded and found 52-year-old San Lorenzo resident Mark Moore unresponsive and suffering from life threatening injuries. Moore was transported to Eden Hospital in

see FATAL, page 2

## State AG Denies Request to Investigate Shooting

By Jim Knowles  
San Leandro Times

The state attorney general turned down San Leandro's request to investigate the shooting of Steven Taylor, who was killed by San Leandro police on April 18 at a Walmart.

The San Leandro City Council directed the city manager to send a letter to the state attorney general requesting a separate

investigation, in addition to the investigations underway by the San Leandro Police Department and the Alameda County District Attorney's Office.

But California Attorney General Xavier Becerra replied in a letter last week that it's the job of the county district attorney to investigate these cases, and that the state attorney general's office would only investigate if there

were exceptional circumstances.

"Absent a conflict of interest, abuse of discretion or other exceptional circumstances, the Department of Justice generally does not assume responsibility for investigations or prosecutions of officer involved shootings," Becerra wrote. "California's 58 district attorneys are charged with investigating and prosecuting criminal cases as the elected pub-

lic prosecutors for each county."

Becerra added that Taylor's death is currently being investigated by local authorities, and that his office isn't aware of any information that would require a separate investigation by his office, or any conflict of interest that prevents the current investigation from proceeding.

Taylor, a 33-year-old who

see DENIES, page 12

## INSIDE YOUR TIMES

### SERVICE

New naval vessel named after Oakland. **Page 2**

### WILDLIFE

Hummingbird eggs hatch in backyard. **Page 3**

### FOOD

How about some fresh peach ice cream? **Page 5**

**38,500 EVERY THURSDAY**  
THE LARGEST FREE-DELIVERED NEWSPAPER IN THE EAST BAY

Classified Ads .....	8
Crossword .....	9
Homes .....	6
Home Services .....	8
Inquiring Reporter ...	11
Letters .....	11
Lifestyle .....	5
Music .....	12
Obituaries .....	10
Pets .....	4
Seniors .....	7



## MEETING SCHEDULES

### CITY COUNCIL

Council meets on the first and third Monday of each month at 7 p.m. in City Council Chambers, City Hall, 835 E. 14th St., San Leandro. For more information, call the City Clerk at 577-3367.

### SAN LEANDRO SCHOOL BOARD

Board meets on the second Tuesday of each month at 7 p.m. in the City Council Chambers, City Hall, 835 E. 14th St., San Leandro. For more information, call Michelle Mayfield at 667-3522.



## San Leandro Times

An independent hometown newspaper serving San Leandro, Ashland, San Lorenzo and Sheffield Village

### EDITORIAL

#### Fred Zehnder

Editor and Publisher

#### Jim Knowles

Managing Editor  
jimk@ebpublishing.com

#### Mike McGuire

City Editor

#### Steve Schaefer

Auto Editor

#### Contributing Writers

Buzz Bertolero

Carl Medford

Linda Sandsmark

### PRODUCTION

#### Howard Morrison

Manager

#### Kayla Steinorth

Art Director

#### Moxie Morrison

Assistant

### OPERATIONS

#### Claudette Morrison

Business Manager

### ADVERTISING

#### Display Advertising

Claudette Morrison

Classified Advertising

Patrick Vadnais

### HOW TO REACH US

San Leandro Times  
2060 Washington Ave.  
San Leandro, California 94577

Office hours: Weekdays, 9 a.m. to 5 p.m.

Main Office: (510) 614-1555

Newsroom: (510) 614-1557

Sports: (510) 614-1561

Advertising: (510) 614-1555

Classified: (510) 614-1558

Fax: (510) 483-4209

Email: jimk@ebpublishing.com

www.ebpublishing.com



California Newspaper Publishers Association member

©2019 East Bay Publishing Corporation

## Share Your Photos in 'Our Readers Remember'

The special section, "Our Readers Remember" is coming up in the Aug. 20 issue.

All those memorable photos or stories are welcome. So send it in soon.

In past years, the section featured memories of the year it snowed in San Leandro, a first bicycle, a high school rock 'n' roll band, a cheerleader's memory, flying hang-gliders in the '70s,

and someone who recalled her days working on a small TV station that used to broadcast from a building by the marina.

Whatever it is, people want to see it. Send items by email to jimk@ebpublishing.com or send by mail to San Leandro Times, 2060 Washington Ave., San Leandro CA 94577.

For more information, call 510-614-1557.

## BRT to Start in Late Summer

AC transit is getting ready to start its Bus Rapid Transit (BRT) service later in the summer along East 14th Street and International Boulevard.

AC reminds motorists and pedestrians to use caution in getting used to the new traffic patterns, signs and lane changes.

BRT uses 60-foot electric hybrid buses designed to help reduce emissions along the 9.5-mile corridor between downtown Oakland and the San Leandro BART Station. The service uses primarily bus-only lanes which

results in timely arrivals and decreased traffic delays due to congestion.

Station platforms are at the same level as the bus floor to ease boarding, especially for people with bikes or those using mobility devices and strollers.

BRT station platforms have ticket vending machines and Clipper card readers for fare payment before boarding the bus. The elimination of onboard fare boxes speeds up the boarding process.

see BRT, page 4



A new surface vessel designed for operations near shore by the U.S. Navy and named for the city of Oakland, will be commissioned early next year.

## New U.S.S. Oakland Delivered to Navy

### Third navy vessel to have Oakland namesake

The Navy accepted delivery of the future USS Oakland last week during a ceremony at Austal USA, a shipbuilder based on Blakeley Island in Mobile, Alabama.

It is a fast, agile, mission-focused vessel designed to operate in near-shore environments, but capable of open-ocean combat against such 21st-century coastal threats as submarines, mines and swarming small craft.

The future USS Oakland is the third Navy ship to honor the long history its namesake city has had with the Navy. The first Oakland was commissioned in 1918 and used to transport cargo.

In 1943 the second USS Oakland was commissioned. Though in service for less than seven years, she was key to

many anti-aircraft missions in the Western Pacific—Marshall Islands, Pagan Island, Guam, Iwo Jima, Rota, Peleliu and Okinawa.

After the war, Oakland performed two duty patrols off the coast of China before her decommissioning in 1949.

The Oakland is the 22nd combat ship to join the fleet. Its delivery marks the official transfer of the ship from the shipbuilder to the Navy, bringing the service's inventory up to 300. It is the final milestone prior to its scheduled commissioning in early 2021.

## Fatal: Bicyclist killed

continued from front page

critical condition and succumbed to his injuries two days later.

San Leandro police gathered evidence that led to the arrest of Ric Acosta, a 38-year-old San Leandro resident, as the driver of the Lexus that struck Moore. Police said they later gathered evidence that Acosta struck Moore

with his car intentionally, but police didn't describe what evidence that was.

Last week, the Alameda County District Attorney's Office charged Acosta with first degree murder, and felony hit and run. Acosta is currently being held without bail at the Santa Rita Jail in Dublin.

PERFECTLY  
TENDER &  
GUARANTEED DELICIOUS



GET THE GRILLER'S BUNDLE  
INTRODUCTORY PRICE: \$79.99

4 (5 oz.) Butcher's Cut Filet Mignon  
4 (4 oz.) Boneless Pork Chops  
4 (4 oz.) Omaha Steaks Burgers  
4 (3 oz.) Gourmet Jumbo Franks  
4 (2.8 oz.) Potatoes au Gratin  
4 (4 oz.) Caramel Apple Tartlets  
Omaha Steaks Seasoning Packet  
\$224.91\* separately

+ 4 MORE  
BURGERS  
FREE



20 MAIN COURSES  
+ SIDES & DESSERT

Order Now 1.510.963.4202 | OmahaSteaks.com/family388

Ask for the Griller's Bundle 63281JBH



\*Savings shown over aggregated single item base price. Limit 2. Free burgers will be sent to each shipping address that includes (63281). Standard S&H added per address. Not valid with other offers. Expires 10/31/20. All purchases subject to Omaha Steaks, Inc. Terms of Use & Privacy Policy: omahasteaks.com/terms-of-useOSI and omahasteaks.com/info/privacy-policy or call 1-800-228-9872. Photos exemplary of product advertised.

sheets • rods • tubes • film • hard-to-find plastics



Mr. Plastics™  
Celebrating 34 years!

NEW LOCATION: 844 Doolittle Drive  
OPEN TO THE PUBLIC

web: mr-plastics.com

We Manufacture COVID Clear Acrylic Protective Barriers

510-895-0774

fabrication • cnc machining • design • prototypes



SAVE UP TO \$600 ON  
YOUR PERSONAL  
AUTO INSURANCE

\*Home \*Auto \*Life \*Commercial

G & L Insurance Services  
Allstate Insurance Agency

19845 Lake Chabot Rd. Castro Valley, CA 94546

510-200-7456



Angel Lax  
CV Resident



## Short-Term Inmates Being Released Early To Ease Covid Spread

The California Dept. of Corrections and Rehabilitation is expediting the release of eligible Alameda County inmates with 180 days or less remaining on their sentences, to early parole or probation supervision.

The releases are from facilities where the coronavirus has spread widely and quickly, including several facilities that are reporting significant outbreaks.

When released, each inmate will have increased monitoring by probation or parole officials and will be required to isolate or quarantine for 14 days, whether they test negative or positive.

Those convicted of violent crimes, domestic violence or who are registered sex offenders are not eligible for early-release program. Those who are eligible must have housing plans identified before release.

Multiple county agencies are

involved in the program including Health Care Services, Social Services, Probation, and the Office of Emergency Services.

In addition, many community-based organizations are collaborating to provide wrap-around care, education, and communication for the inmates as well as their families, service providers, and the community.

Statewide, as many as 8,000 California prisoners could be released early, more than half of them by the end of this month, in an attempt to slow the spread of coronavirus inside the state's prisons, according to officials.

More than 2,300 prisoners have tested positive for Covid-19 and at least 31 have died from the disease.

For more information on the accelerated releases, visit [www.cdcr.ca.gov/covid19/expedited-releases](http://www.cdcr.ca.gov/covid19/expedited-releases).

## Covid-19 Testing Available at Marina Community Center

Free Covid-19 testing is now available to everyone, even those without symptoms, at the San Leandro Marina Community Center, and all community testing sites operated by Alameda County Health Services.

No insurance is required and no one is asked about their immigration status.

The hours of operation at the San Leandro Marina

Community Center, 15301 Wicks Blvd., are Tuesdays through Saturdays from 8 a.m. to 7 p.m.

Testing remains by appointment only and can be made by visiting the website <https://lhi.care/covidtesting> or calling toll free 1-888-634-1123. Both the website and phone line provide information in English and Spanish.



PHOTOS BY KAY LOW

## Hummingbirds Make a Home in San Leandro Tree

A couple of hummingbirds hatched in their nest in a yard in San Leandro on April 21. Kay Low took the photos of the birds as they developed, from waiting for their mom to bring them some food, on to where they can fly on their own (upper right). A small hummingbird's wings can beat up to 80 times per second.

## Oakland Aviation Museum Opens Up Outdoor Exhibits

The Oakland Aviation Museum is open to the public for outdoor viewing only, Wednesday through Sunday, from 10 a.m. to 4 p.m.

Indoor exhibits will remain

closed until the current restrictions are lifted.

The museum is located at the

Oakland Airport's North Field, 8252 Earhart Road in Oakland, just off Doolittle Drive.

A FREE WEBINAR

## FIVE WISHES

A unique approach to end-of-life planning

HOPE  
Hospice & Health Services



Preparing for the eventuality of the time when you will pass on is a priceless gift you can leave your loved ones. But pondering medical what-ifs and choices may not be easy conversations to have with your family. Join Hope Hospice as we discuss *Five Wishes*, an easy-to-understand advance healthcare directive that helps you evaluate and record your desires in critical areas of concern.

July 29, 10-11:30 a.m.

August 5, 4:30-6 p.m.

(same program, offered twice)

Register at [HopeHospice.com/townhall](http://HopeHospice.com/townhall).

This is a free webinar.

**Classy Canine's**  
**Wiggle Rumps**  
Dog Grooming Spa  
510.583.7297  
2602 CASTRO VALLEY BLVD  
510.583.PAWS  
Mention this ad for FREE add on Teeth Brushing when getting full groom.

**Law Office of Jeffrey H. Jordan**  
Estate Planning (Trusts & Wills) • Probate • Trust Administration • Property • Transactions • Dispute Resolution (Litigation, Arbitration, & Mediation)

Most initial consultations are free.  
Call about this month's special: 10% off Probate Fees (Terms & Conditions apply!)

1883 E. 14<sup>th</sup> Street, San Leandro  
(510) 357-3404  
[www.JHJattorney.com](http://www.JHJattorney.com)



**WE'RE BACK!**  
Store Re-Opened  
**New Hours**  
*Tuesday - Saturday*  
**10am - 5pm**  
"Make your house a Dupree's home"  
**Dupree's**  
FURNITURE  
EASY LAYAWAY & FINANCING AVAILABLE  
47 Years Experience  
1900 E. 14th St. • San Leandro  
**357-3000**  
[www.Duprees-Furniture.com](http://www.Duprees-Furniture.com)



## Pets of the Week



The shelter has many kittens up for adoption.

The Pets of the Week at the Hayward Animal Shelter are Rumpel the kitten along with several other kittens.

**Rumpel** is a 4-month-old, black-and-white male kitten who is a little shy but will softly meow and sit quietly for pets. He is slowly learning to trust people and is starting to become affectionate.

It's kitten season, the time of year when Hayward Animal Shelter regularly has many kittens up for adoption. To find your perfect new feline companion, visit the shelter's website at [www.Haywardanimals.org](http://www.Haywardanimals.org) and browse the available



Rumpel

kittens.

To adopt Rumpel or another kitten, call the Hayward Animal Shelter at 510-293-7200.

## Grand Jury: 'Fiscal arrangement is untenable'

*continued from front page*

between county staff and AHS." AHS's income comes from patients and supplemental federal, state, and county payments including money from Measure A.

The Grand Jury said it saw evidence of late or erroneous billing and delayed collection efforts which resulted in lost revenue and high labor costs. Almost 80 percent of AHS's expenses are employee wages and benefits and contracting services.

The Grand Jury report states this fiscal arrangement is untenable:

"Evidence considered raised the question for the grand jury: Can AHS ever fully repay its debt to the county? Even with transparent and efficient management, an average annual EBIDA Margin of 3 percent to 5 percent does not appear sufficient to pay off AHS's outstanding debt and buffer against any future financial crises. Alameda County and AHS must collaboratively resolve how to pay for AHS's long-term debts with the county."

The Grand Jury has now required that the AHS Board of Trustees and the Alameda County Board of Supervisors both respond to the Jury's findings and recommendations within 90 days.

In other Grand Jury findings, each year the jury inspects a se-



TIMES FILE PHOTO

The Alameda County Grand Jury report said that the county hospitals, which includes San Leandro Hospital, are not managing their finances properly.

lection of the county's jails and holding facilities. This year, the Sheriff's Eden Township Substation holding facility at 15001 Foothill Boulevard was visited by the Jury in December.

Detainees are held at the substation for a maximum of four hours before transfer to Santa Rita Jail in Dublin and each cell has a bed, sink, and toilet, accord-

ing to the report.

The report found no fault with the operation of the holding facility and said all cells were in "excellent" condition.

Other topics addressed in the 114 page report included an investigation of Castlemont High School in Oakland, which the

Jury concluded was "cheating its students" through grade-inflation in order to meet state standards.

The Jury also criticized the Oakland 911 Communications Center which it described as being in "crisis."

You can read the entire report at [grandjury.acgov.org/](http://grandjury.acgov.org/).

## Zoom Bible School

The San Leandro Church of Christ is offering a free, week-long Vacation Bible School by zoom meeting. Go online with the Squares from 10 a.m. to noon, Monday through Friday on the week of July 27 to 31.

The material will be targeted

to elementary school aged kids, but all ages are welcome. The program includes kids' videos, games, crafts, and other activities focusing on various Bible stories and biblical principles.

Parents will receive an email list of some basic supplies that they will need to gather for the activities.

Contact Woody and Judy Square at [woodysquare@sbcglobal.net](mailto:woodysquare@sbcglobal.net) to register your kids.

## County Health Reports 419 Covid Cases in San Leandro

The number of Covid-19 cases in Alameda County reached 8,321 this week, according to the Alameda County Health Department.

That's 1,434 more cases in a span of a week.

The county totals on Tuesday reported 151 deaths in Alameda County from Covid-19, a 2 percent fatality rate, and 11 more deaths than the previous week.

The county reports 419 Covid-19 cases in San Leandro, as of Tuesday, a jump of 74 cases

in one week.

The county health department's Covid-19 Dashboard doesn't give the number of deaths in each city. But if the rate were the same as the county rate, 2 percent, there would be about eight deaths in this city due to Covid-19.

The highest numbers for Covid-19 in Alameda County are Oakland with 3,172 cases, and Hayward with 1,277 cases. Castro Valley had 239 cases, Fremont 425, Alameda 131, Pleasanton 165, and Union City 263.

## BRT: Timed stoplights

*continued from page 2*

New and upgraded traffic signals are equipped with priority technology to adjust traffic signals in real time and minimize delays.

Since BRT operates primarily in bus-only lanes equipped with transit signal technology, this allows for optimal travel speed while reducing traffic delays. In addition, riders use Clipper card readers and ticket vending machines to pay on the platform, therefore streamlining the boarding process.

For more information, vis-

it [brrt.actransit.org](http://brrt.actransit.org) or call 510-891-4777. The Customer Service Center is open Monday through Friday, 6 a.m. to 7 p.m.; Saturday and Sunday, 9 a. to 5 p.m.

## LEGAL NOTICE

### NOTICE OF PETITION TO ADMINISTER ESTATE OF

**Susan Marie Dailey**  
Case Number:  
RP20061372

To all heirs, beneficiaries, creditors, contingent creditors, and persons who may otherwise be interested in the will or estate, or both, of: **Susan Marie Dailey.**

A Petition for Probate has been filed by **Stonecrest Acquisitions, LLC: Denise Hill, Manager** in the Superior Court of California, County of Alameda. The Petition for Probate requests that **Stonecrest Acquisitions, LLC: Denise Hill, Manager** be appointed as personal representative to administer the estate of the decedent.

The Petition requests the decedent's will and codicils, if any, be admitted to probate. The will and any codicils are available for examination in the file kept by the court.

The PETITION requests authority to administer the estate under the Independent Administration of Estates Act. (This authority will allow the personal representative to take many actions without obtaining court approval. Before taking certain very important actions, however, the personal representative will be required to give notice to interested persons unless they have waived notice or consented to the proposed action.) The independent administration authority will be granted unless an interested person files an objection to the petition and shows good cause why the court should not grant the authority.

**A HEARING on the petition will be held on August 11, 2020, 9:31 a.m., Dept. 202, at 2120 Martin Luther King Jr. Way, Berkeley, CA 94704.**

**IF YOU OBJECT** to the granting of the petition you should appear at the hearing and state your objections or file written objections with the court before the hearing. Your appearance may be in person or by your attorney.

**IF YOU ARE A CREDITOR or a contingent creditor of the decedent**, you must file your claim with the court and mail a copy to the personal representative appointed by the court within the **later of either (1) four months** from the date of first issuance of letters to a general personal representative, as defined in section 58(b) of the California Probate Code or (2) **60 days** from the date of mailing or personal delivery to you of a notice under section 9052 of the California Probate Code. **Other California statutes and legal authority may affect your rights as a creditor. You may want to consult with an attorney knowledgeable in California law.**

**YOU MAY EXAMINE the file kept by the court.** If you are a person interested in the estate, you may file with the court a Request for Special Notice (form DE-154) of the filing of an inventory and appraisal of estate assets or of any petition or account as provided in Probate Code section 1250. A Request for Special Notice form is available from the court clerk.

Attorney for petitioner: Heather Ledgerwood, Esq.  
84 W. Santa Clara Street, Suite 540  
San Jose, CA 95113 800-835-2634

LEGAL RP20061372

## LEGAL NOTICE

FILED  
JUNE 11, 2020  
MELISSA WILK  
County Clerk  
ALAMEDA COUNTY  
By-----, Deputy  
FILE NO. 570690

### FICTITIOUS BUSINESS NAME STATEMENT

Pursuant to Business and Professions Code Sections 17900-17930

The name of the business(es): Pamper and Beyond located at 2747 76th Avenue, Oakland, CA 94605, in Alameda County, is hereby registered by the following owner(s): LaTresca Porter, 2747 76th Avenue, Oakland, CA 94605. This business is conducted by an individual. This business commenced N/A. /s/ LaTresca Porter This statement was filed with the County Clerk of Alameda County on date indicated by file stamp above.

Expires JUNE 11, 2025  
JUNE 25, JULY 02, 9, 16, 2020  
271-SLT

### KIM BROS. JEWELRY • 357-4069

14393-A WASHINGTON AVE. • SAN LEANDRO (NEAR PAK 'N' SAVE)  
OPEN WED-SAT 11 (ISH) AM-3PM / CLOSED SUN-TUES

**WE'RE OPEN - LIMITED HOURS**

**25%-50% OFF**

\*Selected Merchandise • Expires 7-31-20.

**\$800 NO LIMIT!**

**Battery Replacement**  
REGULARLY \$11.00 • EXCEPT LITHIUM  
With this ad. Expires 7-31-20.

**20% OFF**

**Jewelry & Watch Repair**  
With this ad. Expires 7-31-20.

## San Lorenzo Student Makes Dean's List at Oregon State

Minnette D. Tiamsic of San Lorenzo, a senior majoring in anthropology, was named to the Dean's List for the spring term at Oregon State University.

Students must earn a B-plus (3.5) or better to make the list. To be on the Honor Roll, students must carry at least 12 graded hours of course work.

Oregon State University is in the town of Corvallis, Oregon.

### This Day in History...

On July 16, 1969, Apollo 11 blasted off from Cape Kennedy on the first manned mission to the surface of the moon. On this date in 1790, a site along the Potomac River was designated the permanent seat of the United States government. The area became Washington, D.C.



## LIFESTYLE

## The Scoop on Homemade Ice Cream



strawberries to the chilled mixture before pouring into freezer can.

**ROCKY ROAD ICE CREAM**

- 1 (14-ounce) can sweetened condensed milk
- 1/2 cup unsweetened cocoa powder
- 2 cups heavy cream
- 1 cup light cream
- 1 tablespoon vanilla extract
- 1/2 cup chopped pecans
- 1 cup miniature marshmallows

In a medium saucepan over low heat, cook and stir condensed milk and cocoa until smooth and slightly thickened, 5 minutes. Remove from heat, and allow to cool slightly. Stir in heavy cream, light cream, and vanilla. Refrigerate until cold.

Pour mixture into the canister of an ice cream maker, and freeze according to manufacturer's directions.

Stir in nuts and marshmallows halfway through the freezing process.

Makes about 12 servings.

**COFFEE ICE CREAM**

- 1 cup heavy cream
- 1 cup milk
- 1/3 cup instant coffee granules
- 1 cup sugar
- 3 eggs
- 1 teaspoon vanilla
- Pinch salt

Combine the cream and milk in a heavy-bottom saucepan and heat to boiling. Add the coffee granules and blend.

Beat together the sugar and eggs until pale and thick. Add a little of the hot milk mixture to the egg mixture, stirring constantly. Pour back into the saucepan and cook over moderate heat until slightly thickened. Be careful not to boil.

Remove from heat and add the vanilla and salt. Pour into an ice

cream make and freeze according to manufacturer's directions.

**BUTTER-PECAN**

- 2 cups light cream
- 1 cup brown sugar
- 2 tablespoons butter
- 2 cups heavy cream
- 1 teaspoon vanilla extract
- 1/2 cup toasted chopped pecans

Combine the light cream, sugar, and butter in a medium saucepan. Cook, stirring constantly over low heat until bubbles form around the edges of the pan. Let the mixture cool and put it in the ice cream machine. Stir in heavy cream and vanilla. Freeze as directed by your machine's manufacturer. Add pecans after ice cream begins to harden.

**FRESH PEACH**

- 6 medium peaches (about 2 pounds), peeled and pitted

## Tips on Freezing

Ice cream makers vary enormously in price, but if you don't mind doing a little more work, even inexpensive, hand-cranked models turn out excellent products.

The lower-cost units require layering ice and salt around the ice cream can to chill the mixture as it freezes. To achieve a smooth-textured ice cream, it's important to follow the manufacturer's directions for the proportions of ice and salt.

Layers of ice and salt should be added until they reach near the top of the ice cream can. During the 30- to 40-minute freezing process, ice should be added to maintain this level. Check what type of salt is required. Some use rock salt, others table salt.

It takes about 15 pounds of crushed or cracked ice to make a batch of ice cream.

- Use only the best ingredients — fresh cream and milk, real vanilla, and fresh fruit.

- When using liqueur, add only enough to flavor the mixture. Using too much alcohol will prevent ice cream from freezing.

- 1 cup sugar
- 3 cups heavy cream
- 1 cup milk
- 2 teaspoons vanilla extract

In a large bowl, mash the peaches into a coarse puree. Stir in 1/4 cup of the sugar. Let stand 1 hour.

Add the cream, milk, remaining 3/4 cup sugar, and vanilla to peaches, stirring to blend. Refrigerate,

covered, until very cold, at least 3 hours or as long as 3 days.

Stir the mixture to blend and pour in to the canister of an ice cream maker. Freeze according to the manufacturer's directions. Eat at once or transfer to a covered container and freeze up to 8 hours.

Makes 1-1/2 quarts.

Making ice cream at home is almost as much fun as eating it. But it's no way to save on grocery bills; a quart of homemade will cost about the same as the same amount of store-bought premium.

Sugar is the common ingredient to use as a sweetener in all ice cream. It increases the palatability and improves the body and texture.

The best, richest ice creams are made with eggs which are added to make the fat and water more miscible and also to improve the whipping ability.

If your recipe calls for uncooked eggs, consider cooking the eggs and milk (to at least 160°F). Though the risk of salmonella in uncooked eggs is relatively small, the illness can be serious for many people.

Before starting to freeze the ice cream, make sure all parts of the freezer coming in contact with the ice cream are clean and have been scalded.

Let the can cool before pouring in the mix and have ingredients as cold as possible before pouring them into the freezer can.

Homemade ice cream should not be stored longer than 2 or 3 days because it develops a heavy, icy consistency. It's better to eat it right away — easy advice to follow.

**BASIC OLD-FASHIONED VANILLA ICE CREAM**

- 6 egg yolks
- 1-1/3 cups sugar
- 1/2 teaspoon salt
- 4 cups scalded milk
- 2 cups heavy cream
- 2 tablespoons vanilla extract

Beat egg yolks with sugar and salt in a medium-size saucepan; stir in 2 cups of the milk. Heat slowly, stirring constantly, just until sugar dissolves. Pour into a large bowl; chill until mixture is cooled, at least 30 minutes.

Stir in remaining milk, cream and vanilla. Pour into the 16-cup can of a hand-cranked or electric ice cream freezer. Freeze, following manufacturer's directions. Store in freezer for 2 hours before serving. Makes about 2-1/2 quarts.

If you like, add 2 cups of puréed

**The Entire line of  
Nordic  
Naturals**

**25% OFF**

*On Sale in July*

**NORDIC  
NATURALS®**



**HEALTH UNLIMITED**

— NATURAL FOODS —

**San Leandro**  
182 Pelton Center  
(510) 483-3630

**Castro Valley**  
3446 Village Dr.  
(510) 581-0220

Since  
1969

CROSSWORD  
PUZZLE ANSWERS

C	A	R	E		C	H	I	T		H	A	J
A	R	I	D		A	O	N	E		A	L	A
L	I	N	D		R	U	L	E		R	O	Z
M	A	G	I		B	R	A			J	E	E
				E	G	O		W	H	O		
S	U	M	M	O	N		S	A	H	A	R	A
A	R	B	O	R				U	N	B	A	R
C	L	A	N	G	S		I	N	N	A	T	E
				E	E	C		S	T			
U	G	L				A	W	L		C	U	R
S	U	E				A	R	E	A		A	V
E	R	A				S	C	A	N		S	E
D	U	N				H	E	R	D		H	A

**Phở AN HÒA**

*Vietnamese Noodle House*  
14391 Washington Ave.  
San Leandro  
(Pak 'N Save Shopping Center)



"THE BEST  
NOODLE SOUP  
IN TOWN"  
**352-2728**  
FAX 352-2732

Seafood Noodle Soup, Chicken Noodle Soup, Beef Noodle Soup, Crispy Noodle, Pan-Fried Noodle, Vermicelli, ect....  
We also have Rice Dish: Grilled Lemongrass Chicken, BBQ Pork, BBQ Beef, Teriyaki Chicken, Steamed Salmon, Deep-Fried Sole Filet, Fried Rice, and much more... Don't forget to try our Tropical Milk Shake!

**BRING IN THIS AD FOR A 10% DISCOUNT!**

OPEN MON-SAT 10AM-9:45PM & SUN 10AM-9:30PM

## ANNUAL "OUR READERS REMEMBER" SPECIAL SECTION

**We want to hear  
your stories!**

**Published  
August 20, 2020**

**We invite  
our readers to share  
their stories and photos —  
old and not so old — of life in San Leandro.**

All photos will be returned. Please include your name, address and telephone number on the back of each photo. Items must be submitted by Friday, July 5, at 12 p.m. For more information, call Jim Knowles at 614-1557. For advertising information, call Claudette Morrison at 614-1559 or Linda Nakhai at 915-1513.

**San Leandro Times**

**DELIVERED TO OVER 30,000 HOMES — TOTAL CIRCULATION 38,500**

2060 Washington Avenue • San Leandro, California 94577  
**(510) 614-1555**

**FAX (510) 483-4209**



# REAL ESTATE GALLERY

## REAL ESTATE REALITY

By Carl Medford, CRS  
Special to the Times

GUEST COMMENTARY



## Homeward Migrating Adults Causing a Rental Crisis

As every bachelor knows, it is cheaper for two to live together than one. Evidently, that reality has hit a wider audience: with the advent of COVID-19. The number of adults who are currently living with parents or grandparents has skyrocketed to an all new high.

According to data released by Zillow, over 2.7 million adults moved "home" in the months of March and April, 2020, bringing the number nationwide to 32 million – a staggering increase of 9.7% from the same period last year.

This number represents the largest number of adults living with parents in recorded history.

There are many reasons, including:

Some lost jobs and can no longer afford to live on their own. Moving home is a way to slash expenses, wait out the

current situation and feel safe and secure.

Fear of infection has driven some to bail out of areas where the virus has higher-than-normal infection rates.

College and university closings have forced students to head home until the institutes reopen.

Many planning on moving abroad for jobs or education have been forced to stay locally until other countries open again.

Others, able to work from home, have taken this as an opportunity to move home simply to be with family during the crisis.

Whatever the reason, the migration is having a devastating effect on a rental housing market. Lillian Dickerson, staff writer for Inman News, states, "Among 18 to 25-year-olds, a 12% decline in individuals living on their own translates into a \$726M slash in rent revenue, according to Zillow. That's 1.4% of the US rental market."

This paints a grim forecast for residential rentals, already taking it in the chops due to the coronavirus pandemic. Landlords have seen a dramatic increase in late or postponed rent payments and, with current bans on evictions in many regions across the country, are feeling significant pain.

While it might be easy to think that rental properties are owned by large corporations who can afford to take a loss, the truth is that a very large percentage of homes for rent in

the US belong to mom-and-pop landlords who only own one or two rental properties. For these individuals, the loss of a single month's rent cuts deep.

With no immediate answers, landlords are hunkering down and looking for ways to weather the crisis. It is a severe storm for sure.

Carl Medford is a licensed Realtor with Keller Williams Realty and a licensed general contractor. This article is sponsored by the Central County Marketing Association.

## 27819 Hummingbird Court • Hayward • \$475,000



### Welcome Home!

Lovely and rarely available single-story, end-unit townhouse with two bedrooms and one bath, located in the Glen Eden community in South Hayward. Fresh Paint. Kitchen and dining combo. In-unit laundry hookup and air conditioning. Nice size patio includes a storage shed. Rear access to the assigned carports. Perfect home for first-time buyer and investor. Centrally located - within a few minutes drive to Costco, Southland Mall, Union Landing, Bridges, 880 and 92 freeways, schools and BART.



### Malanie Yan

(510) 325-1163

Cal BRE #01479962

United Brokers  
REAL ESTATE  
www.ubre.com



## Rogue Growth on Rose Bushes

By Buzz Bertolero  
Special to the Times

**Q** I have several beautiful rose bushes, but they are developing small red flowers on some aggressive growth.

Some of these shoots are over eight feet long. What can I do to prevent this from happening?

**A** This type of rogue growth is common on Hybrid Teas, Grandiflora, and Floribunda type roses. It's merely sucker growth. Today's rose types are not growing on their own roots.

Instead, they're budded on to a second rose species known as the rootstock. The aggressive long shoots and cherry-red flowers are the primary methods of identifying this growth.

You'll also notice space

between thorns is much further apart than the desired variety. The rootstock and the desired variety are joined together at the bud union. The bud union is the large knot near the ground.

Any growth that originates below the bud union or off the roots is sucker growth. We also find this on climbing and tree roses besides bush varieties.

Unfortunately, roses sucker naturally, so it's impossible to prevent it from reoccurring. It's necessary to recognize them before pruning, otherwise you'll trim it back, and eventually, it will dominate and take over the bush.

Your best option is to remove the shoots as they develop, but it can be done at any time of the year. The key is recognizing the rogue growth and then removing it. It's a task that you do a

couple of times per year.

**Q** When is the best time to use a pre-emergent weed control?

**A** Pre-emergent herbicides are those chemical weed killers that control unwanted vegetation from seed. They can be applied year-round and are ineffective once the seeds germinate and develop roots.

They're best used right after planting rooted trees, shrubs, ground covers, annuals, perennials, bulbs, and edibles.

With new plantings, it's applied just before watering the plants. Moisture is critical in activating the chemical barrier that kills the seeds. As long as you don't break this barrier by cultivating, the pre-emergent herbicide should last the season and double-check it for a specific time period.

With an established landscape, you should re-apply pre-emergent herbicides annually before the rainy season starts if the area is under irrigation or just before the first significant

rain of the season.

It's applied right over the top of existing plants without harming them. There are many brands available, so check with the nursery profession for his or her recommendation.

With lawns, there are specific turf products for controlling both grassy and broadleaf weeds. Also, there are no products available as a pre-plant before laying sod or sowing grass seed, and they're only applied to an established lawn.

Pulling a few weeds is not a big deal, but manually weeding a yard is, so I view pre-emergent's herbicides as a time saver.

Your best organic method is to manually remove the unwanted growth, otherwise a pre-emergent herbicide could be considered.

Buzz Bertolero is an Advanced California Certified Nursery Professional. The Dirt Gardener's website is [www.dirtgardener.com](http://www.dirtgardener.com) and questions can be sent by email to [buzz@dirtgardener.com](mailto:buzz@dirtgardener.com) or on Facebook at [Facebook.com/Buzz.Bertolero](https://www.facebook.com/Buzz.Bertolero)



& ASSOCIATES

PROPERTY  
MANAGEMENT &  
REAL ESTATE SALES

Sam & Jessica  
Medina

510.481.8400

DRE #01838297

"Your Neighbor & Realtor!"



Antonio & Alexia Cardenas  
"Realtors in Motion"

Ballroom Dancers

"The Agents with the Visual Tours"

(510) 326-4263

Visit us @

[www.ListedbyAntonio.com](http://www.ListedbyAntonio.com)

R.E. eBroker Inc. • A Virtual Real Estate Brokerage



## Robert Jones and Associates

Selling San Leandro Since 1964 • [www.RobertJonesandAssociates.com](http://www.RobertJonesandAssociates.com)



Robert Jones  
DRE# 00276097



Matt Jones  
DRE# 0137894



John Chovanes  
DRE# 01853764



Ron Trentler  
DRE# 02068317

Call Us For All Your Real Estate Needs...  
We're Here For You!

142 JOAQUIN AVE. • SAN LEANDRO • 357-0120

## Wear Your Mask Stop the Spread

Sales ~ Property Management ~ Leasing



581 E. 14th St. • San Leandro • 632-1234

[www.deadrich.com](http://www.deadrich.com) CBRE #00360465

## Long-Term Mortgage Rates Drop to New Record Low

The average 30-year fixed-rate mortgage interest rate fell from 3.07 percent to 3.03 percent, the lowest rate in Freddie Mac's survey history dating back to 1971.

A year ago at this time, the 30-year rate averaged 3.75 percent.

Fifteen-year fixed-rate averaged 2.51 percent, down from

2.56 percent.

"The summer is heating up as record low mortgage rates continue to spur homebuyer demand," said Sam Khater, Freddie Mac's Chief Economist. "However, it remains to be seen whether the demand will continue if COVID cases rise to the point that it hinders economic growth."



# SENIORS

## Signing Documents In Times of COVID

**Q** We recently engaged you to assist my elderly mother to update and revise her estate planning documents, all while she was a patient in a skilled nursing facility under "lockdown" due to the COVID Pandemic. I appreciate that you were successful, but wonder how you were able to deal with the COVID issues that presented. As you know, I reside in another state and was unable to be present.

By Gene L. Osofsky, Esq.  
Special to the Times

**A** Yes, indeed, we were successful, but it took a lot of time to arrange and cooperation from a number of people, including the facility in which your mother resides.

Here are some of the key points:

• **Initial Client Assessment:** In our field, known as Elder Law, we always try to assess the capacity of our client to understand and sign legal documents. As we could not enter the facility, we used technology to conduct real-time interviews with your mother using Face Time and ZOOM.

In all sessions, I was able to see and interact with your mother in real time and thereby assess her mental capacity, which was excellent.

• **The Need for the Ombudsman:** Another issue was the need to involve the County Ombudsman. California law requires that the Ombudsman (i.e., "Patient Advocate") to sign off

anytime a person in a skilled nursing facility, or hospital, is asked to sign an Advance Health Care Directive.

Initially, there was concern that the Ombudsman's office was itself concerned about entering the facility in order to perform its duty. Ultimately, it secured clearance to conduct a real-time interview with your mother using ZOOM, during which the Ombudsman was able to confirm that your mother was making the Directive "of her own free will."

The Ombudsman then "signed off" and transmitted her signature to us via email for inclusion in the final document.

Without the Ombudsman's willingness to participate remotely via ZOOM, we would not have been unable to complete the Directive in compliance with California Law.

• **The Signing Table:** The next challenge was to figure out a way that your mother could sign legal documents in the presence of the notary and witnesses, as appropriate, while still observing safety protocols, i.e. masking, social distancing, and the like.

Initially we considered having the notary and witnesses stand outside her window, but then discovered that her window had a permanent screen, which would prevent the passing of documents back and forth.

The solution was for mother, the notary and witnesses to meet just outside her room on the patio, where there would be no obstruction by the window screen. The facility provided a large

folding table, which permitted your mother to sit at the table, and for the notary and witnesses to move toward the table just to sign and to then move immediately back, a safe distance again, when their signing job was complete.

• **On Site Supervision and Remote Supervision:** To make this work, my legal secretary was present during the entire session with her iPhone running Face Time and connected to my own I-Phone, allowing me to supervise the signing remotely from my home office.

Both my secretary and I examined each signing page before moving on to the next document.

• **The Facility's Cooperation:** We were fortunate in having the cooperation of your mother's facility, Baywood Court in Castro Valley. For the approximate two and half hours that the signing process took, it designated a staff social worker to be right there with us, and another tech with IT skills to facilitate the Zoom session with the Ombudsman. Kudo's to Baywood Court!

So, it was a joint effort and everything fell into place. Your mother was very pleased, and actually so were we.

Gene L. Osofsky is an estate planning and elder law attorney in Hayward. Visit his website at [www.LawyerForSeniors.com](http://www.LawyerForSeniors.com)



**Q** I am thinking about giving my home to my son now, so that probate can be avoided and my affairs simplified when my time comes. Any comment as to whether this plan makes sense?

By Gene L. Osofsky, Esq.  
Special to the Times

**A** Caution: Transferring your home to your son by gift during your lifetime can have adverse tax consequences.

Example: assume that you purchased your home many years ago for \$100,000, and suppose it is worth \$650,000 today. If you give it to your son during your lifetime, he "steps into your shoes" and the IRS will treat the home as if your son had acquired it for \$100,000. This is called "carry over basis." If he then sells the home for \$650,000, he will be obliged to recognize the \$550,000 difference (\$650K - \$100K) as capital gain and pay tax accordingly.

This could result in a whopping tax bill for him and actually lessen the net value of your gift.

True, there would be some relief from this tax situation if your son moved into the home and lived in it for at least 2 years before sale. In that event, he would be entitled to exclude a part of the capital gain, i.e. \$250,000 if he is single and up to \$500,000 if he is married.

However, this 2 year residential requirement is often impractical if your son already owns a

home, or plans to sell it sooner than 2 years, or prefers to treat it as a rental.

By comparison, if you hold the home until your death and pass it to your son as an inheritance, this tax problem can be avoided. The IRS will then treat the home as if your son had acquired it at its date of death value.

In tax parlance, the home's tax basis would be "stepped up" to its market value at the date of your death. Example: if it is worth \$650,000 at your death and your child then sells it for \$650,000, his capital gain would then be "0" and no tax would be due. Quite a difference!

In your situation, you may wish to consider a Living Trust, which would accomplish your objective of avoiding probate while simultaneously obtaining the favored tax treatment which accompanies transfers upon death.

This arrangement would also allow you to retain home ownership in case you later need to obtain a reverse mortgage to help with your future long-term care expenses.

Sometimes parents who have received long term care benefits from the Medi-Cal program, consider a gift of their home in order to avoid a Medi-Cal recovery claim after their death. However, if that is the motivation, there are ways to both avoid a Medi-Cal recovery claim while still preserving favored tax treatment.

If this is a concern, professional guidance from an attorney knowledgeable in Medi-Cal planning is extremely important.

Gene L. Osofsky is an elder law and estate planning attorney in Hayward. Visit his website at [www.LawyerForSeniors.com](http://www.LawyerForSeniors.com).



## Landmark Villa

### Senior Residential & Assisted Living



- 24 Hour Care • Socializing
- Activities • Chef Prepared Meals
- Housekeeping • Laundry
- Quality of Life • Independence
- Legacy

### Private and Shared Apartments Available!

Call today for a Free  
Lunch & Tour  
**510-276-2872**

License#015601501



Yes, we are  
Pet Friendly!

21000 Mission Blvd., Hayward CA 94541

## INDEPENDENT LIVING ~ ASSISTED LIVING

# JOIN US FOR A Personal Tour

## SENIOR LIVING IN SAN LEANDRO

Imagine a retirement lifestyle with all of the support & services you desire. Phone us today to learn more about the Pacifica experience.

**510-400-7290**

License #015601394



348 West Juana | San Leandro, CA 94577 | [PacificaSanLeandro.com](http://PacificaSanLeandro.com)



**PACIFICA**  
SENIOR LIVING

SAN LEANDRO

Independent • Assisted Living

## It's Time to Take Advantage of the Lowest Mortgage Rates in Years EVER!

If you are 62 or older, and qualify, a reverse mortgage may be able to provide greater financial flexibility, for things like:

- Turn Home Equity into Cash or a Stand-by Line of Credit
- Refinance & pay off existing Mortgage(s) and or Other Debt
- No Monthly Mortgage Payments required

Serving the  
Bay Area!

Borrower to remain current on their property taxes and homeowners insurance and HOA fees, occupy home as primary residence and maintain property.



**REQUEST A FREE QUOTE**  
**510-583-8123**

**LORI REISFELT** NMLS ID 291773  
LICENSED LOAN OFFICER

"I pledge to provide straight forward information and excellent service."



Licensed by the Department of Business Oversight under the California Residential Mortgage Lending Act. #4130937 NMLS#7147. Equal Housing Lender. NMLS Consumer Access: [www.nmlsconsumeraccess.org](http://www.nmlsconsumeraccess.org). This Material is not from HUD for FHA, and was not approved by HUD, FHA or any other government agency.



# Tax: Survey: 50.1 percent support tax hike

continued from front page

2,113 residents responded either online or by mail.

People responding to the survey said the top four issues important to San Leandro include repairing potholes and fixing city streets; supporting small businesses and residents through the economic recovery from the COVID-19 crisis; maintaining 911 emergency response times; and keeping youth violence prevention and gang intervention programs intact.

"The City is considering budget revenue and reductions at the same time," said Deputy City Manager Eric Engelbart. "Increasing taxes on home sales has been part of an ongoing discussion for nearly two years. Now we are facing budget challenges because of the economic impact of Covid. The City has taken several steps to tighten its spending including a soft hiring freeze and reforming its rainy-day fund."

To address the loss of revenue, Engelbart said the City Council also voted to eliminate several vacant staffing positions in the police department. Several other staffing positions in city government remain vacant due to the hiring freeze.

"Coupled together, these actions have resulted in some service level disruptions," Engelbart said. "The ongoing public closure of the City's libraries and other facilities was necessitated by the countywide public health orders. Those closures are not due to the staffing level impacts. Notwithstanding the shelter-in-place, we have no plans to reduce hours at City facilities at this time."

The May survey found a narrow margin of 50.1 percent of



TIMES FILE PHOTO

A majority of people (50.1 percent) who took the city survey said they would support a higher property transfer tax to support services, such as quick 911 response times.

voters supports an increase to the property transfer tax. A similar survey conducted last year found 54 percent of voters supporting a transfer tax.

Paul Litvinchuk, who has been a realtor for 43 years, says increasing taxes on home sales comes at a bad time considering home sales are not as robust since Covid and the federal government's requirement for flood zone insurance has expanded to more areas in San Leandro. With brothers and relatives who work in the city, Litvinchuk said his family would be affected by cuts or new taxes, either way.

"I know we need these services and personally, I would be OK with it, but my customers would probably feel differently because they would have to pay more money if they go to sell their homes," Litvinchuk said. "That cost would likely be split between buyer and seller, but that

makes San Leandro a bit harder to market over other cities in the area."

San Leandro is currently a bargain at \$6 per \$1,000 sold. The property transfer tax in Hayward is \$8.50 per \$1,000. Albany set its tax at \$11.50, Alameda at \$12, and Piedmont at \$13. The unincorporated areas of the county, San Lorenzo and Castro Valley, do not charge this tax.

Litvinchuk says the more transparent the City is with its auditing of these funds and the more homeowners understand that these taxes directly support the services they love, the more likely people are to vote in favor of the increase.

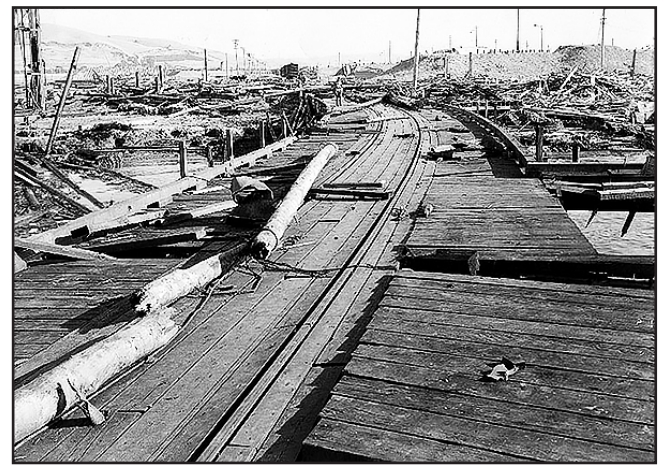
The City Manager's office is expected to present the draft ballot language as well as the resolution and ordinance at the July 20 City Council meeting. If approved, the City Attorney will provide an impartial analysis.

San Leandro has until the filing deadline of Aug. 7 to put the tax on the November ballot.

The pandemic shutdown produces some savings as well when employees are furloughed.

The City estimates that approximately \$150,000 has been saved thus far in labor costs that would have otherwise been paid to part-time staff who were furloughed as a direct result of the pandemic. Deputy City Manager Eric Engelbart says the number excludes ongoing vacancy savings derived from full-time staff positions that are vacant due to natural attrition.

At the same meeting, the City Council also adopted further tenant protections against Covid-related evictions, set guidelines for curbside pickup at local restaurants, and spotlighted the \$250,000 granted to local businesses to offset losses due to Covid-19.



U.S. NAVY PHOTO

The Port Chicago disaster was a deadly munitions explosion that occurred on July 17, 1944, at the Port Chicago Naval Magazine in Concord.

## Park Service to Commemorate Port Chicago Explosion

The National Park Service will hold a virtual commemoration this Friday, July 17, to honor the 320 men who lost their lives in the largest World War II military disaster on the home front when an ammunition ship blew up.

The public can participate from their homes beginning at 1 p.m. For more information, visit: [www.nps.gov/poch/virtual-commemoration.htm](http://www.nps.gov/poch/virtual-commemoration.htm).

The disaster, the largest explosion outside of the atomic

bomb, led to a work stoppage and the largest mutiny trial in history and exposed the shameful injustices of racism and illuminated the issues of segregation and racial inequality in the military.

Unlike past commemoration events, which were limited by access restrictions to the memorial site, this virtual commemoration is open to all and will provide an opportunity to hear about the history of Port Chicago and contemplate its influence on civil rights.

## PG&E Says Public Safety Shutoffs Will be Shorter And Smarter this Year

As part of its ongoing efforts to further reduce wildfire risks, PG&E has announced a number of new and enhanced wildfire mitigation efforts it has implemented as of the end of May.

PG&E officials say that its crews continue to work in the field as part of its Community Wildfire Safety Program, despite the coronavirus crisis, including:

- Installing stronger poles, covered lines and underground lines across 105 miles;
- Inspecting, pruning and removing vegetation that poses a higher potential for wildfire risk along more than 900 mile of lines, with another 900 miles to go;
- Installing 116 weather stations and 50 more high-definition cameras, with targets of 400 and 200 for the year, respectively;
- Separating distribution grids into smaller sections for operational flexibility;
- Installing more than two dozen line switches to redirect power and keep communities energized;
- Creating plans to locate temporary generators at up to 48 substations during a PSPS event to allow PG&E to safely energize thousands of customers and shrink the footprint of Public Safety Power Shutoff events.

The company's efforts this year are expected to reduce the number of customers affected by potential PSPS events by about one-third compared to a similar weather event last year.

PG&E said it has nearly doubled the use of helicopter fleets during events and is using two airplanes with infrared cameras capable of inspecting transmission lines at night.

The company said it will also improve customer alerts with earlier estimates of power restoration. PG&E is providing incentives to vulnerable customers and critical facilities as part of the California Public Utility Commission's (CPUC) Self-Generation Incentive Program (SGIP).

Through the program, vulnerable customers can access incentives from the CPUC to cover up to 100 percent of backup battery and installation costs, based on income, medical needs and likelihood to be impacted by a potential PSPS event.

It is also hosting a series of county webinars through August about the Community Wildfire Safety Program.

For a full schedule of events and more information on PG&E wildfire prevention efforts, visit [www.pge.com/wildfiresafety](http://www.pge.com/wildfiresafety).

Serving Families In Our Community  
With Compassion and Service Excellence



**San Leandro Funeral Home**

407 Estudillo Ave.,  
San Leandro, CA 94577

510.483.5300

[www.sanleandro-fh.com](http://www.sanleandro-fh.com)

(Formerly Guerrero Mortuary)

Serving All Faiths

• Large Chapel

• Reception Room & Kitchenette



FD 442

**SARA L. ENNOR  
LAWYER**

- Wills & Trusts
- Benefits, ERISA
- QDROs

**510-633-9985**

### HOROSCOPE by Salomé

© 2019 King Features Synd., Inc.



**ARIES (March 21 - April 19):** Starting something new is always exciting for the adventurous Aries. And here's the good news: This time you might be able to get some assistance in helping you finish what you've started.



**TAURUS (April 20 - May 20):** Put your daydreaming penchant on hold for now, and face the facts as they are, not as you'd like them to be. Your customary hardheaded approach to "deals," etc., is called for.



**GEMINI (May 21 - June 20):** Problems beyond your control might delay some of your plans. But things should start to get back to normal by midweek. The weekend could bring an unexpected (but welcome) visitor.



**CANCER (June 21 - July 22):** It's a good time to buckle down and tackle those unfinished tasks so you'll be ready to take on other projects. The week's end could bring an invitation from a most surprising source.



**LEO (July 23 - August 22):** Mixed signals could create a few stressful moments for the Lion. But by midweek, explanations should help ease the tension. The weekend is party time! Share it with someone special.



**VIRGO (August 23 - Sept. 22):** This is a good "catching up" week for finishing tasks, calling old friends and maybe reading that book you haven't opened yet or renting that movie you wanted to see again.



**LIBRA (Sept. 23 - October 22):** Money matters should be worked out, even if it takes time away from a more romantic situation. Better to settle things before feelings turn hard and angry on all sides.



**SCORPIO (October 23 - November 21):** A job-related problem could turn out to be less troublesome than it seemed at first. Just a few moments of talk 'twixt the parties resolves everything to everyone's satisfaction.



**SAGITTARIUS (Nov. 22 - Dec. 21):** The Sagittarian Archer takes aim at health and fitness issues this week. Watch your diet, and try to put more exercise time into your typically busy schedule.



**CAPRICORN (Dec. 22 - Jan. 19):** As you continue to focus on a career or job change, it's a good time to look over some of your rarely used skills and see where they can fit into your future workplace plans.



**AQUARIUS (Jan. 20 - Feb. 18):** A loved one's health might be worrisome, but there's good news by midweek. Expect people who share your ideas and your goals to try to contact you by the week's end.



**PISCES (Feb. 19 - March 20):** A colleague's request that makes the typically perceptive Pisces feel uncomfortable is a request you probably will want to turn down. The weekend favors family get-togethers.

### SANTOS-ROBINSON MORTUARY

— Supporting Local Churches and Families for Over 80 Years —

**FUNERAL AND CREMATION  
PROFESSIONALS**

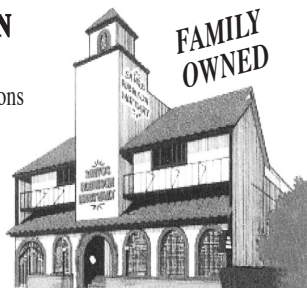
Traditional Services • Cremation Options  
Pre-Arrangements

Serving All Faiths and Cultures

**510-483-0123**

[www.santos-robinson.com](http://www.santos-robinson.com)

CA LIC. FD-81





# OPINION

## LETTERS to the EDITOR

Letters must include the writer's name, address and phone number, and **must be under 300 words**. We reserve the right to edit as necessary. E-mail letters to: [letters@ebpublishing.com](mailto:letters@ebpublishing.com) or fax to: 510-483-4209, or send by mail to: The Editor, San Leandro Times, 2060 Washington Ave., San Leandro, CA 94577.

### Holding Police Accountable

Editor:

Do you feel unsafe in San Leandro? At a recent city council meeting, many current and former residents who are people of color said that they did. But it is the police they fear, not criminals.

In the last few months, Steven Taylor was killed in the midst of a mental health crisis, Emerald Black was kicked and tackled to the ground solely for being a passenger during a traffic stop, and a peaceful homeless person was viciously berated — all at the hands of San Leandro police officers.

Since then, even more stories of past and present misconduct by the San Leandro Police Department have come to light.

Mayor Cutter wrote a letter last week describing tentative efforts to allow for more community input. I encourage Mayor Cutter and the city council to take more decisive actions to show that excessive violence will not be tolerated by SLPD officers.

Release the names of the officers involved in killing Steven Taylor and ensure they are fired. Create a civilian police review board with the power to discipline and even fire officers who engage in misconduct. We need to hold police officers accountable when they harm people instead of protecting them. It's the least we can do for the people of San Leandro and those SLPD officers that fulfill their oath with integrity.

— **Melisa Di Tano**  
San Leandro

### A Police Apprenticeship Program

Editor:

One option for the San Leandro City Council regarding police reform might be to set up an apprenticeship program like many European countries.

Apprenticeships are more common in Europe where over 50 percent of their kids under 22 are in apprenticeship programs, while here it is less than 5 percent. So in Europe it is not seen as being out of the ordinary to have apprenticeship programs for police occupations.

In Germany for example police have a two and a half year program; in the U.K. the program is three years.

The pay during the training, in the U.K. is the equivalent in U.S. dollars of \$22,000 for the first year, \$30,000 for the second and \$33,000 for the third year.

This may also translate into significant savings for the city while at the same time having a better trained police force, a real win/win. The private sector in this country are reluctant to invest in training and apprenticeship programs yet it is one factor in why we have much more inequality in our country than our European counterparts.

The private sector motto is "you train them, we'll hire them."

The police on the other hand are in the public sector where our city council can take a longer view and maybe learn from some of our European allies.

— **Craig Williams**  
San Leandro

### Better Diet, Better Chances

Editor:

It's an open secret to anybody that has lived in the states as a citizen knows that we aren't the most "healthy" of nations.

According to the U.S. Department of Health, 28% of Americans are physically inactive past the age of six or older, eat less than the recommended amount of produce and whole-grains necessary for a diet, consume 90% more sodium than is recommended and projects that by 2030, half of all adults will be categorized as obese.

America has a problem with stuffing its face and being obese can lead to heart failure, type 2 diabetes and even a worse symptom of coronavirus.

The Center for Disease and Prevention Control says that people with a Body Mass Index (BMI) of 30 or higher are more likely to contract the more severe symptoms of the virus. That is a scary thought when it comes to the elderly who are also obese.

The nation as a whole needs to cut back on high processed foods and sugar. You might say "easier said than done," to which I refute "easier done than dead." I'm fat too, but so far during this quarantine, I've lost around 25 lbs. and have never felt better. I did this by eating right, staying away from carbs (bread, pasta, sweets, etc.) and just by walking outside.

And now healthy food is very affordable. You can go to a bargain super market and get a box of protein bars for less than \$5, along with some grass-fed beef past market price.

There's no excuse for being morbidly obese. All I'm saying is by disciplining yourself and controlling your urges, you free your mind, body and spirit. Please call your local care physician today to get started.

— **Rami Morrar**  
San Leandro

### More 'Catastrophism'

Editor:

I haven't seen any City report of any death from coronavirus in San Leandro. Still, city officials continue with the scam.

They follow the guidance of Prophets of Doom Gavin Newsom and County Health Officer Erica Pan who ordered 30 feet "social distance." I'm certain that she has no idea what a 30 feet distance looks like. So, maybe the City Council will order the cops to stop and cite some senior citizen walking around without a mask while the vandals run loose on San Leandro streets.

This is the real Fake News catastrophism.

In five months, the state, county and city officials have not been able to figure out a plan to put the people back to work, within the existing conditions. They don't really care that there are a lot of people who don't get paid for staying home as they do. Their plan is not sustainable; then they're going to go to Trump to fund their political agenda.

Actually, the remote City Council meetings are working well for their agenda. They're proposing to give over a million dollars of taxpayers money to

politically correct organizations. Half of that will go to two organizations, Centro Legal de La Raza and La Clinica de La Raza. They know quite well that nobody will be hanging on the phone for three hours to contest their decision.

Meanwhile, the President of the United States is putting his face out there, courageously, in front of thousands of his supporters. Joe Biden???

— **Leo T. West**  
San Leandro

### Acting Like an Emperor

Editor:

Donald Trump wasn't officially briefed on the "bounty" situation. Trump's recent hand picked Chief of Staff Mark Meadows privately mentioned to Trump the Taliban paid bounty on US soldiers funded by the Russians — with a formal briefing hushed and dismissed.

Trump didn't want another Russian/Putin problem compromising his re-election bid. Should it gain momentum he would simply say he was not briefed on the matter — as White House Press Secretary Kayleigh McEnany was told to announce before the press.

The fact is Trump wants to know *everything* that pertains to him and his re-election. Why? Trump wants to control everything. Choosing to act like an Emperor who answers to no one — controlling everyone and everything — rather than a man Of The People, By The People, and For The People.

Trump's polling numbers — Approve & Disapprove — are continuing in the wrong direction. His myriad lies, tweets and misdirections are catching up with him. His older base, some dying of coronavirus, and Senate Republicans falling by the wayside gasping for air.

Trump continues to deny the serious nature of COVID-19 and its consequences. Summoning his base on the campaign trail as he rallies all, mask-free, with his rosy end of coronavirus and an economy stronger than ever. This of course is Trump's delusional wishful thinking he wants all to believe.

Trump's current grumbling is that voting by mail is a "fraud." A claim he may further exploit should he fall short of the required 270 electoral votes on November 3rd — calling the election illegal. Trump could then refuse to leave office, marshal the military and force a coup to remain in power. This form of depravity could only exist in The Mind of Donald Trump.

— **Dwight Pitcaithley**  
San Leandro

### On Fake News

Editor:

Spotting fake news

Is no surprise,

Such as: "Our President Never lies."

— **George Z. Banks**  
San Leandro



Send a Letter to the Editor  
[Letters@ebpublishing.com](mailto:Letters@ebpublishing.com)



## INQUIRING REPORTER

### Should the schools open?

— Asked downtown

That's a hard question. I would support schools opening with strict guidelines, masks and social distancing. Kids have a hard time focusing with online classes. I'm sure they are, because I have a hard time with my college classes online.

**Jennessa Ware**  
Hayward



I think so. I'm a teacher's aide in special education in Hayward. What are we to do? I'm willing to go back to work, and the kids need to go to school, too.

**Maria Ochoa**  
Castro Valley



Yes, I think schools should start. My granddaughters are in school. You can only do so much.

**Douglas Branan**  
San Leandro



No, because the coronavirus is very infectious. They should just have school on Zoom, online classes.

**G Costilla**  
San Leandro



No, because the numbers are going up and up. I just don't think it's safe.

**Louise Hustace**  
San Leandro





# School to Start in Fall With Distance Learning

By Michael Singer  
San Leandro Times

San Leandro students will return to school this year in the same way they left it back in June: at home behind a computer screen.

The San Leandro Unified School District Board of Education released its plan this week with an announcement that instruction for the 2020-21 school year will start as a distance learning model – students will work online at home while the teacher assigns work and checks in digitally.

There is no in-person interaction between teachers and students during distance learning. Instead, the instruction would include a combination of video conferencing, web-based activities, and potentially discussion boards in the older grades.

The school board said it took into consideration many factors in its decision including feedback from families and staff. The board

said the health and safety of the community was the priority, given the increase in Covid-19 infection rates and evaluating the district's capacity to ensure the safety of all students and staff.

"This announcement will be significantly disappointing to many members of the community who were preparing to welcome back students, even in smaller numbers," the board said in its letter to parents. "Since the initial closure on March 13, the district has been clear that schools would not reopen to in-person instruction until it was safe to do so. Given the current local conditions, it does not appear that point has been reached."

The threat of the coronavirus pandemic continues to limit most in-person and inside activities. Alameda County Health officials said Wednesday that the county is now under the watch of California's County Monitoring list. San Leandro has reported 429 cases of Covid-19 infections since March.

The school district says it learned a lot from the distance learning instruction over the spring and summer semesters. San Leandro schools will continue to use SeeSaw for younger students (transitional kindergarten or TK through Grade 5). Middle School and High School students will continue to use Schoology for their instruction. The district said it is introducing a new curriculum for science, history-social science, and world language to take advantage of distance learning models.

In its letter to parents, the board said its distance learning model is part of a Phase 1 approach. Schools have already begun to include safety and hygiene protocols to prepare for a return to in-person instruction as soon as local conditions allow, the board said in its letter. Staff is expected to continue to be trained in both safety protocols and distance learning instruction.

Teachers are scheduled to

return for training starting on Aug. 10. The board said it will also, "negotiate working impacts for in-person instruction with bargaining unit groups."

The board said it will also continue to support specialized

groups, including personnel to support at-home learning. Increased teletherapy services and at-home access to mental health services will continue. Parents will also have training and support made available for managing

distance learning. The district will also continue its current distribution of meals to children under the age of 18, and will provide updates on its website about the distribution of needed materials to start the school year.

## 'Encore Drive-In Nights' Kicks Off Concert Series

Encore Drive-In Nights is launching a national concert series this summer, with shows to air at drive-in and outdoor theaters across the United States.

The Alameda County Fairgrounds in Pleasanton has been chosen to be one of the venues to host the kick off show on July 25 featuring Blake Shelton, who will be joined by special guests Gwen Stefani and Trace Adkins.

These all-new performances are filmed exclusively for each one-night-only event, and include cinematic interviews and storytelling.

Tickets for the show are on sale now at [ticketmaster.com/encore-blakeshelton](https://www.ticketmaster.com/encore-blakeshelton). Unlike traditional concert tickets that are bought for individual admission, each ticket for the Encore Drive-In Nights will admit one passenger car, truck or SUV. Up to six people (as many as there are legal seat-belts) can enjoy these concerts for \$114.99. For more information visit [encorenights.com](https://encorenights.com).

Amid the COVID-19 pan-



Blake Shelton will headline the drive-in show on July 25.

demic, drive-in theaters have proven to be a safe, creative way to deliver fans world-class entertainment thanks to their ability to engage and delight large groups of people in open-air layouts.

Fans will experience the Encore Drive-In Nights from the safety of their personal cars and will adhere to CDC recommended guidelines as well as all state and local health mandates.

Staff will wear personal protective equipment and enforce at least six feet of space between cars. The series will also use contactless payment and ticketing systems and limit capacity in restrooms.

For more informatoon, visit [encorenights.com](https://encorenights.com). For more information and upcoming tour dates, please visit [BlakeShelton.com](https://www.BlakeShelton.com) and follow @BlakeShelton.

## Denies: City will not release names

continued from front page

grew up in San Leandro and was homeless, was shot at the Walmart on Hesperian Boulevard as he wielded a metal baseball bat and didn't put it down when police ordered him to do so. He was shot with a taser twice but continued toward the policeman before he was shot in the chest with a handgun.

Taylor's family and support-

ers have maintained that he was having a mental health crisis and he would not have harmed anybody, so the situation should have been handled without the use of lethal force.

Rallies protesting the shooting have been held and the Taylor family and supporters called for the release the names of the police involved in the shooting.

But the City of San Leandro

and the police department announced last week that they would not release the names of the police involved, saying that there have been threats made against them.

A state law, SB 1421, says that the names of police involved in shootings should be made public, but the law allows the officers names to be withheld if releasing the names poses a specific danger.

**TURN-AROUND RIDDLES**

1. Turn around a drink and get an insect.
2. Turn around clothes and get boasting.
3. Turn around charts and get luncheon meat.
4. Turn around openings and get exercised.
5. Turn around water grass and get an animal.

**TO SOLVE,** turn around the letters in the first word to get the second. Example: Rail-liar.

Answers: 1. Tang-gnat. 2. Garb-brag. 3. Maps-spam. 4. Maws-swam. 5. Reed-deer.

**Junior Whirl**  
by Charles Barry Townsend

**1. A** **2. A** **3. A** **4. H** **5. H** **6. H** **7. H**

Illustrated by David Coulson

**AH, HA! IT'S TIME TO FIND THE BIG WORDS!**

Using the definitions and anagrams below, you must find the seven eight-letter words that fit into the framework pictured on the left. The letters in the two anagram words, for each definition, must be unscrambled and used to form the word asked for.

- | DEFINITIONS                     | ANAGRAMS      |
|---------------------------------|---------------|
| 1. An artist's tool.            | (rubs + hair) |
| 2. Turn of century light.       | (gash + gilt) |
| 3. Also called checkers.        | (shut + drag) |
| 4. North American weapon.       | (mako + thaw) |
| 5. Hard to find in restaurants. | (hats + rays) |
| 6. A light dimmer.              | (tear + shot) |
| 7. Fits of laughter, crying.    | (yeah + stir) |

Answers: 1. Airbrush. 2. Gaslight. 3. Draughts. 4. Tomahawk. 5. Ashtrays. 6. Rheostat. 7. Hysteria.

### AN INTERESTING REBUS!

All right, students, you have two minutes to solve this puzzle.

STAND TAKE MINE TAKING.  
I U 2 MY

Answer: The professor is saying, "I understand you undertake to undermine my understanding."

**LET'S TAKE A WORD DRIVE!** Find the four five-letter words in the word square that match the definitions below.

1. A trip (DRIVE, in place).
2. Ran against others
3. A sweet decoration.
4. Where something takes place.
5. Dividing lines, or borders.

Answers: 1. Drive. 2. Raced. 3. Icing. 4. Venue. 5. Edges.

**1. D** **2. R** **3. I** **4. V** **5. E**