

GENERAL NOTE:

AS DRAWN THE FRAME WORK IS 1/16" SQUARE Balsa. THIS WILL PRODUCE A FAIRLY ROBUST MODEL FOR FUN FLYING. SMALLER CROSS SECTION STRIP WOOD CAN BE USED FOR THE FRAME WORK TO CREATE A LIGHTER MODEL THAT WILL PRODUCE BETTER DURATION. ALL CURVED AREAS ARE WET FORMED.

COLORING:

OVERALL COLOR IS OLIVE DRAB WITH LIGHT GRAY BOTTOM.

ORANGE YELLOW
LIGHT GRAY BELOW THIS LINE

WHITE STRIPE

MOTOR STICK

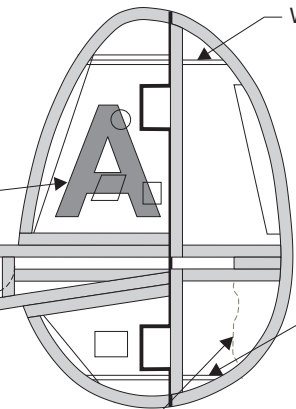
GREEN FORWARD OF THE WHITE STRIPE



BLUE SURROUND

ORANGE YELLOW

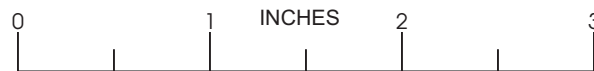
GREEN ABOVE THE WHITE STRIPE
WHITE STRIPE



WHITE STRIPE
GREEN BELOW THE WHITE STRIPE

LIGHT GRAY TO THE LEFT OF THIS LINE

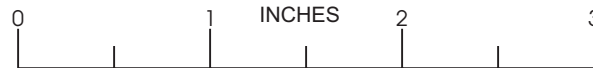
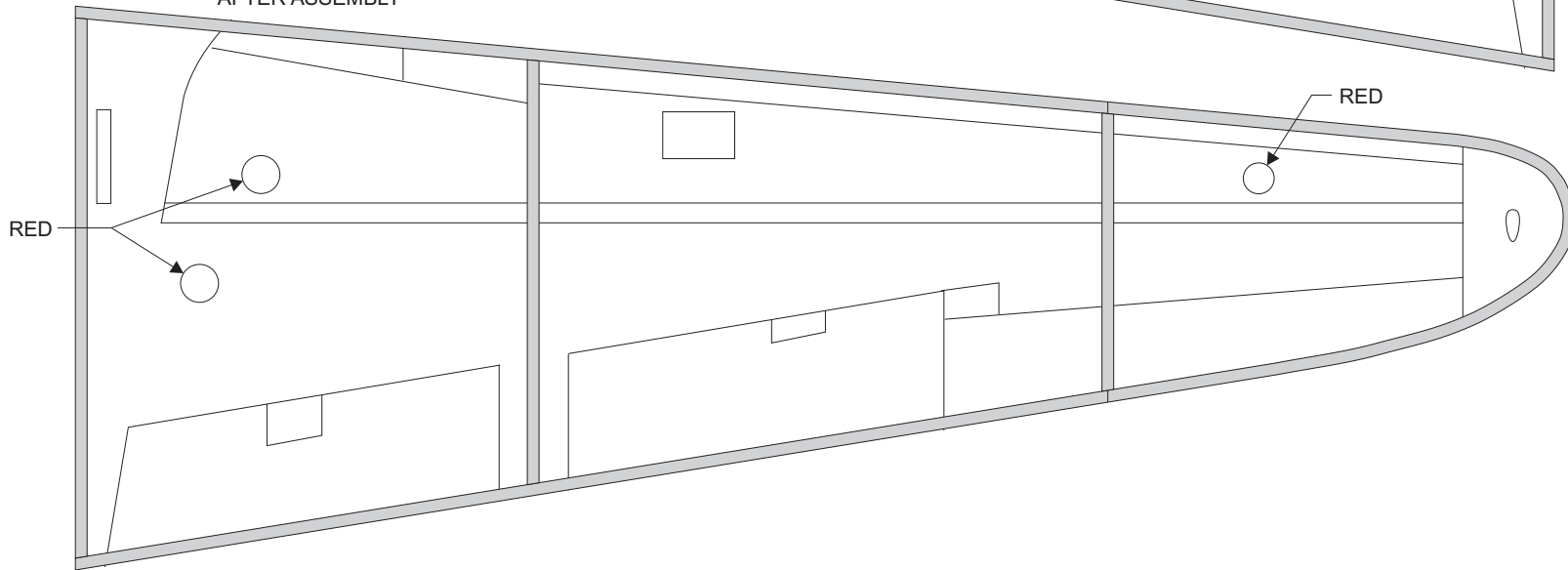
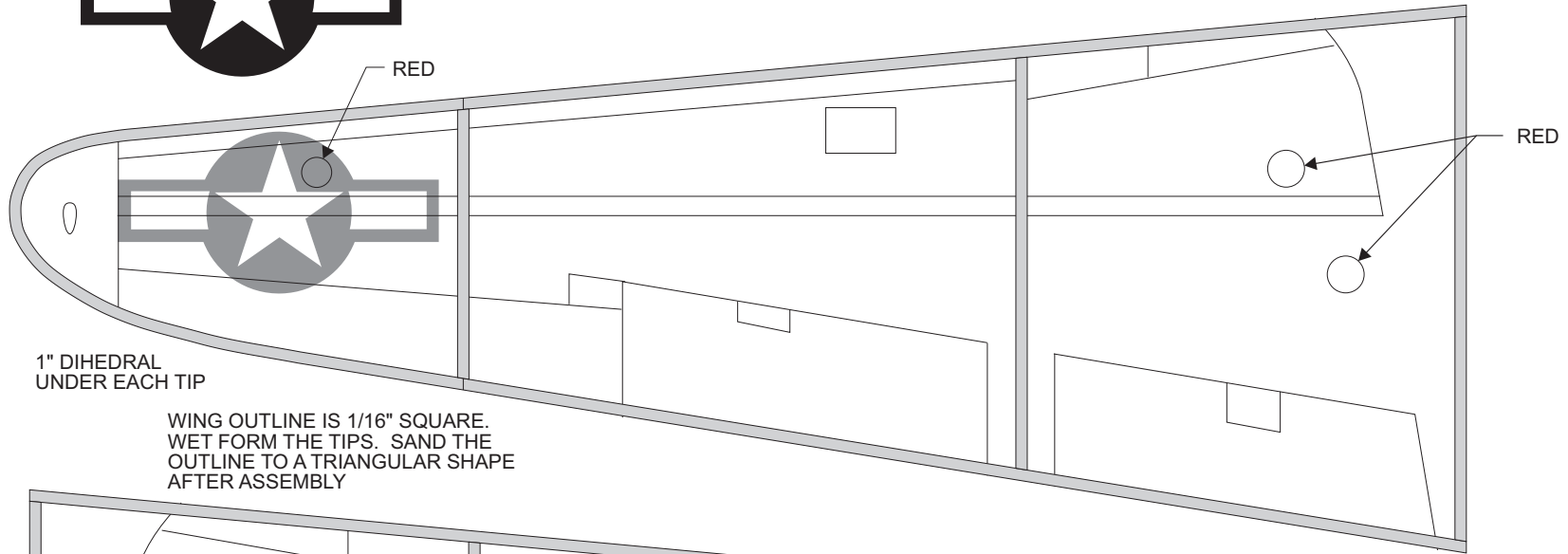
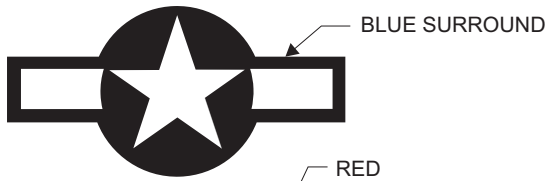
LIGHT GRAY BELOW THIS LINE



P-38

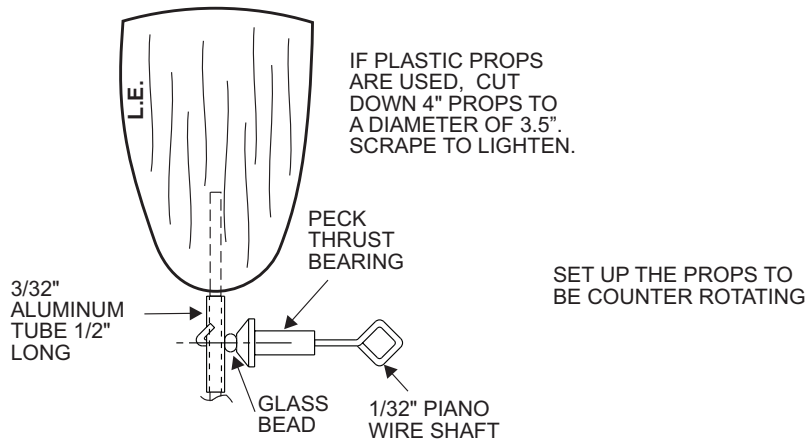
FAC NO-CAL SCALE
DESIGNED AND DRAWN BY
PAUL BRADLEY
11/2012

SHEET 1 OF 4 FROM INTERNET DOWNLOAD

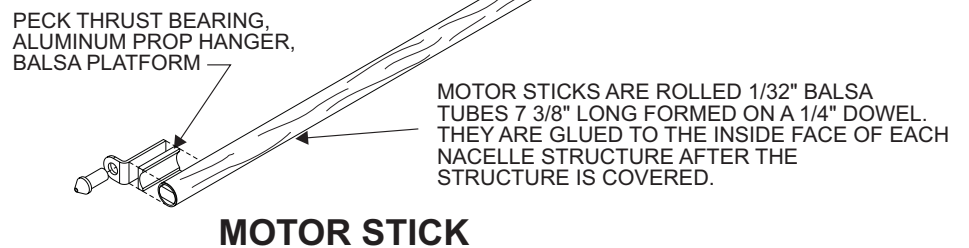
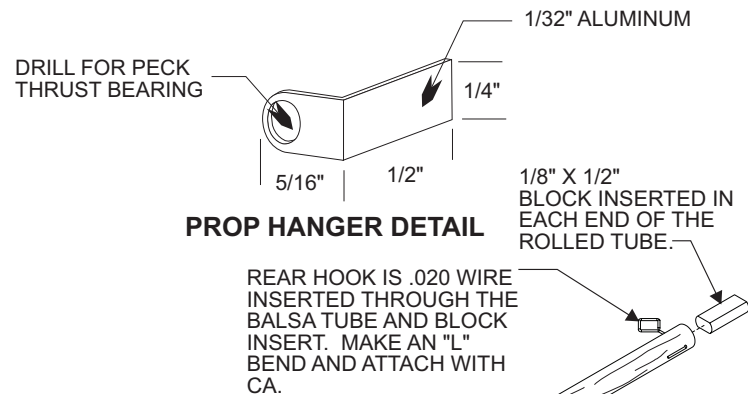


P-38

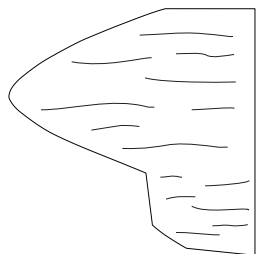
FAC NO-CAL SCALE
DESIGNED AND DRAWN BY
PAUL BRADLEY
11/2012
SHEET 2 OF 4 FROM INTERNET DOWNLOAD



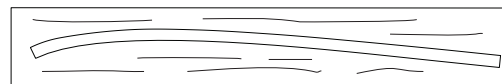
PROP BLADES ARE 1/32" SHEET FORMED ON A 3" CYLINDER. SET EACH BLADE WITH THE LEADING EDGE 15 DEGREES LEFT FROM VERTICAL ON THE CYLINDER. MAKE 2 IDENTICAL BLADES FOR THE PROP ASSEMBLY. PROP SPARS ARE MADE FROM BAMBOO ROUNDED TO 1/16" DIAMETER. A GOOD SOURCE FOR BAMBOO IS SHISH KABOB SKEWERS. GLUE THE SPARS INTO THE ALUMINUM TUBE. USE REGULAR MODEL AIRPLANE CEMENT FOR THIS SO PITCH ADJUSTMENTS CAN BE MADE BY SOFTENING THE GLUE WITH ACETONE.



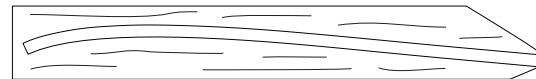
CUT WING RIBS FROM 1/16" SHEET. TRIM FROM THE TRAILING EDGE TO FIT INSIDE OUTLINE.



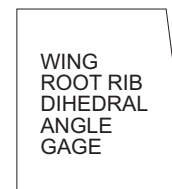
NACELLE NOSE
MAKE 2



NACELLE WING PLATE - MAKE 2



FUSELAGE WING PLATE



WING
ROOT RIB
DIHEDRAL
ANGLE
GAGE

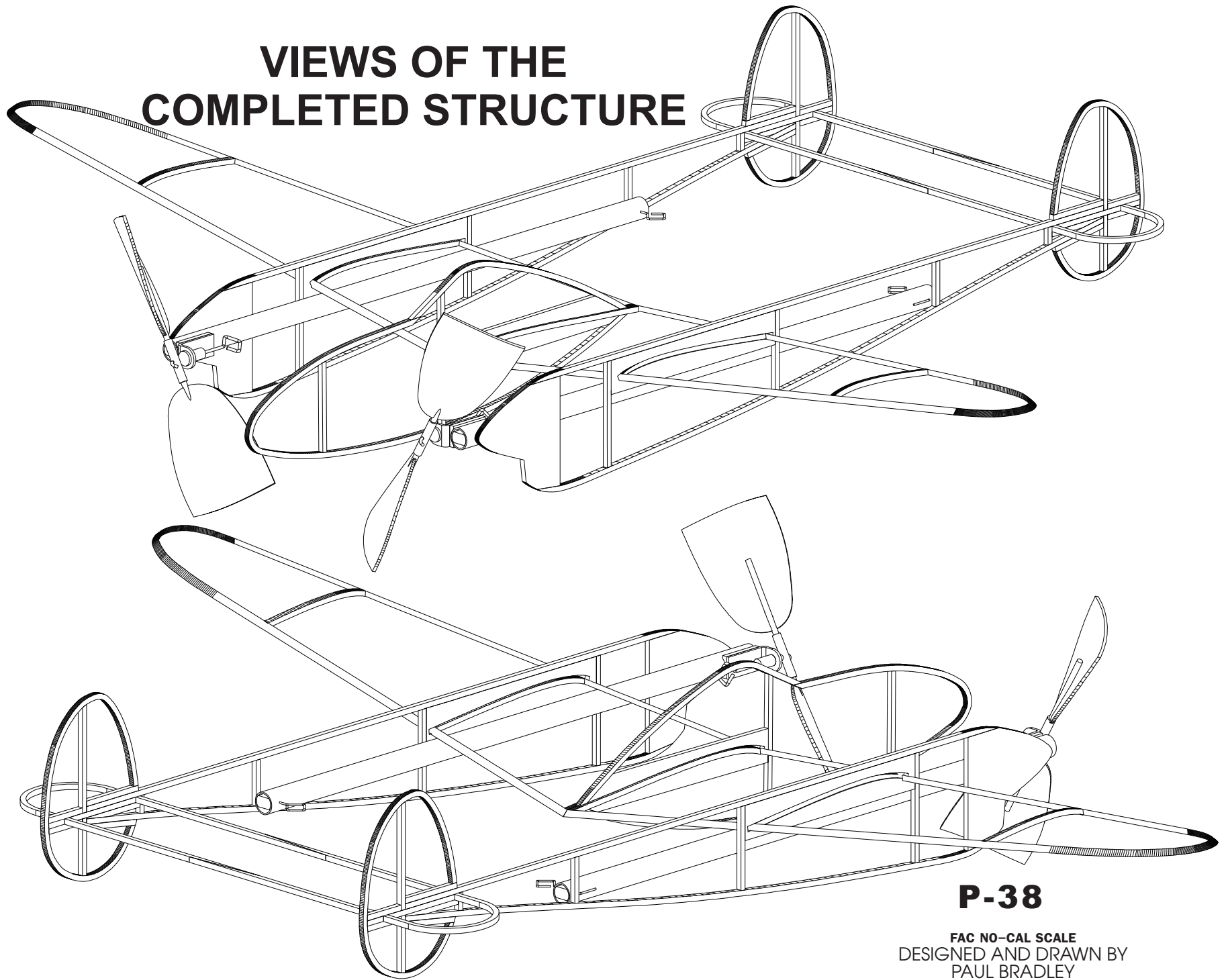


P-38

FAC NO-CAL SCALE
DESIGNED AND DRAWN BY
PAUL BRADLEY
11/2012

SHEET 3 OF 4 FROM INTERNET DOWNLOAD

VIEWS OF THE COMPLETED STRUCTURE



P-38

FAC NO-CAL SCALE
DESIGNED AND DRAWN BY
PAUL BRADLEY
11/2012
SHEET 4 OF 4 FROM INTERNET DOWNLOAD