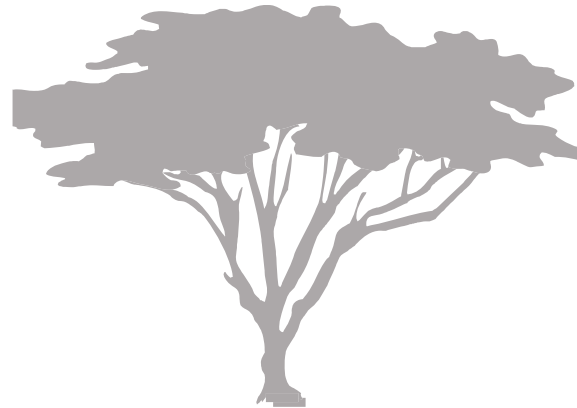


Pre-Marital Services

The process of making a lifelong commitment to someone else is both exciting and a little unnerving. Successful marriages are based on the promise of love and perseverance. To help with the decision making, Vista Psychological & Counseling Centre, offers three premarital counseling packages for those seeking input prior to their wedding nuptials. Guided by a licensed professional, our premarital services hope to provide the best assistance possible when making this most important decision.



Established in May 2008 by Julia Appleby, Dr. Bob Humphries and Sandy Lombardi, our experienced staff are committed to helping you achieve greater emotional wellness and adjustment by providing the very best in psychological and counseling services.

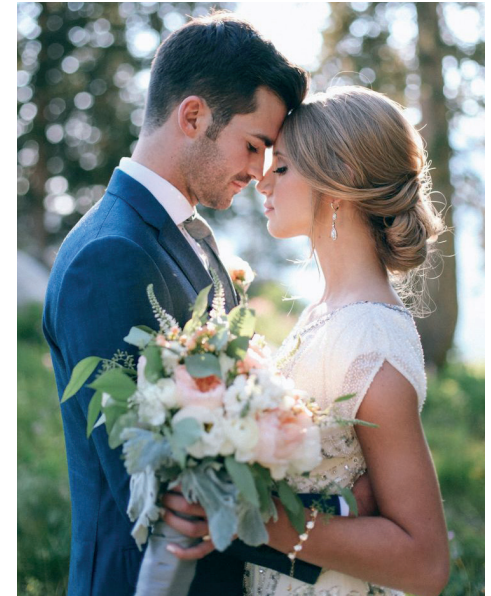
Vista Psychological &
Counseling Centre, LLC

1201 South Main Street Suite 100
North Canton, Ohio 44720

Phone: 330.244.8782

Fax: 330.244.8795

www.vistapcc.com



VISTA PSYCHOLOGICAL &
COUNSELING CENTRE, LLC

1201 South Main Street Suite 100
North Canton, Ohio 44720

Phone: 330.244.8782

Fax: 330.244.8795

vistapcc.com

Three Package Choices

Each package contains an initial consultation, formal assessment and follow-up visits. Choosing the right package will depend upon your needs and the level of services preferred. Testing identifies areas of compatibility and differences.

The formal assessment allows each person to better understand the other, as well as to gain better selfawareness. Such insight better prepares the couple to resolve issues and to build upon strengths. Our consultations are aimed at identifying potential trouble spots in a marriage and enhance couple communication in a confidential and therapeutic setting.



Package One

- **Joint Initial Consultation**
- **Premarital Assessment**
- **Follow-up Visit**

Package Two

- **Joint Initial Consultation**
- **Two Premarital Assessments**
- **Up to Three Follow-up Visits**

Package Three

- **Individual Initial Consultations**
- **Joint Meeting**
- **Three Premarital Assessments**
- **Up to Three Follow-up Visits**

**Special Packages for
Couples Considering
Remarriage**