



lado1 - pb6 - 3 choruses

Mas que nada

Jorge Benjor

♩ = 96

Gm⁷ C⁷ Cm⁷ F⁷ Gm⁷

The first staff of music is in bass clef, 2/4 time, and B-flat major. It contains five measures of music. The first measure has a half note G. The second measure has a half note C. The third measure has a half note B-flat. The fourth measure has a half note F. The fifth measure has a half note G. There are slurs over the first two measures and the last two measures.

C⁷ Gm⁷ C⁷ Gm⁷ C⁷

The second staff of music is in bass clef, 2/4 time, and B-flat major. It contains five measures of music. The first measure has a half note C. The second measure has a half note G. The third measure has a half note C. The fourth measure has a half note G. The fifth measure has a half note C. There are slurs over the first two measures and the last two measures.

Cm⁷ F⁷ Gm⁷ C⁷ Gm⁷

The third staff of music is in bass clef, 2/4 time, and B-flat major. It contains five measures of music. The first measure has a half note B-flat. The second measure has a half note F. The third measure has a half note G. The fourth measure has a half note C. The fifth measure has a half note G. There are slurs over the first two measures and the last two measures.

D⁷ Gm⁷ D⁷ Gm⁷ D⁷

The fourth staff of music is in bass clef, 2/4 time, and B-flat major. It contains five measures of music. The first measure has a half note D. The second measure has a half note G. The third measure has a half note D. The fourth measure has a half note G. The fifth measure has a half note D. There are slurs over the first two measures and the last two measures.

Gm⁷ D⁷ Gm⁷ C⁷ Cm⁷

The fifth staff of music is in bass clef, 2/4 time, and B-flat major. It contains five measures of music. The first measure has a half note G. The second measure has a half note D. The third measure has a half note G. The fourth measure has a half note C. The fifth measure has a half note B-flat. There are slurs over the first two measures and the last two measures.

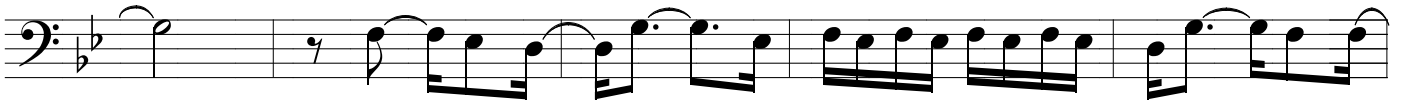
Book3 - Fita 3 - Repertório
Paulo Flores

www.brasilinstrumental.com

F⁷ Gm⁷ C⁷ Cm⁷ F⁷



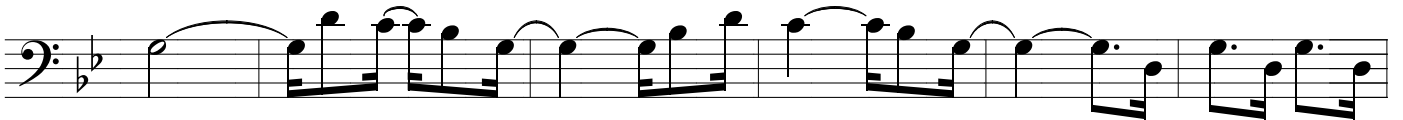
Gm⁷ D⁷ Gm⁷ D⁷ Gm⁷



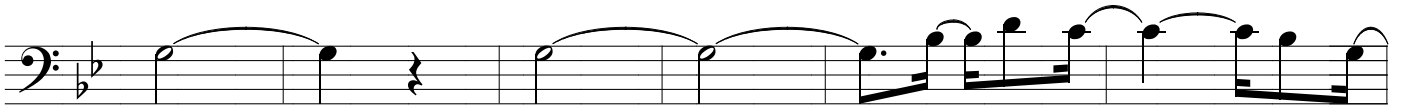
D⁷ Gm⁷ D⁷ Gm⁷ C⁷



Gm⁷ C⁷ Cm⁷ F⁷ Gm⁷ C⁷



Gm⁷ C⁷ Gm⁷ C⁷ Cm⁷ F⁷



Gm⁷ C⁷ Gm⁷ C⁷

