

Ciclo de 3M>>>

sentido horário
MIXOLÍDIO

semarmadura de clave

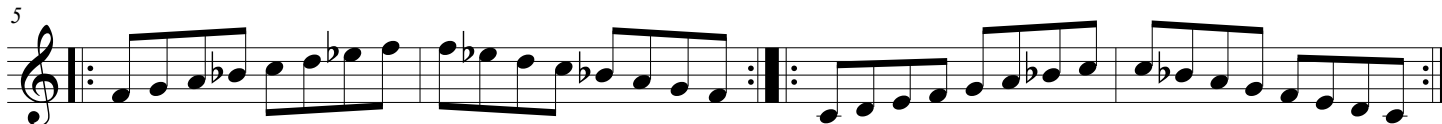
A7(9)(11)(13)

D \flat 7(9)(11)(13)



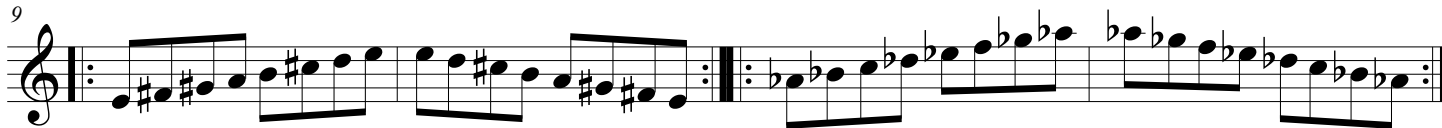
F7(9)(11)(13)

C7(9)(11)(13)



E7(9)(11)(13)

A \flat 7(9)(11)(13)



E \flat 7(9)(11)(13)

G7(9)(11)(13)



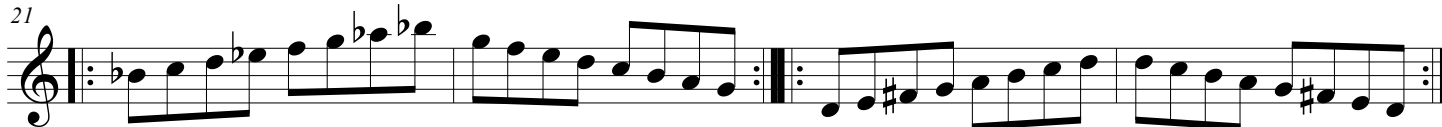
B7(9)(11)(13)

F \sharp 7(9)(11)(13)



B \flat 7(9)(11)(13)

D7(9)(11)(13)



<<<<Ciclo de 6m

sentido anti-horário