

Concert

Ciclo de 4as>>>

sentido horário
MIXOLÍDIO

sem armadura de clave

C7(9)(11)(13)

F7(9)(11)(13)



Bb7(9)(11)(13)

Eb7(9)(11)(13)



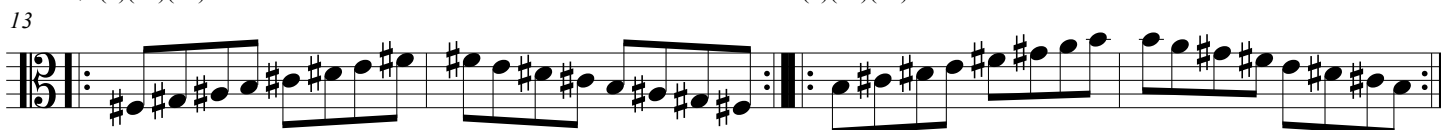
Ab7(9)(11)(13)

Db7(9)(11)(13)



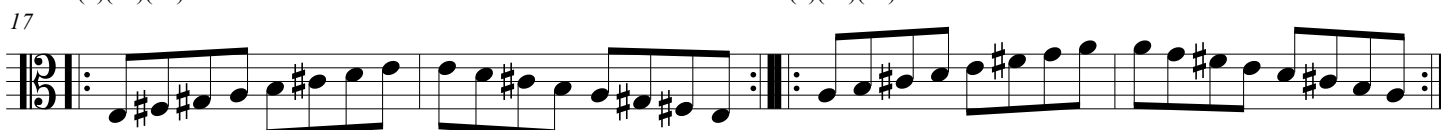
F#7(9)(11)(13)

B7(9)(11)(13)



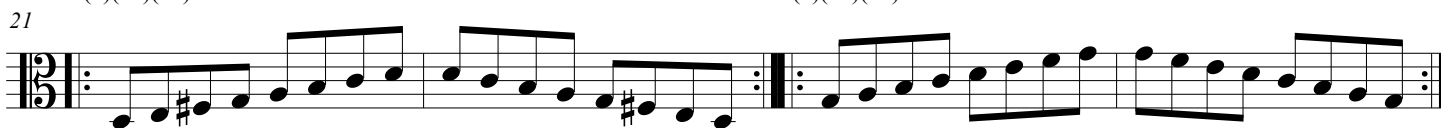
E7(9)(11)(13)

A7(9)(11)(13)



D7(9)(11)(13)

G7(9)(11)(13)



<<<<Ciclo das 5as

sentido anti-horário