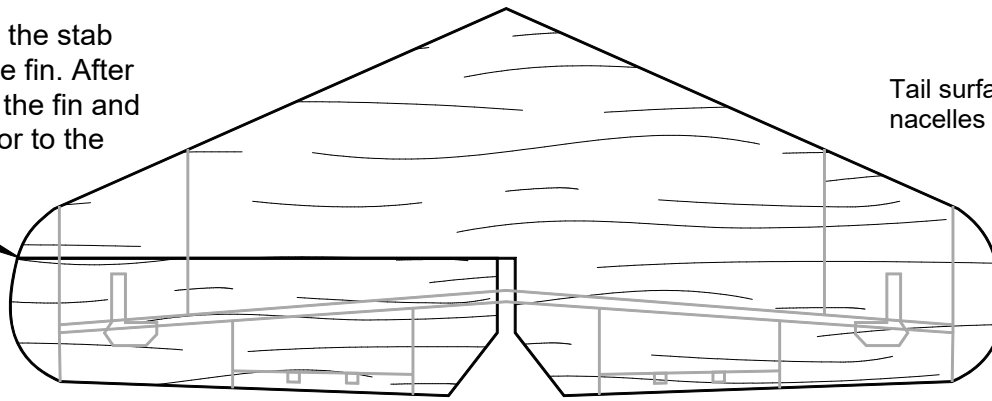
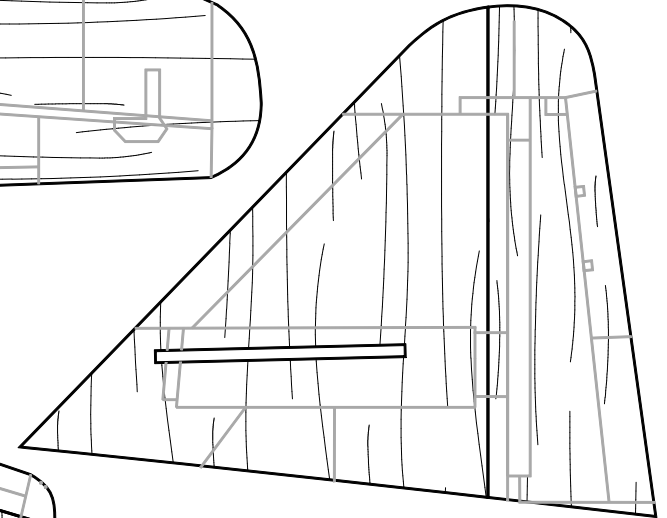


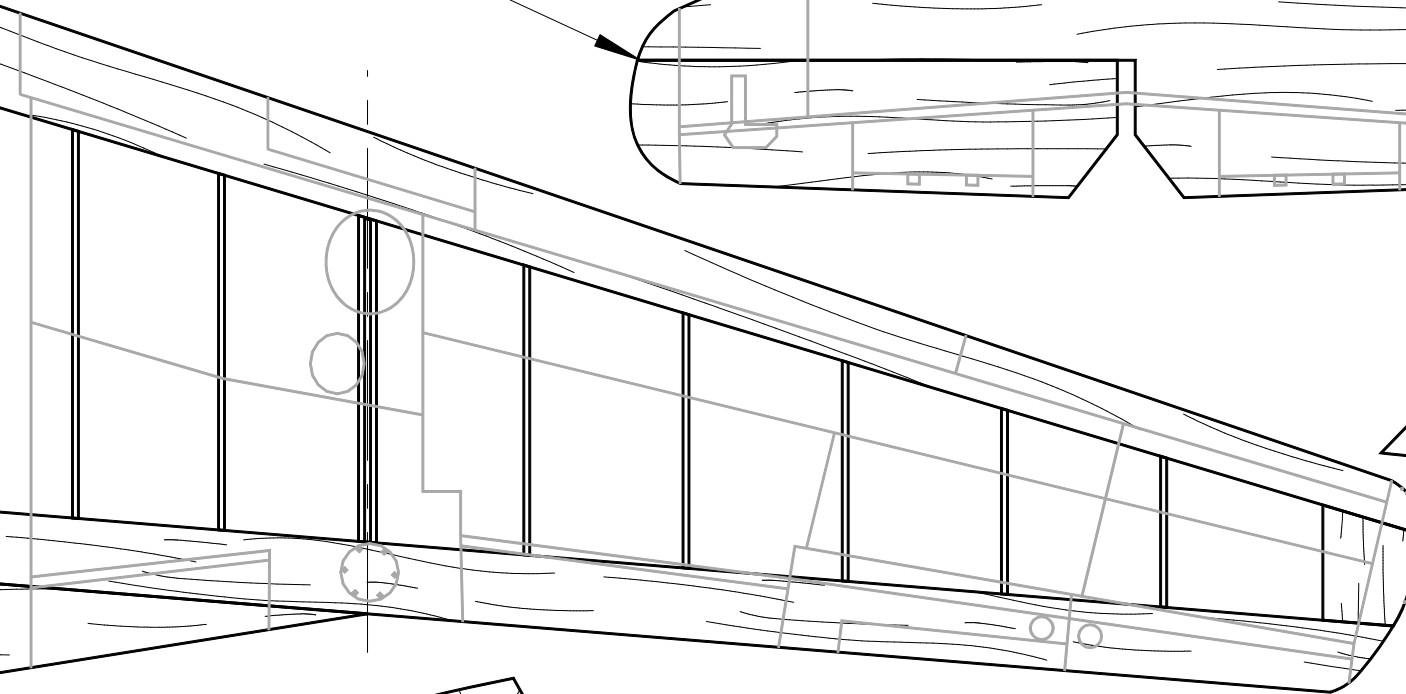
Cut one elevator from the stab to allow insertion in the fin. After the stab is inserted in the fin and glued, glue the elevator to the stab.



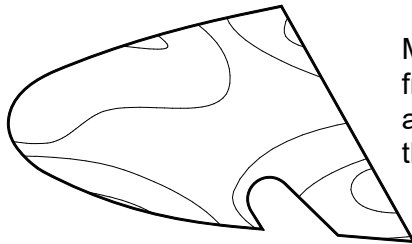
Tail surfaces and two engine nacelles are 1/16" balsa



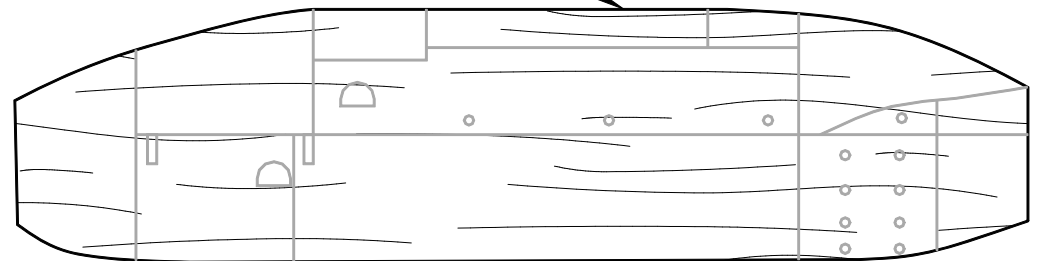
The stab is set with some negative incidence. Glue 1/16" square strips (Gurney flaps) to the bottom of the elevator trailing edges. This controls looping during the launch. Adjust the elevators by bending to achieve a good glide.



Make two nose doublers from 1/64" plywood. Glue a doubler to each side of the fuselage nose.



Glue engine nacelles to the bottom of the wide rib at the indicated locations after covering the wing.

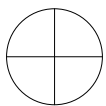


Front

Fuselage is made from two laminations of 1/16" balsa with a layer of Tyvek between the laminations



INCHES



<b>Me 262 Jet Cat</b>
<b>17" Wing Span</b>
<b>Designed by Paul Bradley</b>
<b>June 2018</b>