

B lado2 - pb2 - 3 choruses

As time goes by

Herman Kupfeld

$\text{♩} = 105$

Fm7 B \flat 7 B \flat m7 E \flat 7 Am7(b5) D7(b9) Gm7 C7(b9)



F7 Fm7 B \flat 7 E \flat 7M C7 Fm7 B \flat 7 E \flat m7 A \flat 7



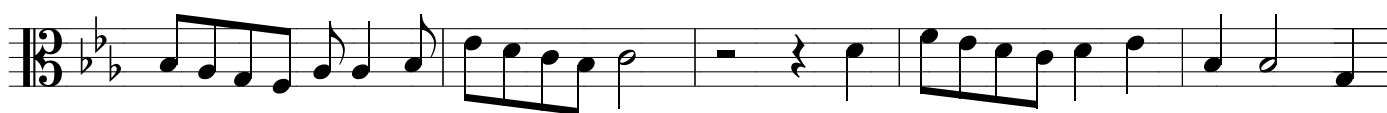
Dm7(b5) G7(b9) Cm7 C7 Fm7 Adim7



Cm7 A \flat 7 F7 B \flat 7 B \flat dim7 Fm7 B \flat 7



B \flat m7 E \flat 7 Am7(b5) D7(b9) Gm7 C7(b9) F7 E \flat 7M C7



Fm7 B \flat 7 E \flat 7M (C7)

