

Clera - y dathliad!



1996 - 2006

Cyngerdd dathlu pen blwydd Clera

Cymdeithas Offerynnau Traddodiadol Cymru/
celebrating the 10th anniversary of the
Society for the Traditional Instruments of Wales

10th Oed

GALERI, CAERNARFON

Nos Wener Tachwedd 24 2006 am 8.00 yh
Friday November 24 2006 at 8.00 pm

Gwesteion Arbennig/Special Guests

Meredydd Evans a Phyllis Kinney

Noddwyd y rhaglen hon gan

cwmni da



SPONSOR GYMRYDDOL
CYNGOR CŲLFFORDDAU CYMRU
THE ARTS COUNCIL OF WALES
SUPPORTING CREATIVITY

SET ROBIN HUW BOWEN

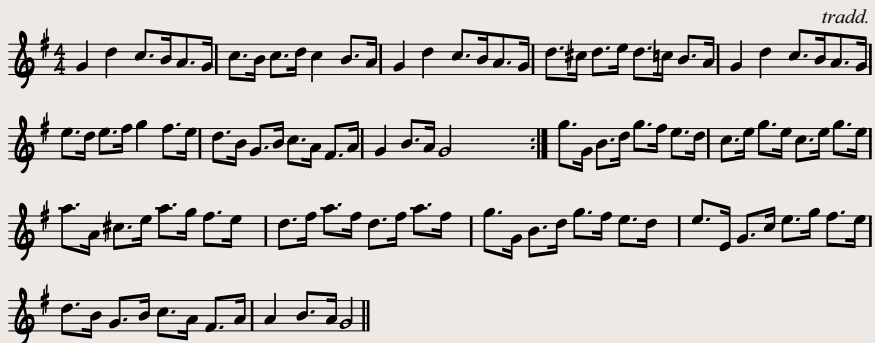
Glan Camlad



Llwyn Onn



Rhif Wyth



Hen bennill ...

Y gŵr a garo grwth a thelyn,
Sain cynganedd, cân ac englyn
A gân y pethau mwyaf tirion
Sy'n y nef ymhlith angylion.

SET HUW ROBERTS

Cainc y Medelwr

tradd.

Y Pawl Haf

tradd.

Ffidi Ffadl

tradd.

Cainc Ieuan y Telynor Dall

tradd.

SET JEFF HUGHES

Y Pibydd Du (Hyd y Frwynen)

tradd.

Y Lili

tradd.

Musical score for 'Y Lili' in G major, 2/4 time. It consists of three staves of music. The first staff begins with a treble clef, a key signature of one sharp (F#), and a common time signature. The melody is composed of eighth and quarter notes. The second and third staves continue the melody and include repeat signs at the end.

Breuddwyd Dafydd Rhys

tradd.

Musical score for 'Breuddwyd Dafydd Rhys' in G major, 3/4 time. It consists of three staves of music. The first staff begins with a treble clef, a key signature of one sharp (F#), and a 3/4 time signature. The melody features dotted rhythms and eighth notes. The second and third staves continue the melody and include repeat signs at the end.

Melin Llynonn

Huw Roberts

Musical score for 'Melin Llynonn' in G major, 6/8 time. It consists of three staves of music. The first staff begins with a treble clef, a key signature of one sharp (F#), and a 6/8 time signature. The melody is characterized by eighth and sixteenth notes. The second and third staves continue the melody and include repeat signs at the end.

Mabsant

tradd.

Musical score for 'Mabsant' in G major, 2/4 time. It consists of three staves of music. The first staff begins with a treble clef, a key signature of one sharp (F#), and a common time signature. The melody is composed of eighth and quarter notes. The second and third staves continue the melody and include repeat signs at the end.

Jigolo

Iolo Jones

Musical score for 'Jigolo' in G major, 2/4 time. It consists of three staves of music. The first staff begins with a treble clef, a key signature of two sharps (F# and C#), and a common time signature. The melody is composed of eighth and quarter notes. The second and third staves continue the melody and include repeat signs at the end.

SET STEPHEN REES

Waltz ar Drensiwr

Stephen Rees

Musical score for 'Waltz ar Drensiwr' in 3/4 time, key of G major. The score consists of three staves. The first staff is the melody, starting with a treble clef and a key signature of one sharp (F#). The second staff is the accompaniment, also in treble clef. The piece features a first ending (1.) and a second ending (2.) leading to a repeat sign. The final measure of the second ending is a double bar line with repeat dots.

Yr Hwch yn yr Haidd

Musical score for 'Yr Hwch yn yr Haidd' in 2/4 time, key of G major. The score consists of two staves. The first staff is the melody, starting with a treble clef and a key signature of one sharp (F#). The second staff is the accompaniment, also in treble clef. The piece features a first ending (1.) and a second ending (2.) leading to a repeat sign. The final measure of the second ending is a double bar line with repeat dots. The word 'tradd.' is written above the final measure of the first staff.

Gig ar Drensiwr

Musical score for 'Gig ar Drensiwr' in 3/8 time, key of G major. The score consists of two staves. The first staff is the melody, starting with a treble clef and a key signature of one sharp (F#). The second staff is the accompaniment, also in treble clef. The piece ends with a double bar line and repeat dots. The word 'tradd.' is written above the final measure of the first staff.

Dic Sion Dafydd

Musical score for 'Dic Sion Dafydd' in 2/4 time, key of G major. The score consists of two staves. The first staff is the melody, starting with a treble clef and a key signature of one sharp (F#). The second staff is the accompaniment, also in treble clef. The piece ends with a double bar line and repeat dots. The word 'tradd.' is written above the final measure of the first staff.

Dopsi Môn

Musical score for 'Dopsi Môn' in 6/8 time, key of G major. The score consists of three staves. The first staff is the melody, starting with a treble clef and a key signature of one sharp (F#). The second and third staves are the accompaniment, also in treble clef. The piece ends with a double bar line and repeat dots. The word 'tradd.' is written above the final measure of the first staff, and 'trefn. Stephen Rees' is written below it.

Y Dydd Cyntaf o Awst

Musical score for 'Y Dydd Cyntaf o Awst' in 4/4 time, key of G major. The score consists of three staves. The first staff is the melody, starting with a treble clef and a key signature of one sharp (F#). The second and third staves are the accompaniment, also in treble clef. The piece ends with a double bar line and repeat dots. The word 'tradd.' is written above the final measure of the first staff.