

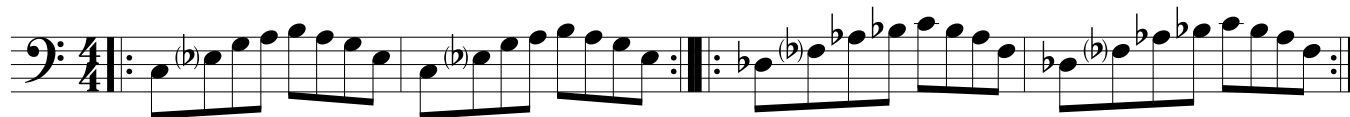
# Ciclo cromático>>>

sentido horário  
MENOR MELÓDICA

sem armadura de clave  
(maior com a 3a menor)

Cm7M(13)

D $\flat$ m7M(13)



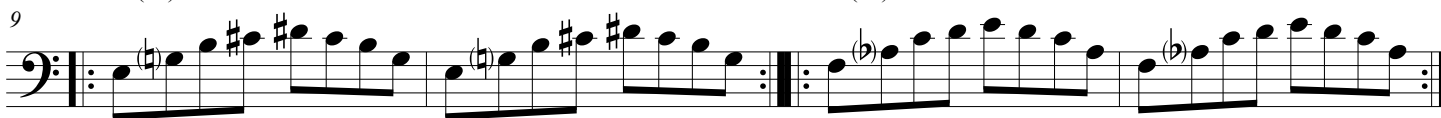
Dm7M(13)

E $\flat$ m7M(13)



Em7M(13)

Fm7M(13)



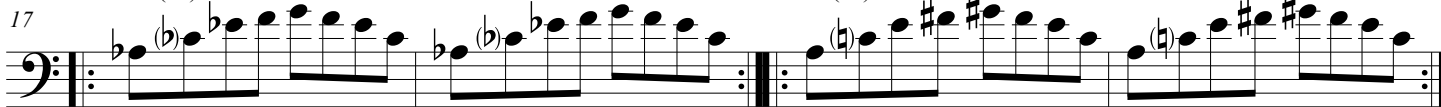
F $\sharp$ m7M(13)

Gm7M(13)



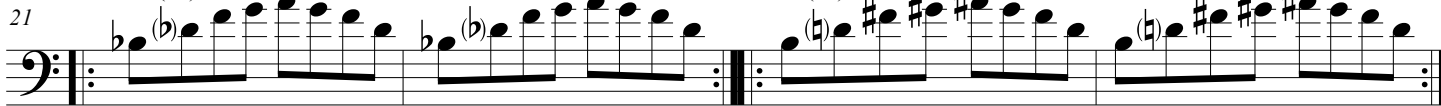
A $\flat$ m7M(13)

Am7M(13)



B $\flat$ m7M(13)

Bm7M(13)



# <<<Ciclo das 7M

sentido anti-horário