

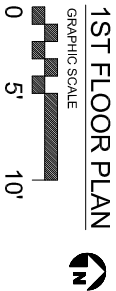
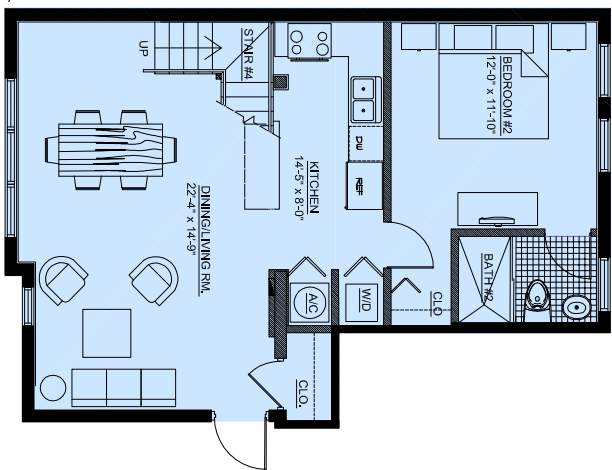
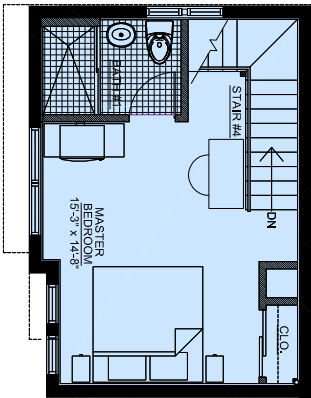
UNIT #2

2 BR / 2 BATH

TWO LEVELS
969 GSF

FEATURES:

- LOFT MASTER BEDROOM
- ARCHITECTURAL STAIR
- OAK AND CORK FLOORS
- IMPACT WINDOWS & DOORS
- FULL MARBLE BATHROOMS
- STAINLESS STEEL APPLIANCES
- MAPLE KITCHEN CABINETS
- GRANITE COUNTERTOPS
- WASHER/DRYER
- FRENCH GLASS DOORS
- PARKING SPACE



SHEET #	SHEET TITLE:
A-6	UNIT #2
OF TOTAL	DATE:
ARCH. CO. #	1/1/09
05119	

ALL DIMENSIONS SHOWN ARE APPROXIMATE. FEATURES SUBJECT TO CHANGE. ORAL REPRESENTATIONS CANNOT BE RELIED UPON AS CORRECTLY STATING REPRESENTATIONS OF THE DEVELOPER. FOR CORRECT REPRESENTATIONS, MAKE REFERENCE TO THIS BROCHURE AND TO THE DOCUMENTS REQUIRED BY SECTION 718.503, FLORIDA STATUTES, TO BE FURNISHED BY A DEVELOPER TO A BUYER OR LESSEE.

COPYRIGHT © 2008, Giller & Giller, Inc. ALL RIGHTS RESERVED

The Five
843 MERIDIAN LLC - DEVELOPERS
843 MERIDIAN AVENUE MIAMI BEACH, FLORIDA

Giller & Giller, Inc.

The Giller Building 843 Meridian Avenue, Suite 2000 Miami Beach, Florida 33139
Tel: 305-696-0000 Fax: 305-696-0001
www.gillerandgiller.com
Reg. SA 000964

ARCHITECTS INTERIOR DESIGNERS CONSTRUCTION MANAGERS