

Excellence in engineering
for exceptional projects



About us.

We are a company specializing in transforming stainless steel, providing innovative products, and constructing projects for the pharmaceutical, cosmetic, food, and beverage industries.

We offer specialized engineering solutions for turnkey projects, manufacturing, and integrating equipment for special applications in closed systems for powders and liquids. We are experts in sanitary finishes and electropolishing, executing all our projects with the best documentation practices.

Our values



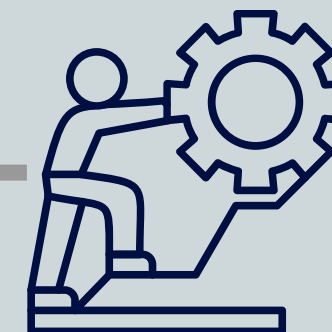
COMMITMENT



EXCELLENCE



QUALITY



DO THE BEST

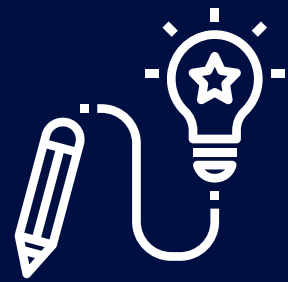


PROJECTS

OUR EXPERIENCE



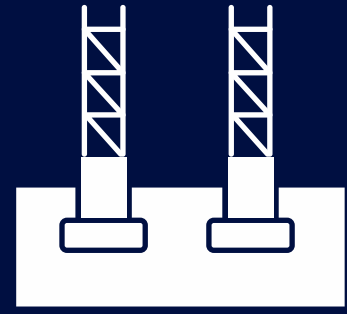
PLANNING



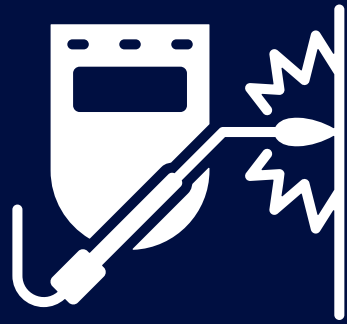
DESIGN



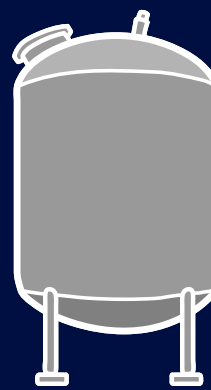
CONSTRUCTION



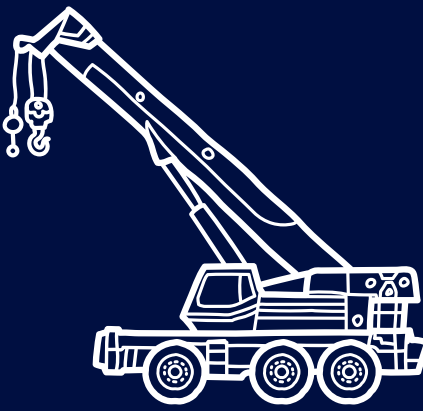
STRUCTURES



MANUFACTURE



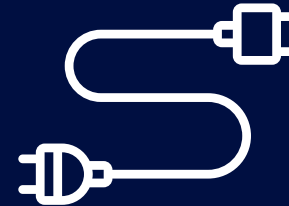
PIPING, TANKS
AND SANITARY EQUIPMENT



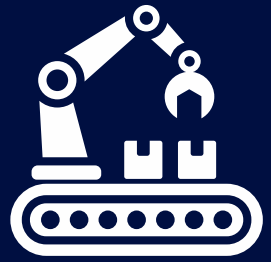
CRANE OPERATIONS



INSTALLATION



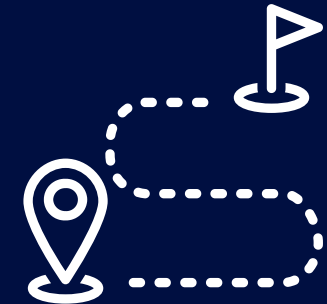
ELECTRICAL PANELS AND
ELECTRICAL INSTALLATIONS



AUTOMATION



COMMISSIONING



SUPPORT



PROJECTS



ENGINEERING SOLUTIONS PLANNING AND DESIGN

PLANNING AND DESIGN

Project Manager

Start

P&ID_FAMESA_21747_REV2 (Copia)*

Drawing1*

Home

Isos

Structure

Analysis

Modeling

Visualize

Insert

Annotate

Manage

Output

Add-ins

Collaborate

Vault

Express Tools

Featured Apps

Layout

Project Manager

Data Manager

Route Pipe

Unassigned

4"

CS300

Line to Pipe

PCF to Pipe

Create Ortho View

Ortho Views

Compass

Elevation

COP

Elevation & Routing

Rise

Run

Slope

Pipe Supports

Equipment

Visibility

View

2D Wireframe

Unsaved View

Layers

Command:

Command:

Command: *Cancel*

PROJECTS

RETORNO CIP
LECHE DE CABRA

CV 1

LECHE CABRA

2"-ASTM A270 AISI316L 32RA-LECHE DE CABRA-LC
IS - 1.5"

RETORNO CIP
LECHE DE VACA

CV 99

MC6-CV-99

Control Valve

Valves

Fittings

Instruments

Non-engineer...

P&ID



PLANNING AND DESIGN

Autodesk AutoCAD Plant 3D 2025 21747_ELECT_V001_CCM ARRANCADORES.dwg

Home | Isos | Structure | Analysis | Modeling | Visualize | Insert | Annotate | Manage | Output | Add-ins | Collaborate | Vault | Express Tools | Featured Apps

Project Manager | Data Manager | Route Pipe | 4" | CS300 | Line to Pipe | PCF to Pipe | Create Ortho View | 45° | 45° | Elevation | COP | Rise | Run | Slope | Create | Create | Show All | 2D Wireframe | Unsaved View | Layers

Start / Drawing1* 21747_ELECT_V001_CCM ARRANCADORES*

[Top][2D Wireframe]

Project Manager

Diagram showing electrical equipment and piping layout. Equipment includes: XA1, XA2, XA3, F1, F2, F3, XL, XN, XPE, Q1, Q2, Q3, Q4, Q5, Q6, Q7, Q8, Q9, Q10, Q11, Q12, Q13, Q14, F5, F6, X24VDC, X24M, XPE, K1, X1K6, X6, XH1, XH2, XH3, XH4, KF1, KF2, KF3, KF4, KF5, KF6, KF7, KF8, KM1, KM2, KM3, KM4, KM5, KM6, N1, N2, N3, N4, N5, XS1, XS2, XS3, XS4, XS5, A1.

Canaleta 80X80

Dimensions: 154 mm, 166 mm, 141 mm, 250 mm, 125 mm, 110 mm.

TOOL PALETTES - P&ID ISA

Control Valve

Valves

Equipment

Fittings

Non-engine...

Autodesk DWG. This file is a TrustedDWG last saved by an Autodesk application or Autodesk licensed application.

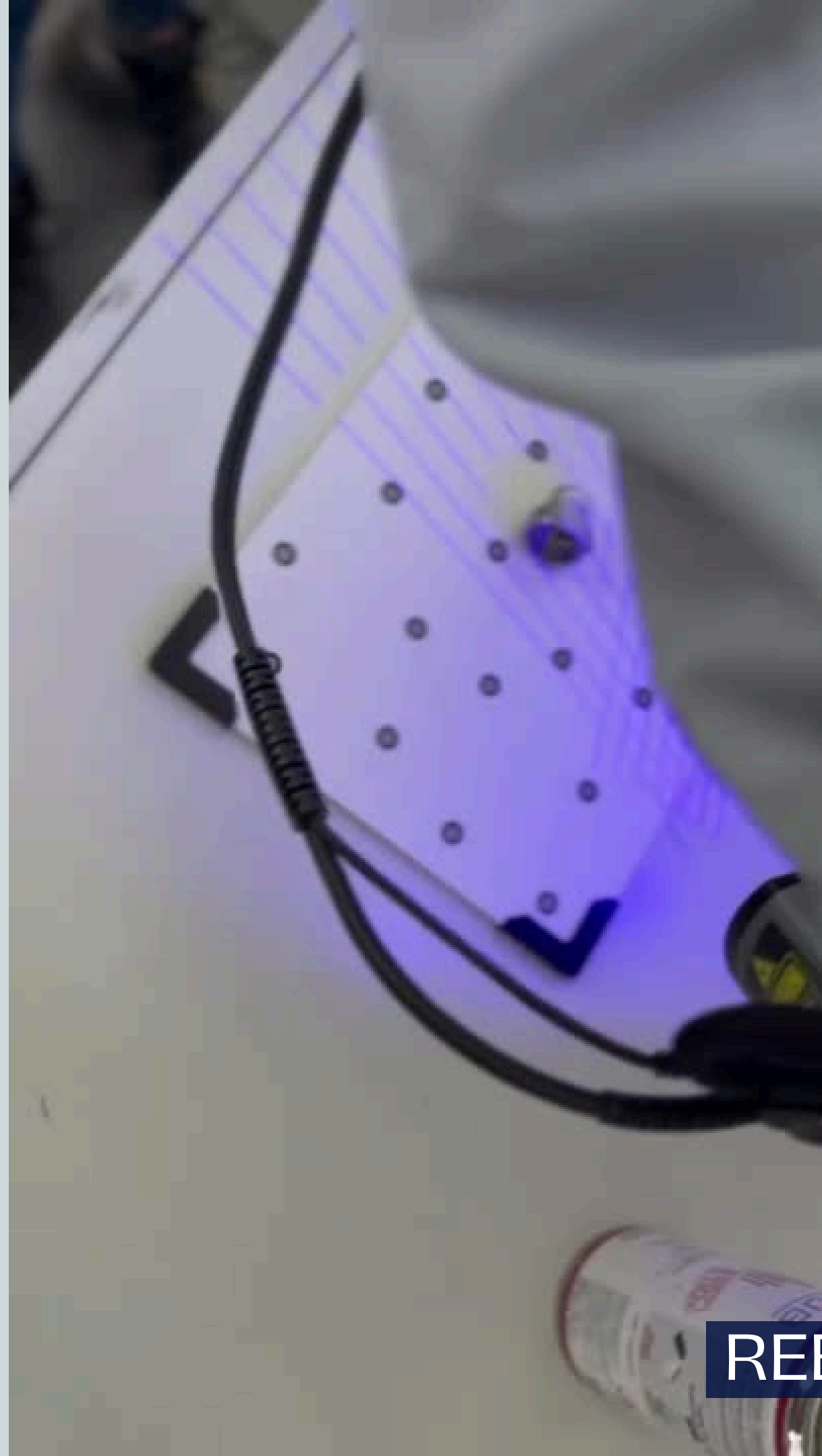
PROJECTS

Type a command

MODEL | 1:1

ELECTRICAL DIAGRAMS

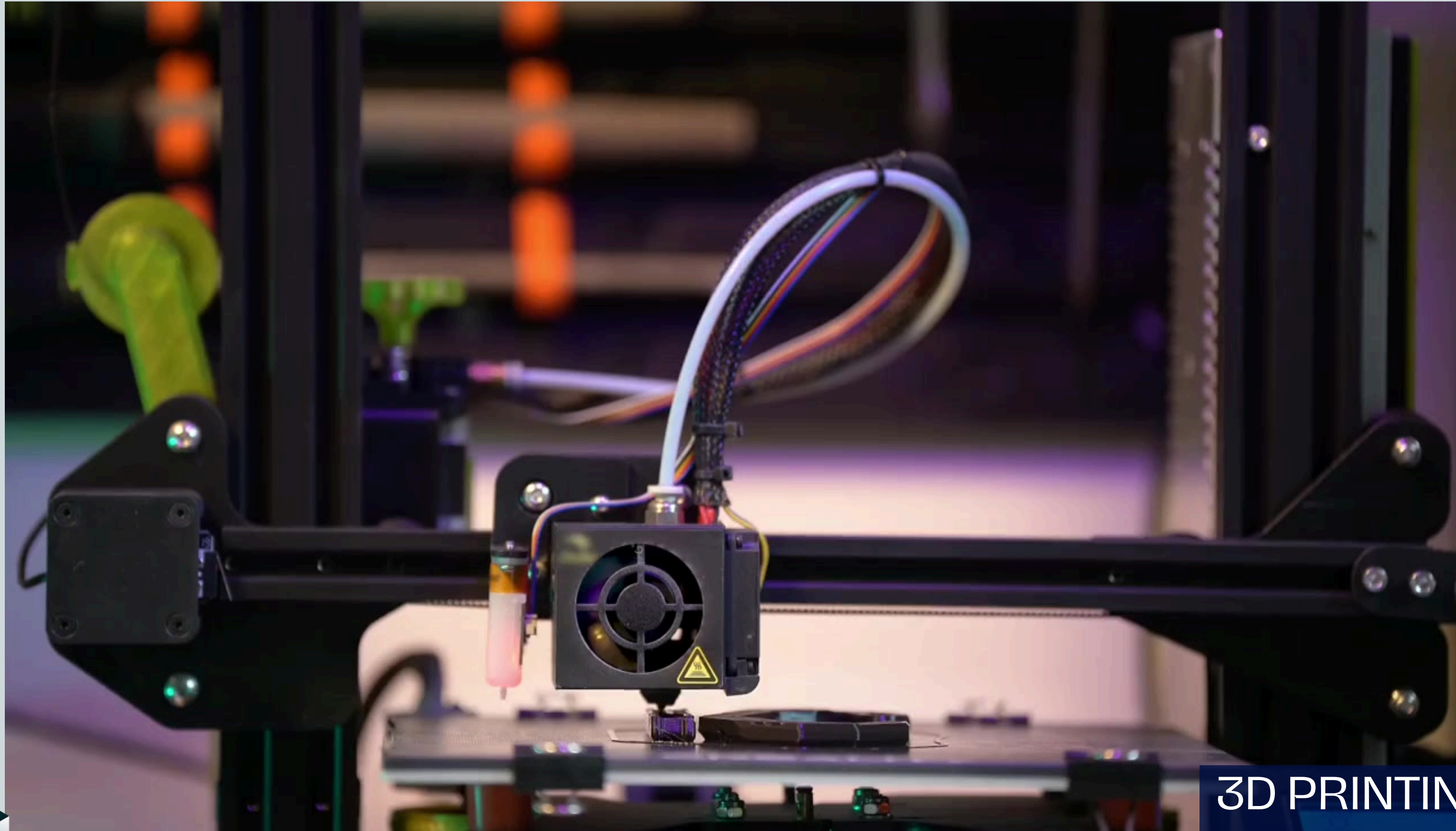
ENGINEERING SOLUTIONS



TECHNOLOGYTEEL.COM

REENGINEERING

PLANNING AND DESIGN

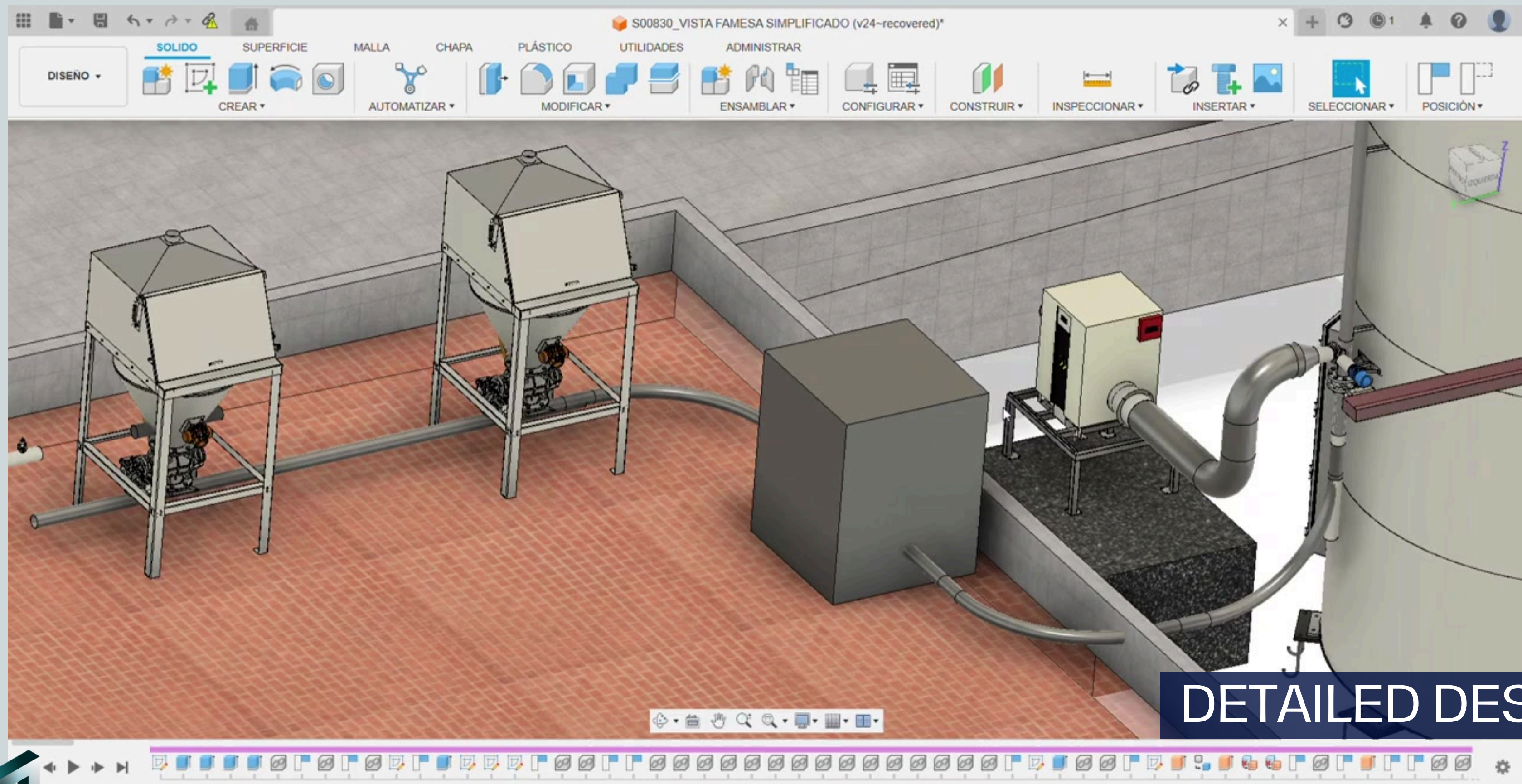


3D PRINTING AND
PROTOTYPES



PROJECTS

PLANNING AND DESIGN



DETAILED DESING



PROJECTS

ENGINEERING SOLUTIONS CONSTRUCTION AND STRUCTURES



CONSTRUCTION AND STRUCTURES



FOUNDATION



PROJECTS

CONSTRUCTION AND STRUCTURES

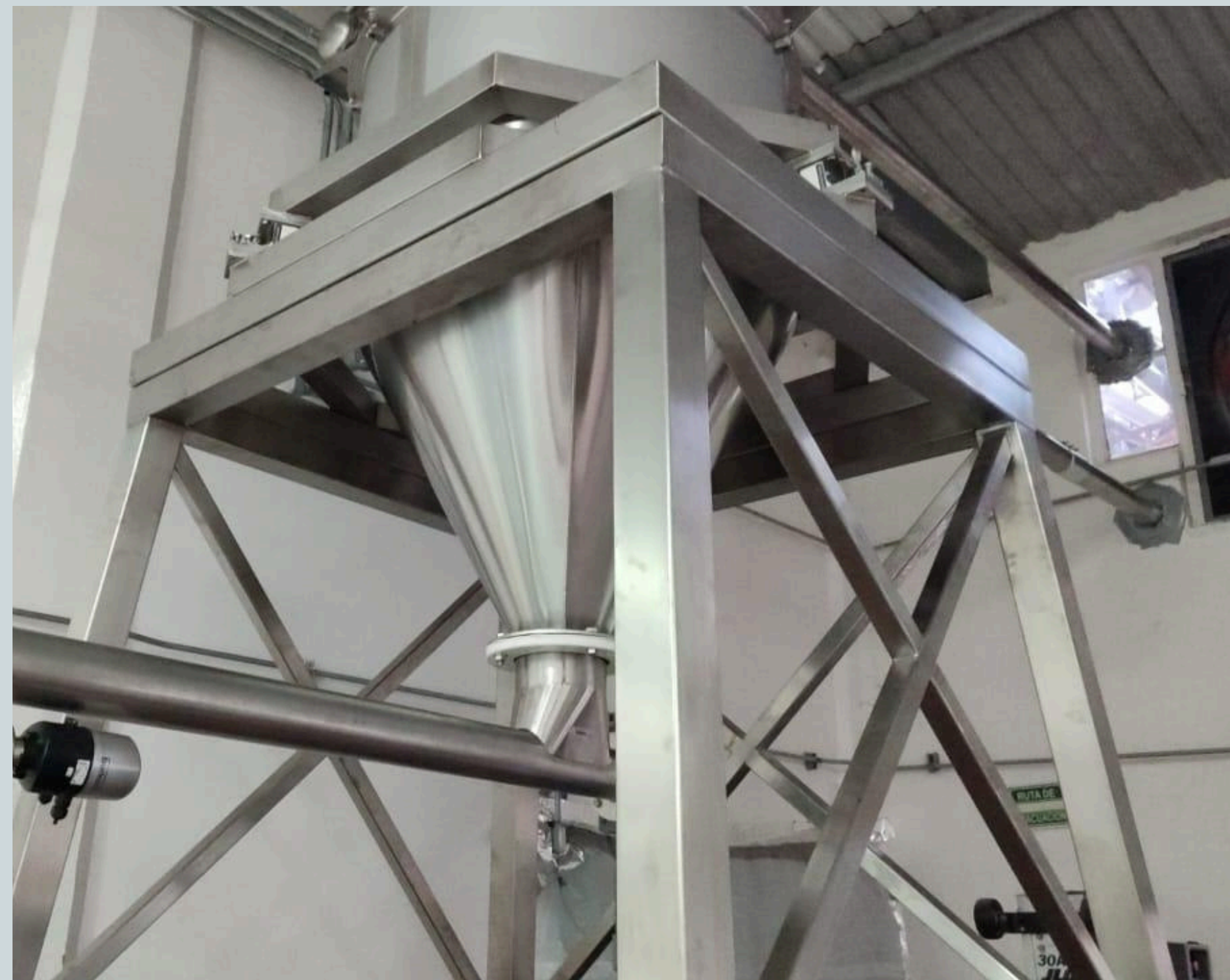


FOUNDATION

CONSTRUCTION AND STRUCTURES



CONSTRUCTION AND STRUCTURES



ENGINEERING SOLUTIONS MANUFACTURING AND SANITARY EQUIPMENT



PROJECTS

MANUFACTURING AND SANITARY EQUIPMENT



MANUFACTURING AND SANITARY EQUIPMENT



MANUFACTURING AND SANITARY EQUIPMENT



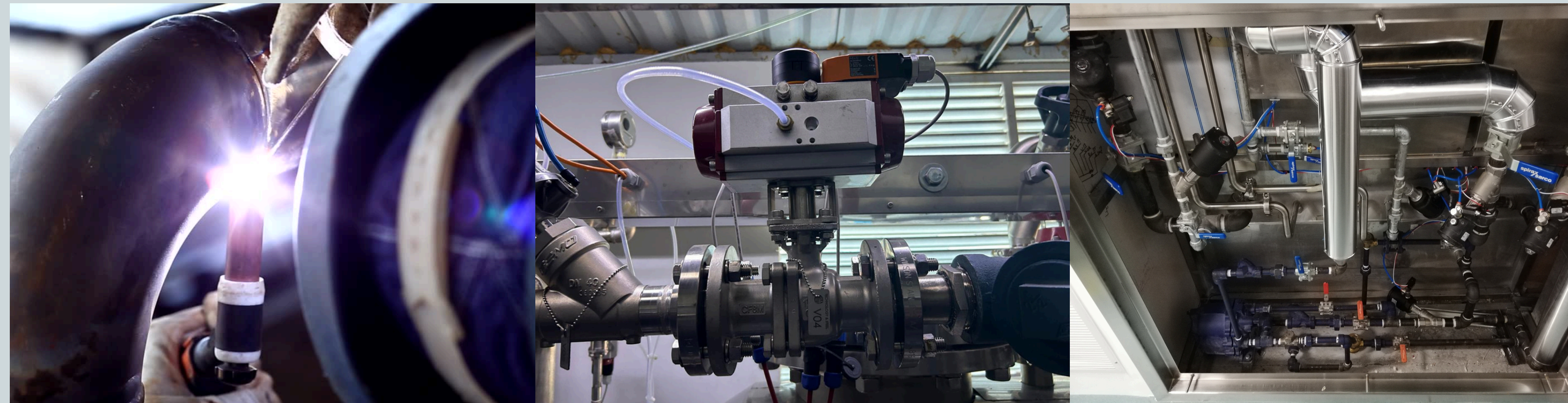
MANUFACTURING AND SANITARY EQUIPMENT



MANUFACTURING AND SANITARY EQUIPMENT



MANUFACTURA AND SANITARY EQUIPEMENT



MANUFACTURA AND SANITARY EQUIPEMENT



INDUSTRIAL STEAM



PROJECTS

MANUFACTURING AND SANITARY EQUIPMENT



MANUFACTURING AND SANITARY EQUIPMENT



FINAL MANUFACTURING TANKS



MANUFACTURING AND SANITARY EQUIPMENT



SANITARY TANKS



PROJECTS

MANUFACTURING AND SANITARY EQUIPMENT



SANITARY TANKS

MANUFACTURING AND SANITARY EQUIPMENT



SANITARY TANKS

MANUFACTURING AND SANITARY EQUIPMENT



SANITARY TANKS



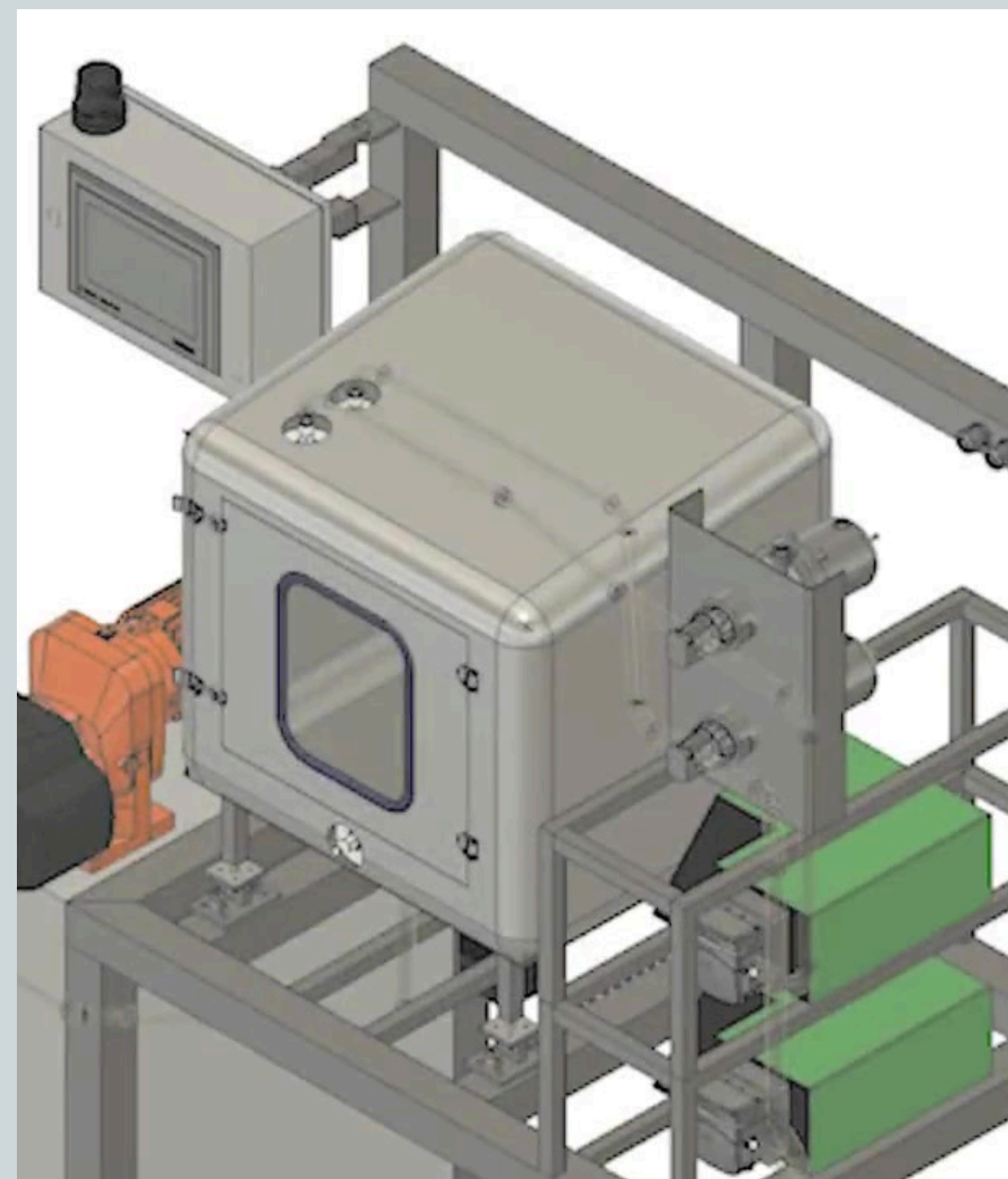
PROJECTS

MANUFACTURING AND SANITARY EQUIPMENT



BIN'S FOR POWDERS

MANUFACTURING AND SANITARY EQUIPMENT



ENGINEERING SOLUTIONS CRANE OPERATIONS

CRANE OPERATIONS



CRANE OPERATIONS

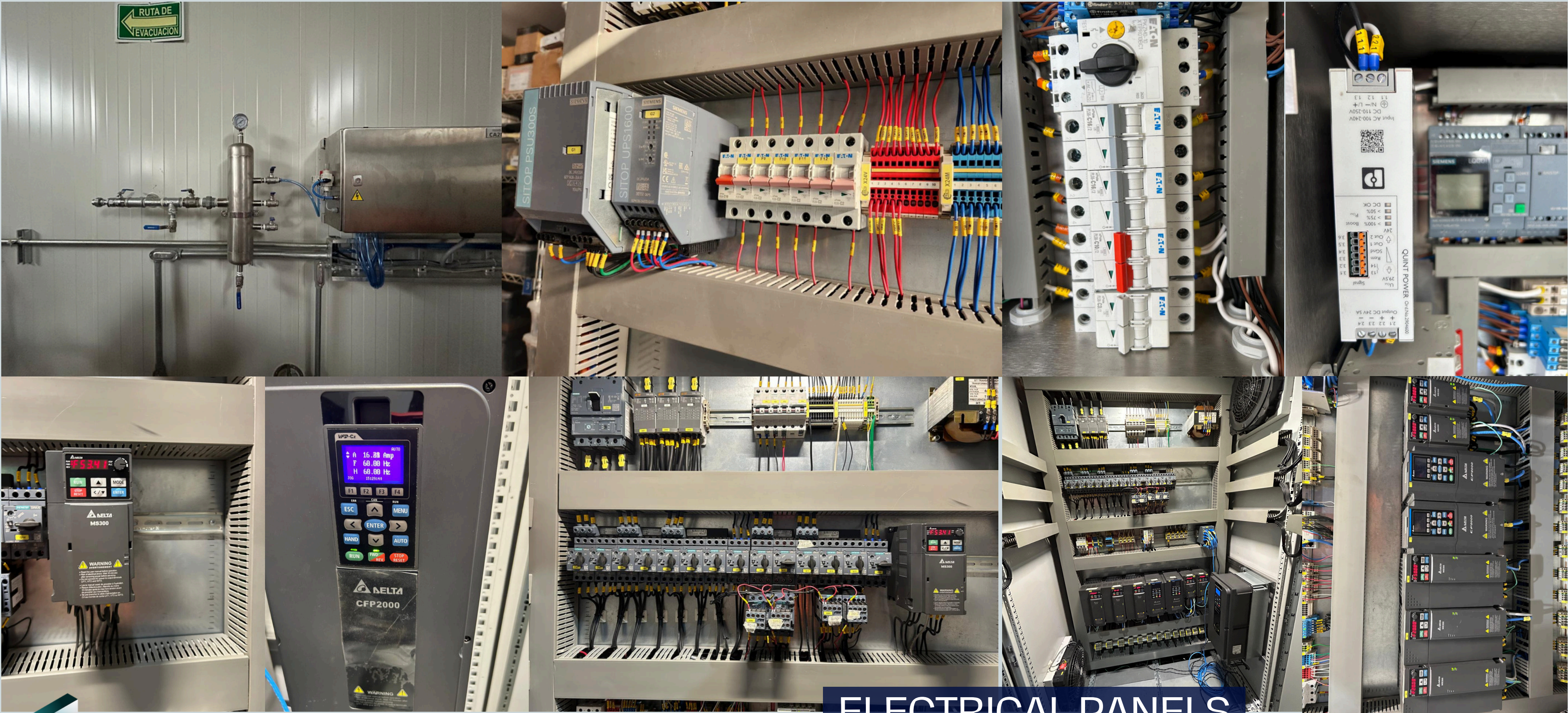


ENGINEERING SOLUTIONS ELECTRICAL INSTALLATIONS AND AUTOMATION



PROJECTS

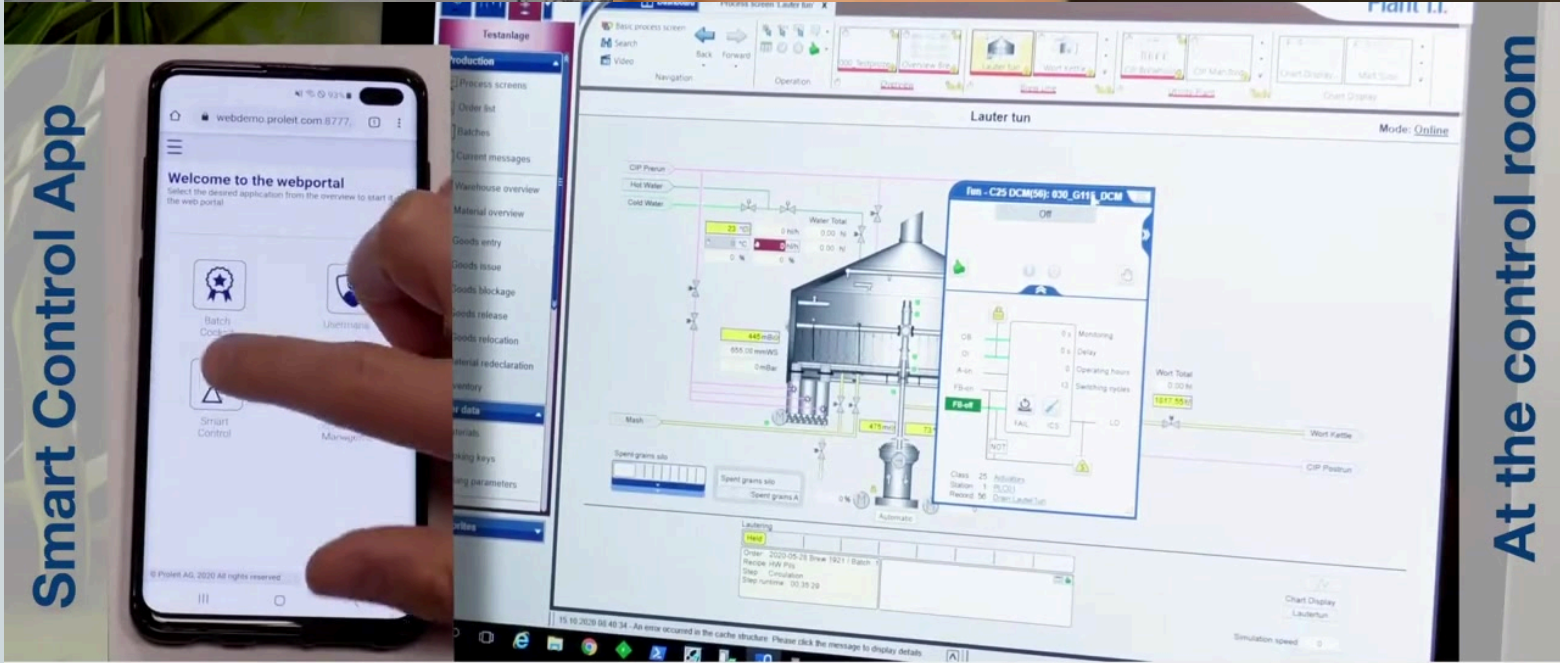
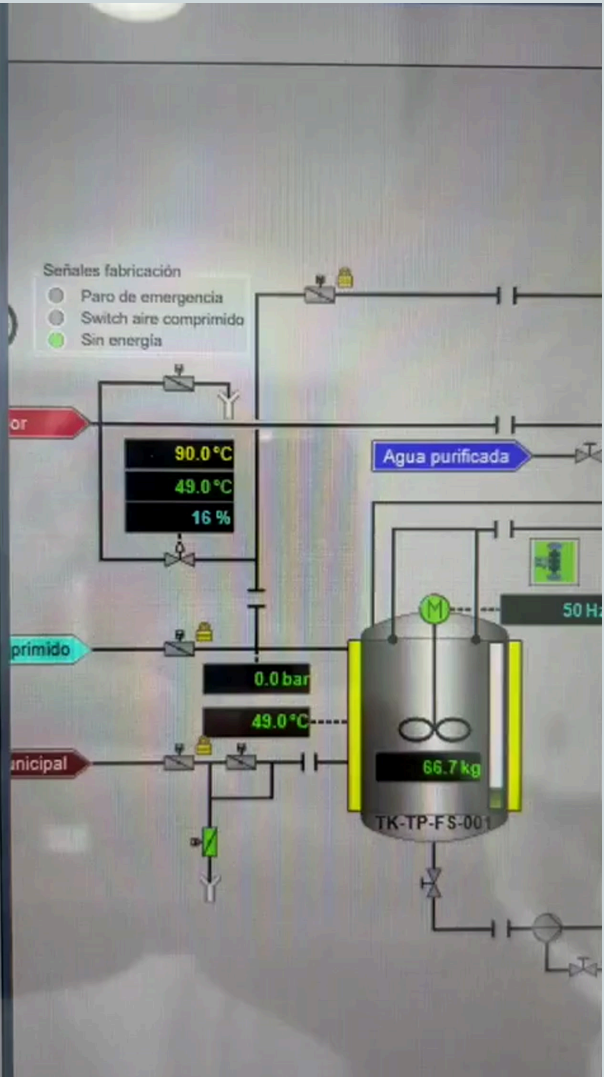
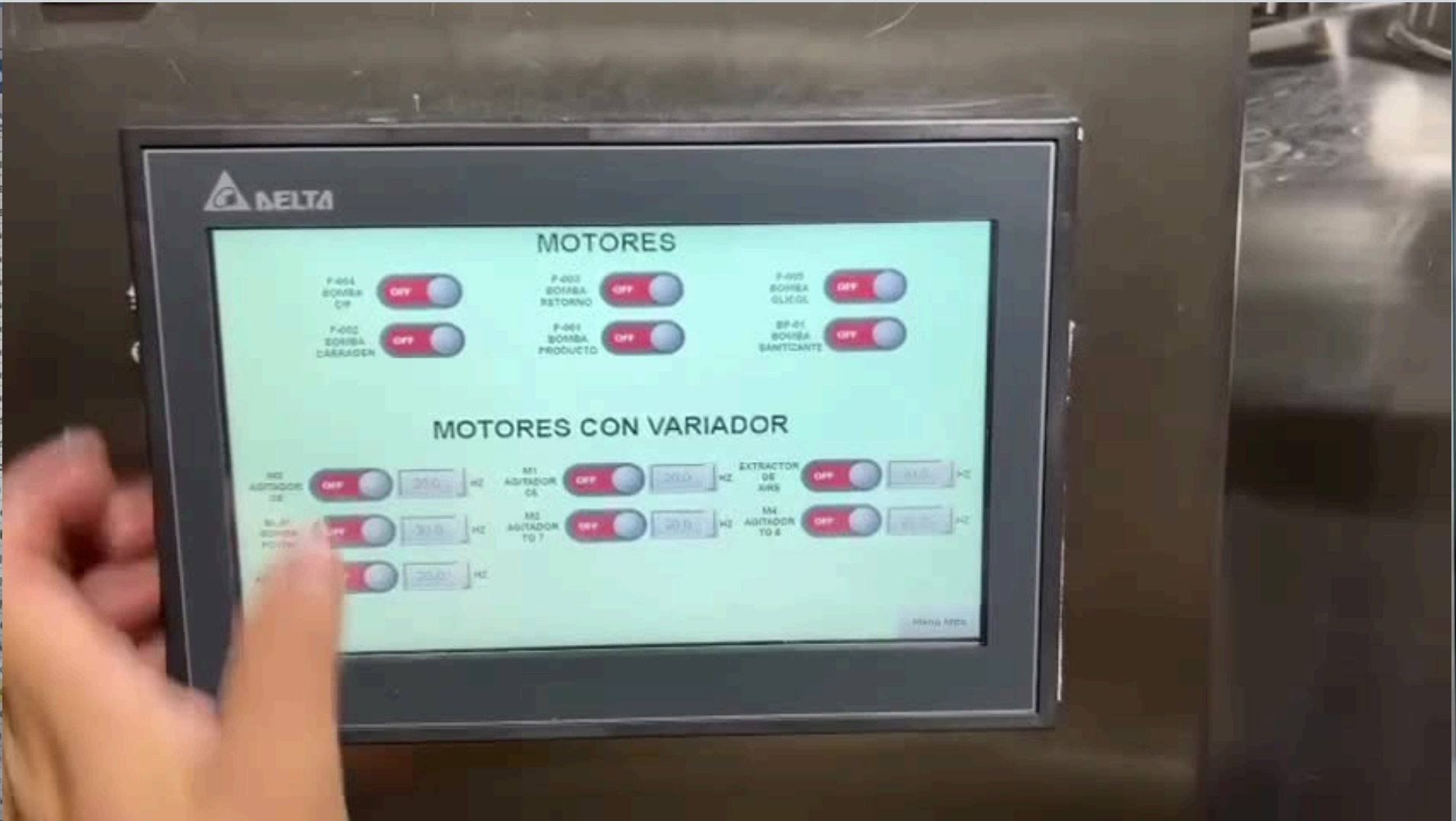
ELECTRICAL INSTALLATIONS AND AUTOMATION



ELECTRICAL INSTALLATIONS AND AUTOMATION



PROJECTS



At the control room



AUTOMATION

Quick and simple operation via a web browser is a particularly advantageous feature of the web apps.

ELECTRICAL INSTALLATIONS AND AUTOMATION



PROJECTS

AUTOMATION

ENGINEERING SOLUTIONS GOOD DOCUMENTATION PRACTICES

DQ

IQ

OQ

PQ



ENGINEERING SOLUTIONS COMMISSIONING AND SUPPORT



PROJECTS



VISIT US IN OUR FORUMS AND EXHIBITIONS

TECHNOLOGYSTEEL.COM



PROJECTS

EXPO
PACK

2024

México

Junio
June 4-7

EXPO SANTA FE MÉXICO

CIUDAD DE MÉXICO • MEXICO CITY



PROJECTS

TECHNOLOGY & STEEL
CALLE CRUZ DEL SUR 3297
LA CALMA, ZAPOPAN, JALISCO

VENTAS@TECHNOLOGYSTEEL.COM
33 3125 3272



TECHNOLOGY & STEEL
PROJECTS