

Mechanical Pressure Switch



measuring
•
monitoring
•
analyzing

KPH300



- Switching Ranges: 3...30 PSIG to 450...4600 PSIG
- Field Adjustable Setpoint
- Diaphragm or Piston Type Sensing Element
- SPDT Micro-Switch Contact
- Reliable and Economical
- Excellent OEM Product



KOBOLD companies worldwide:

ARGENTINA, AUSTRALIA, AUSTRIA, BELGIUM, BULGARIA, CANADA, CHILE, CHINA, COLOMBIA, CZECH REPUBLIC, EGYPT, FRANCE, GERMANY, HUNGARY, INDIA, INDONESIA, ITALY, MALAYSIA, MEXICO, NETHERLANDS, PERU, POLAND, REPUBLIC OF KOREA, ROMANIA, SINGAPORE, SPAIN, SWITZERLAND, TAIWAN, THAILAND, TUNISIA, TURKEY, UNITED KINGDOM, USA, VIETNAM

KOBOLD Instruments, Inc.
1801 Parkway View Drive
Pittsburgh, PA 15205
Main Office:
1.800.998.1020
1.412.788.4890
info@koboldusa.com
www.koboldusa.com



Mechanical Pressure Switch Model KPH300

Description

The KPH300 is an excellent choice for pressure switching applications that require a reliable solution at an affordable price. It utilizes proven diaphragm or piston sensing technology, depending on the measuring range. The setpoint and hysteresis are both field adjustable and their access is protected from the elements beneath the DIN 43 650 electrical connector. These can also be factory-set at your specified setpoint for a small additional charge. The SPDT micro-switch contacts are silver-plated for extended service life. The combination of reliability and low cost also makes the KPH300 an excellent choice for many OEM applications.

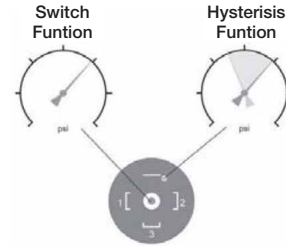
Technical Details

- Switching Ranges:** 3...30 PSIG to 450...4600 PSIG
- Media**
- Diaphragm Type:** Compressed Air or Non-Corrosive Liquids
 - Piston Type:** Self-lubricating fluids, e.g. Hydraulic Oil or Grease
- Process Connection:** 1/4" Male NPT (Others Available in OEM Quantities)
- Measuring Element**
- ≤ 15/225 PSIG: NBR Diaphragm
 - ≥ 150/425 PSIG: Steel Piston with NBR Seal
- Wetted Materials:** Zinc-plated Steel and NBR
- Housing Material:** Zinc-Plated Steel
- Media, Ambient and Storage Temperature:** -4...176 °F
- Proof Pressure**
- ≤ 15/225 PSIG: 870 PSIG
 - ≥ 150/425 PSIG: 5000 PSIG
- Setpoint Repeatability:** ±2% of Full Scale Range
- Setpoint Hysteresis**
- ≤ 15/225 PSIG: ~7-15% of Full Scale Range
 - ≥ 150/425 PSIG: ~7-10% of Full Scale Range
- Max. Contact Rating:** 2 A up to 28 V_{DC}, 4 A up to 125 V_{AC}, 4 A up to 250 V_{AC}
- Service Life:** >1,000,000 Load Cycles
- Ingress Protection:** IP65
- Weight:** 0.2 lbs. Approx.

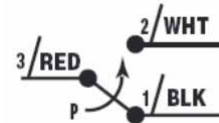
Dimensions



Switchpoint/Hysteresis Adjustment



Switching Output Schematic



Order Details (Example: KPH300-12 150/1700 8 P; 200 PSI Falling)

Model	Switch	Fitting	Switching Pressure Range (Adjustable)		Electrical Connection
KPH300-	..1.. = Single SPDT Contact	..2.. = 1/4" NPT Male (Standard)	..3/30.. = 3...30 PSIG	..150/1700.. = 150...1700 PSIG	..1 = Plug Connector (DIN 43 650) with 36" Cable ..8 = Plug Connector (DIN 43 650) (Standard)
			..7/115.. = 7...115 PSIG	..150/2300.. = 150...2300 PSIG	
			..15/225.. = 15...225 PSIG	..300/2900.. = 300...2900 PSIG	
			..150/425.. = 150...425 PSIG	..300/3600.. = 300...3600 PSIG	
			..150/1150.. = 150...1150 PSIG	..450/4600.. = 450...4600 PSIG	
Options					
..C = Plug Connector (DIN 43 650) with 1/2" NPT Conduit (With Electrical Connection 8)					
..P = Factory-set Switchpoint (Please Specify the Desired Pressure Switchpoint and upon Rising or Falling Pressure)					