

Flow-Rail test lane on wood blocks

No racking or holes in concrete floor / Easy to install
See system in action from all angles / Validate if center track is required
Ideal training for lift-operators



Procedure to install

1. Join rail pieces together
2. Position wood blocks on floor
3. Load tracks
4. Use yellow spacer bars to position tracks
5. Shim wood blocks (if required)
6. Fix tracks to wood blocks
7. Load Flow-Rail chain

Install completed



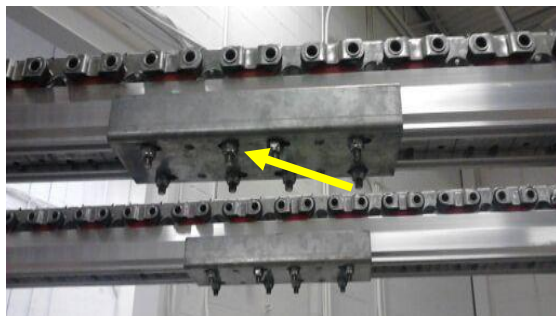
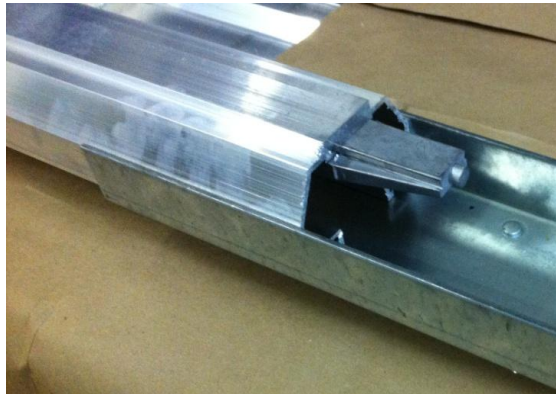
Join rail pieces together

Hammer rails together (touch of lubricant can help) then fix with 4 nuts & bolts

Do not hit bull-nose (see photo 'A')

Top surface of rail joint must be smooth (important)

Insert flanged bolt in rail, twist, then tighten.



Set wood blocks on floor evenly spaced

Maximum opening in-between must not exceed 50"

Do not place last block directly against wall (min 6" distance required)



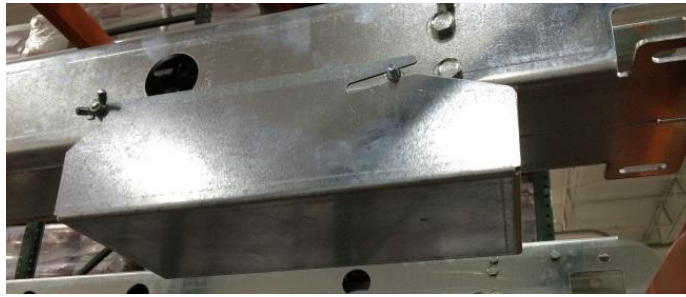
Load tracks on wood blocks

Verify front-head has 6 nuts & bolts

(If some fell-off in transport install using hardware supplied)

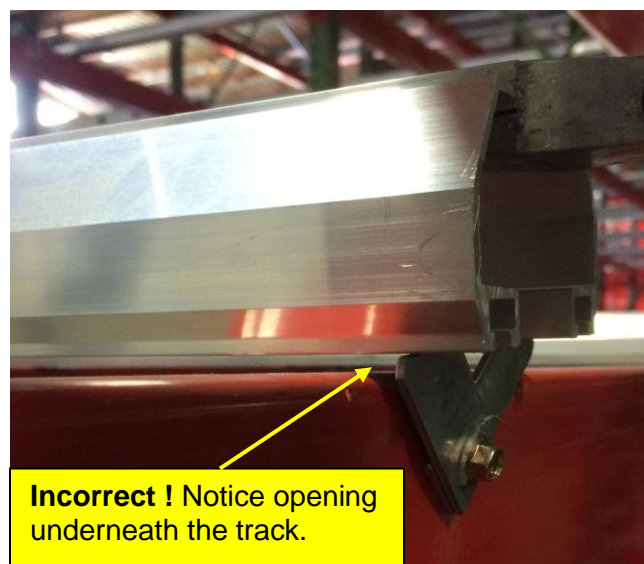
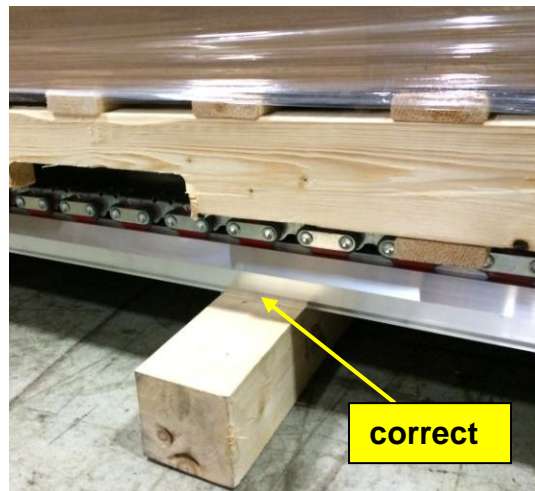


Hook wood chip pans as shown (if ordered)



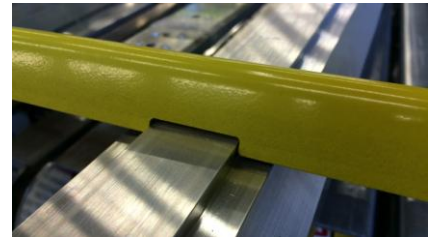
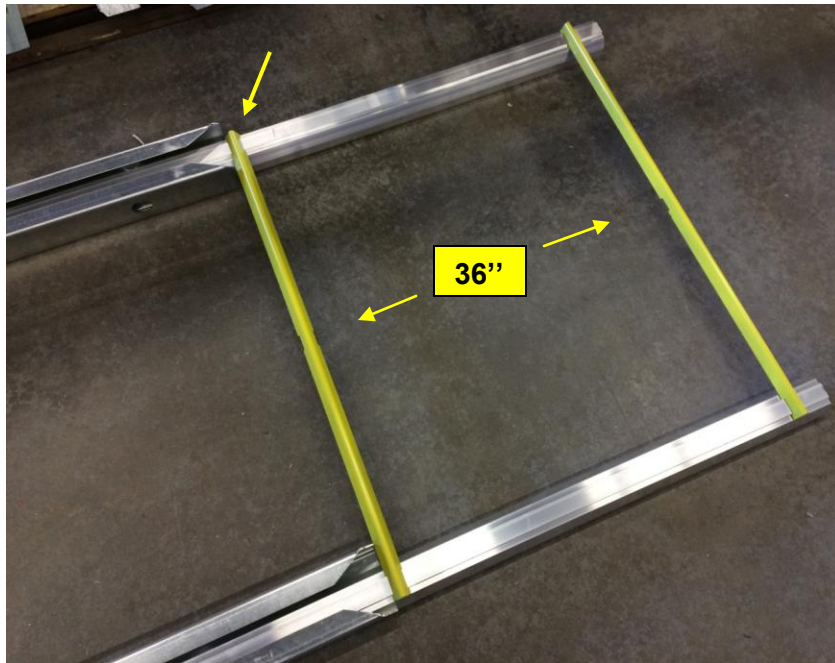
IMPORTANT - each wood block must be in direct contact with the rails

Shim wood blocks if necessary



Position tracks using yellow spacer bars (use minimum 3 bars – important)

1st bar directly behind 50" front-head as shown. Set 2nd and 3rd bar approximately 36" from one another. If lane has 3 tracks, spacer bar is notched for center track positioning



Front of tracks must be flush with front block.



Important: if spacer bar does not fit perfect on either one of the rails shim wood blocks to adjust height.

Flow-Rail tracks must be perfectly horizontal - use a level (or laser guide level)



Fix front of tracks

One of the tracks has a yellow flag - position screw as shown (not in the hole)

Yellow flag must overhang



Fix tracks to wood blocks

Inset & twist quick fix plates - 1 clip 1 side of the block, 1 clip opposite side of the block
Fix with wood screws. Install only enough plates to make sure tracks are well secured
If lanes are long not necessary to fix every wood block

Displace yellow spacer bars to make sure tracks are always fixed perfectly parallel



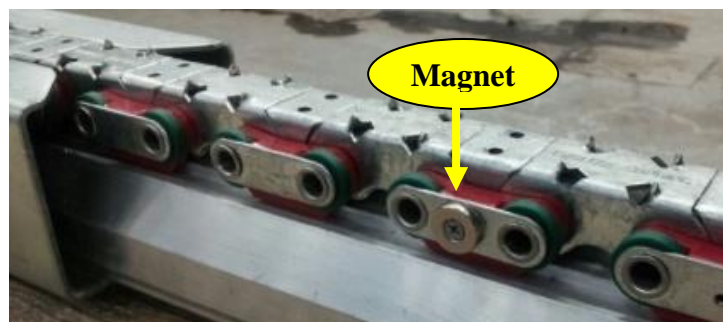
Insert the chain

One of the chains has a magnet used to activate the yellow flag

Feed correct chain in each track

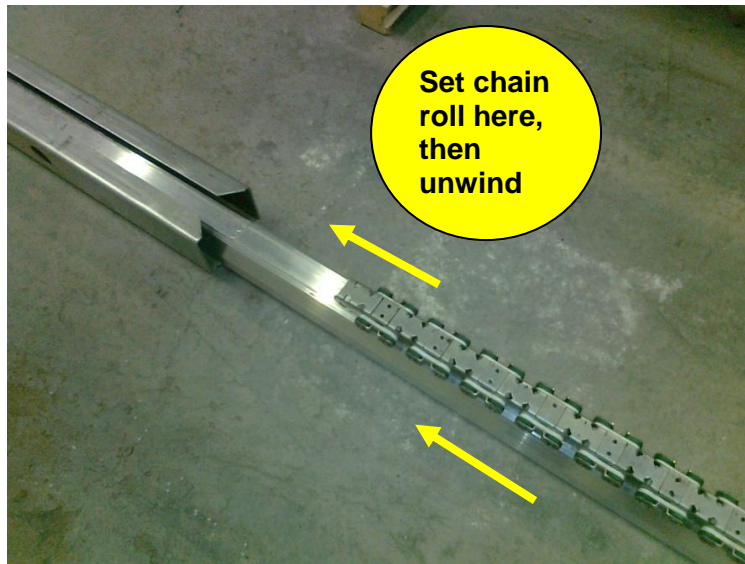
Place chain roll on floor as shown below - handle with care, do not drop with force

One worker places foot in the center of the roll while other worker pulls to unwind chain



Once chain is completely rolled-out place on aluminum rail

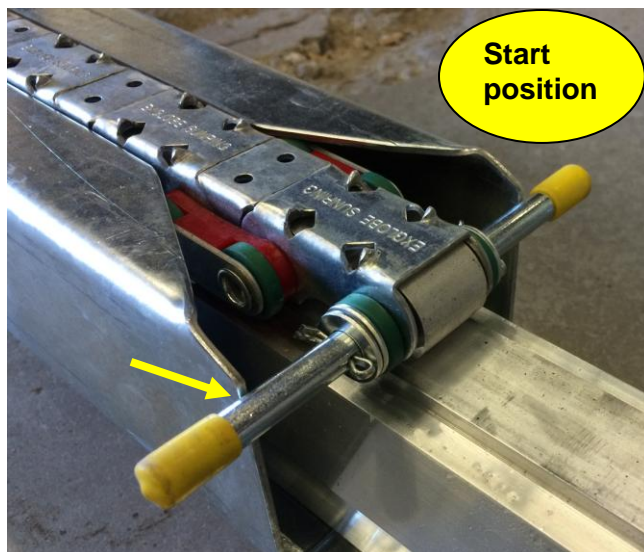
Be careful: chain can easily derail - keep one hand on chain while other hand feeds the track



If chain resists entering beneath rail do not force

Use finger or screwdriver to help chain find its way underneath the track

Once in motion advance chain till it reaches start position shown below (pin against front-head)

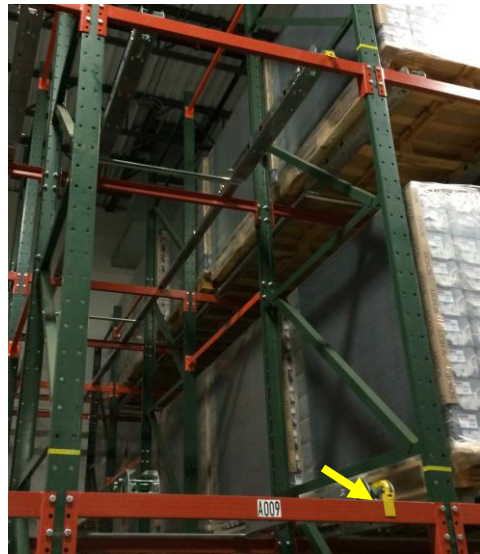


Install completed!!

Operating the system

When 1st pallet is loaded chains must not move

In a typical install tape marker is placed on the upright posts. Driver must always load pallet higher than tape. Chains begin to move when 2nd pallet is entered in the lane



Yellow flag: notice on above photo yellow flag has retracted inside the front head

This indicates lane is now full. As soon as 1 pallet is removed flag will fall back to the front

When unloading, drag each pallet out of the system **including the last remaining pallet**.
Dragging last pallet resets chains to start position. (important)

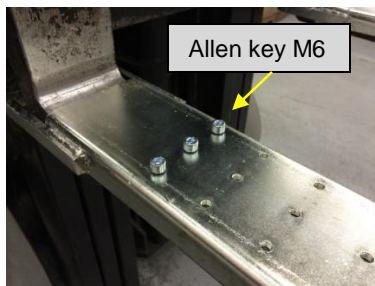
Note: Floor-level is most difficult storage level for drivers since tracks are hard to see

At the beginning do not fill-up lane with pallets. Load a few then unload 1. Add an extra pallet then unload 1, etc. till lane is full. Allows driver to practice unloading + validates lane is functioning properly. Once driver is comfortable with the system no longer necessary to load / unload this way

Never side-shift when pallet in contact with the chains

Never turn lift-truck until pallet is completely outside the system

Use fork-grips provided



pin grips



chain grips

Note: pallet weight-load variations in a lane must not exceed **25%**

Minimum pallet weight **250#**

