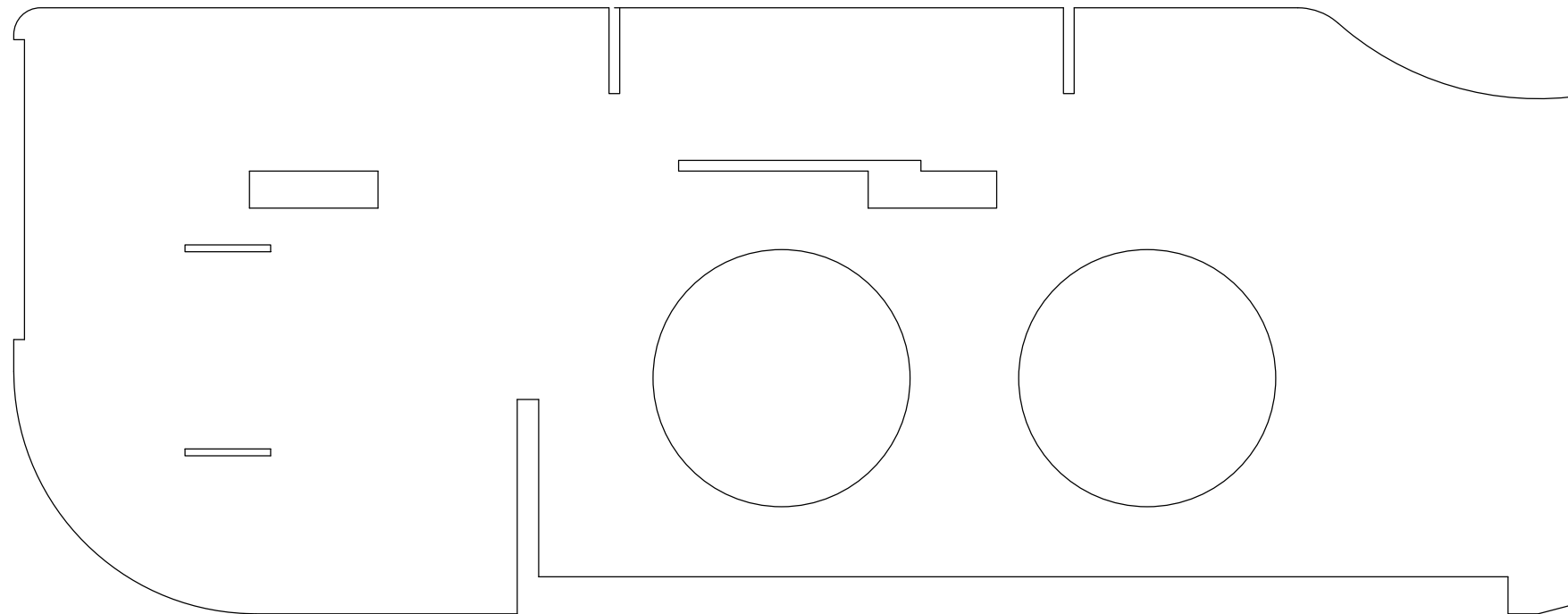


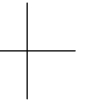
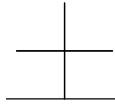
Align "+" marks to make complete template.  
Cut fuselage from 6mm Dupron.



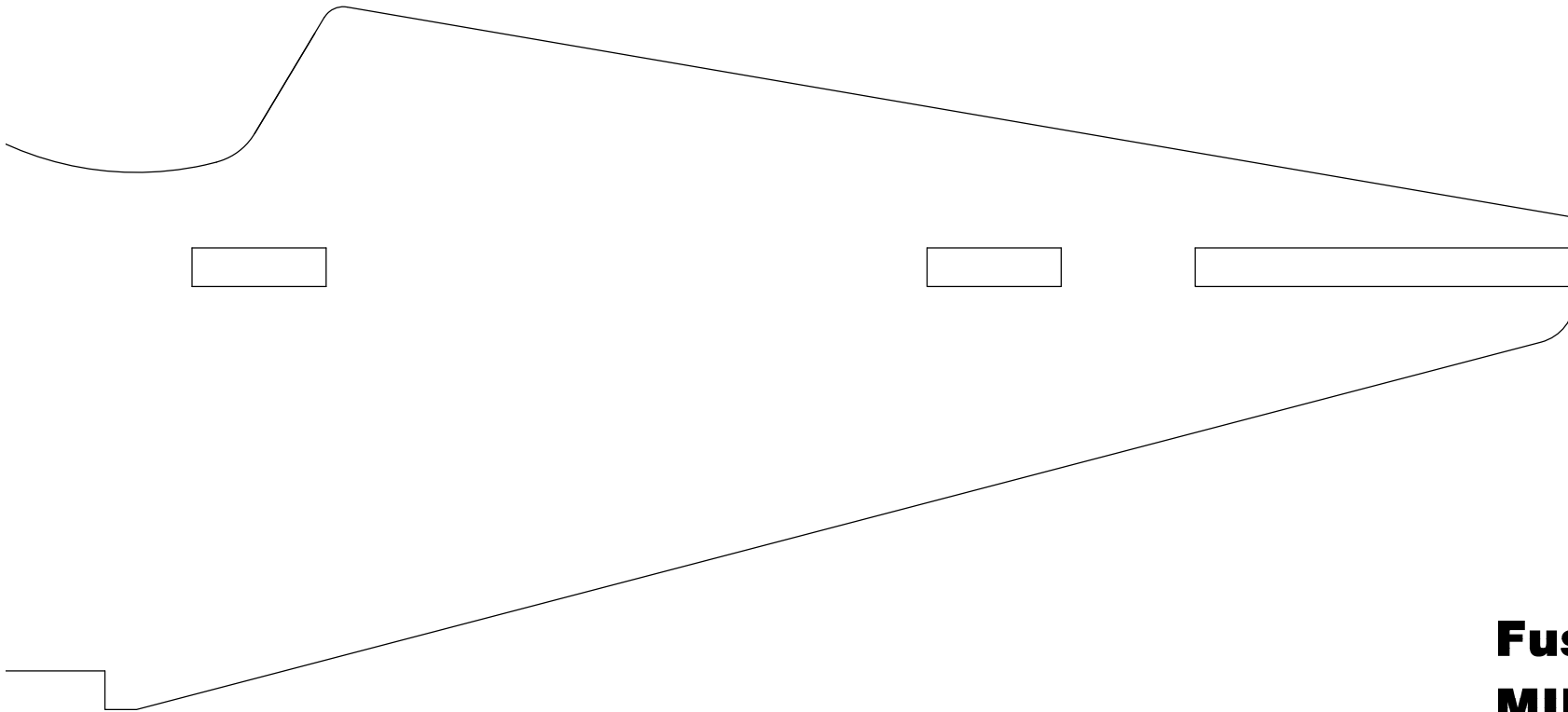
## Fuselage Template

### MINI-E-BIPE II C/L

Designed and Drawn By Carl Hock Sept 2011  
Inspired by Lou Roberts 1/2A C/L "Mini-Bipe"  
originally published in Flying Models Magazine.



Align "+" marks to make complete template.  
Cut fuselage from 6mm Dupron.

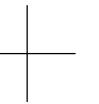
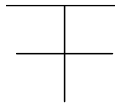


## **Fuselage Template**

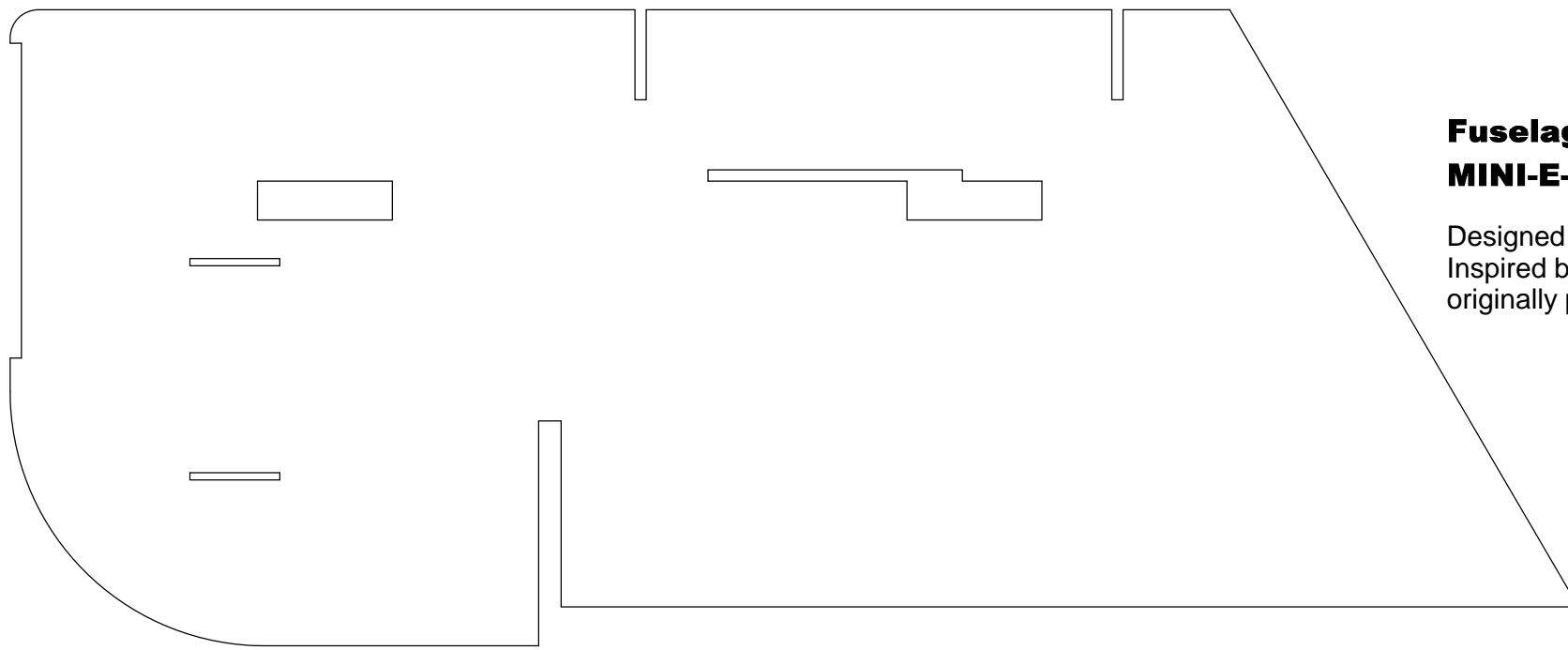
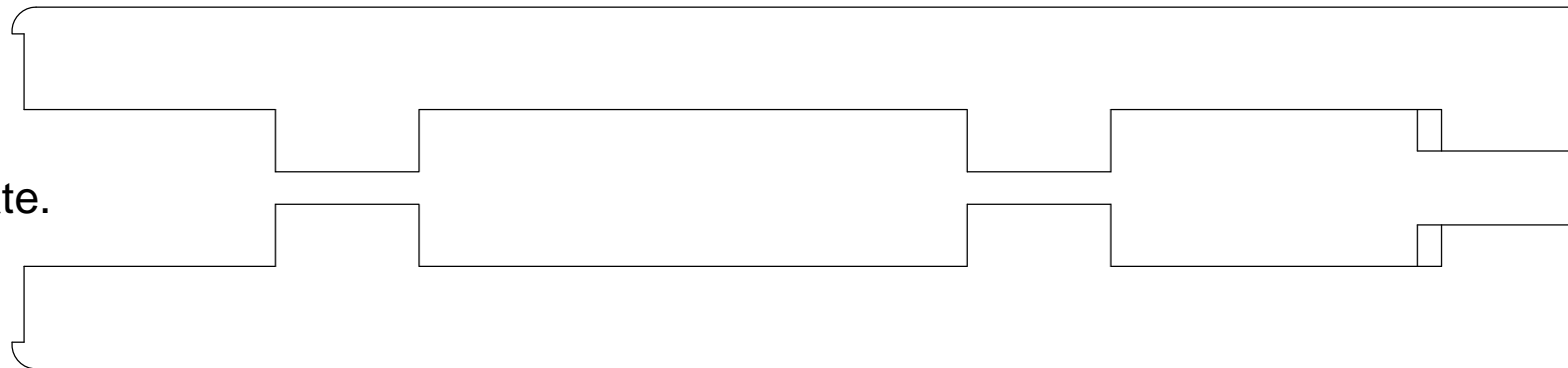
### **MINI-E-BIPE II C/L**

Designed and Drawn By Carl Hock Sept 2011  
Inspired by Lou Roberts 1/2A C/L "Mini-Bipe"  
originally published in Flying Models Magazine.

Sheet 2 Of 2

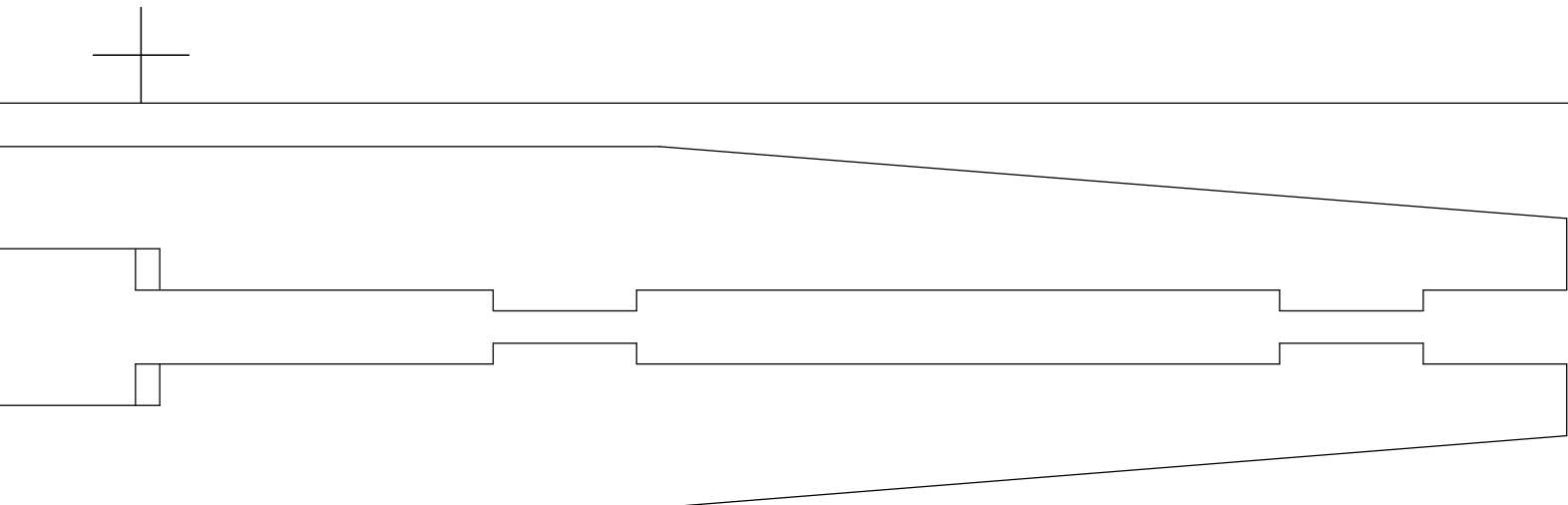


Align "+" marks to make complete template.  
Cut fuselage doublers from 6mm Dupron.



**Fuselage Doubler Templates**  
**MINI-E-BIPE IIa C/L**

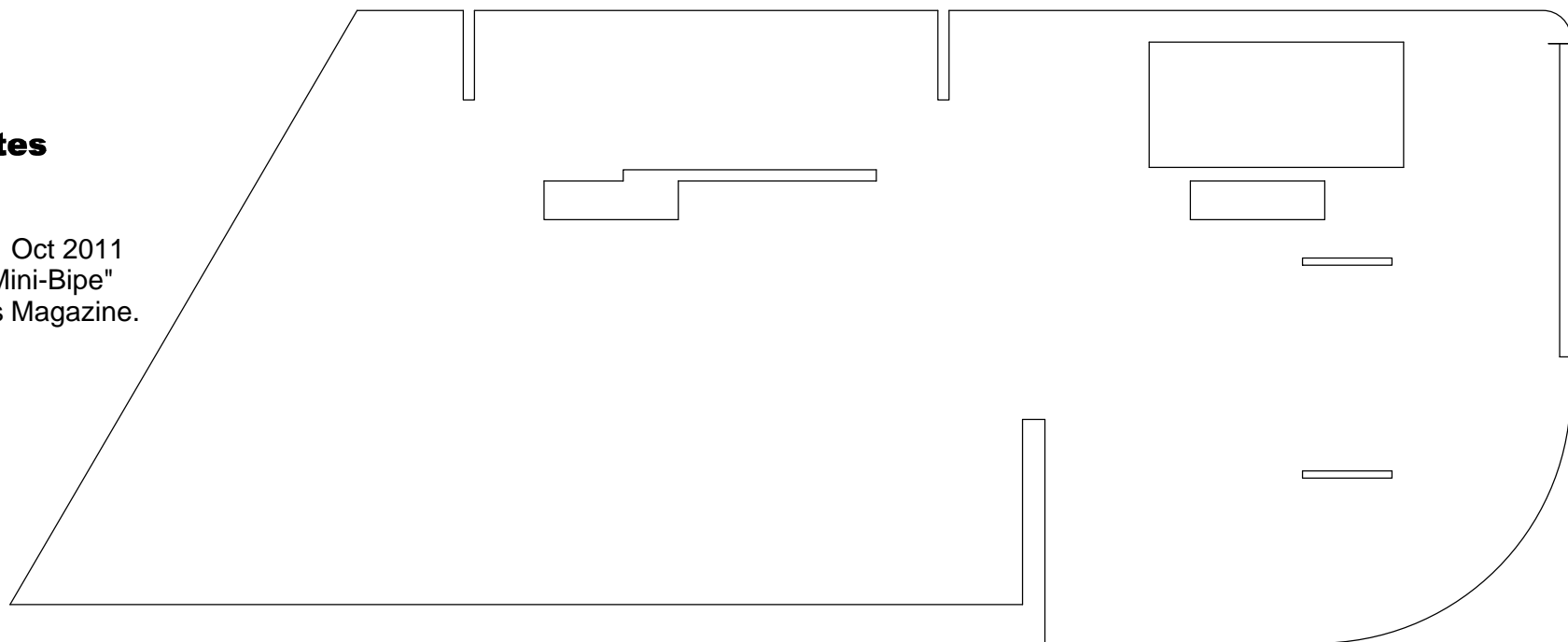
Designed and Drawn By Carl Hock Oct 2011  
Inspired by Lou Roberts 1/2A C/L "Mini-Bipe"  
originally published in Flying Models Magazine.



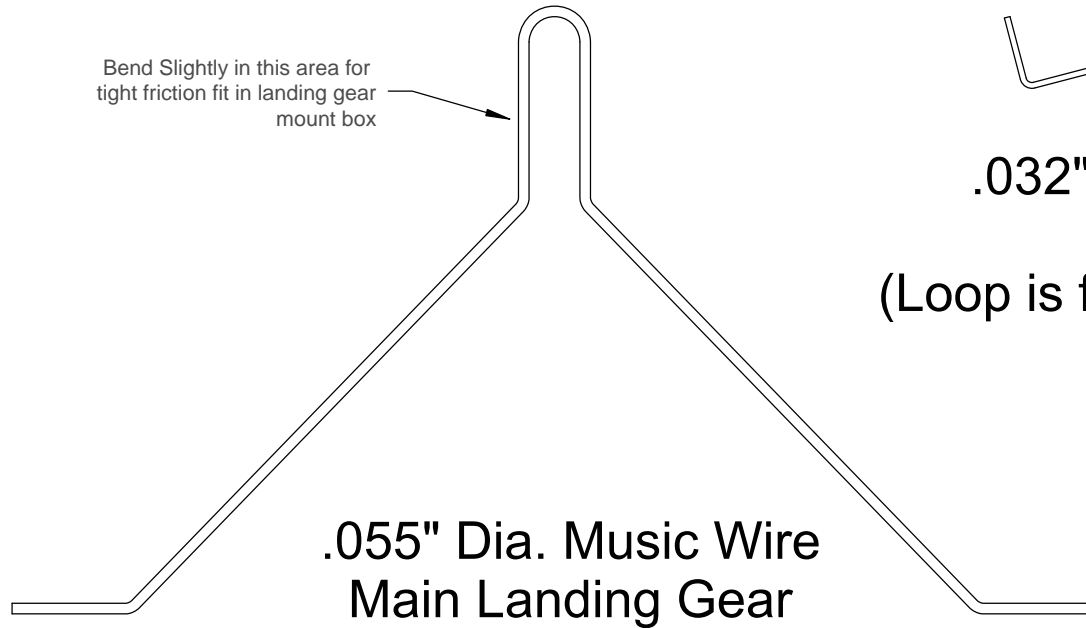
Align "+" marks to make complete template.  
Cut fuselage doublers from 6mm Dupron.

**Fuselage Doubler Templates**  
**MINI-E-BIPE IIa C/L**

Designed and Drawn By Carl Hock Oct 2011  
Inspired by Lou Roberts 1/2A C/L "Mini-Bipe"  
originally published in Flying Models Magazine.

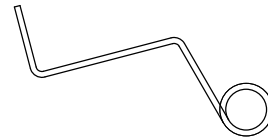


Bend Slightly in this area for tight friction fit in landing gear mount box

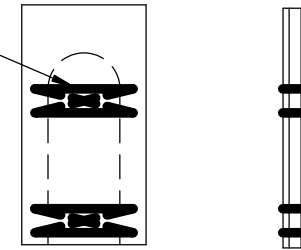


**.055" Dia. Music Wire  
Main Landing Gear**

**.032" Dia. Music Wire  
Tail Skid  
(Loop is for Launching Stoge)**

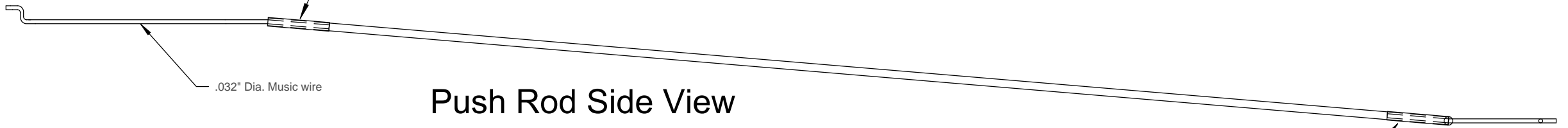


Kelvar Thread  
Use thin cyanoacrylate glue after tying.



**Landing Gear Box Assembly**

1/16" Heat Shrink Tube (Typ.)  
Use thin cyanoacrylate glue to lock in position after assembling on model and adjusting to correct length.



**Push Rod Side View**

**1/16" Dia. Carbon Fiber Push Rod**

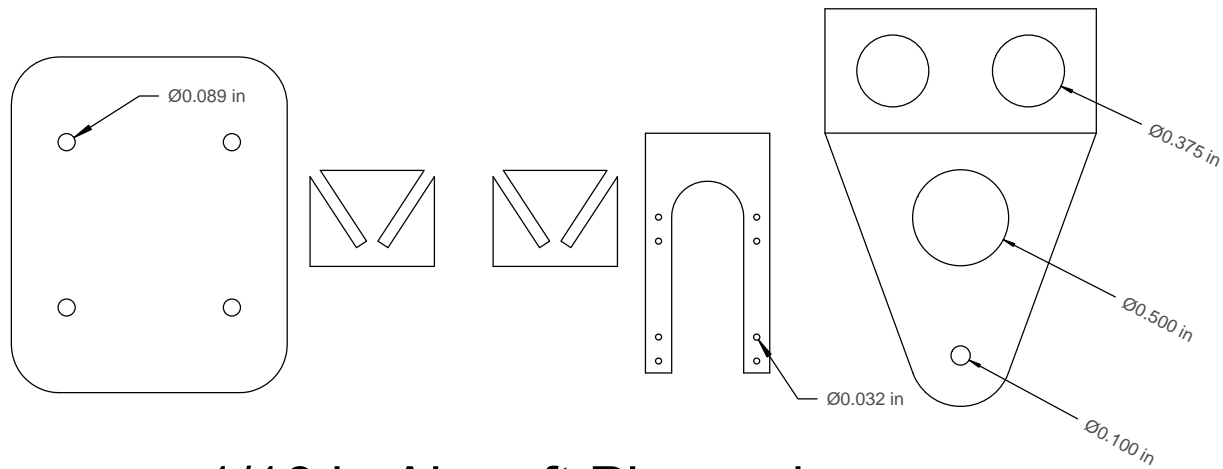
.032" Dia. Music wire



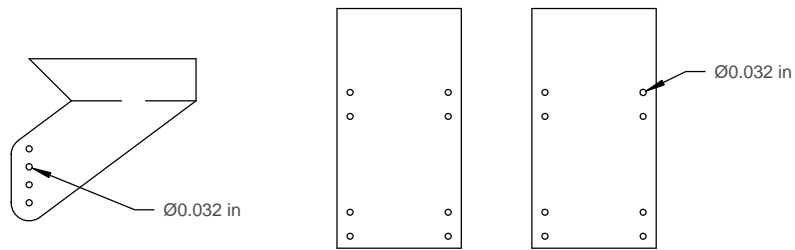
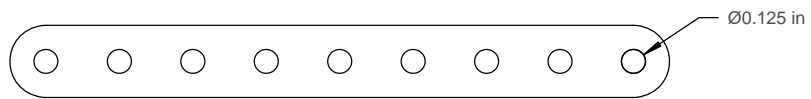
**Push Rod Top View**

**Landing Gear and Elevator Push Rod  
MINI-E-BIPE IIa C/L**

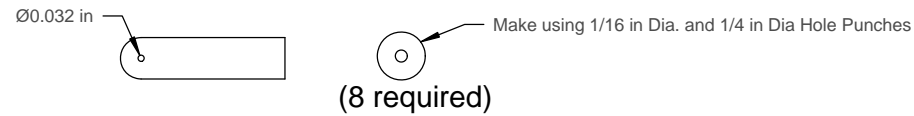
Designed and Drawn By Carl Hock Oct 2011



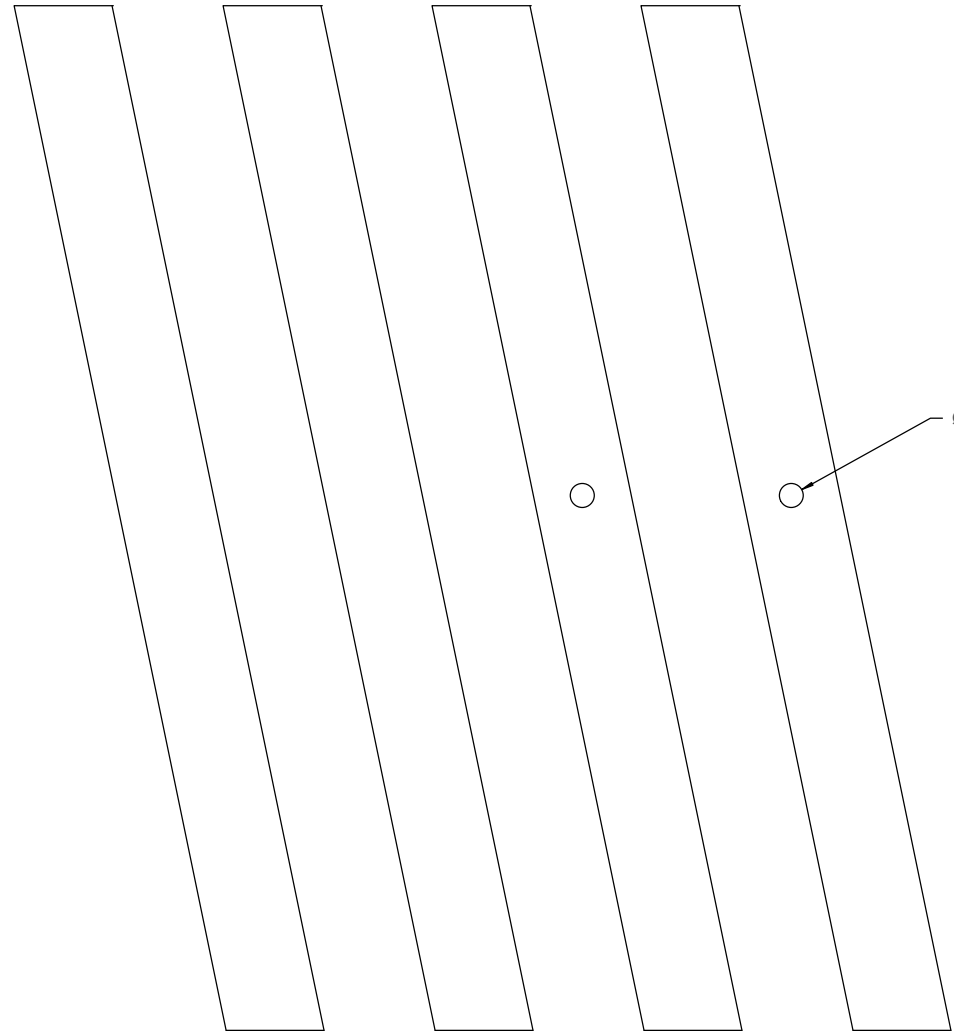
1/16 in Aircraft Plywood



1/32 in Aircraft Plywood



1/64 in Aircraft Plywood

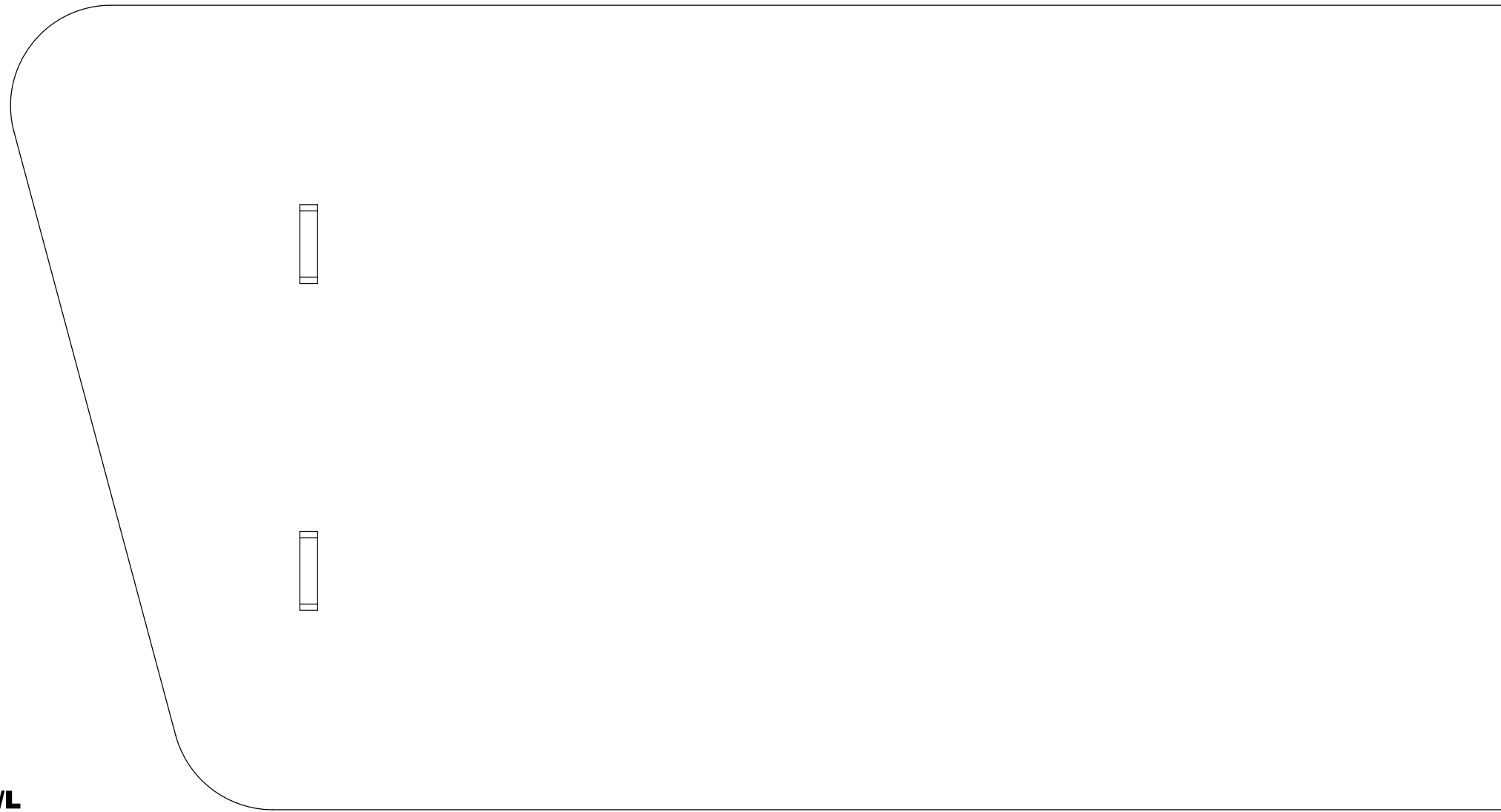


1/8 in Medium Balsa

**Wood Parts**  
**MINI-E-BIPE IIa C/L**  
 Designed and Drawn By Carl Hock Oct 2011

Designed and Drawn By Carl Hock Sept 2011  
Inspired by Lou Roberts 1/2A C/L "Mini-Bipe"  
originally published in Flying Models Magazine.

Align "+" marks to make complete template. Cut wings from 6mm Dupron.



Sheet 1 of 4

**Wing Templates**  
**MINI-E-BIPE II C/L**

Designed and Drawn By Carl Hock Sept 2011  
Inspired by Lou Roberts 1/2A C/L "Mini-Bipe"  
originally published in Flying Models Magazine.

Align "+" marks to make complete template. Cut wings from 6mm Dupron.

Align "+" marks to make complete template. Cut wings from 6mm Dupron.

Designed and Drawn By Carl Hock Sept 2011  
Inspired by Lou Roberts 1/2A C/L "Mini-Bipe"  
originally published in Flying Models Magazine.



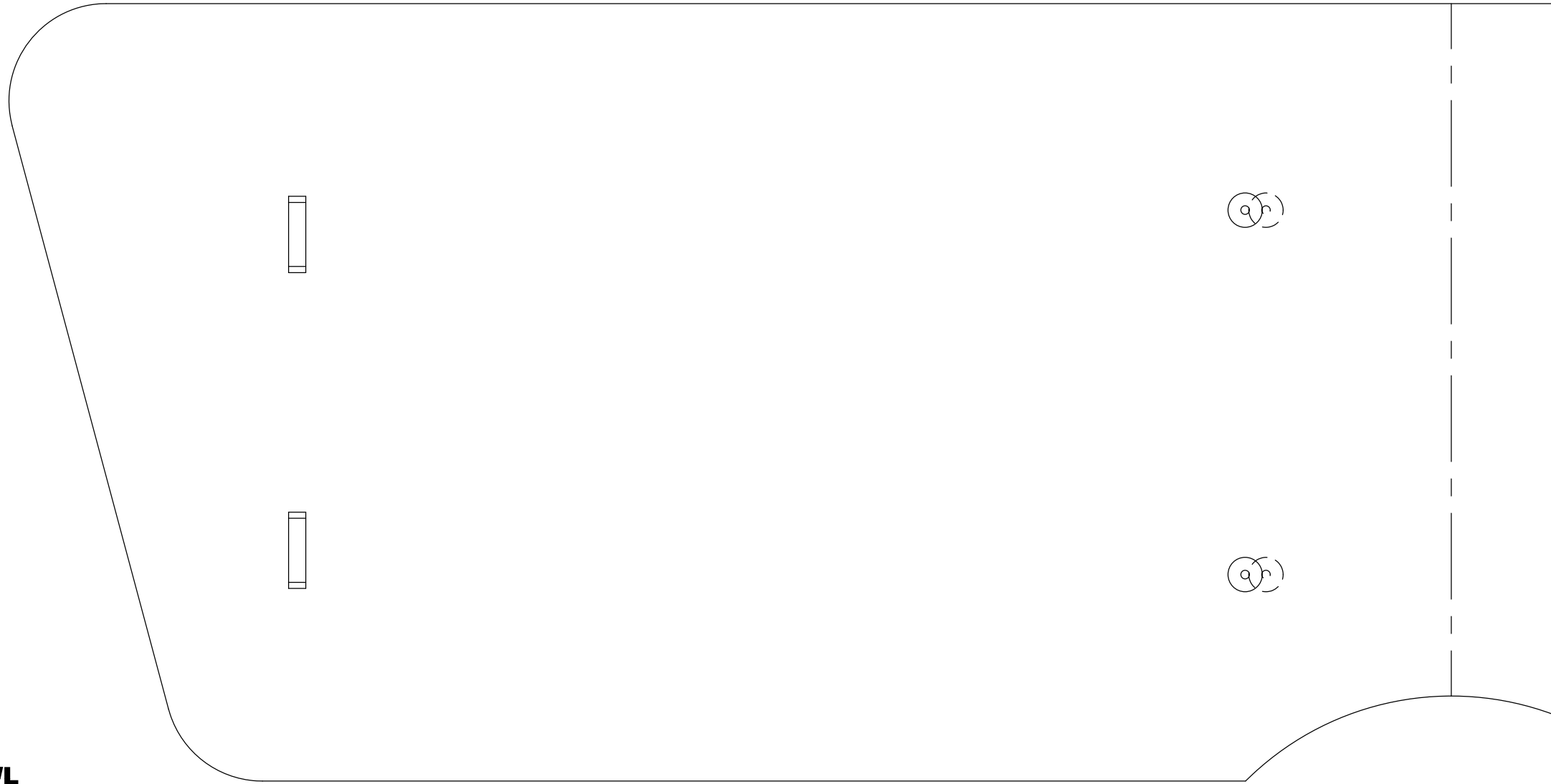
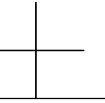
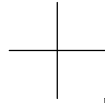
Sheet 2 of 4

**Wing Templates**  
**MINI-E-BIPE II C/L**

Align "+" marks to make complete template. Cut wings from 6mm Dupron.

Designed and Drawn By Carl Hock Sept 2011  
Inspired by Lou Roberts 1/2A C/L "Mini-Bipe"  
originally published in Flying Models Magazine.



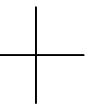
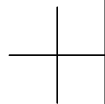


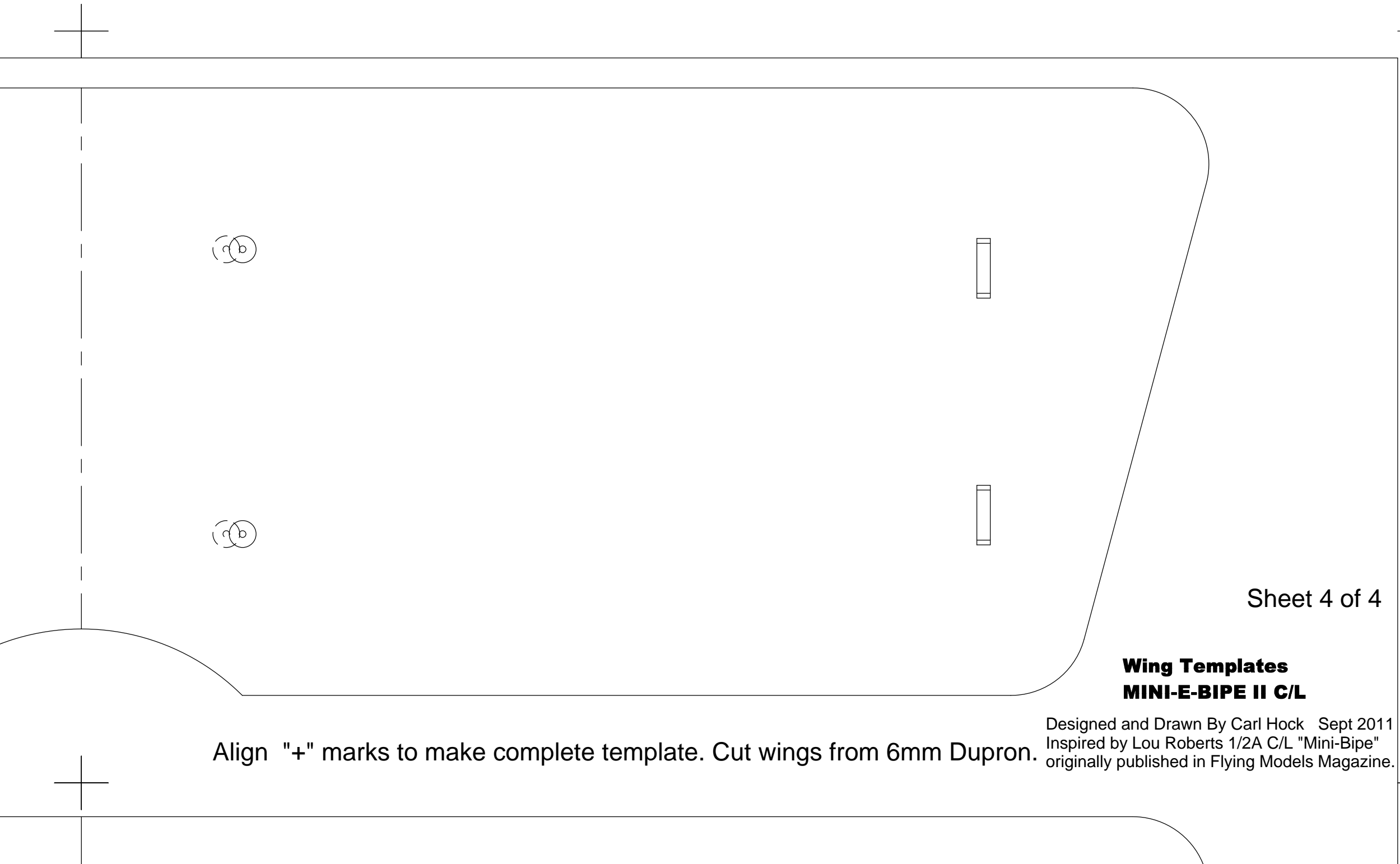
Sheet 3 of 4

**Wing Templates**  
**MINI-E-BIPE II C/L**

Designed and Drawn By Carl Hock Sept 2011  
Inspired by Lou Roberts 1/2A C/L "Mini-Bipe"  
originally published in Flying Models Magazine.

Align "+" marks to make complete template. Cut wings from 6mm Dupron.



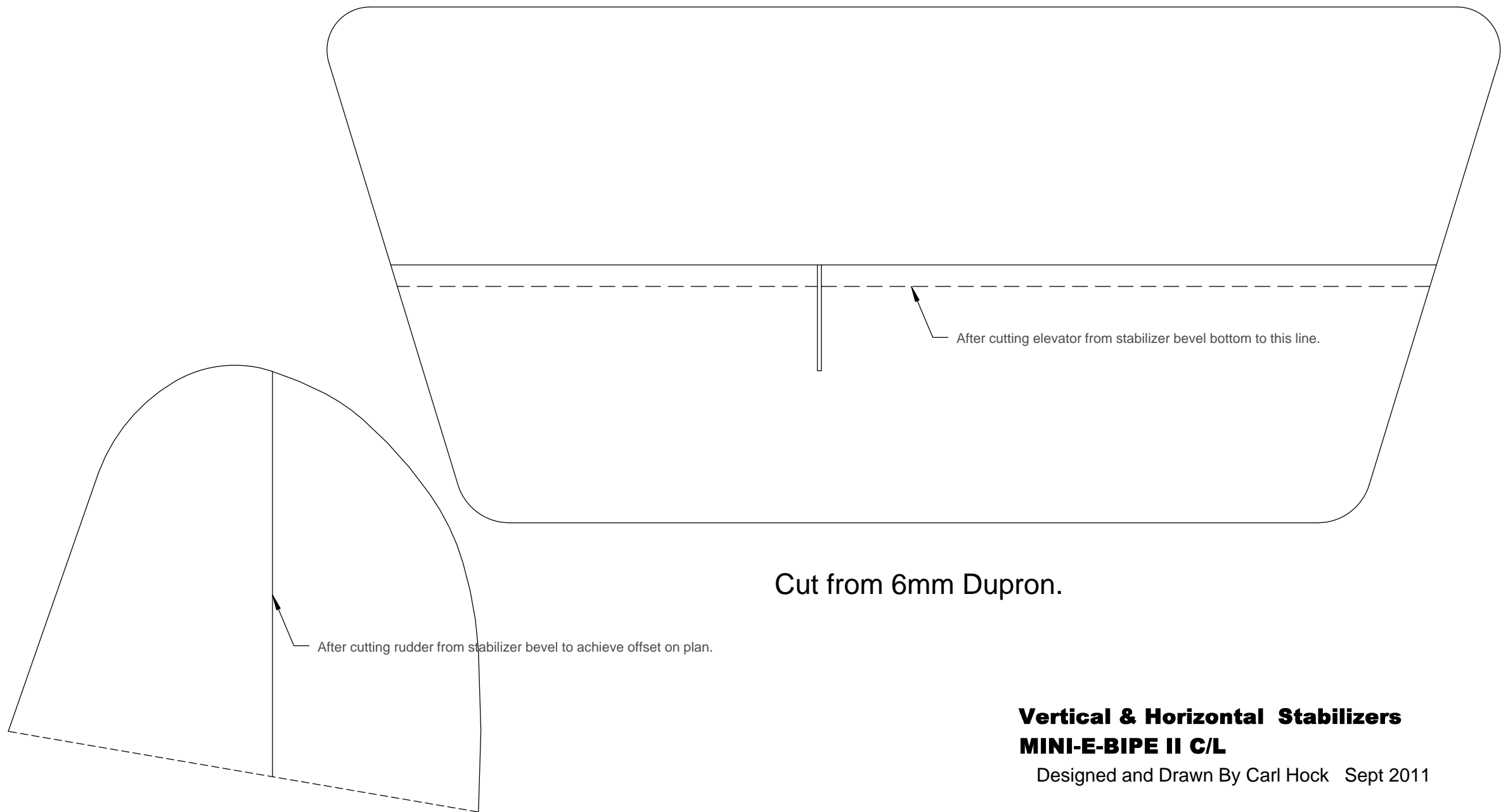


Sheet 4 of 4

**Wing Templates**  
**MINI-E-BIPE II C/L**

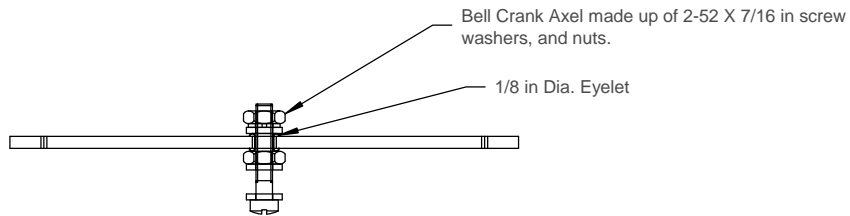
Designed and Drawn By Carl Hock Sept 2011  
Inspired by Lou Roberts 1/2A C/L "Mini-Bipe"  
originally published in Flying Models Magazine.

Align "+" marks to make complete template. Cut wings from 6mm Dupron.

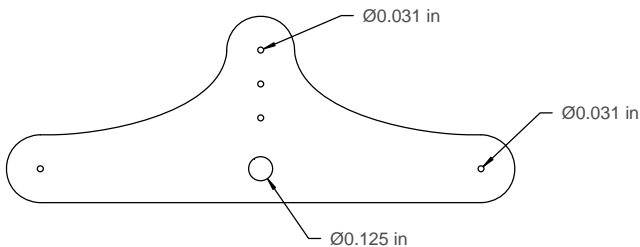


**Vertical & Horizontal Stabilizers**  
**MINI-E-BIPE II C/L**

Designed and Drawn By Carl Hock Sept 2011



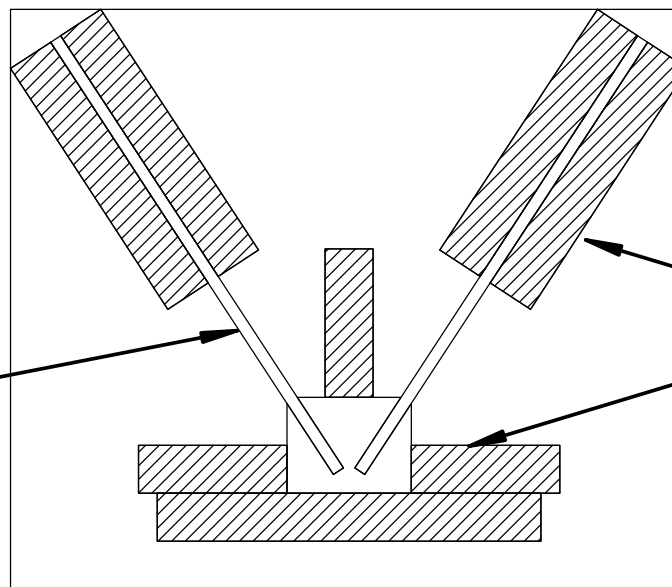
**Bellcrank Assembly**



**Bellcrank Pattern**

Make from 1/16 in Phenolic  
.050 in Aluminum or similar  
material.

1/16 in Dia. Carbon  
fiber solid rod  
cabane



1/16 in X 1/4 in Scrap  
Balsa Pinned to  
building board  
form gluing fixture.

**Cabane Assembly Fixture**  
Use epoxy glue

**Bellcrank and Cabane Assembly Fixture**  
**MINI-E-BIPE II C/L**

Designed and Drawn By Carl Hock Sept 2011

Mini-E-Bipe II C/L  
Wing Assembly Fixture  
Make from 1/4 in Thick  
Foam Board  
(2 Required)

Notches are for light rubber bands used to hold wings in position

Designed and Drawn By Carl Hock Sept 2011

