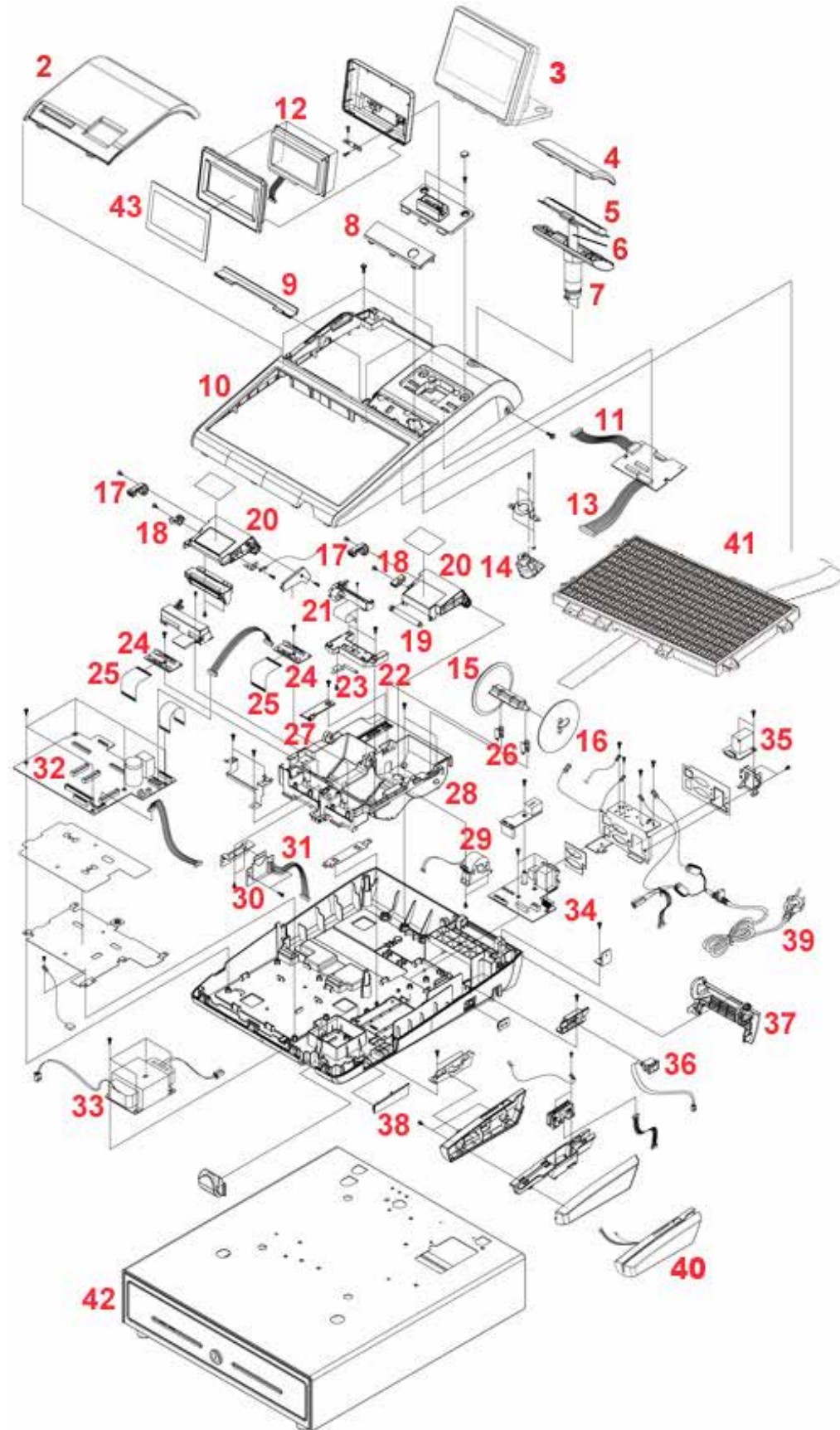


SPS-340 Replacement Parts



Ref. No.	CRS Item No.	Description
02	101460	Cover, Printer SPS-340/ER-940
03	501759	Front Display Assy SPS-300
04	101462	Turret, Window ER-900 SPS-300
05	501761	Display Rear ER-900 SPS-300
06	101463	Cable, Ffc Turret ER-900 SPS-3 00
07	101464	Turret Body Bottom ER-900 SPS
08	101466	Cover, Mode SPS-300
09	101467	Cap, Printer ER-900 SPS-300
10	101468	Case, Upper ER-900 SPS-300
11	101469	Harness, Main To LCD 18P
12	501773	LCD Assy - SPS-300
13	101470	Harness, Main To LCD 22P
14	101472	Mode Switch ER-900 SPS-300
15	466009	Spool Winding LTPD245
16	101309	Guide Winding ER-5200,15,40
17	466001	Knob Release LTPD245
18	466002	Link Release LTPD245
19	466003	Roller, Platen LTPD245
20	466004	Housing Clam LTPD245
21	466000	Printer Unit LTPD245
22	466005	Holder, Printer LTPD245
23	466006	Plate Ground Holder LTPD245

Ref. No.	CRS Item No.	Description
24	466007	Pba Sub Board LTPD245
25	466015	Cable FFC 30P 90mm LTPD245
26	466010	Spool Lock LTPD245
27	103008	Cover, SD Slot SPS-5X0
28	466017	Paper Supply LTPD245 2Station
29	466012	Take Up Motor LTPD245
30	466013	Board SD Card Slot Er-900/SPS3
31	466014	Harness, SD Card LTPD412
32	501764	Logic Board SPS-340/320
33	101473	Transformer Power ER-900/SPS3
34	501768	Board Interface SPS-320/40
35	501531	Rs232 Option Brd ER-900/SPS-300
36	101474	Power Switch ER-900/SPS-300
37	101475	Door, Interface ER-900 SPS-300
38	101476	Door, Msr ER-900 SPS-300
39	205268	Power Cord ER-265/285/900/300
40	501530	Mcr Option ER-900/SPS-300
41	501535	Keyboard Flat SPS-300
42	160157	Drawer Model 57 ECR Black 24V
43	101477	Window, Front SPS-300/ER-900
Not Illus.	501763	Printer Assy LTPD245 2-Station