

Centerline, Inc.

513 E. Wisconsin Avenue

Appleton, WI 54911

Phone (920) 730-0615

Fax (920) 730-0622

E-mail info@ctrline.net

Website www.ctrline.net



ROTALIGN® Ultra Shaft

Measure and align multiple coupling concurrently



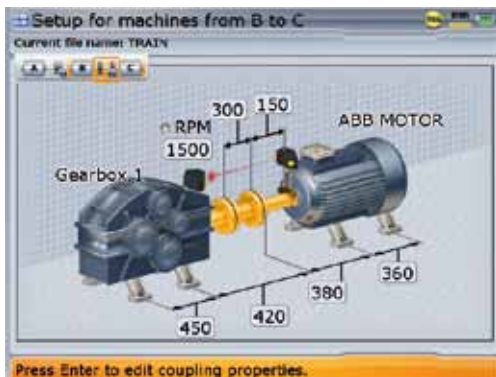
ROTALIGN® Ultra Shaft

Multiple coupling add-on module

The shaft alignment of machine trains with two or more couplings can now be achieved within the shortest possible time. With only one twist ROTALIGN® Ultra measures simultaneously and continuously, the alignment condition of up to five couplings. This new Expert Shaft add-on module runs on the ROTALIGN® Ultra platform and utilizes the unique ROTALIGN® 5-axis sensor technology which guarantees the highest precision and straightforward measurement. Wireless communication instantly allows data transfer between all the sensors and the computer.

Live Move function monitors in real time both the horizontal and vertical corrections of all the machines simultaneously.

ROTALIGN® Ultra is the only system in the market offering this unparalleled high-tech capability for the alignment of multiple-element drives.



3-D graphics allow excellent interpretation for the user



All couplings are measured simultaneously and continuously with only one shaft twist

Highlights

Simultaneous and continuous measurement of up to 5 couplings

Simultaneous 'Live' correction of up to 6 machines

Wireless data transfer between the ROTALIGN® Ultra computer and the sensors

3-D set-up screen for a clear view of the machines to be aligned

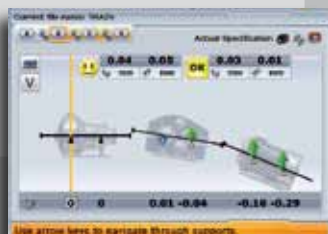
Very fast and precise alignment job

Different measurement modes are available for each individual coupling

Colour tolerance arrows assist user during machine corrections

Live Move and tolerances

The unique ROTALIGN® measurement principle allows the machine correction to be monitored simultaneously in both horizontal and vertical directions with the laser and sensor mounted at any angular position on the shaft. Machine graphics show the direction and the correction value of feet to be moved. Particularly helpful are the coloured tolerance arrows for the simultaneous multiple coupling machine corrections. The tolerance arrows change colour according to the alignment condition.



Measurement modes

ROTALIGN® Ultra has several measurement modes for different applications. Users are able to select the measurement mode suitable for applications such as uncoupled shafts, non-rotatable shafts, shafts that are hard to turn as well as different bearing types. This implies that for the multiple coupling application, each individual coupling can be measured using the ideal measurement mode guaranteeing that all the couplings are measured with the highest precision.



PRÜFTECHNIK
Alignment Systems GmbH
Freisinger Str. 34
85737 Ismaning, Germany
Tel. +49 89 99616-0
Fax. +49 89 99616-100
info@pruftechnik.com
www.pruftechnik.com