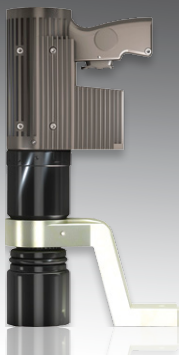


PRODUCT RANGE



THERE ARE MANY TECHNIQUES TO TIGHTEN BOLTS.
WE OFFER THE RIGHT TOOL FOR YOUR APPLICATION.

- ✓ **ELECTRIC** (Electric Torque Multipliers)
- ✓ **PNEUMATIC** (Pneumatic Torque Multipliers)
- ✓ **HYDRAULIC** (Hydraulic Torque Wrenches)
- ✓ **MANUAL** (Manual Torque Multipliers)



ELECTRIC TORQUE MULTIPLIERS

Electric torque multipliers by alkitronic® are ideal where high torques, fast operating speed, high precision or a high number of joints are demanded. Especially where an extreme fast assembly of joints is required. The IP54 rated tools protect against moisture and dust. From 100 Nm to 42,000 Nm. Mobil and always ready for use: alkitronic® EA (battery driven). Up to 4,000 Nm.



HYDRAULIC TORQUE WRENCHES AND PUMPS

Hydraulic wrenches are ideal when heavy bolt connections with large threads need to be tightened in areas difficult to access and with high forces. Torques up to 83,000 Nm. Also for applications in areas exposed to explosion hazards. Our fast hydraulic pumps speed up your work flow and thus save time and money.

There is no substitute for the perfect torque multiplier.
Whether for assembly, production or on construction sites, the best possible method should be used to obtain the perfect torque. Using alkitronic's universal torque multiplier program you do not have to compromise performance, accuracy, efficiency, productivity nor safety.
The unique quality of our torque multipliers made in Germany gives you a leading-edge in performance.

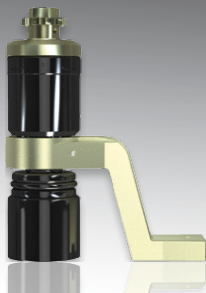


PNEUMATIC TORQUE MULTIPLIERS

Forget impact wrenches with torque setting. Unlike impact wrenches our tools need no hammer mechanism, they rotate continuously.

This produces greater bolted joint accuracy and greater tool life.
Also for use in hazardous areas!

Up to 48,000 Nm.



MANUAL TORQUE MULTIPLIERS

Manual torque multipliers by alkitronic® replace hazardous and inaccurate impact wrenches, pipe extensions and other inefficient solutions.

An anti-wind-up ratchet prevents a backwind when tightening; this is fitted for safer operation of the tools.

From 200 Nm to 50,000 Nm.

Mounting-Documentation-Systems (MDS) + APP

- High controllable torque output
- Guaranteed traceability and documented joints
- Repeatability in tightening – regardless disturbances
- High mobility – independent of external power supply
- Torque- and angle sensor directly on the square drive
- Several preset programs
- Menu-guided easy operation

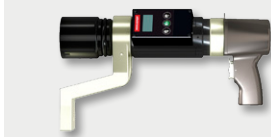
HSD (manual)



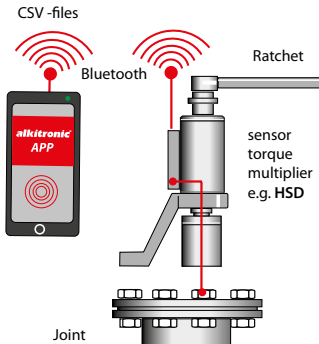
EASD (battery driven)



CLSD (pneumatic)



alkitronic® APP application diagram



alkitronic® APP

- For use in combination with alkitronic® HSD, EASD and CLSD
- Multilingual
- Simple operation
- Suited for iOS and Android smartphones
- Bluetooth interface
- International quality standards

alki TECHNIK GmbH

Development, Production and
Distribution of Bolting Systems
Unterlettenweg 4
D-85051 Ingolstadt

fon +49 (841) 97499-0
fax +49 (841) 97499-90
info@alkitronic.com
www.alkitronic.com

Electric Torque Multipliers

E (Type PG)



From 370 to 10,000 Nm. Electric driven 2-speed torque multiplier.

ECip / ECWip



From 75 to 6,500 Nm. Bolting programmes, Bluetooth. ECW = angled version.

EF / EFW



From 400 to 42,000 Nm. EFW = angled version. Upon request water resistant design.

EA (with battery)



Battery driven 2-speed torque multiplier. Up to 4,000 Nm.

R / SG



For bolting connections on plate heat exchangers.

ECip-N



With extensions for applications i.e. on deep rims.

In 1984, company founder Albert Kipfelsberger invented and patented the electric torque multiplier, to demonstrate its advantages over hydraulic torque wrenches: i.e. continuous rotating instead of slow ratcheting operation, greater accuracy by precise reaching of the torque, more reliable technology and lower running costs.

- Greater accuracy due to automatic motor shut-off
- Extremely high rundown speed, two to three times faster than hydraulic tools
- Torque tools with brushless synchronous motor creating a greatly reduced risk of failure and offers maximum flexibility
- Models with protection class IP54 immune to moisture, dust and even rain
- Greater repeated accuracy due to continuous rotation of hex nuts
- The tools (except Type PG) are usable in all international main grids (100-253V / 45-66 Hz) with constant torque precision; ideal for portable generators
- Master quality boltings according to the torque/angle procedure

Hydraulic Torque Wrenches and Pumps

AT



Up to 72,000 Nm.

AX



Up to 49,240 Nm with interchangeable hexagon link.

Norwolf



Up to 83,000 Nm with interchangeable hexagon link.

Pump VELOX



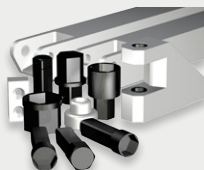
Electric driven hydraulic pump. Up to 700 bar.

Pump NOVA



Electric driven hydraulic pump up to 700 bar, max. 15 l/min.

Accessories



Flexible solutions for your applications.

For certain industrial bolting applications hydraulic wrenches are sometimes the first choice due to application demand i.e. in cases of restricted and difficult to access bolt connections. Our wrenches and pumps offer:

- For bolting applications that require powerful performance in tight spaces, the flat design is made to fit in small spaces without sacrificing power. This gives you better accessibility, better power and reduced repair costs
- Due to trouble-free reaction torque accuracy is achieved without interference by lateral forces
- Fast and simple changing of the hexagon link ensures flexible operation of the tool
- The hydraulic pumps are extremely robust and handle for high work rates
- Integrated motor protection prevents overload damages
- Patented technology (EP 1400313, US 6,966240)
- Electric pumps NOVA and VELOX can be used worldwide in all power supplies

Pneumatic Torque Multipliers

CLS



From 60 to 3,500 Nm.
Fast and compact.

CLD



From 160 to 9,800 Nm.
Comfortable and rotating.

CLS 2



From 120 to 48,000 Nm
with speed and power gear.

CLV



For 1-4 torque multipliers, up to
3,500 Nm. With remote control.

RCL



For bolting connections
on plate heat exchangers.

LS-N



With extension
for low-lying joints.

Pneumatic torque multipliers by alkitronic® have more to offer than impact wrenches or ratchet hydraulic wrenches. During the bolting process they rotate continuously without any hammer or ratchet mechanism. Tightening the components is made smoother, faster and more accurate.

- The torque accuracy is considerably higher than when using impact or hydraulic wrenches
- The compact design and the cast aluminium housing ensure high strength. The tools are almost indestructible
- The high-performance gear ensures fast operation speed
- The simple one-finger rocker switch ensures a more comfortable operation
- All pneumatically driven torque multipliers can be EX certified upon request (II 2 G D c IIB T6)
- Optional: noise reduction filters, 2 speed tools, assembly, etc.

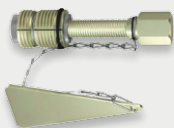
Manual Torque Multipliers, Flange Boy, Thread Cleaner

M (Type HG)



From 200 to 50,000 Nm.
Equipped with anti-windup ratchets allowing jobs to be performed easily, efficiently and safely. No additional power source is required. "Manpower" will do!

Flange Boy



Ideal for separation of piping for inspection works/maintenance. Easy and absolutely safe mechanical separation of piping flanges.

Thread Cleaner



Solid or corroded threads prevent to achieve accurate torque values. The Thread Cleaner thoroughly cleans bolts, screws and nuts. This saves valuable time.

alkitronic® manual torque multipliers replace impact wrenches, pipe extensions and other inadequate and hazardous solutions in the field of torque tightening. They are superior to ordinary torque wrenches.

alkitronic® manual multipliers never require more than 400 Nm input, and can reach torque values up to 50, 000 Nm.

- High level of operation safety
- Low energy input, accurate transfer of high torque
- Precision anti-wind-up ratchet allows efficient operation with very short movements and short assembly time
- Robust power gear for highest possible operational demands, produced in a chipless precision process (casting)
- The integrated shearing pin protects against input overload