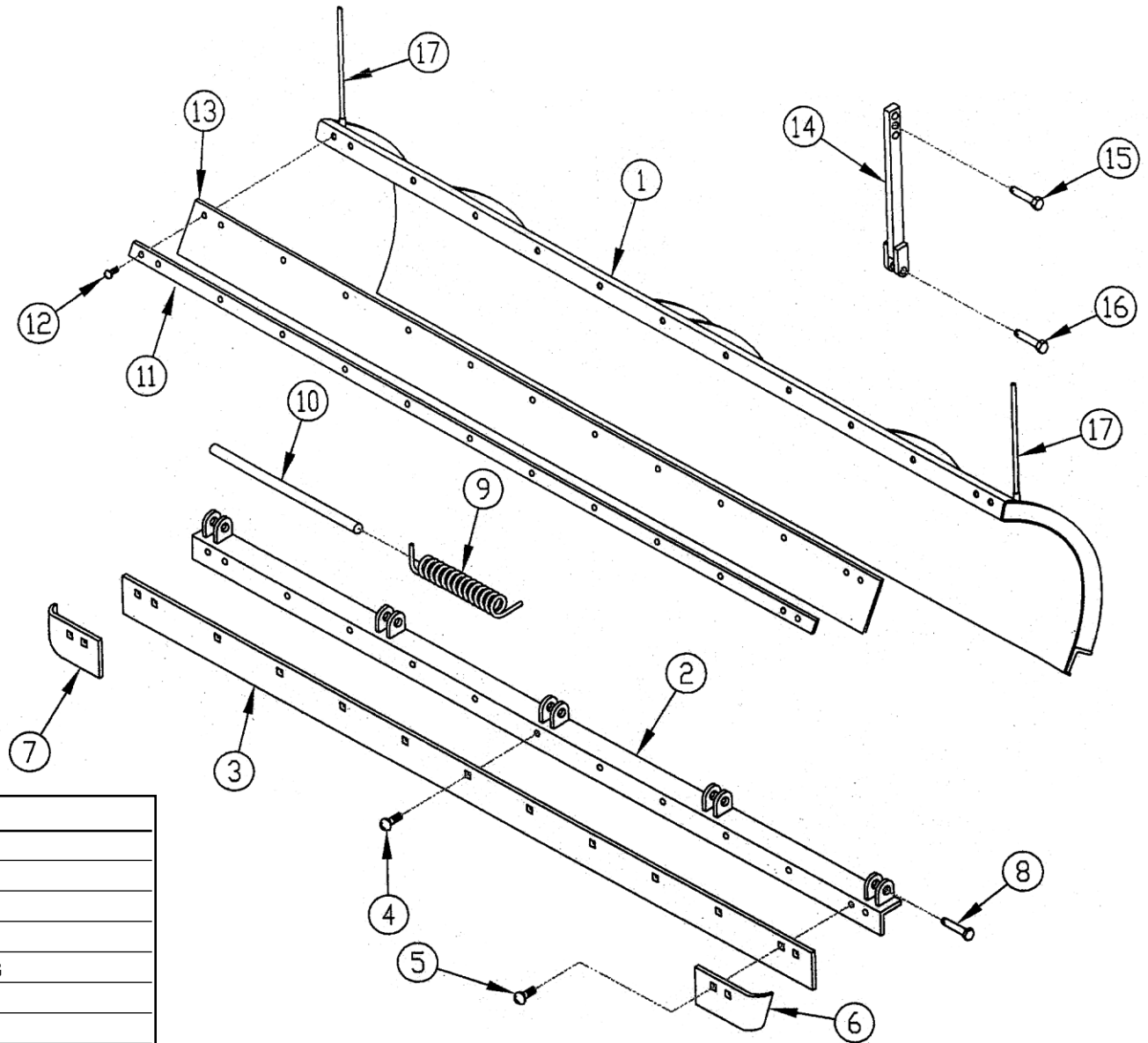


ALWAYS INCLUDE
SERIAL NO. OF
PLOW WHEN
ORDERING PARTS



ITEM	PART #	REQ.	DESCRIPTION
1	SEE ORDER	1	MOLDBOARD
2	SEE ORDER	1	BLADE BACKER ANGLE
3	SEE ORDER	1	CUTTING EDGE
4	SEE ORDER	AS REQ'D	CUTTING EDGE BOLTS
5	SEE ORDER	AS REQ'D	CUTTING EDGE BOLTS - LONG
6	6511-A2	1	L.H. CURB SHOE
7	6511-A1	1	R.H. CURB SHOE
8	16717-A	AS REQ'D	PIVOT PIN FOR BACKER ANGLE - 1-1/4" X 4"
9	14791-A	AS REQ'D	TRIP EDGE SPRING
10	SEE ORDER	AS REQ'D	PIN FOR TRIP EDGE SPRING
11	SEE ORDER	AS REQ'D	RETAINER BAR
12	5308-A23	AS REQ'D	BAFFLE BOLTS - 1/2" X 1-1/2" LG.
13	SEE ORDER	AS REQ'D	RUBBER BAFFLE
14	SEE ORDER	AS REQ'D	MOLDBOARD SUPPORT BAR
15	11685-A2	AS REQ'D	TOP SUPPORT BAR PIN
16	14128-A5	AS REQ'D	BOTTOM SUPPORT BAR PIN
17	13595-B	AS REQ'D	PLOW MARKER POLE ASS'Y

The Gledhill Road Machinery Co.

PARTS DRAWING FOR
TRIP EDGE MOLDBOARDS PD-1085

ALWAYS INCLUDE
SERIAL NO. OF
PLOW WHEN
ORDERING PARTS

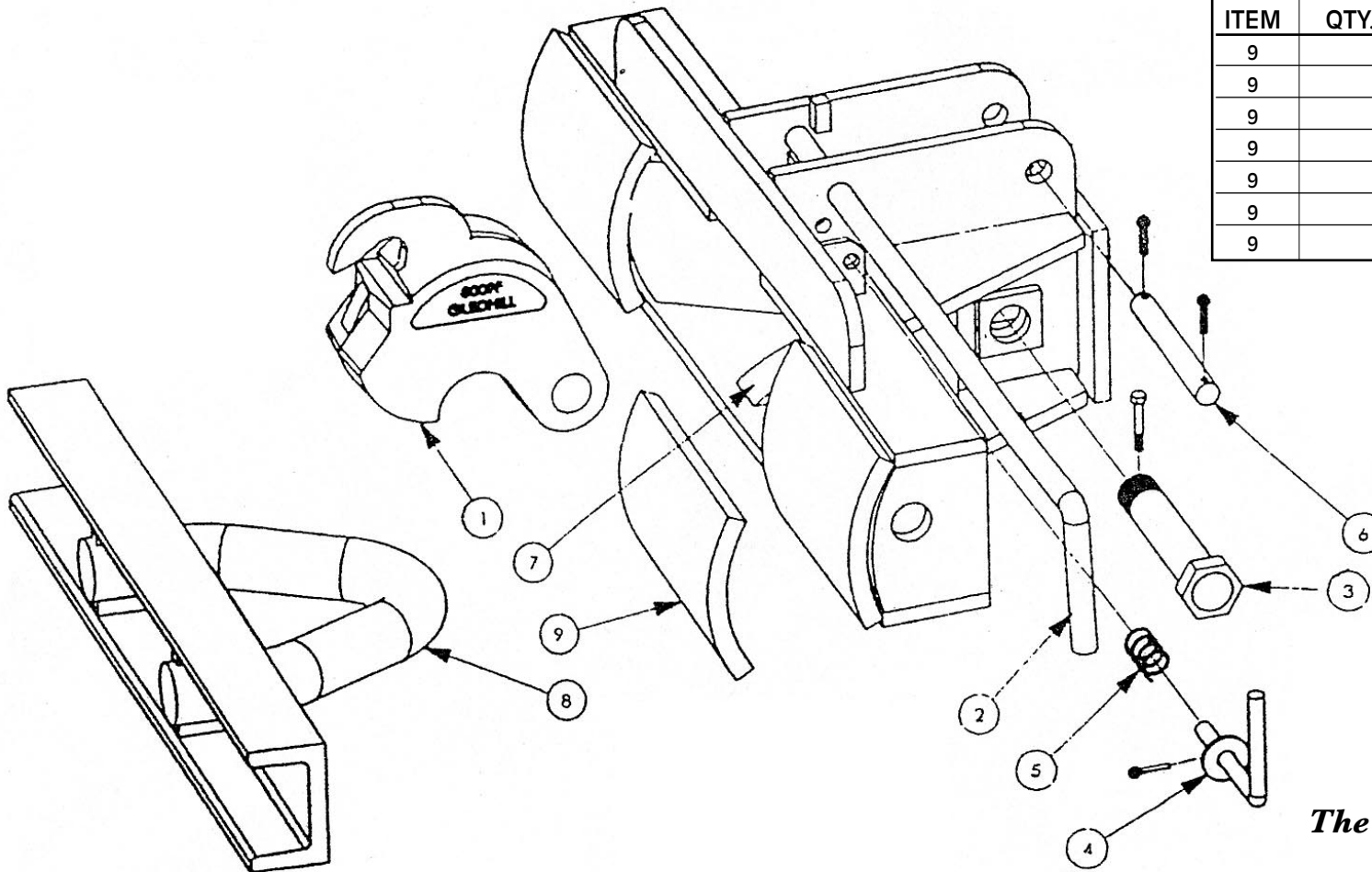
ITEM	QTY.	PART#	DESCRIPTION
1	1	8099-A	LATCH CASTING WLDMT
2	1	8105-A	LEVER WLDMT
3	1	8112-AB	LATCH PIN ASS'Y
4	1	8111-A	LOCKING LEVER ASS'Y
5	1	8116-A	COMPRESSION SPRING
6	1	5175-A55	REAR PIN W/COTTERS
7	1	8850-A2	QCP TONGUE
8	1	8061-A-B	27-1/2" CONNECTING LINK
8	1	8061-B-B	34-1/2" CONNECTING LINK

PR1, PR2, M/PR, PCL, PR3 →
RH, 1WH →

SHIM PLATES

USED TO FILL ANY EXCESS SPACE
BETWEEN THE QCP PUSH PLATES AND
THE A-FRAME CONNECTING LINK CHANNELS.

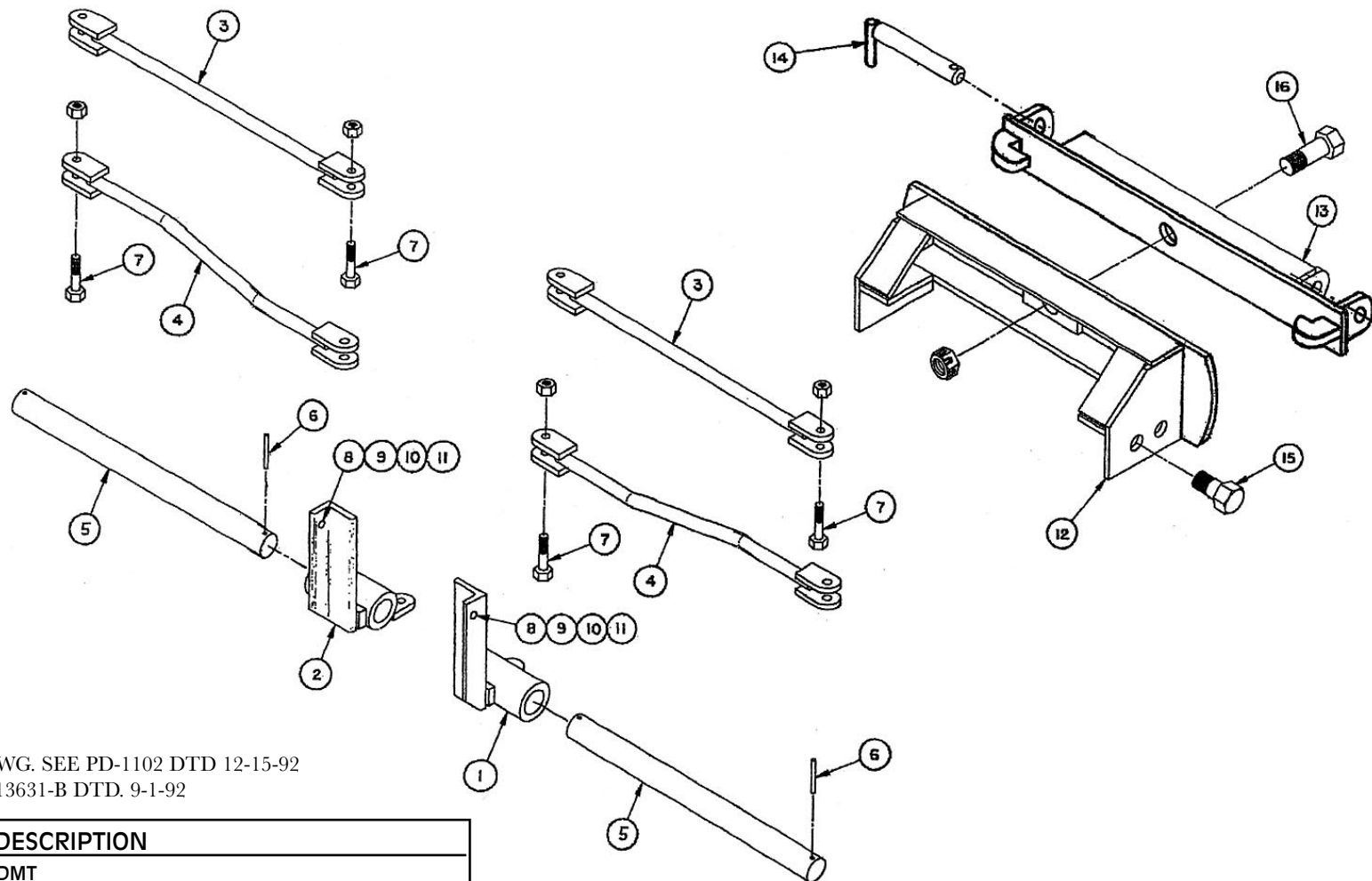
ITEM	QTY.	PART#	DESCRIPTION
9		8110-A1	5/8" SHIM PLATE
9		8110-A2	1/8" SHIM PLATE
9		5110-A3	3/16" SHIM PLATE
9		8110-A4	1/4" SHIM PLATE
9		8110-A5	3/8" SHIM PLATE
9		8110-A6	5/16" SHIM PLATE
9		8110-A7	1/2" SHIM PLATE



The Gledhill Road Machinery Co.

PARTS DRAWING FOR QCP
(QUICK COUPLE PUSH) PD-943

ALWAYS INCLUDE
SERIAL NO. OF
PLOW WHEN
ORDERING PARTS



NOTES: FOR REF. LIFT CHAIN ASS'Y DRWG. SEE PD-1102 DTD 12-15-92
FOR REF. PIVOT BAR ASS'Y. DRWG. SEE 13631-B DTD. 9-1-92

ITEM	PART #	REQ'D.	NAME/DESCRIPTION
1	13467-CLH	1	SLIDE WLDMT
2	13467-CLH	1	SLIDE WLDMT
3	13464-B	2	CONNECTING LINK FOR PR2,PC,M/PR TABLES
4	13466-B	2	CONNECTING LINK FOR PCL.,PCNL TABLES
5	5175-A163	2	PIN 1-15/16 DIA X 26 LG.
6	P-131-5	4	SPIRAL PIN-3/8 DIA. X 3 LG
7	5308-A451	4	CAPSCREW GR. 5-5/8 X 2-1/2 LG. W/FW & JAM NUT
8	5322-A3	2	SHACKLE
9	P-133-1	2	REPAIR LINK
10	10158-A3	2	LIFT CHAIN
11	A-43666	2	GRAB LINK
12	13679-C	1	PIVOT BAR, (A-FRAME PORTLAND)
13	13678-B	1	PIVOT BAR (HITCH PORTLAND) W/21" EAR HOOKUPS
13	13678-BA	1	PIVOT BAR (HITCH PORTLAND) W/21" & 30" EAR HOOKUPS
14	9637-A17	1	PUSH PIN W/LYNCH PIN
15	5308-A125	4	CAPSCREW GR.5 1-1/4 X 3-1/2 LG. W/LN
16	158822A	1	PIVOT BOLT W/SLOTTED NUT. COTTER

CHOOSE EITHER ITEM #3
OR ITEM #4, DEPENDING ON
WHICH TABLE YOU OWN.

THESE ITEMS USED ONLY
WHEN UNIT IS NOT
EQUIPPED WITH Q.C.P.

9-1-92 SUPERSEDES SAME DRWG. #/KEC 5-9-92

The Gledhill Road Machinery Co.

PARTS DRAWING FOR
LEVEL LIFT

PD-1091

OPERATION
GLEDHILL MODEL QCP QUICK COUPLING PUSH

TO COUPLE PLOW:

1. Drive into plow.
2. Back truck slightly to test lock.
3. Get out of cab, connect lift chain and engage locking pin.
4. Return to cab, lift plow and proceed to plowing operation.

TO UNCOUPLE PLOW:

1. Drive to storage position in yard,
2. Stop, relieve pressure in lift cylinder, get out of cab and go o front of truck.
3. Disconnect lift chain and disengage locking pin.
4. Return to cab and drive away to other truck use.

DISTINCTIVE FEATURES:

- 1 Equal to the best quick devices in speed, simplicity and strength--far superior to most, especially in flexibility.
2. Can be disassembled with standard tools into components for inspection, repair and replacement.
Does not require flame cutting and/or bending for disassembly.
3. This is a rugged hitch for the man who is willing to get out of the truck cab to hook up or unhook the lift chain and engage or disengage the locking pin so he can see and know what he is doing. It is not a fully automatic device where the operator may sit in the cab and push a button. It saves crawling under the truck and using pry bars, hammers and pliers. This is not a complete hitch--it does only pushing, no lifting.
4. It is a modification that can be used on almost any type of snow plow hitch. "QCP" may be specified on any new plow and hitch or it can be furnished in kit form so your existing hitch and plow can be converted to "QCP" operation.

DEGREE OF FLEXIBILITY:

- Raise 32 degrees for transport clearance
Lower 2 degrees for blade wear and road surface irregularities.
Oscillation 15 degrees total, to lift heel of plow during transport and conform to road surface irregularities.

Permissible misalignment in hitching: Loop at rear of plow can be high or low through a range of six (6) inches.
Truck can be right or left if center through range of seven (7) inches.

The Gledhill Road Machinery Co.

OPERATING INSTRUCTIONS FOR
GLEDHILL MODEL QCP
(QUICK COUPLING PUSH) **INS-250**