

Compact Conductive Level Switch



measuring
•
monitoring
•
analyzing

NEK



- Compact Design
- No Moving Parts
- Excels in Dirty, Low Viscosity, or Aggressive Media
- Transistor Switch or Relay Outputs
- PPS or Polypropylene Bodies
- 316-Ti SS Electrodes
- Max. Pressure: 290 PSIG
- Media Temperature Range: -10...185 °F



KOBOLD companies worldwide:

ARGENTINA, AUSTRALIA, AUSTRIA, BELGIUM, BULGARIA, CANADA, CHILE, CHINA, COLOMBIA, CZECH REPUBLIC, EGYPT, FRANCE, GERMANY, HUNGARY, INDIA, INDONESIA, ITALY, MALAYSIA, MEXICO, NETHERLANDS, PERU, POLAND, REPUBLIC OF KOREA, ROMANIA, SINGAPORE, SPAIN, SWITZERLAND, TAIWAN, THAILAND, TUNISIA, TURKEY, UNITED KINGDOM, USA, VIETNAM

KOBOLD Instruments, Inc.
1801 Parkway View Drive
Pittsburgh, PA 15205
☎ Main Office:
1.800.998.1020
1.412.788.4890
✉ info@koboldusa.com
www.koboldusa.com



Description

The KOBOLD NEK compact conductive level switch is an excellent choice for small tank level monitoring. It senses level by applying a low AC voltage to a pair of 316-Ti stainless steel electrodes. In a sufficiently conductive liquid, a small current will flow between the electrodes, resulting in switch activation. The NEK is available with either PPS or polypropylene bodies. The design has no moving parts so it excels in dirty liquids with a high solids content. The SS electrodes also enable it to handle many compatible chemicals and aggressive media in use today.



Technical Details

Wetted Materials:

- Housing:** PPS or Polypropylene
- Electrodes:** 316-Ti Stainless Steel

Maximum Pressure:

- PPS Body:** 290 PSIG
- Polypropylene Body:** 87 PSIG

Temperature Range:

- PPS Body:** -10...185 °F
- Polypropylene Body:** -10...140 °F

Min. Media Conductivity: 100 µS/cm

Switching Delay: 0.5 seconds

Power Requirements: 18-29 V_{DC}

Switch Characteristics:

Open Collector: Normally open (dry), PNP or NPN depending on model, 32 V_{DC} /100 mA max. short-circuit protected

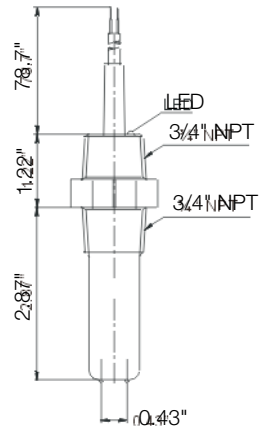
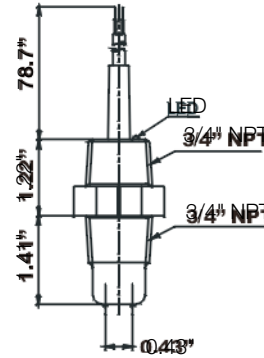
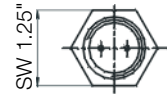
SPDT Relay: 1 Amp max. @ 30 V_{DC} max.

Electrical Protection: NEMA 6 / IP68

Dimensions

1-1/2" Immersion Length

3" Immersion Length



Order Details (Example: **NEK-1136 N20 C**)

Immersion Length	Switch Type	Body Material		Fitting	Electrical Connection
		PPS	Polypropylene		
1-1/2"	NPN, Open Collector	NEK-1136..	NEK-1236..	..N20.. = 3/4" NPT	..C = 6 ft. PVC Cable
	PNP, Open Collector	NEK-2136..	NEK-2236..		
	SPDT Relay	NEK-3136..	NEK-3236..		
3"	NPN, Open Collector	NEK-1173..	NEK-1273..		
	PNP, Open Collector	NEK-2173..	NEK-2273..		
	SPDT Relay	NEK-3173..	NEK-3273..		