



lado2 - pb2 - 3 choruses

As time goes by

Herman Kupfeld

♩ = 105

Fm7 B^b7 B^bm7 E^b7 Am7(b5) D7(b9) Gm7 C7(b9)



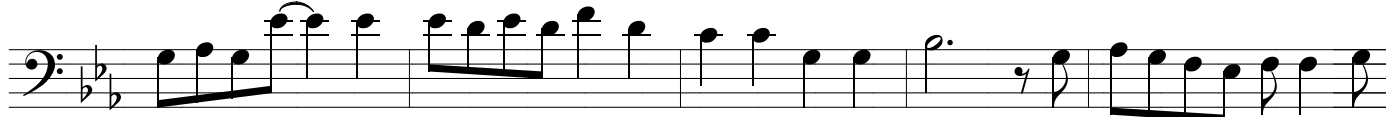
F7 Fm7 B^b7 E^b7M C7 Fm7 B^b7 E^bm7 A^b7



Dm7(b5) G7(b9) Cm7 C7 Fm7 Adim7



Cm7 A^b7 F7 B^b7 B^bdim7 Fm7 B^b7



E^b7M E^b7 Am7(b5) D7(b9) Gm7 C7(b9) F7 Gm7 C7



Fm7 B^b7 E^b7M (C7)

