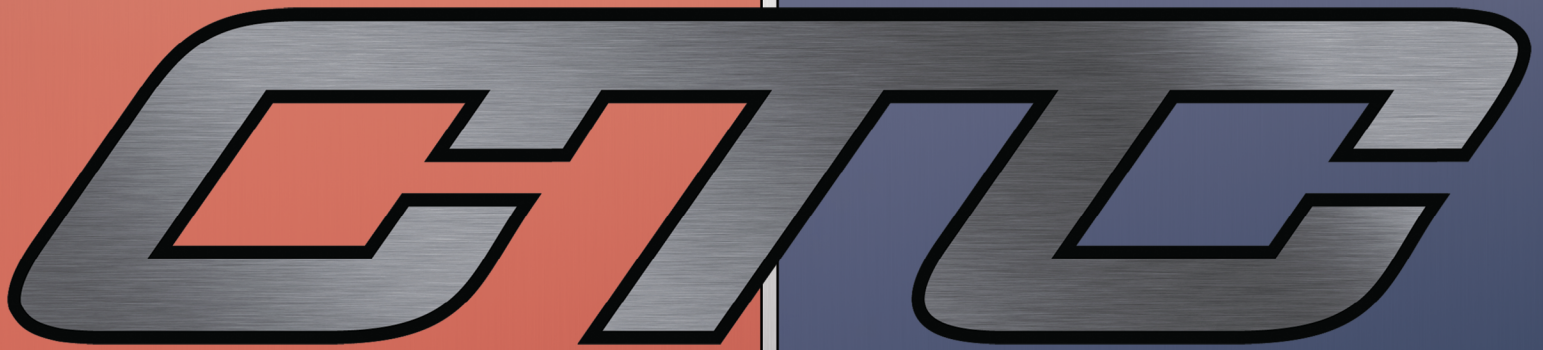


SHORT FORM CATALOG



INDUSTRIAL
MONITORING

VIBRATION
SOLUTIONS



VIBRATION ANALYSIS HARDWARE



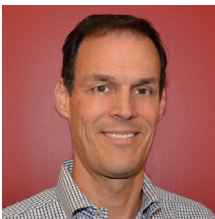
PROTECTION & RELIABILITY INSTRUMENTS

Who We Are

At CTC, we are a family-owned and operated business passionate about providing the best quality products backed by excellent customer service. We are the industry leader in quick delivery for stock and built-to-order products. All CTC products are proudly made or assembled in the U.S.A. We always honor our best-in-class warranties, and our customer service seeks to provide the best customer experience in the world.

What We Do

CTC is the world leader in the design and manufacture of industrial accelerometers, piezo velocity transducers, 4-20 mA vibration sensors, and proximity probes as well as all related mounting hardware, cabling, and junction boxes. Our products enable efficient vibration monitoring for predictive maintenance in a wide variety of industries. Industries served include cement, mining, petrochemical, food & beverage, auto, steel, wind, paper, power generation, water & wastewater treatment, pharmaceutical, hospitals, bottling, and more. Our mission is to offer the most extensive collection of accelerometers and vibration analysis hardware products, as well as the tools for installation. Our products are compatible with multiple third-party data collectors and online monitoring systems.



A black ink signature of Todd Cook.

**TODD
COOK**

Co-Owner



A black ink signature of Laura Cook.

**LAURA
COOK**

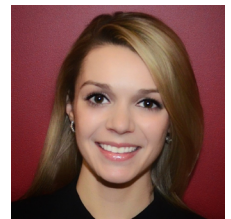
Co-Owner



A black ink signature of Andrew Cook.

**ANDREW
COOK**

Director of Sales



A black ink signature of Charlotte Cook.

**CHARLOTTE
COOK**

Director of Marketing

CONTENTS

CTC	4
Multipurpose Accelerometers.....	4
Ultrasound Sensor	5
High-Temperature Accelerometers	5
Wind Turbine Accelerometers	6
Hazardous Rated Accelerometers	7
Temperature & Vibration Sensors	7
Triaxial Accelerometers.....	8
Cables.....	9
Connectors.....	10
Adapters & Accessories	12
Junction Boxes.....	14
Mounting Hardware	16
PRO	19
4-20 mA	19
Signal Conditioners	20
Proximity Probes.....	21
Wireless Vibration Transmitter	22
Molded Accelerometers	22



VIBRATION ANALYSIS HARDWARE



PROTECTION & RELIABILITY INSTRUMENTS

Product Offerings

At CTC, we offer two comprehensive product lines to meet your industrial vibration monitoring needs. Our products reflect the input from customers and distributors around the world and are designed and tested to meet the real-world demands of plant environments. We believe our products are the highest quality on the market, which is why we back each product line with our best-in-class warranties.



The CTC product line features vibration analysis hardware for heavy industry.

All CTC products are backed by our unconditional lifetime warranty. If any CTC product should ever fail, we will repair or replace it at no charge.



The PRO line offers 4-20 mA vibration monitoring solutions and proximity probes.

All PRO products are backed by a lifetime warranty on materials and workmanship. PRO will repair or replace any of our products as long as the product was not subjected to misuse, neglect, natural disasters, improper installation, or modification.

Refund Policy

All stock products qualify for a full refund if returned in new condition within 90 days of shipment. Built-to-order products qualify for a 50% refund if returned in original condition within 90 days of delivery. Custom products are quoted and built specifically to the requirements of the customer, which may include completely custom product designs or private-labeled versions of standard products for OEM customers. Custom products ordered are non-cancellable, non-returnable, and non-refundable.

CTC offers a complete line of industrial accelerometers. Our ruggedized industrial accelerometers are available in single axis, biaxial, and triaxial designs. Many configurations allow for either top or side exit options. Side exit configurations are suitable for installations in areas where height is an issue. CTC's industrial accelerometers support a diverse set of applications with sensitivity values ranging from 10 mV/g to 1000 mV/g. Dual output configurations allow for vibration and temperature outputs.

Multipurpose Accelerometer, Top Exit



STANDARD SIZE



COMPACT SIZE



MINI SIZE

Multipurpose Accelerometer, Side Exit



STANDARD SIZE



COMPACT SIZE



MINI SIZE



Backed by our Unconditional Lifetime Warranty!

ACCELEROMETERS

Multipurpose Accelerometer, Integral Cable Options



**STANDARD
INTEGRAL**



**ARMORED
INTEGRAL**

ULTRASOUND

Ultrasound Sensor



Sensitivity: 100 mV/g
Resonant Peak: 44 kHz

UEB330

High frequency ultrasound sensor with high amplitude resonance peak for stress wave measurement techniques and IEPE amplifier technology.

HIGH-TEMPERATURE

High-Temperature Accelerometers



AC207
100 mV/g
Max Temp: 325° F (162° C)



AC208
100 mV/g
Max Temp: 325° F (162° C)



CM362-7A
50, 100 mV/g
100 mV/in/sec
Max Temp: 650° F (343° C)



Backed by our Unconditional Lifetime Warranty!

Power generation is a critical need in today's world. Uptime is the primary concern, and to maintain power generation, the machines need to be running. CTC's goal is to improve reliability with permanently mounted accelerometers to monitor wind turbine vibration and provide early detection for potential failure. CTC has multiple options to fit your specific application. Low-frequency accelerometers are ideal for main bearing and other slow-speed applications. Our multipurpose accelerometers are best suited for gearboxes and generators.

Accelerometers for Wind Turbine Applications



WT135

Low frequency wind
turbine accelerometer
500 mV/g



WT136

Low frequency wind
turbine accelerometer
500 mV/g

Molded Accelerometer



MEB212

Lightweight molded accelerometer
5 kVAC protection
100 mV/g
10 ft integral cable

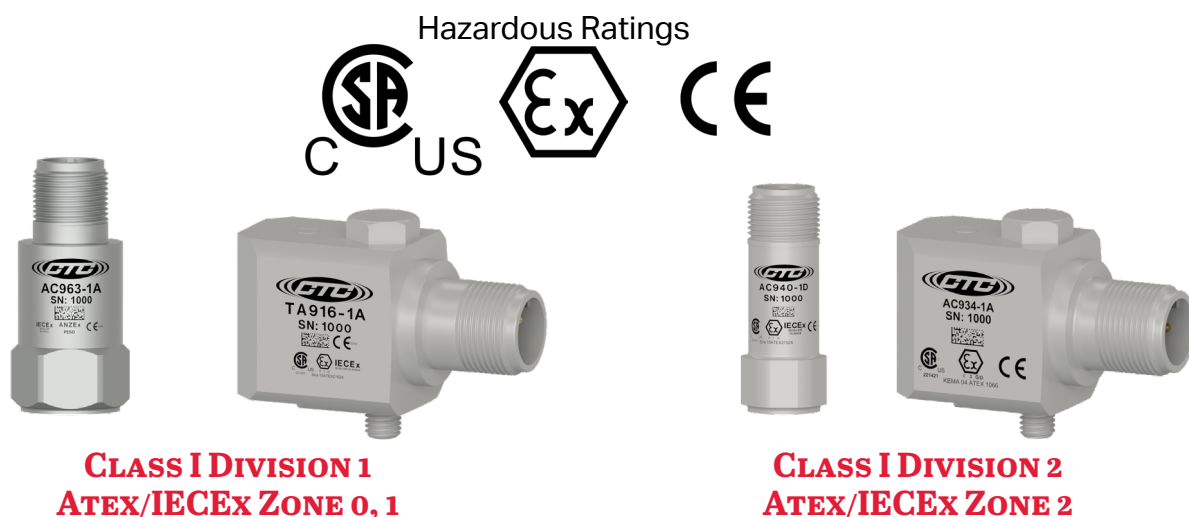


Backed by our Unconditional Lifetime Warranty!

HAZARDOUS RATED

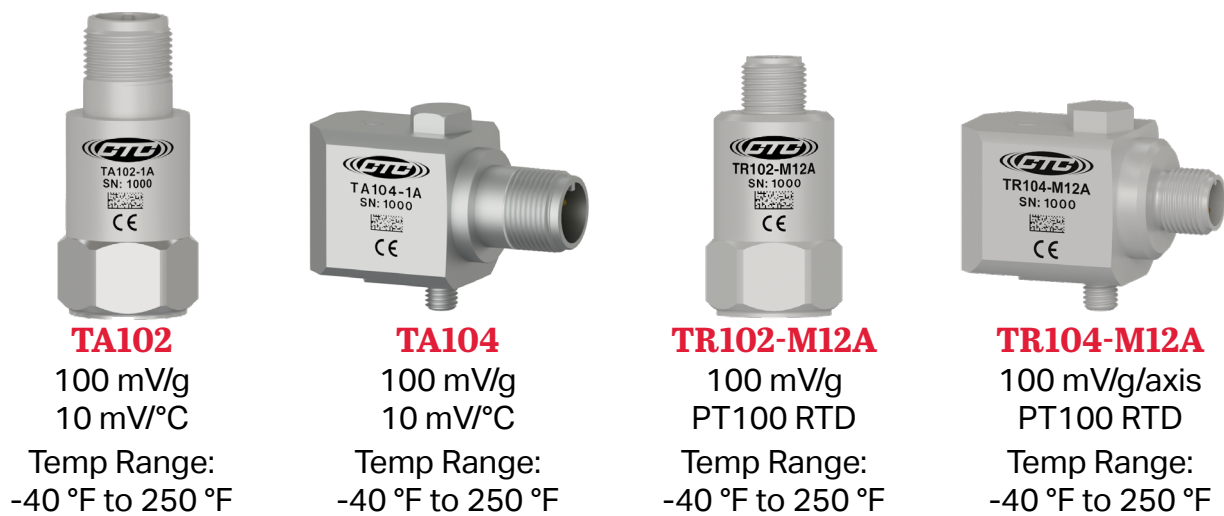
Hazardous Rated Accelerometers

CTC offers a variety of single axis, biaxial, triaxial, dual output, and low capacitance sensors certified for Class I Division 2 (ATEX/IECEX Zone 2), as well as intrinsically safe protection methods under Class 1 Division 1 (ATEX/IECEX Zone 0/1).



TEMPERATURE & VIBRATION

Dual Output Temperature and Vibration Sensors



Backed by our Unconditional Lifetime Warranty!

TREA330 Triaxial Accelerometers



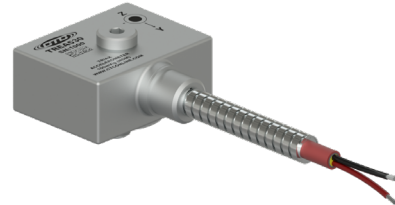
SIDE EXIT

100 mV/g



INTEGRAL

100 mV/g



**ARMORED
INTEGRAL**

100 mV/g

Other Popular Triaxial Accelerometers



AC115

Low cost 4 pin
100 mV/g



AC119

Biaxial with X & Z axis
100 mV/g



AC155

Low cost 4 pin
Modal/ODS
100 mV/g



AC230

Premium 4 pin
100 mV/g



AC360

Modal/ODS
100 mV/g



AC365

Modal/ODS
100 mV/g



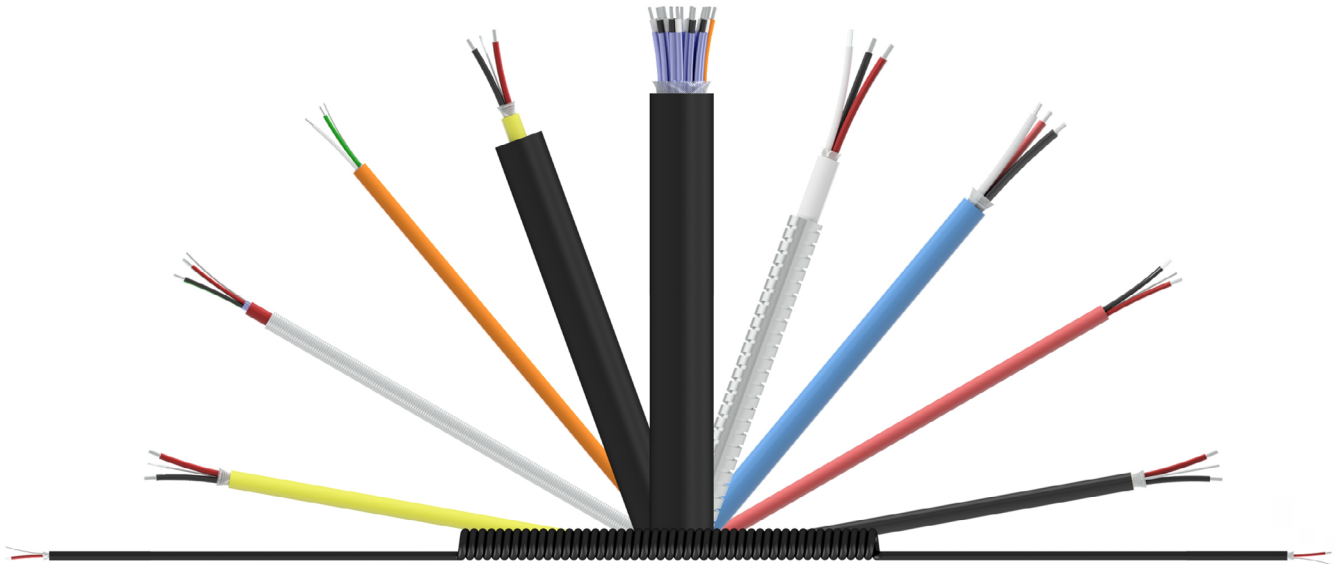
TRCA330

Compact 4 pin
10 mV/g



Backed by our Unconditional Lifetime Warranty!

CTC Offers a Variety of Cable Options for All Application and Environmental Criteria



JACKET TYPES

- Fluorinated ethylene propylene (FEP)
- Polyurethane
- Lightweight Polyurethane
- PVC
- Thermoplastic Elastomer (TPE)
- Low Smoke Zero Halogen

ARMOR OPTIONS

- Stainless Steel Braided Sheathing
- Stainless Steel Armor
- Hydraulic Hose Armor

CONDUCTOR OPTIONS

- 2 Conductor
- 3 Conductor
- 4 Conductor
- 6 Conductor
- 8 Pair Multi Conductor
- 12 Pair Multi Conductor
- 16 Pair Multi Conductor
- 12 Triad Multi Conductor

HAZARDOUS ZONE OPTIONS

Class 1 Division 2 approved cables



Backed by our Unconditional Lifetime Warranty!

CTC Offers a Variety of Standard and Specialty Connectors for Every Possible Application

CTC sensor connectors support temperatures ranging from -58 ° F to 325 ° F (-58 °C to 163 °C). A wide selection of connectors supporting IP (Ingress Protection) ranging from IP66 to IP68 is available.

A SERIES: 2 OR 3 SOCKET MIL STYLE (C-5015) COMPATIBLE CONNECTOR



Connector options

- Standard
- Right angle
- Hydraulic hose

Material options

- Polycarbonate
- Polyurethane
- Nylon
- Polyphenylene sulfide (PPS)

D SERIES: 2 OR 3 SOCKET MIL STYLE (C-5015) COMPATIBLE CONNECTOR



Connector options

- Standard
- Grounded to sensor case
- Right angle
- Backshell
- Backshell for Class 1 Division 2
- Molded strain relief
- Bending strain relief

Material options

- Polyurethane

J SERIES: 2 OR 4 SOCKET MINI-MIL CONNECTOR



Connector options

- Standard
- Strain relief
- Class 1 Division 2 rated

Material options

- Polycarbonate
- Nylon
- Polyurethane

M SERIES: 5 SOCKET M12 MOLDED CONNECTOR



Connector options

- Available in 2, 3, 4, and 5 live pin configurations

Material options

- Nylon
- Polycarbonate
- Polyurethane

V SERIES: VITON BOOT



Connector options

- Available in 2 or 3 live pin configurations

Material options

- Viton seal with
 - Nylon insert option
 - PPS insert option

Many other connector options are available. Please [visit our website](#) for more details.



Backed by our Unconditional Lifetime Warranty!

Data Collector Cord Sets

CTC offers a variety of OEM replacement data collector cables and portable cable options for all major vibration analyzer manufacturers. Data collector cables are available in both coiled and straight cable options. Replacement cable assembly and adapters are available for every major data collector including:

ACOEM, ADASH Ltd, GE/Commtest, Azima/DLI, Emerson/CSI, Erbesd, GE/Bently Nevada, Pruftechnik, Rockwell/Entek, Schenck Trebel, SDT, SEMAPI, SKF, and SPM.

Popular Data Collector Connectors



EMERSON/CSI C555

Channel A acceleration
input to CSI 2130 & 2140



SKF C66

Channel A input for
CMXA50, 70, 75 & 80



ACOEM C494

Single channel input for
Falcon data collectors



PRUFTECHNIK C618

Single channel input to
VIBXpert II



ROCKWELL/ENTEK C22

Single channel input for
dataPAC & enPAC



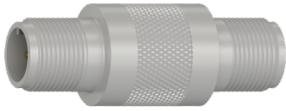
GE/COMMTEST C416

Triaxial input X, Y and Z for
vb6 & vb8



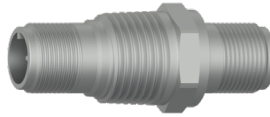
Backed by our Unconditional Lifetime Warranty!

Popular Adapters



CB901-1A

2 pin MIL to 2 pin MIL
in-line feed thru



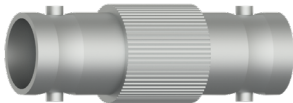
CB903-1A

2 pin MIL to 2 pin MIL
bulk head feed-thru,
1/2-NPT



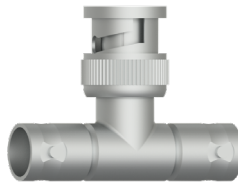
CB908-1A

2 pin MIL to BNC plug
adapter with molded
reinforcement



CB910-1A

In-line BNC jack to
BNC jack adapter



CB911-1A

BNC tee adapter



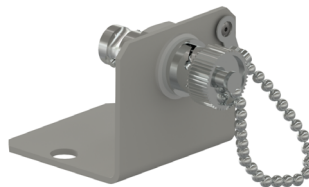
CB911-3A

In-line BNC plug to
BNC plug adapter



CB912-1A

2 socket MIL to BNC
plug adapter



CB917-1A

BNC jack feed-thru
connector with
mounting bracket



EMPP

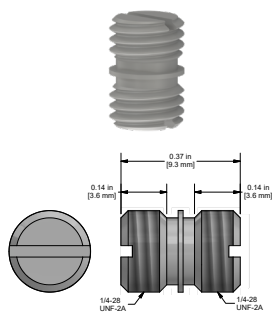
BNC jack
measurement point
with protective cover



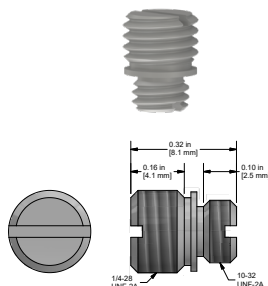
Backed by our Unconditional Lifetime Warranty!

ADAPTERS & ACCESSORIES

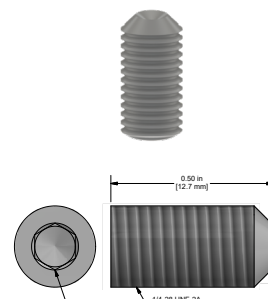
Specialty Mounting Adapters & Studs



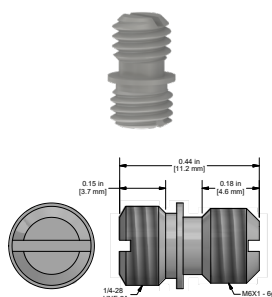
MH108-1B
1/4-28 to 1/4-28
mounting stud
stainless steel



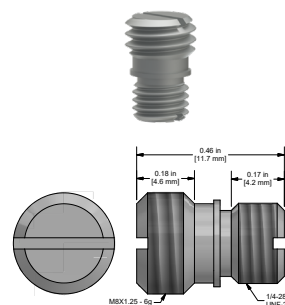
MH108-3B
1/4-28 to 10-32
adapter stud
stainless steel



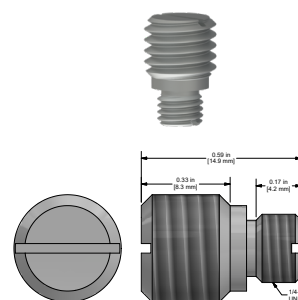
MH108-4B
1/4-28 set screw
1/2 in. length
stainless steel



MH108-5B
1/4-28 to M6x1
adapter stud
stainless steel

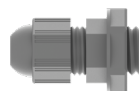


MH108-6B
1/4-28 to M8
adapter stud
stainless steel

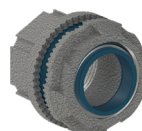


MH108-7B
1/4-28 to M10
adapter stud
stainless steel

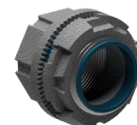
Junction Box Accessories



JB903-1A
Cord grip for use with
cable diameter
0.118 in. - 0.256 in.



JB938-1A
1 in. rigid body
conduit fitting



JB938-2A
1 1/4 in. rigid body
conduit fitting



Backed by our Unconditional Lifetime Warranty!

At CTC, we offer the widest variety of junction boxes in the world. Our junction box solutions allow for the monitoring of remotely mounted vibration sensors, which would be otherwise restricted to human access due to safety considerations. Also offered is a selection of low-cost cable termination boxes that allow multiple measurement points to be routed to a single location to gather data. Many CTC junction boxes offer continuous output options for direct interface to online monitoring systems.

iBox Series

Fully featured NEMA 4X (IP66) rated vibration junction box with IEPE sensor condition indicator lights and convenient interface with fold-forward panel for easy wiring.



JB100/JB200

Allows for up to 12 channels for single axis, biaxial, or triaxial outputs



JB100 - 24-48 Channel

Available in 24, 36, or 48 channels



JB300 SLOPE TOP

Available in 4, 6, 8, 10, or 12 channels

Switch Boxes



SB102/SB202

Fiberglass or stainless steel switch boxes available in 4, 6, 8, 10, or 12 channels



SB142/SB242

Fiberglass or stainless steel switch boxes for dual output available in 4, 6, or 8 channels



SSB-MODX

12 channel DIN rail mountable switch module subassembly



Backed by our Unconditional Lifetime Warranty!

Cable Termination and MAXX Boxes



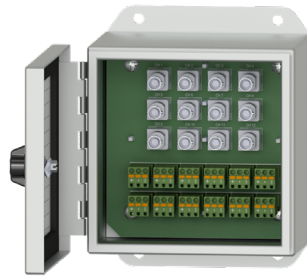
CT101

Cable termination boxes for up to 4 channels



MMX-MOD3

DIN rail mountable module for up to 3 channels



MX102/MX202

Fiberglass or stainless steel MAXX boxes available in 1-12 channels



MX502

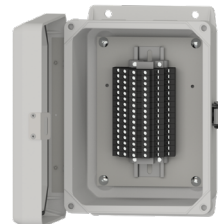
Aluminum Mini-MAXX boxes available in up to 4 channels

Cable Reduction Boxes



CR102/CR202

Fiberglass or stainless steel cable reduction boxes for 8, 12, and 16 channels
-58 °F to 180 °F
(-50 °C to 82 °C)



CRHT102/CRHT202

Fiberglass or stainless steel high temperature
(-40 °F to 212 °F/
-40 °C to 100 °C)
cable reduction boxes for 12 and 16 channels

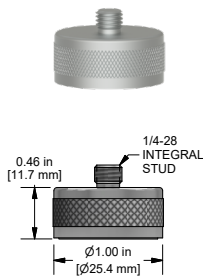


Backed by our Unconditional Lifetime Warranty!

CTC offers a variety of adhesive and stud mounted sensor mounting pads. Magnet mounting pad options for portable field applications are also available, including flat and two rail mounting configurations. Additionally, we offer specialty mounting accessories for fin-cooled motors as well as a variety of extension adapters, which allow access to traditionally hard-to-reach bearing locations. Visit our website for a complete list of our mounting hardware solutions.

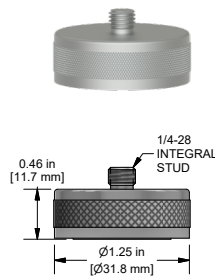
Rare Earth Magnetic Bases

made from Neodymium Iron Boron



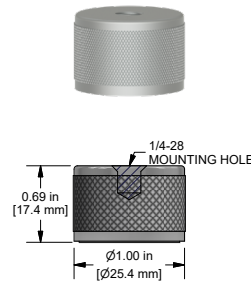
MH103-1B

Flat surface
pull strength:
40lbs/18kg



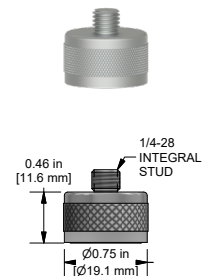
MH104-1B

Flat surface
pull strength:
60lbs/27kg



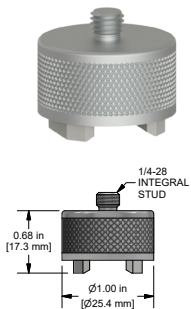
MH122-1A

Flat surface
pull strength:
40lbs/18kg



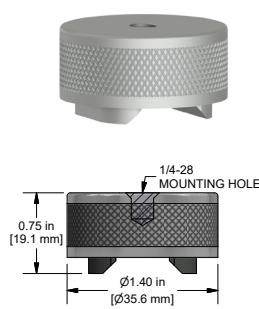
MH136-1A

Flat surface
pull strength:
25lbs/11kg



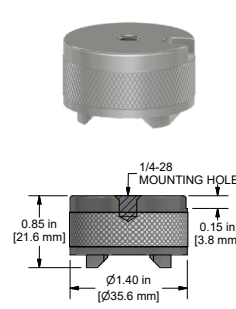
MH112-1A

Multipurpose
pull strength:
30lbs/14kg



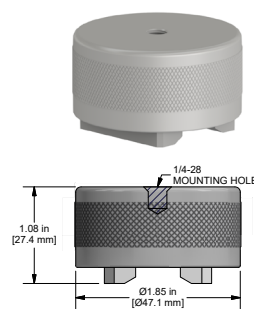
MH114-3A

Multipurpose
pull strength:
50lbs/23kg



MH114-3T

Multipurpose
pull strength:
50lbs/23kg



MH115-2A

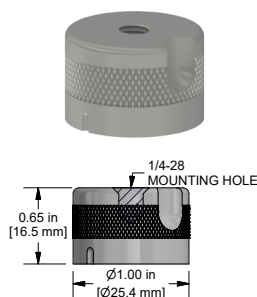
Multipurpose
pull strength:
95lbs/43kg



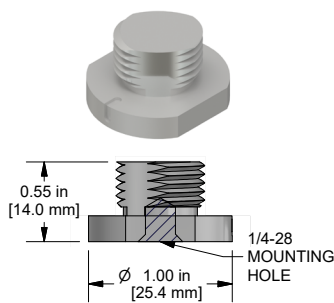
Backed by our Unconditional Lifetime Warranty!

MOUNTING HARDWARE

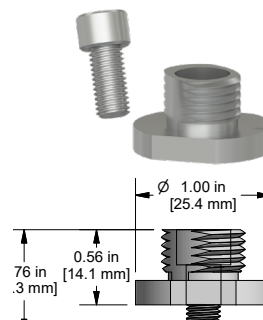
Accelerometer Quick Disconnects



MH107-1A

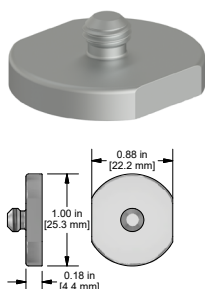


MH107-1B

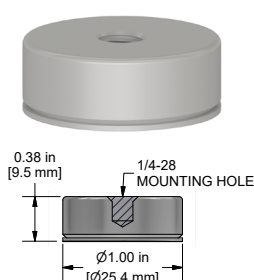


MH107-2B

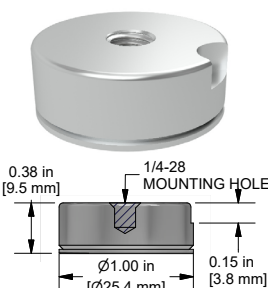
Mounting Pads/Magnet Targets



MH101-1B



MH130-1A

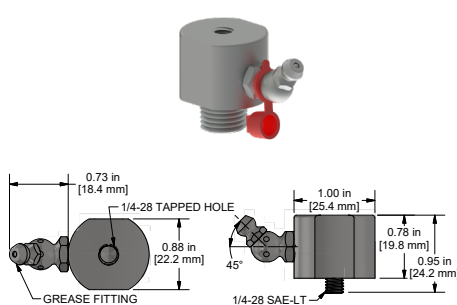


MH130-1T



MH133-1A

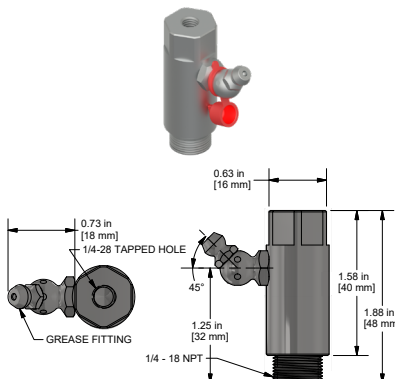
Zerk and Specialty Mounting Adapters



MH134

Zerk Adapter

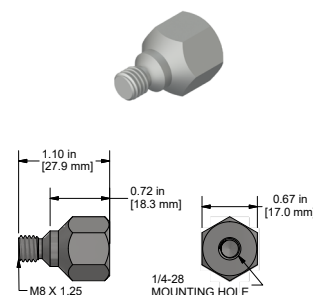
Available mounting threads:
1/4 NPT, 1/8 NPT



MH134-4B

Zerk Adapter

Available mounting threads:
1/4 NPT



MH143-1A

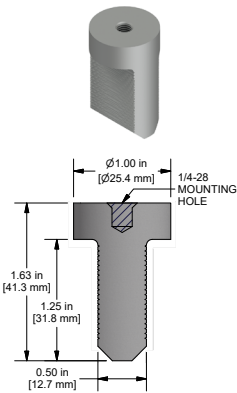
Hex head mounting stud
for accelerometers
SPM Compatible



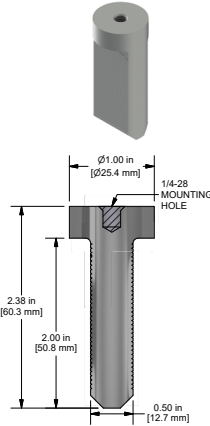
Backed by our Unconditional Lifetime Warranty!

Motor Fin Probe Pads

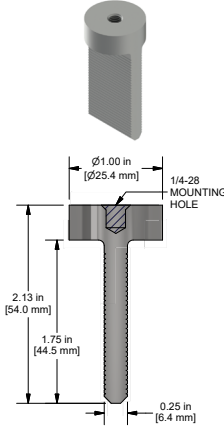
Take measurements from hard-to-reach places.



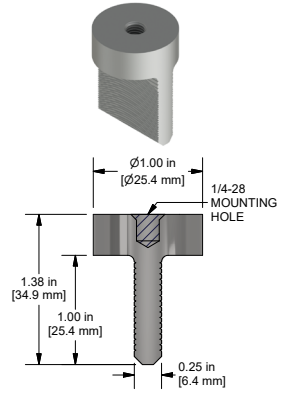
MH118-1A



MH118-2A



MH118-3A



MH118-4A

Our fin mount probes are perfect for narrow measurement points in motors, turbines, and other machinery. Fin mounts can be used for portable route measurements or permanently mounted accelerometers.

Accelerometer Installation Tool Kit



MH117 SERIES

Spot face and pilot hole drill in one operation.
Option for taps and ratcheting tap handle included.

High speed steel end mill tool kits

Available thread sizes	Available end mill diameters
1/4-28	5/8 in., 1 in., 1 1/4 in.
10-32	5/8 in., 1 in.
M5x.8	5/8 in.
M6x1	1 in., 1 1/4 in.
M8x1.25	1 1/4 in.

Carbide tipped end mill tool kits

Available thread sizes	Available end mill diameters
1/4-28	5/8 in., 1 in., 1 1/4 in.
M8x1.25	1 1/4 in.



Backed by our Unconditional Lifetime Warranty!

CTC offers a wide array of 4-20 mA output solutions for industrial applications. CTC's standard 4-20 mA loop-powered vibration sensors are available with velocity as well as acceleration output measurement options. CTC's loop-powered sensor line also includes a dual output option, with both 4-20 mA output and dynamic output configurations in one sensor. Other options include 24 VDC powered transmitters that power standard IEPE accelerometers and convert the vibration to a powered 4-20 mA signal. These transmitters also offer a 4-20 mA output for temperature when coupled with CTC dual output vibration and temperature sensors.

Velocity & Acceleration

LP200 Series sensors for velocity and LP300 Series sensors for acceleration come in top or side exit connector, integral cable, and armored integral cable options. LP400 Series sensors for dual output come in top, integral, and armored integral exit options.

LP200

Velocity
output



TOP EXIT

LP300

Acceleration
output



TOP EXIT

LP400

Dual output



TOP EXIT



SIDE EXIT



SIDE EXIT



INTEGRAL OPTIONS



Backed by our Best-in-Class Warranty!



SC300 SERIES

USB configurable,
dual channel vibration
plus temperature



SC900 SERIES

Class 1, Division 2
approved, 4-20 mA
vibration transmitters

Signal Conditioner Enclosures

CTC's Signal Conditioner Enclosures are turnkey solutions, which come fully populated with signal conditioners, power supply, and terminal blocks for sensor terminations. The signal conditioners are available pre-configured based on customer-specific requirements. Terminal blocks are provided for easy sensor terminations. These terminal blocks are pre-wired to the signal conditioners, and the outputs from the signal conditioners are wired to terminal blocks for integration into PLC/DCS systems.



XE151

1-12 channel
enclosure



MVR1000

1-4 channel
enclosure



XE550 SERIES

1-8 channel
enclosure with up
to 16 total IP based
outputs



Backed by our Best-in-Class Warranty!

PROXIMITY PROBES

CTC offers a complete line of proximity probe systems designed and built to endure the harshest industrial environments. Proximity probes systems are available with probe tip sizes in 5mm FFV, 8mm, 11mm, and 25mm diameters with Bently compatible options. The variety of probe sizes offered allows accurate and precise machinery measurements for applications involving radial dynamic, axial rotor position, and thermal case expansion measurements.

PROBE TIP OPTIONS

5mm FFV, 8mm, 11mm, 25mm

Standard and armor cable options available

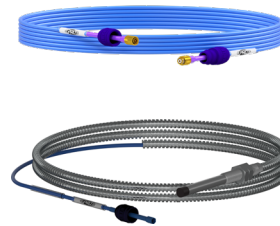
PRO line & Bently compatible offerings



Complete Your Prox Probe Assembly



DRIVERS



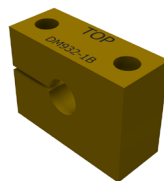
**EXTENSION
CABLES**

Proximity Probe Accessories



ENCLOSURES

Fiberglass and stainless steel enclosures
1-6 channels
Powered and 4-20 mA options available



**MOUNTING
BLOCKS**



**REVERSE MOUNT
HOUSING**



Backed by our Best-in-Class Warranty!

Wireless Vibration Transmitter



WA100-BT

Bluetooth® Low Energy 5.0

Compatible with AC312/AC314 low power accelerometers

Captures a dynamic signal at a user specified sampling rate for a user specified sample time

Estimated 5+ years of battery life when taking 2 or fewer scheduled measurements daily

User configurable 1 - 40ks/sec,
F-max = 15,652 Hz ((40ks/s) / 2.56)

Completely customizable monitoring software —
No subscription required

MOLDED ACCELEROMETERS

Lightweight Molded Accelerometer



MCB211

High frequency
10 mV/g



MDB211

High frequency
50 mV/g



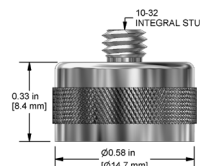
MEB210

General purpose
100 mV/g



MEB211

High frequency
100 mV/g



SUGGESTED MOUNTING HARDWARE

MH154-1B
Flat surface
pull strength:
15lbs/7kg



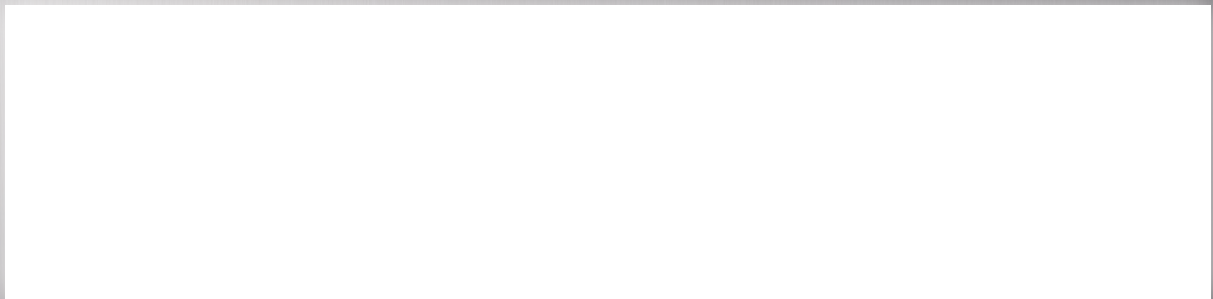
Backed by our Best-in-Class Warranty!



VIBRATION ANALYSIS HARDWARE



PROTECTION & RELIABILITY INSTRUMENTS



WHEN RELIABILITY MATTERS
CONNECT TO CONFIDENCE