

D-Pro V46 series Gauge Root Valves

D-Pro Gauge Root Valves offer a safe way of positioning gauges and installing pressure switches.

Features

- 1/2 in. and 3/4 in. male to 1/2 in. female end connections.
- 1/2 in. female gauge ports standard.
- Minimum schedule 160 pipe wall on valve inlet.

Ordering Information and Technical Data

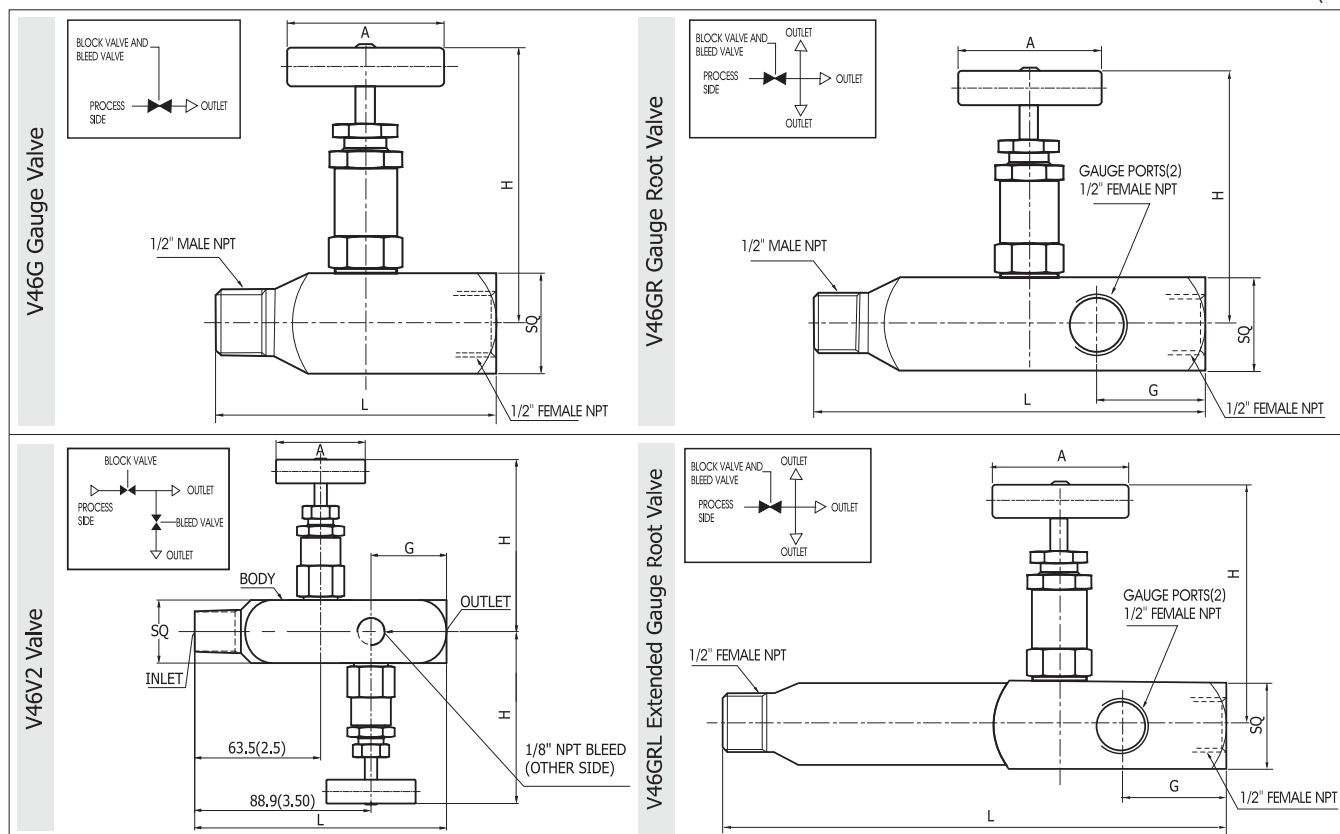
Valve Ordering Number	End Connection Male to Female NPT	Orifice mm (in.)	Body Length mm (in.) L	MAX. OPEN H	SQ	G	A
V46G-8N-S	1/2 to 1/2 in.	5.0 (.20)	90.0 (3.54)	85.9(3.38)	32(1.26)	38.10(1.50)	50.00(1.97)
V46GR-8N-S	1/2 to 1/2 in.		136.0 (5.35)				
V46GR-12N8N-S	3/4 to 1/2 in.		136.0 (5.35)				
V46GRL-8N-S	1/2 to 1/2 in.		184.0 (7.24)				
V46GRL-12N8N-S	3/4 to 1/2 in.		184.0 (7.24)				
V46V2-8N-S	1/2 to 1/2 in.		127.0 (5.00)				

- V46GRL has an extended 4.8 inch of pipe insulation.
- V46 series uses Medium Bonnet Valve: Orifice 5.0 mm (.196in.)

How to order

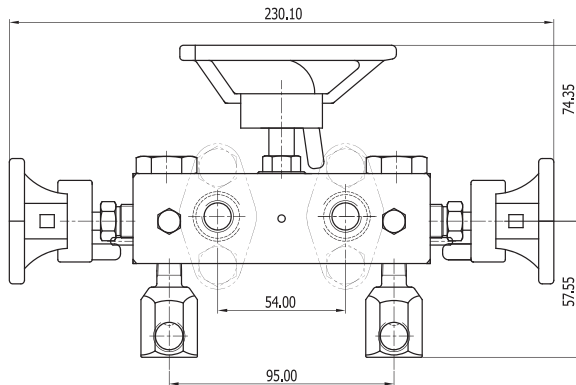
- To order Grafoil option, insert -GF in the ordering number. i.e., V46G-8N-**GF**-S
- To order sour gas service valve, insert -SG in the ordering number. i.e., V46G-8N-**GF-SG**-S

Unit: mm (in.)

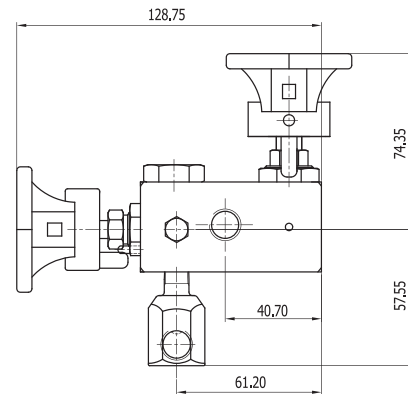


Double Purge-Blowback Manifold and Single Purge-Blowback Manifold

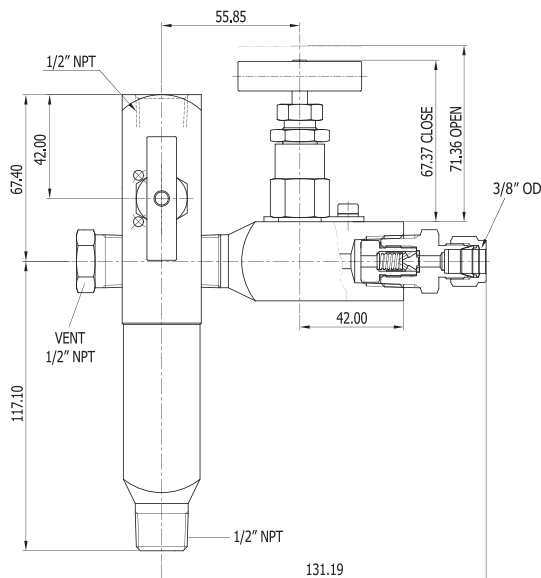
Double Purge-Blowback Manifold
DKM7-TV-AF1F2-#2(#6)-S
Connected with DKM-GU3M-T-S-AF1



Single Purge-Blowback Manifold
DKM6-TV-F2F2-#2(#6)-S



Pressure Rating with Teflon seat: 2,500psig @100°F (38°C)
All wetted & exposed parts are ASTM A276/A479 type 316
TV: Teflon seat with Viton o-ring seal is Standard
TK: Teflon seat with Kalrez o-ring seal is Optional
Capillary Plug #2: 3.2SCFH Air@10 psig
Capillary Plug #6: 0.40SCFH Air@10 psig
Gauge Port: 1/8" MNPT to 1/4" FNPT

D-Pro[®] Gauge Root Valves**V46 Series****Chemical Injection Kit****Chemical Injection Kit: CIK-8N-SA**

- Pressure Rating: 6,000psig@100°F (38°C)
- Body & Bonnet Material: ASTM A276/A479 type 316
- Stem Material: ASTM A276/A479 type 316
- Stem: Non-rotating
- Stem Packing: PTFE
- Spring Material: SS302
- Nominal Cracking Pressure: 5 psig

Safe Valve Selection

The selection of a valve for any application or system design must be considered to ensure safe performance. Valve function, valve rating, material compatibility, proper installation, operation and maintenance remain the sole responsibility of the system designer and the user. Dk Tech accepts no liability for any improper selection, installation, operation or maintenance.

DK-LOK[®] USA

■ 3350 SpringHill Ave., Mobile, AL 36607 ■ T: (251) 472-9580 ■ F: (251) 450-0962 ■ Toll Free: (800) 328-5803

www.dklokusa.com