

**Fortier Loss Control Consultants, Inc.**

**2267 Jackson Downs Blvd.**

**Nashville, TN 37214**

**615-883-2816**

**[www.FortierSafety.com](http://www.FortierSafety.com)**



## **ABOUT FORTIER**

*Fortier Loss Control Consultants was founded in Nashville, Tennessee in 1984. Over the last 30 years we have grown to become a company recognized and respected by our numerous clients, both local and national. We have eight full-time consultants located in Fortier's three main offices. All of the safety consultants are more than qualified to provide informative and accurate knowledge regarding safety issues. Some of the services Fortier offers include:*

- *Safety Program Design/Audit*
- *Inspection/Consultation Services*
- *Professional Accident Investigation*
- *Safety Training and Development of Training Resources*
- *Full-Time Onsite Safety Personnel*
- *Substance Abuse Program Administration*

*Fortier provides services to a variety of businesses, but primarily we focus on construction and manufacturing companies. Our client base is positioned strongly in the Southeastern United States, but we have grown to support companies located throughout the entire country. Our strategy is to partner with our clients to form long lasting relationships. Some of our clients include Clayton Homes, Bell and Associates, Lockwood Green, Phillips and Jordan, and Robins and Morton Group. Fortier is committed to providing quality service while improving the client's overall risk management expertise from within. We are committed to continued growth while maintaining high standards with our current client base.*



***We greatly appreciate the opportunity to present our services to you and hope that you will use Fortier Loss Control Consultants for all of your safety needs.***

# **SAFETY AS A PROFIT CENTER**

## **SAFETY CAN SAVE YOU MONEY!**

### ***BOTTOM LINE GOAL***

- To make safety a profit center within your company.
  - Reducing accidents and injuries to zero.
  - Eliminating OSHA citations.
  - Lowering worker's compensation costs.

### ***STEPS TO ACHIEVE THIS GOAL***

- Develop written policies and procedures that can be implemented and followed.
- Management and supervisor training.
- Employee training.
- Accountability!

### ***WHAT IS THE IMPACT OF ACCIDENTS IN THE WORKPLACE?***

#### *Humanitarian Aspects*

- 4,609 workers were killed on the job in 2011.
- Nearly 3 million people suffered workplace injuries in 2011.
- Construction and Manufacturing are two of the most dangerous industries in America.

#### *Financial Aspects*

- Average cost per accident is \$5,000 - \$8,000
- Does not include indirect costs such as lost production, administrative costs, retraining, etc.

### ***WHAT DO WE NEED FOR AN EFFECTIVE SAFETY PROGRAM?***

- Jobsite Inspections:
  - Professional eyes and ears on site to conduct safety audits to ensure that safety is being implemented and its importance understood at the level it matters in the workplace.
- Training:
  - Effectively train management, supervisors, and employees on recognizing and eliminating unsafe acts and conditions before an accident happens.
- Resources:
  - Assistance for management and field supervision on safety issues such as standards, training requirements, toolbox talks, etc.

### ***HOW CAN FORTIER LOSS CONTROL CONSULTANTS HELP?***

- FLCC offers proven professionals and programs that will assist you with these goals.

# **FORTIER SERVICES**

*Fortier provides a cost effective means to supply your company with everything from a comprehensive, professional safety program to an instructor for an OSHA required training course. We can implement and manage your entire safety program or help the safety director at your company meet specific safety program requirements. Here is a list of the different services offered by Fortier.*

## **Safety Program Design/Audits**

Fortier can design a customized safety program for your workplace or audit your current safety program. An audit gives you an effective way to evaluate your safety program as a comprehensive unit. We provide an understanding of how a company's program undertakes safety concerns. Problem areas are identified and solutions suggested in the following area: management involvement and support of the safety program; safety department procedures, policies and compliance with government regulation; hiring procedures, policies and compliance issues, accident history review, investigation procedures, and recordkeeping policies; safety training review; incentive program review; and accountability for safety compliance.

## **Inspection/Consultative Services**

Most company safety directors, if on staff at all, are spread too thin to provide the inspection frequency that is necessary to ensure that a safety program is being properly implemented. The best program available is ineffective if it is not enforced. Fortier offers independent, thorough, well-documented, and appropriately frequent inspections. Please view the attached example inspection report.

## **Professional Accident Investigation**

Fortier consultants are available for timely, onsite accident investigations. The documentation provided by this investigation could be invaluable for legal purposes. Fortier consultants are frequently hired as expert witnesses or simply as a management tool to help avoid a recurrence of a similar accident.

## **Safety Training**

Fortier offers regulated or customized training classes for supervisors and/or employees. Our instructors provide a complete line of training courses as regulated by state and federal agencies such as OSHA, TOSHA, MSHA, and DOT. We also design safety meetings that are customized to the special needs of our clients. Some courses we offer include: OSHA 10 and 30 Hour for construction and general industry, supervisor safety training, hazard communication training, permit required confined space training, respirator training, lockout/tagout training, medic first aid, substance abuse training, excavation safety training, fall protection training and many more. This training can be conducted by a consultant, taken online ([www.FortierSafety.com](http://www.FortierSafety.com)), or at our office during a scheduled class. Training schedule is posted on our website.

## **Full-Time Onsite Safety Personnel**

Fortier Loss Control can provide full-time onsite safety personnel for short or long term contracts. Fortier has multiple personnel currently available for sites that require a full-time safety person. Many contracts now require a safety person to be present onsite at all times for the duration of the project. This can leave the contractor in a position to find, hire, and maintain training for a full time safety person that they might not have a need for after the project is complete. Fortier will help locate, maintain training, and support a full time safety person for your project. The advantage to using Fortier is the vast support that is provided to the onsite safety person, the readily available safety materials, and secondary onsite support if required. Please contact Fortier if we can offer you more information regarding this subject.

## **Substance Abuse Program Recognition**

Our sister company, Fortier Substance Abuse Testing, provides substance abuse program administration and background checks.

**Fortier Substance Abuse Testing, Inc.**

[www.FortierDrugTesting.com](http://www.FortierDrugTesting.com)

PH 615-883-6962 & FAX 615-885-1754

# INSPECTION REPORTS

Following an inspection, Fortier provides an inspection report from our visit that outlines recommended changes to be made. Below are a few pages from an example report.



## Summary Inspection Report

Company Name	ABC Construction	Printed	4/9/2007
Job Site	Anywhere	Inspector	Tony Powell
Superintendent	John Smith	Phone	(615)883-2816
Company Size	26 to 75	Inspection Date	3/21/2007
		Inspection Type	Random

This report does not contain every loss potential, but relates only to the hazards observed and described in this report. It does not confirm the existence of violations of any federal, state, or local law, and does not presume that all such violations are addressed. This report is for the exclusive use of management for the purpose of evaluating the effectiveness of their safety program. This report does not provide any benefit to third parties, including employees of our customer, other contractors on this site, or subcontractors of our customer.

### Site Survey

#### Housekeeping

All areas were well maintained except at the base of the roof ladder where the roofers are taking their breaks. Food and container trash was present and needs to be cleaned up.

#### Personal Protective Equipment

Each employee working on site was observed wearing their hard hats and safety glasses. Gloves are available for use if needed. Hearing protection and hair nets are required when working in the production areas of the facility. The temporary personnel working for ABC are using reflective vests at all times. The only correction required was for one of the drywall framers missing sleeves on his shirt.

#### Labor and Emergency Posters in Place

All postings are in place in the main office. Texas and federal posters are now posted.

#### First Aid Available

First Aid supplies are in place in the main office.

#### CPR Provider

John's CPR certification is still current. EMS is within the required four minutes of the site.

#### Electrical Protection

Several GFCI outlets are still in place at the new expansion. Most trades are doing a good job of inspecting their cords. However, one of the drywall contractors' cords was spliced with wire nuts at mid-span.

#### Safety Meetings Being Held and Documented

This week's meeting has not yet been held.

#### Excavations in Compliance

The only open areas were at the slab on grade prep. No trenches were open and the concrete slab will be placed tomorrow. The deepest areas are less than two feet deep at the slab "handout".

#### Fall Protection in Compliance

The only noted exposures are at the roof level and only DEF Roofing personnel are working in the area. Alfredo is now on site primarily to supervise roofing activities. Warning lines are in place at active areas and material stocking areas. The run of roofing being installed today is more than thirty feet from a perimeter except at each end of the building where warning lines are maintained. All interior high activities are performed from scissor lifts.

#### Scaffolds in Compliance

The mason has one scaffold setup and it is only one frame high. He is using this to infill the existing overhead door openings. No additional scaffolds other than scissor lifts were observed.

This report does not contain every loss potential, but relates only to the hazards examined and described in this report. It does not include violations of any Federal, State, or local laws.

Page 1

### Fire Extinguishers

Devices are still in place on the temporary walls. All were identified and charged.

### Equipment being properly inspected and maintained

All observed equipment was properly maintained today during my inspection. Mobile equipment was equipped with backup alarms.

### Accidents Since Last Inspection

No accidents to report this month.

### Are daily safety checklists being completed

The daily checklists for this project are being completed and are in order through yesterday. Alfredo is filling out the lists this week.

### Has a Project Specific Crisis Management Plan been prepared?

A site specific plan is in place and the local contact numbers are posted. Allen maintains a copy of the plan in his job trailer where it can be accessed if needed.

### Comments

The most active areas are at the roof level today. There are two crews on the roof this morning and another is expected later today. Forcum Lannon personnel are working on the second half of the slab on grade scheduled to be placed and finished tomorrow morning.

### Recommendations

Recommendations were addressed during inspection and all should be abated by tomorrow morning.

This report does not contain every loss potential, but relates only to the hazards examined and described in this report. It does not include violations of any Federal, State, or local laws.

Page 2



## Inspection Report

Inspection Date	3/21/2007	Printed	4/9/2007
Abatement Date	4/21/2007	Inspector	Tony Powell
Status	OPEN	Inspection ID	3-21-1
		Penalty Type	Serious

Company Name	ABC Construction	Work Area	New Slab Area
Job Site	Anywhere		
Superintendent	John Smith	Location	Adjacent to New Ramp
Subcontractor	Drywall Contractor		

Category: Electrical-Flexible Cords  
 Description: Flexible cords were not used only in continuous lengths without splice or tap.  
 Standard: 1926.405(g)(2)(iii)  
 Recommendation: Cords cannot be repaired in this manner. This cord needs to be removed from the site or properly converted into two cords. Only small tears in the outer insulation can be repaired using UL approved repair tape returning the outer layer to the same integrity created by the manufacturer.



Corrective Action Taken

\_\_\_\_\_  
 \_\_\_\_\_  
 \_\_\_\_\_  
 Signature Date

This report does not contain every loss potential, but relates only to the hazards examined and described in this report. It does not include violations of any Federal, State, or local laws.

Page 3



## Inspection Report

Inspection Date	3/21/2007	Inspector	Tony Powell
Abatement Date	4/21/2007	Inspection ID	3-21-3
Status	OPEN	Penalty Type	Serious

Company Name	ABC Construction	Work Area	Base of Roof Access
Job Site	Anywhere		
Superintendent	John Smith	Location	Break Area
Subcontractor	Roofing		

Category: General Safety / Housekeeping  
 Description: Debris including scrap lumber, combustible trash, and garbage was not removed from the worksite at regular intervals.  
 Standard: 1926.25(a)  
 Recommendation: Personnel must throw their break trash away in the adjacent dumpster or take it with them.



Corrective Action Taken

\_\_\_\_\_  
 \_\_\_\_\_  
 \_\_\_\_\_  
 Signature Date

This report does not contain every loss potential, but relates only to the hazards examined and described in this report. It does not include violations of any Federal, State, or local laws.

Page 4



# INSPECTION REPORTS CONTINUED

## Inspection Report

Inspection Date: 3/21/2007      Printed: 4/9/2007  
 Abatement Date: 4/21/2007      Inspector: Tony Powell  
 Status: OPEN      Inspection ID: 3-21-5  
 Penalty Type: Serious

Company Name: ABC Construction      Work Area: New Door Framing  
 Job Site: Western Container in Houston  
 Superintendent: John      Location: Adjacent to New Production/  
 Subcontractor: Drywall Contractor      Warehouse Ramp

Category: Company Policy  
 Description: Shirts with sleeves (4" minimum) were not worn.  
 Standard:  
 Recommendation: Shirts with sleeves (4" minimum) are required as per company policy and the safety inspection checklist. One framer to be corrected.



Corrective Action Taken

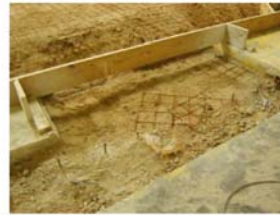
\_\_\_\_\_  
 \_\_\_\_\_  
 \_\_\_\_\_  
 Signature      Date

## Inspection Report

Inspection Date: 3/21/2007      Printed: 4/9/2007  
 Abatement Date: 4/21/2007      Inspector: Tony Powell  
 Status: OPEN      Inspection ID: 3-21-6  
 Penalty Type: Serious

Company Name: ABC Construction      Work Area: Removed Slab Areas  
 Job Site: Anywhere  
 Superintendent: John Smith      Location: Existing Vertical Dowels  
 Subcontractor: ABC

Category: Concrete and Masonry  
 Description: All protruding reinforcing steel, conduits, stakes or pipes onto which employees could fall, were not guarded to the hazard of impalement.  
 Standard: 1926.701(b)  
 Recommendation: Protect the short dowels until immediately before concrete is placed on them tomorrow. This condition was observed at three locations.



Corrective Action Taken

\_\_\_\_\_  
 \_\_\_\_\_  
 \_\_\_\_\_  
 Signature      Date

## Inspection Observations

3-21-2

Work Area: Roof Level      Location: Active Roofing Area  
 Subcontractor: Roofing      Standard

Category: Fall Protection  
 Description: Employees were observed using fall protection equipment in a safe manner and in compliance with all safety standards. Good job of warning line installation. Systems are being moved with the work.  
 Observation:



3-21-4

Work Area: Permanent Power      Location: Main Service  
 Subcontractor: ABC Electric      Standard

Category: Electrical  
 Description: Employees doing electrical work were observed to be working safely and in compliance with all safety standards. GFCI outlets or GFCI converters were in place throughout the site today. No corrections were required.  
 Observation:

