

# Furnace Demo

## Over 3,000 lbs. in cast iron



Each weigh 500 lbs.





# Empty furnace room



# 20 year old hot water tank behind furnace



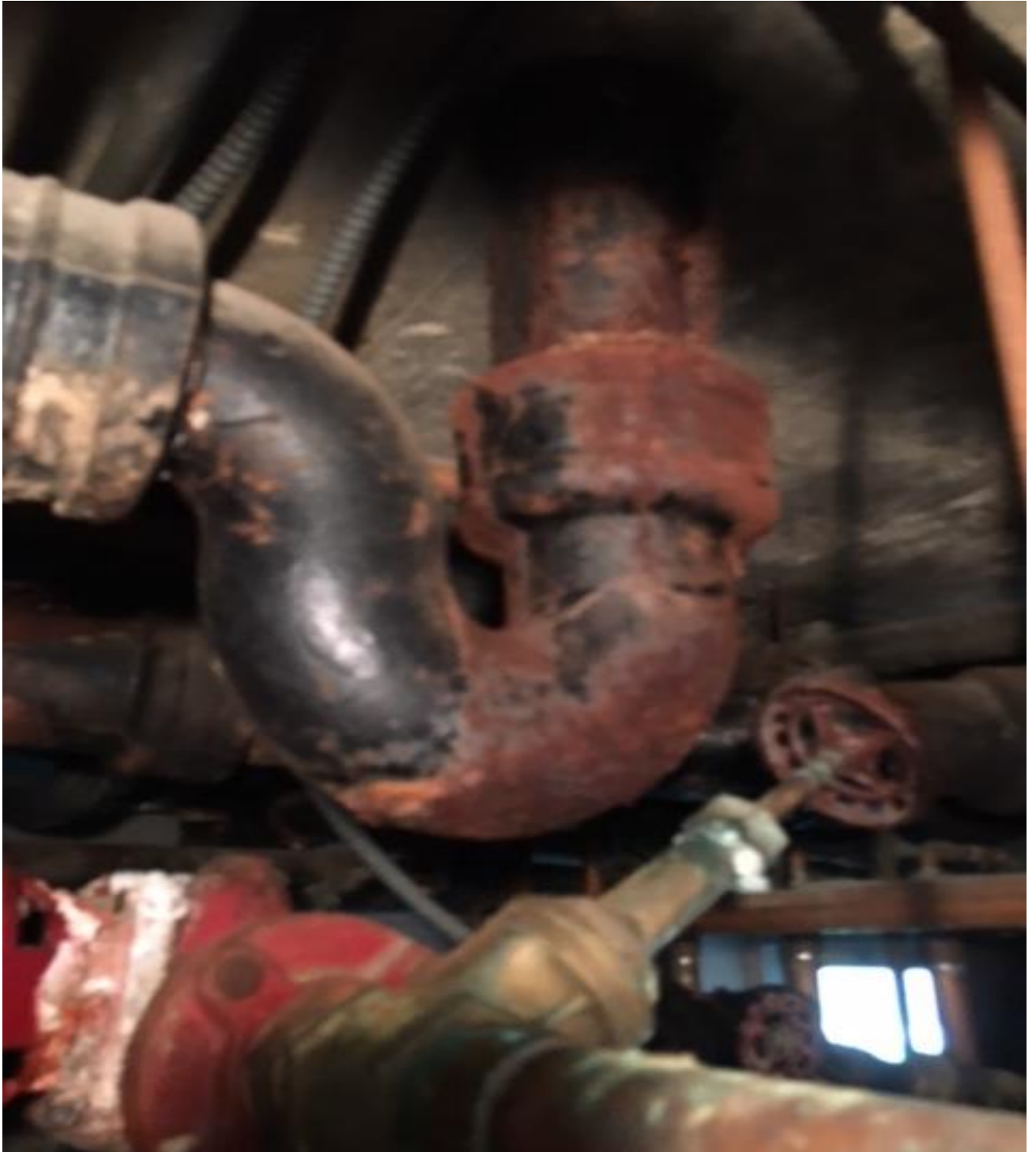




# Replaced



# Swollen and leaking sewer lines

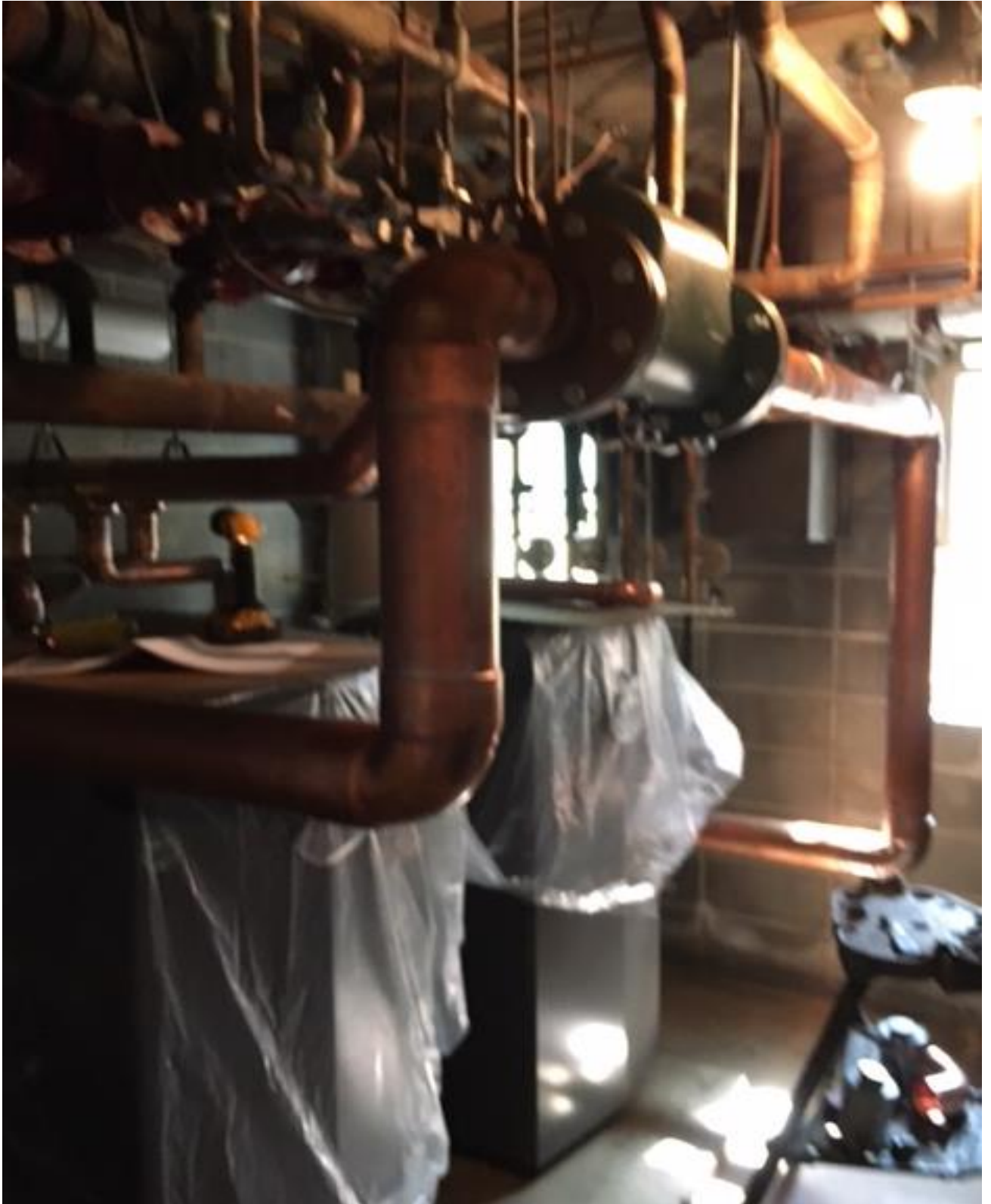


Dripping on new furnace  
must be replaced

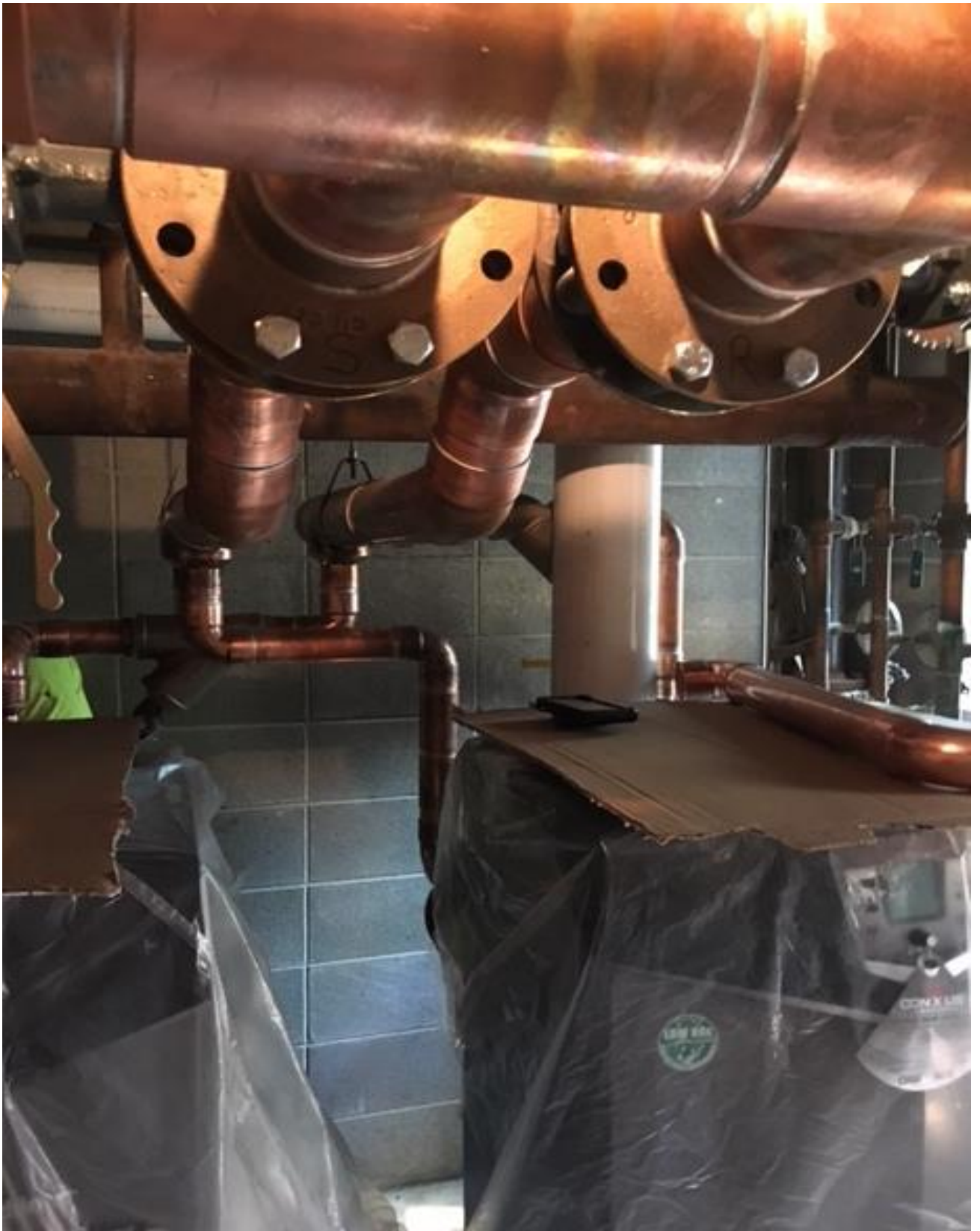




# New furnace and piping



# New piping above furnace



# Two Furnaces





# Crane removes and replace Sanctuary rooftop unit



# Old unit scrapped by Don Jones





# Gary Dressler leaning on new unit







# Pad for new unit in Fellowship Hall





# New Pad





# Fellowship Hall's new unit



# Duct work in Fellowship Hall

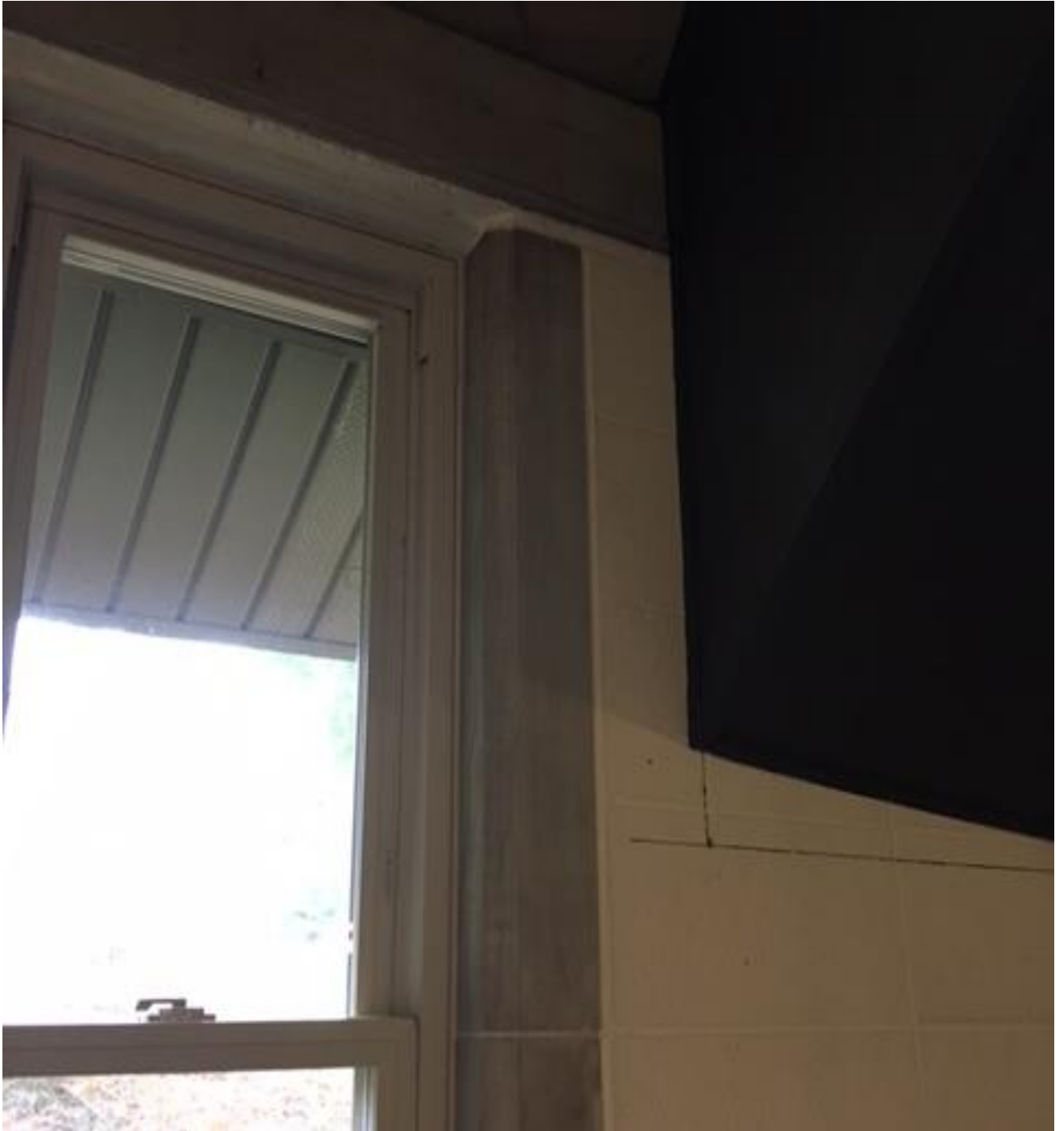


# Curtain rod need shortened





# Shorten curtain rod



Need seamstress





# Reduce width of curtain



# New retaining walls







To be painted plus top siding  
repaired





sand/prime/two top coats



Front entrance posts  
sand/ prime/paint



# One post needs replaced





Front door needs paint



# Front doors before paint



When we have the lift need  
to paint light and flag pole  
and cross





# Light post



# Flag pole





Flagpole needs paint





# Cross



# Cross





# Support holding cross

