

3D METAL PRINTED ORTHODONTIC APPLIANCES

DELIVERY INSTRUCTIONS:

1. TOOTH PREPARATION

- Prophyl rinse and dry the buccal and lingual surfaces of involved teeth.
- Apply Prophyl **GEL** etch from Reliance to the full buccal and lingual surfaces of involved teeth
 - DO NOT etch the entire occlusal surface
 - DO NOT use a self-etching primer as it is inadvisable on this type of appliance
 - GEL etch produces a better outcome than liquid etch
- After 30 seconds, suction visible etch from tooth and irrigate thoroughly for 10 seconds per tooth
- Desiccate teeth



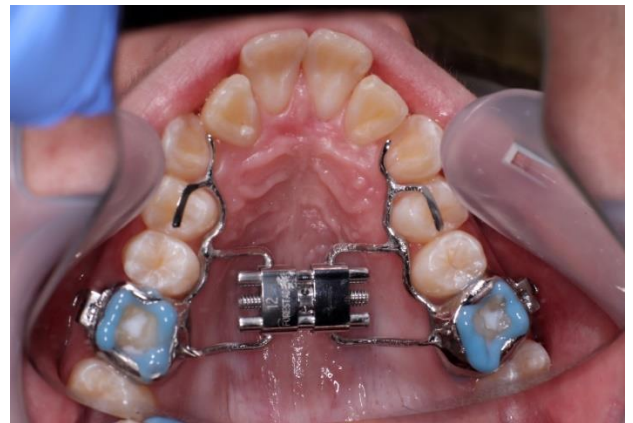
2. ASSURE PLUS

- Apply one coat of Assure Plus to entire etched buccal surface and buccal cusp tips of tooth **ONLY**. Apply one brush-sized dot to the palatal/lingual side of the tooth.
- DO NOT apply to occlusal surface
- Air dry for 3 seconds.
 - No light cure is needed
 - The appliance is micro-etched from our lab and needs no additional preparation.
 - NOT priming the entire tooth will insure easier removal
 - Upon removal, the buccal side of the band should come off easily



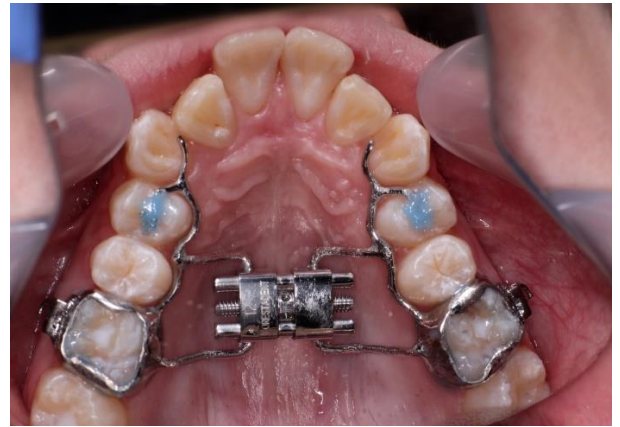
3. BAND LOK

- Apply an even, thin layer of **Dual Cure Self-Mix BandLok Blue** (from Reliance) to inside of band as the teeth are being primed with Assure Plus.
 - Regular BandLok blue does not have dual-cure properties and possibly increasing the chance of debonding.
- BandLok has a 4-minute working time, do not preload appliance until ready to deliver chairside
- Seat appliance to express glue
 - If there is an excess of glue, you can light cure the paste for 1-2 seconds (at the most) and can be easily removed while in the putty state.



4. CURING

- Tack cure flash for 1 second ONLY
 - This will make all the flash cohesive and allow for single piece removal
- Finish curing from occlusal opening for 30 seconds per involved tooth



5. Finalization

- Remove isolation and instruct patient to wait for 5 minutes before activating appliance
- BandLok is a dual cure and will always achieve full polymerization

REMOVAL INSTRUCTIONS

With traditional band removal pliers, break appliance from tooth on buccal side to create cement separation – BandLok bonds chemically to metal – the majority, if not all, cement will remove with the appliance.

- OrthoDent always places seating lugs/buccal tubes for your convenience
- When removing the band, do not pull straight out. Slightly turn your wrist and the appliance should pop out easily.

