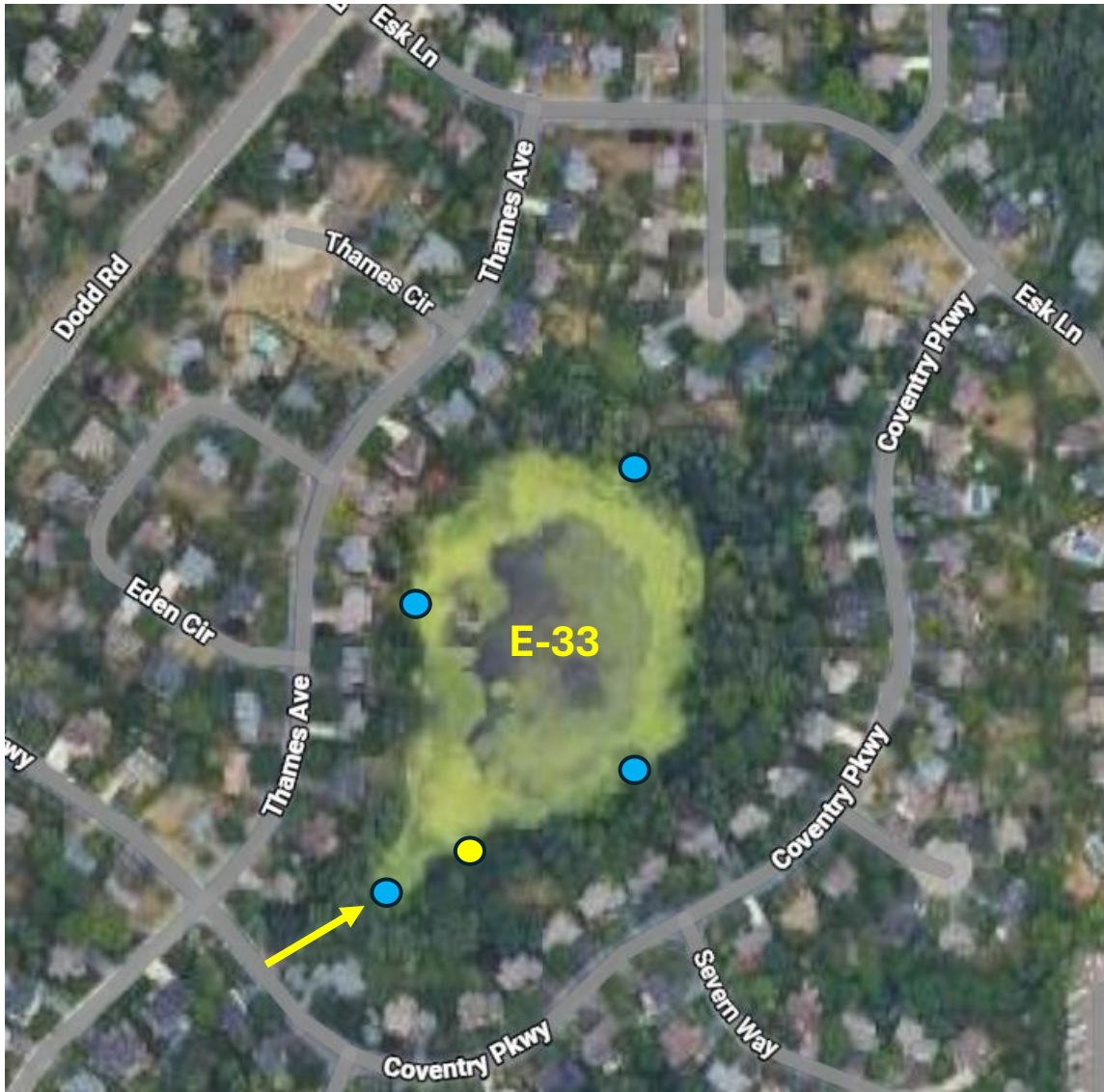


2026 WHEP sites E-33 (aka Coventry Pond or JP-23)



- Stormwater flows in (inlet)
- Stormwater flows out (outlet)

From Dodd Rd and Wescott in Eagan, go south on Dodd, then turn east on Coventry Parkway. One entry is from the south as shown at yellow arrow; another may be from 3903 Mersey Pt which is the address of a former volunteer Dan Scheller who would agree to let us tromp through his yard 😊

Feb 2026 by Jessie Koehle – jessie.Koehle@EaganMN.gov

Call or text with questions: 651-485-2235 cell

