

BRATTS LADDERS

SPECIALIST ACCESS EQUIPMENT SINCE 1895



CATALOGUE 2024

WWW.BRATTSLADDERS.COM

Ladder and Step Specifications

There have been some major changes in the recent few years due to the development of the EN131 standard to envelope as many product types under one standard. This may have caused a little confusion so below we will try to answer some questions you may have.

British Standards Kitemark - what does it mean?

British Standards Institution (BSI), also known as the BSI Group, is the UK's national standards body. It sets technical specifications for a wide range of products and services. As a manufacturer using BSI, we can apply a Kitemark on any product that has fully passed BSI's rigorous testing .

BSI also offer a testing service for nonstandard products e.g. a ladder that may require its width to be slightly narrower than the standards specify. The ladder would comply with all the other parts of that standard but cannot be kitemarked as being fully compliant.

Manufactured or Conforms to - what does it mean?

We manufacture to our customers' requirements creating bespoke equipment to solve working at height issues. To do this we use long standing and robust standards that may have been withdrawn or not for a specific material. e.g. The Class 1 BS 2037 (Aluminium) and BS 1129 (Timber) - standards which have been withdrawn by British standards, but we still manufacture to these standards just simply omitting the Kitemark from the product.

We also manufacture extension ladders that can be either Kitemarked BS EN131 or just simply conforms to the standard because of a different base dimensional requirement by the customer. We would say that these products are manufactured to the relevant standards.

Summation

We are customer driven to provide products that are practicable and fit for purpose and sometimes this takes products outside of specifications. Wherever possible we will incorporate the use of known standards to strengthen the build and ensure product and material integrity.

The kitemark is only our benchmark.

the following are all relevant standards for new and existing products

Ladder and Step Specification Continued:

INFORMATION

Standard	Material	Class Use	Duty Rating	Max vertical Static Load	Products Covered
BS EN131 & EN131	Any	Professional and Non-professional		150kg	Standard ladders and steps
					Telescopic ladders
					Mobile ladders with platform
					Single or multiple hinge-joint ladders
BS1129 (Superseded, Withdrawn)	Timber	Domestic	95kg	125kg.	Portable timber ladders, steps, trestles and lightweight stagings
		Professional	130kg	175kg	
BS2037 (Superseded, Withdrawn)	Aluminium	Domestic	95kg	125kg.	Portable timber ladders, steps, trestles and lightweight stagings
		Professional	130kg	175kg	
BS8630	Timber	Any		150kg	Trestles and Stagings
BS8634	Any	Any		150kg	Portable roof ladders
BS EN 14183:2003	Any	Any		150kg	Step stools
ANSI 14.5 2017	GRP	Domestic	90kg	119kg	Portable plastic reinforced ladders & steps
		Professional	136kg	179kg	
BS EN 14975-2006+A1-2010	Any	Domestic		150kg	Loft ladder

GLASSFIBRE INDEX

Single Section Ladders	4
Double Extension Ladders	5
Triple Extension Ladders	6
Surveyors Ladders	7
Combination Ladders	8
Shelf Ladders	9
Double Sided Step	10
Roof Ladders	11
Swingback Steps	12
Platform Steps	13
Vision 360° Platform	14
B-DEK & SteUp Platforms	15

SPECIFICATIONS

Non-conductive material

Ladders

Stiles 84 x 30mm Pultruded Channel Heavy Duty Section

Glassfibre Rung 30 x 30mm Pultruded Box Section

Aluminium Alloy Rung 32mm Diameter Round

Castellated Rung Rungs Fitted At 250mm Centres

Complies With ANSI 14.5 & ESI 13.1 Kitemarked (where indicated) BS EN131 Designed For Heavy Industrial Use

* Denotes not Kitemarked

Note:

For a ladder to fully comply and be kitemarked to BS EN 131 the ladder must have a base width greater than the standard width of its stiles (to a max of 1.2mtr) if it is over three metres in extended length. This means the addition of a base bar on our products. due to demand we do not fit base bars as standard so if require a fully Kitemarked product please request this when ordering.

Steps

Stiles 84 x 30mm Pultruded Channel Heavy Duty Section Backleg

42 x 36mm Pultruded Channel Section

67° Glassfibre Tread Serrated For Grip 67°

Aluminium Tread Serrated For Grip Rear

Cross Braces For Added Life

Usage


Electrical installations and maintenance Chemical industries and general building trades

SINGLE SECTION LADDERS



Aluminium Rung - **GL1** Range

Glassfibre - **AFL** Range

- ⇒ Available in both Aluminium rung and all fibre versions
- ⇒ Special rung joints - strong anti-twist fixing
- ⇒ Heavy duty channel section
- ⇒ Heavy duty rubber feet for prolonged life
- ⇒ Fully repairable
- ⇒  Kitemarked BS EN131 (Fitted with Bar at Base if over 3mtr)

ALLOY "D" RUNG	ORDERING CODES		LENGTH CLOSED	RUNGS PER SECTION	APPROX WEIGHT
	ALLOY ROUND RUNG	GRP SQ RUNG			
DGL1 09	GL1 09	AFL 09	2.35m	9	7kg
DGL1 12	GL1 12	AFL 12	3.05m	12	9kg
DGL1 14	GL1 14	AFL 14	3.55m	14	11kg
DGL1 16	GL1 16	AFL 16	4.10m	16	14kg
DGL1 19	GL1 19	AFL 19	4.83m	19	16kg

DOUBLE EXTENSION LADDERS




Aluminium Round
Rung - **GL2** Range



Aluminium "D"
Rung - **DGL2** Range



Glassfibre Square
Rung- **AFD** Range

- ⇒ Available in both Aluminium rung and all fibre versions
- ⇒ Special rung joints - strong anti-twist fixing
- ⇒ Heavy duty channel section
- ⇒ Heavy duty rubber feet for prolonged life
- ⇒ Fully repairable
- ⇒  Kitemarked BS EN131 (Fitted with Bar at Base if over 3mtr)
- ⇒ Rope operation is available on all sizes

ALLOY "D" RUNG	ORDERING CODES		LENGTH		RUNGS PER SECTION	APPROX WEIGHT
	ALLOY ROUNDRUNG	GRP SQ RUNG	CLOSED	EXTENDED		
DGL2 09	GL2 09	AFD 09	2.35m	4.05m	9	14kg
DGL2 12	GL2 12	AFD 12	3.05m	5.55m	12	18kg
DGL2 14	GL2 14	AFD 14	3.55m	6.30m	14	22kg
DGL2 16	GL2 16	AFD 16	4.10m	7.55m	16	28kg
DGL2 19	GL2 19	AFD 19*	4.83m	8.85m	19	32kg

TRIPLE EXTENSION LADDERS



Aluminium Round Rung - **GL3** Range



Glassfibre - **AFT** Range



Glassfibre - **DGL3** Range

- ⇒ Available in both Aluminium rung and all fibre versions
- ⇒ Special rung joints - strong anti-twist fixing
- ⇒ Heavy duty channel section
- ⇒ Wall running wheels
- ⇒ Auto locking clutch - arrests every rung
- ⇒ Optional rope operation
- ⇒ Heavy duty rubber feet for prolonged life
- ⇒ Fully repairable
- ⇒ Kitemarked BS EN131 (Fitted with Bar at Base if over 3mtr)
- ⇒ Rope operation is available on all sizes

ALLOY "D"	ORDERING CODES		LENGTH CLOSED	LENGTH EXTENDED	RUNGS PER SECTION	APPROX WEIGHT
	ALLOY ROUND RUNG	GRP SQ RUNG				
GL3 09	DGL3 09	AFT 09	2.55m	5.87m	9	21kg
GL3 12	DGL3 12	AFT 12	3.26m	7.45m	12	27kg
GL3 14	DGL3 14	AFT 14"	3.71m	9.25m	14	34kg

SURVEYORS LADDERS



Aluminium Round Rung - GFSER Range

- ⇒ Special rung joints - strong anti-twist fixing
- ⇒ Heavy duty channel section
- ⇒ Purpose made quick fit joint
- ⇒ Heavy duty rubber feet for prolonged life
- ⇒ Fully repairable
- ⇒ Can be fitted with pole bow & stability devices, see pages 41-43

ORDERING CODES	No. OF SECTIONS	LENGTH CLOSED	LENGTH EXTENDED	RUNGS PER SECTION	APPROX WEIGHT
GFSER2	2	1.2m	2.08m	8	8.5kg
GFSER3	3	1.2m	3.10m	12	12.5kg
GFSER4	4	1.2m	4.11m	16	17kg

COMBINATION LADDERS

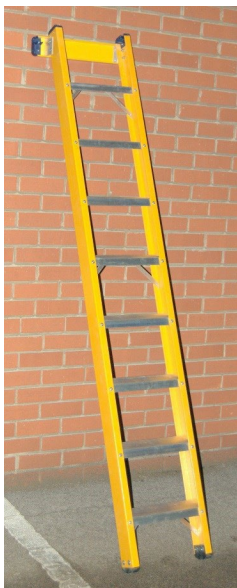


Glassfibre— AFC (pictured) & GFC Range

- ⇒ Available in both Aluminium alloy rung and all fibre versions
- ⇒ Anti-slip tread
- ⇒ Ideal for loft access
- ⇒ Heavy duty channel section
- ⇒ Strong alloy locking bars
- ⇒ Heavy duty rubber feet for prolonged life
- ⇒ Fully repairable
- ⇒ Manufactured with BS EN131 compliant materials

ORDER CODES		LENGTH CLOSED	LENGTH EXTENDED	APPROX WEIGHT
ALLOY RUNG	GRP RUNG			
GFC06	AFC06	1.53m	2.14m	17kg
GFC07	AFC07	1.78m	2.64m	19kg
GFC08	AFC08	2.03m	3.15m	21kg
GFC09	AFC09	2.29m	3.66m	23kg
GFC10	AFC10	2.54m	3.92m	26kg

SHELF LADDERS



Glassfibre— **AFSL** / **GFSL** Range



Bespoke GFSL

- ⇒ Available in both Aluminium alloy rung and all fibre versions
- ⇒ Anti-slip tread
- ⇒ Ideal for loft access
- ⇒ Heavy duty channel section
- ⇒ Strong alloy locking bars
- ⇒ Heavy duty rubber feet for prolonged life
- ⇒ Fully repairable
- ⇒ Manufactured with BS EN131 compliant materials

ORDERING CODES		OVERALL	APPROX
ALLOY RUNG	GRP RUNG	LENGTH	WEIGHT
GFSL05	AFSL5	1.53M	4.5kg
GFSL06	AFSL6	1.78m	5.0kg
GFSL07	AFSL7	2.03m	5.5kg
GFSL08	AFSL8	2.29m	6.0kg
GFSL09	AFSL9	2.54m	6.5kg
GFSL10	AFSL10	2.80m	7.0kg
GFSL12	AFSL12	3.32m	8.0kg

DOUBLE SIDED STEPS



- ⇒ Available in both alloy tread and all fibre versions
- ⇒ Anti-slip tread
- ⇒ Heavy duty channel section
- ⇒ Heavy duty rubber feet for prolonged life
- ⇒ Complies with ANSI 14.5 & ESI 13-1
- ⇒ Fully repairable
- ⇒ All items listed here are Kitemarked BS EN131

ORDERING CODES		LENGTH CLOSED	NUMBER OF TREADS	APPROX WEIGHT
ALLOY TREAD	G/FIBRE TREAD			
GTS04	AFDS04	1.07m	4	8.5kg
GTS05	AFDS05	1.32m	5	10.0kg
GTS06	AFDS06	1.58m	6	12.5kg
GTS07	AFDS07	1.83m	7	14.0kg
GTS08	AFDS08	2.09m	8	15.5kg
GTS09	AFDS09	2.34m	9	19.0kg
GTS10	AFDS10	2.59m	10	20.5kg

ROOF LADDER



- ⇒ With Aluminium anti-slip alloy rung
- ⇒ Heavy duty channel section
- ⇒ Strong alloy rubber faced support bars
- ⇒ Heavy duty rubber feet for prolonged life
- ⇒ Fully repairable
- ⇒ Manufactured with BS EN131 compliant materials

ORDERING CODES	OVERALL	RUNGS PER	APPROX
ALLOY RUNG	LENGTH	SECTION	WEIGHT
GL12RL	3.5M	12	15kg
GL19RL	5.5M	19	21kg



SWINGBACK STEPS



Aluminium Tread - **GSB** Range



Glassfibre Tread - **AFSB** Range

- ⇒ Available in both Aluminium tread and all fibre versions
- ⇒ Glassfibre reinforced plastic top / tool holder
- ⇒ Locking side stays
- ⇒ Anti-slip tread
- ⇒ Heavy duty channel section
- ⇒ Heavy duty rubber feet for prolonged life
- ⇒ Complies with ANSI 14-5 & ESI 13-1
- ⇒ Fully repairable
- ⇒ All items listed here are Kitemarked BS EN131

ORDERING CODES		OVERALL LENGTH	NUMBER OF TREADS	APPROX. WEIGHT
ALLOY TREADS	GRP TREADS			
GSB04	AFSB04	1.02m	4	8.5kg
GSB05	AFSB05	1.25m	5	10.0kg
GSB06	AFSB06	1.53m	6	12.5kg
GSB07	AFSB07	1.78m	7	14.0kg
GSB08	AFSB08	2.03m	8	15.5kg
GSB09	AFSB09	2.29m	9	19.0kg
GSB10	AFSB10	2.54m	10	20.5kg
GSB11	AFSB11	2.79m	11	22.0kg
GSB12	AFSB12	3.04m	12	24.0kg
GSB13	AFSB13	3.29m	13	26.0kg
GSB14	AFSB14	3.54m	14	28.0kg

PLATFORM STEPS



Glassfibre Tread - **AFSP** Range



Aluminium Tread - **GSP** Range



- ⇒ Available in both Aluminium tread and all fibre versions
- ⇒ 260 X 350mm Folding platform
- ⇒ Locking side stays
- ⇒ Anti-slip tread
- ⇒ Heavy duty channel section
- ⇒ Heavy duty rubber feet for prolonged life
- ⇒ Complies with ANSI 14-5 & ESI 13-1
- ⇒ Fully repairable
- ⇒ All items listed here are Kitemarked BS EN131
- ⇒ Also available with handrails

ORDERING CODES		OVERALL LENGTH	PLATFORM HEIGHT	NUMBER OF TREADS	APPROX. WEIGHT
ALLOY TREAD	GRP TREAD				
GSP04	AFPS04	1.63m	0.93m	4	9.5kg
GSP05	AFPS05	1.88m	1.18m	5	11.0kg
GSP06	AFPS06	2.13m	1.43m	6	12.5kg
GSP07	AFPS07	2.39m	1.68m	7	14.5kg
GSP08	AFPS08	2.64m	1.93m	8	16.5kg
GSP09	AFPS09	2.90m	2.18m	9	19.0kg
GSP10	AFPS10	3.15m	2.43m	10	21.5kg
GSP11	AFPS11	3.40m	2.68m	11	23.0kg
GSP12	AFPS12	3.65m	2.93m	12	25.0kg
GSP13	AFPS13	3.90m	3.18m	13	28.5kg
GSP14	AFPS14	4.15m	3.43m	14	30.5kg



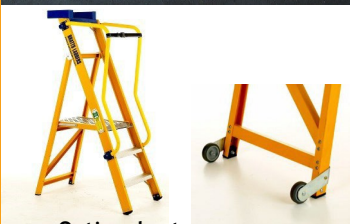
VISION 360 ° PLATFORM



- ⇒ 360° working platform - 550mm x 400mm
- ⇒ Glass fibre frame with Aluminium treads
- ⇒ Enclosed platform on 3 sides for safety
- ⇒ Insulated and non-conductive whilst in use
- ⇒ Ergonomically designed for industrial work
- ⇒ Manufactured to BS EN131, ANSI 14-5 and ESI 13-1

Optional Extras

- ⇒ Security webbing strap across open side -
- ⇒ Powder coated handrail -
- ⇒ Plastic coated handrail -
- ⇒ Wheels at rear -
- ⇒ Outriggers -
- ⇒ Laddertag for inspection and maintenance -
- ⇒ Marking with company details for security -
- ⇒ Detachable tool tray -



Optional extras

ORDERING CODES		CLOSED HEIGHT	PLATFORM HEIGHT	No. OF TREADS	APPROX. WEIGHT	BASE WIDTH	OPEN SPAN
ALLOY TREAD	GRP TREAD						
XPLT02	AFXPLT02	1.55m	0.46m	2	11.5kg	530mm	875mm
XPLT03	AFXPLT03	1.80m	0.71m	3	13.5kg	560mm	1035mm
XPLT04	AFXPLT04	2.05m	0.96m	4	14.0kg	590mm	1095mm
XPLT05	AFXPLT05	2.31m	1.19m	5	16.0kg	620mm	1355mm
XPLT06	AFXPLT06	2.56m	1.44m	6	19.0kg	650mm	1525mm
XPLT07	AFXPLT07	2.82m	1.64m	7	20.0kg	680mm	1685mm
XPLT08	AFXPLT08	3.07m	1.89m	8	22.0kg	710mm	1845mm
XPLT09	AFXPLT09	3.32m	2.19m	9	23.0kg	740mm	2005mm
XPLT10	AFXPLT10	3.57m	2.44m	10	24.0kg	770mm	2165mm
XPLT11	AFXPLT11	3.82m	2.69m	11	26.0kg	800mm	2325mm

LOW LEVEL PLATFORMS



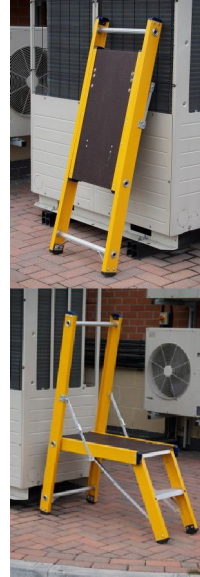
B-DEK

A simple, non-conductive platform for use anywhere. Made from high quality, BS compliant raw materials

The platform height is approx 450mm but can be made to your own specifications

The platform is 600mm x 340mm

In general accordance with EN131, ANSI 14-5 and ESI 13-1 but is not Kitemarked

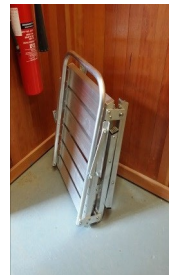
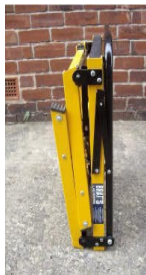


StepUp

Manufactured from BS compliant raw materials, with heavy duty non-conductive Glassfibre and Aluminium frames, recycled plastic non slip platform, safety handrail, locking hinges and folds flat for storage.

Open - 600mm x 460 mm platform x 500mm high.

Closed - 650mm x 500mm x 200mm.



TIMBER INDEX

Single Section Ladder	17
Double Extension Ladder	17
Triple Extension Ladder	18
Window Cleaning 'A' Ladders	19
Roof Ladder	20
Fruit Picking Ladders	21
Shelf Ladder	22-23
Double Sided Step	23
Swingback Step	24
Folding Platform Step	24
Folding Trestle	25
Staging	25
Fixed Platform Steps	26
Loft Ladder	19

SPECIFICATIONS

Ladders

Stiles: 72 x 32mm Douglas Fir / Hemlock

Rung: Barrelled shaped American Ash Fit-

tings: Steel BZP rust proofed Polyurethane
exterior varnish finished

BS 1129 Class 1 Industrial Designed For Heavy Industrial Use
(unless where indicated with *)

Steps

Stiles: 72 x 28mm or 32mm Douglas Fir / Hemlock

Treads: 90 x 22mm Douglas Fir / Hemlock Backleg:

Mortise and tenoned for long life 67° Douglas Fir /

Hemlock Tread Serrated For Grip Platform Steps:

Rear Cross Braces Varnished finished

Manufactured to BS 1129 Class 1 Industrial Designed For
Heavy Industrial Use (unless where indicated with *)

SINGLE SECTION LADDER

SINGLE SECTION LADDER

For timber specification refer to page 16

⇒ Optional tie rods every rung add a T to the code

e.g. HDS08T

⇒ All items listed here are manufactured to BS 1129 class1 industrial unless marked *

ORDERING CODES	TRADE	OVERALL LENGTH	EXTERNAL WIDTH	No. OF RUNGS	APPROX. WEIGHT
CLASS 1					
HDS08	GPS08*	2.36m	385mm	9	8.0kg
HDS10	GPS10*	3.00m	385mm	11	9.0kg
HDS12	GPS12*	3.63m	385mm	13	12.0kg
HDS14	GPS14*	4.19m	385mm	16	14.0kg
HDS16	GPS16*	4.75m	385mm	18	16.0kg
HDS18		5.41m	385mm	21	20.0kg
HDS20		6.00m	385mm	23	23.0kg



HDS/GPS
Range

TIMBER

DOUBLE SECTION LADDER

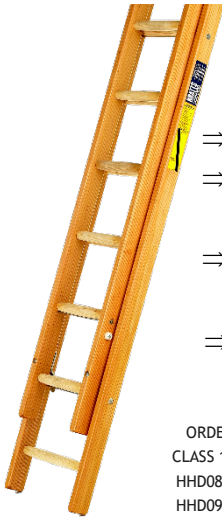
For timber specification refer to page 16

⇒ Clutch operation fitted as standard on HHD14 and over.

⇒ Optional tie rods every rung add a 'T' to the code e.g. HHD08T

⇒ Optional rope operation add a 'R' to the code e.g. HHD08R

⇒ All items listed here are manufactured to BS 1129 class1 industrial unless marked *



HHD/GPD
Range

ORDERING CODES	TRADE	OVERALL LENGTH	EXTENDED LENGTH	OVERALL WIDTH	No. OF RUNGS	APPROX WEIGHT
CLASS 1						
HHD08	GPD08*	2.36m	4.14m	385mm	9	15.0kg
HHD09	GPD09*	2.67m	4.80m	385mm	10	17.0kg
HHD10	GPD10*	3.00m	5.41m	385mm	11	18.0kg
HHD11	GPD11*	3.28m	5.79m	385mm	12	21.0kg
HHD12	GPD12*	3.63m	6.68m	385mm	13	24.0kg
HHD14	GPD14*	4.19m	7.70m	385mm	16	29.0kg
HHD16	GPD16*	4.75m	8.71m	385mm	18	34.0kg
HHD18		5.41m	9.98m	385mm	21	43.0kg
HHD20		6.00m	11.0m	385mm	23	52.0kg



TRIPLE EXTENSION LADDER

HDT/GPT
Range



TRIPLE SECTION LADDER



For timber specification refer to page 16

- ⇒ Clutch operation fitted as standard on HDT12 and over
- ⇒ Optional tie rods every rung add a 'T' to the code e.g. HDT08T
- ⇒ Optional rope operation add a 'R' to the code e.g. HDT08R
- ⇒ All items listed here are manufactured to BS 1129 class1 industrial unless marked *

N.B. Please specify when ordering if ladders are to be used for live electrical work

ORDERING CODES		OVERALL LENGTH	EXTENDED LENGTH	OVERALL WIDTH	No. OF RUNGS	APPROX. WEIGHT	
CLASS 1	TRADE					HDT	GPT
HDT08	GPT08*	2.36m	5.41m	385mm	9	28.0Kg	20.0Kg
HDT10	GPT10*	3.00m	7.70m	385mm	10	30.0Kg	25.0Kg
HDT12R	GPT12*	3.63m	9.22m	385mm	13	38.0Kg	30.0Kg
HDT14R		4.19m	10.m	385mm	16	47.0Kg	
HDT16R		4.75m	12.80m	385mm	18	70.0Kg	
HDT18R		5.41m	14.30m	385mm	21	90.0Kg	
HDT20R		6.00m	15.82m	385mm	23	101.0Kg	

WINDOW CLEANING 'A' LADDERS

SINGLE / DOUBLE

SINGLE SECTION LADDER

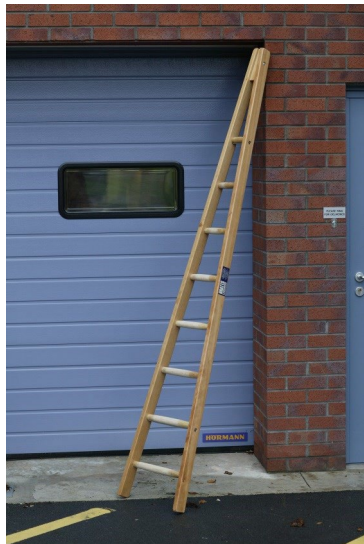
⇒ Stiles 64 x 28

Douglas Fir / Hemlock

ORDERING CODES	OVERALL LENGTH	No. OF RUNGS	APPROX WEIGHT
WCP07	2.03m	6	6.0kg
WCP08	2.36m	7	7.0kg
WCP09	2.67m	8	8.0kg
WCP10	3.00m	9	9.0kg
WCP11	3.28m	10	10.0kg
WCP12	3.63m	13	11.0kg



WCPD Range



WCP Range

DOUBLE SECTION LADDER

⇒ Base splayed for stability

⇒ Optional rubber top block

ORDERING CODES	OVERLL LENGTH	EXTENDED LENGTH	No. OF RUNGS	APPROX WEIGHT
WCPD08	2.36m	4.14m	7	13.0kg
WCPD09	2.67m	4.80m	8	15.0kg
WCPD10	3.00m	5.41m	9	19.0kg
WCPD11	3.28m	5.79m	10	22.0kg
WCPD12	3.63m	6.68m	13	25.0kg

ROOF LADDER

ROOF LADDER

ROOF LADDER HEAD UNIT

ORDERING CODES	OVERALL LENGTH	APPROX WEIGHT
RL10H	3.58m	14.0kg
RL12H	3.96m	15.0kg
RL14H	4.72m	17.0kg
RL16H	5.10m	19.0kg
RL18H	5.50m	21.0kg

- ⇒ Steel ridge hook
- ⇒ Large rubber tyre wheels
- ⇒ Douglas Fir/Hemlock rails 45mm x 22mm
- ⇒ Also available as articulated ladder



RL Range

ROOF LADDER EXTENSION SECTIONS

ORDERING CODES	OVERALL LENGTHS	APPROX WEIGHT
RLEX5	1.52m	7.0kg
RLEX7	2.28m	9.0kg
RLEX10	3.05m	12.0kg



HIPRL Range



HIP ROOF LADDER HEAD UNIT

ORDERING OVERALL APPROX.
CODES LENGTH WEIGHT

ORDERING CODES	OVERALL LENGTHS	APPROX WEIGHT
HIPRL10H	3.58m	18.0kg
HIPRL12H	3.96m	19.0kg
HIPRL14H	4.72m	21.0kg
HIPRL16H	5.10m	23.0kg
HIPRL18H	5.50m	25.0kg

FRUIT PICKING LADDER / DOUBLE SIDED STEP

FRUIT PICKING LADDER

- ⇒ Pointed Top
- ⇒ Wide splayed Base
- ⇒ Optional hooks at top

ORDERING CODE	VERTICAL HEIGHT TO PLATFORM	APPROX WEIGHT
FP08	2.36mts	8kgs
FP10	3.00mts	9kgs
FP12	3.63mts	12kgs
FP14	4.19mts	14kgs
FP16	4.75mts	16kgs
FP18	5.41mts	20kgs
FP20	6.00mts	23kgs



FP Range

TIMBER



⇒ We also manufacture
Apple trays and timber fold
away garden furniture to order

Contact us with any bespoke
project and our team will be
more than happy to help.

S H E L F L A D D E R

SHELF LADDER

- ⇒ Horizontal top rail
- ⇒ Splayed or parallel as required

ORDERING CODES	OVERALL LENGTH	APPROX WEIGHT
SL07	1.97m	5.0kg
SL08	2.25m	6.0kg
SL09	2.47m	7.0kg
SL10	2.72m	8.0kg
SL11	2.97m	10.0kg
SL12	3.22m	11.0kg
SL13	3.47m	12.0kg



SL Range



SL Fixed Step



SL Counterbalanced Ladder

S H E L F L A D D E R / D O U B L E S I D E D S T E P



Rolling Shelf Ladders
Material of your choice
Full Engineered Bracketry to suit

TIMBER

DOUBLE SIDED STEP

- ⇒ Heavy duty locking hinge
- ⇒ Manufactured in accordance with BS 1129 Class 1 Ind



DSFS Range

ORDERING CODES	No. OF TREADS	OVERALL LENGTH	APPROX WEIGHT
DSFS03	3	0.84m	10.0kg
DSFS04	4	1.09m	11.0kg
DSFS05	5	1.35m	13.0kg
DSFS06	6	1.60m	14.0kg
DSFS07	7	1.85m	16.0kg
DSFS08	8	2.11m	18.0kg
DSFS09	9	2.36m	22.0kg
DSFS10	10	2.61m	25.0kg
DSFS11	11	2.87m	29.0kg
DSFS12	12	3.12m	33.0kg

SWINGBACK AND PLATFORM STEPS

SWINGBACK STEP

- ⇒ Manufactured in accordance with BS 1129 Class 1 Ind
- ⇒ Mortised & tenoned back rails for prolonged life
- ⇒ Treads spaced at 250mm center
- ⇒ Lightweight version available

ORDERING CODES	No. OF TREADS	OVERALL LENGTH	APPROX WEIGHT
HPS03	3	0.72m	7.0kg
HPS04	4	0.97m	8.0kg
HPS05	5	1.22m	9.0kg
HPS06	6	1.47m	10.0kg
HPS07	7	1.72m	11.0kg
HPS08	8	1.97m	13.0kg
HPS09	9	2.25m	16.0kg
HPS10	10	2.47m	20.0kg
HPS11	11	2.72m	24.0kg
HPS12	12	2.97m	28.0kg



HPS Range

FOLDING PLATFORM STEP

- ⇒ Manufactured in accordance with BS 1129 Class 1 Ind
- ⇒ Screwed and glued back rails
- ⇒ Robust self-locking platform
- ⇒ Lightweight version if required



FPS Range

ORDERING CODES	No. OF TREAD	OVERALL LENGTH	HEIGHT TO PLATFORM	APPROX WEIGHT
FPS04	4	1.62m	0.91m	11.0Kg
FPS05	5	1.88m	1.14m	13.0Kg
FPS06	6	2.13m	1.37m	14.0Kg
FPS07	7	2.39m	1.63m	16.0Kg
FPS08	8	2.84m	1.84m	18.0Kg
FPS09	9	3.10m	2.06m	20.0Kg
FPS10	10	3.35m	2.34m	25.0Kg
FPS11	11	3.61m	2.56m	30.0kg
FPS12	12	3.86m	2.79m	33.0kg
FPS13	13	4.10m	3.02m	36.0kg
FPS14	14	4.37m	3.27m	40.0kg
FPS15	15	4.62m	3.50m	45.0kg

FOLDING TRESTLE / STAGING

STAGING

ORDERING CODES	OVERALL LENGTH	APPROX WEIGHT	⇒	Wire reinforced
LS06	1.78m	7.0kg	⇒	Easily repaired decking
LS08	2.39m	8.0kg		
LS10	2.97m	11.0kg		
LS12	3.58m	14.0kg		
LS14	4.19m	16.0kg		
LS16	4.80m	20.0kg		
LS18	5.41m	24.0kg		
LS20	6.01m	28.0kg		
LS22	6.63m	33.0kg		



FOLDING TRESTLE

- ⇒ Manufactured in accordance with BS 1129 Class 1 Ind
- ⇒ Heavy duty locking hinge
- ⇒ Morticed and tennoned rails
- ⇒ Lightweight version if required



ORDERING CODES	OVERALL LENGTH	APPROX WEIGHT
PT06	1.78m	18.0kg
PT08	2.38m	23.0kg
PT10	2.97m	26.0kg
PT12	3.58m	35.0kg
PT14	3.96m	42.0kg
PT16	4.80m	49.0kg

TIMBER

FIXED SINGLE AND DOUBLE SIDED PLATFORM STEPS

Library Step



- ⇒ Solid and stable fixed platforms
- ⇒ Various platform sizes
- ⇒ Manufactured from Douglas Fir / Hemlock but other materials upon request
- ⇒ Handrails can be fitted to any or all the three sides of the platform



OPTIONAL EXTRAS

- ⇒ WHEELS FIXED AXLE WITH HANDLES
- ⇒ HAND POLE ONLY

SS Range



ORDERING CODES		APPROX HEIGHT	NO. OF TREADS INC P/FORM
SINGLE SIDED	DOUBLE SIDED		
SS02	DSS02	.45mm	2
SS03	DSS03	.68mm	3
SS04	DSS04	.93mm	4
SS05	DSS05	1.20mm	5
SS06	DSS06	1.45mm	6
SS07	DSS07	1.70mm	7
SS08	DSS08	1.88mm	8
SS09	DSS09	2.13mm	9
SS10	DSS10	2.36mm	10
SS11	DSS11	2.59mm	11
SS12	DSS12	2.78mm	12

LOFT LADDERS

LOFT LADDER

- ⇒ Supplied complete with timber frame outside measurements 540mm x 1130mm
- ⇒ Fully insulated trap door (30mm thick)
- ⇒ Fully assembled for quick and simple fitting



CODES	DESCRIPTION
TMM26	MIDMADE LOFT LADDER
TMM26X	EXTENSION SECTION FOR CEILING HEIGHTS OF 3.20M
TMH26	MIDMADE HANDRAIL

ALUMINIUM INDEX

<u>Single Section Ladder</u>	<u>29</u>
Double Extension Ladder	29
<u>Triple Extension Ladder</u>	<u>30</u>
<u>D Rung Trade Ladders</u>	<u>31</u>
<u>Roof Ladder & Extensions</u>	<u>32</u>
<u>Combination Ladders</u>	<u>33</u>
Window Cleaning 'A' ladders	34
Surveyors Ladders	35
Fruit Pickers Ladder	35
<u>Shelf Ladder</u>	<u>35</u>
<u>Folding Platform Steps</u>	<u>36</u>
<u>Swingback Steps</u>	<u>37-38</u>
<u>Double Sided Step</u>	<u>38</u>
<u>Fixed Platform Steps</u>	<u>39</u>
Combination & Multipurpose ladders	40
Telescopic Ladders	41
<u>Loft Ladders</u>	<u>42</u>
<u>National Grid Ladders & Fittings</u>	<u>43</u>

SPECIFICATIONS

Ladders

Ladders manufactured from hollow seamless Aluminium extrusions with radiused corners for extra strength

Sizes vary in depth and width according to size of ladder

Rungs either 24mm or 30mm diameter serrated tube fitted through stiles at a standard rise of 250mm by a special locking method to prevent turning and for increased strength

Ends of ladder stiles fitted with rubber plugs (Kitemarked where indicated) manufactured to BS2037 Class 1 Industrial

Designed For Heavy Industrial Use and also EN131 trade and professional

Steps

Manufactured from Aluminium channels

fitted with 80/89mm deep treads fitted at a standard rise of 254mm ends fitted with rubber plugs

Rear Cross diagonal braces for extra life

(Kitemarked where indicated) BS 2037 Class 1 Industrial
Designed For Heavy Industrial Use and also EN131 trade and professional

SINGLE & DOUBLE EXTENSION LADDER

SINGLE SECTION LADDER

- ⇒ Can be manufactured to customers own requirements
- ⇒ Manufactured to BS2037 Class 1 Industrial

ORDERING CODES	OVERALL LENGTH	INTERNAL WIDTH	EXTERNAL WIDTH	No. OF RUNGS	WEIGHT
SA1.5MK	1.55m	278mm	323mm	6	3kg
SA2.0MK	2.05m	278mm	323mm	8	4kg
SA2.5MK	2.55m	278mm	323mm	10	5kg
SA3.0MK	3.05m	278mm	323mm	12	6kg
SA3.5MK	3.55m	278mm	323mm	14	7kg
SA4.0MK	4.05m	278mm	323mm	16	8kg
SA4.5MK	4.55m	278mm	323mm	18	9kg
SA5.0ML	5.05m	278mm	323mm	20	12kg
SA5.5MF	5.55m	267mm	324mm	22	16kg
SA6.0MF	6.05m	267mm	324mm	24	18kg
SA7.0MF	7.05m	267mm	324mm	28	20kg
SA8.0MJ	8.05m	280mm	344mm	32	32kg
SA9.0MJ	9.05m	280mm	344mm	36	36kg
SA10.0MJ	10.05m	280mm	344mm	40	40kg

DOUBLE EXTENSION LADDER

- ⇒ Can be manufactured to customers own requirements
- ⇒ Manufactured to BS2037 Class 1 Industrial but not those marked with *
- ⇒ Rope operation can be fitted to ladders with the reference letters L-E-F-J
- ⇒ Rope operated ladders have a special type of swing clutch complete with side operated ropes and pulleys
- ⇒ Rope operation CANNOT be fitted afterwards to push-up extension ladders

REFERENCE	LENGTH	EX. HT	NO. OF RUNGS	WEIGHT
CLASS 1 IND STD PATTERN				
DE2.0MK	2.05mts	3.58mts	16	9kgs
DE2.5MK	2.55mts	4.58mts	20	11kgs
DE3.0ML	3.05mts	5.55mts	24	15kgs
DE3.5ML	3.55mts	6.55mts	28	17kgs
DE4.0ME	4.05mts	7.55mts	32	23kgs
DE4.0MF	4.05mts	7.55mts	32	27kgs
DE4.5ME	4.55mts	8.55mts	36	26kgs
DE4.5MF	4.55mts	8.55mts	36	30kgs
DE5.0MF	5.05mts	9.30mts	40	33kgs
DE5.5MF	5.55mts	10.05mts	44	36kgs
DE6.0MJ	6.05mts	11.05mts	47	52kgs
DE6.5MJ	6.55mts	11.75mts	51	56kgs
DE7.0MJ	7.05mts	12.75mts	57	63kgs
DE3.0MK	3.05mts	5.58mts	24	13kgs
DE4.0ML	4.05mts	7.30mts	32	19kgs
DE4.5ML	4.55mts	8.30mts	36	21kgs
DE5.0ML	5.05mts	9.30mts	40	23kgs
DE6.0MF	6.05mts	11.05mts	48	39kgs
DE6.5MF	6.55mts	11.75mts	52	42kgs

Add 'R' to codes for rope operation, e.g. DE4.5MFR



DE Range

ALUMINIUM

TRIPLE EXTENSION LADDER



TRIPLE EXTENSION LADDER

- ⇒ Manufactured to BS2037 Class 1 Industrial
- ⇒ Rope operation can be fitted as an option
- ⇒ Rope operated ladders have a special type of auto swing clutch complete with side operated ropes and pulleys
- ⇒ Rope operation CANNOT be fitted afterwards to push-up extension ladders



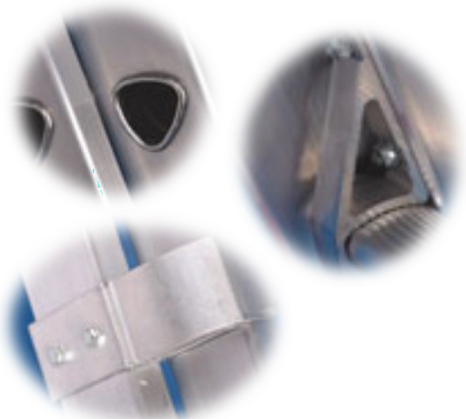
TE Range

REFERENCE	LENGTH	EX. HT	NO. OF RUNGS	WEIGHT
CLASS 1 IND				
TE2.0MD	2.05mts	4.80mts	23	17kgs
TE2.5MD	2.55mts	6.30mts	29	21kgs
TE3.0MF	3.05mts	7.30mts	35	32kgs
TE3.5MF	3.55mts	8.80mts	41	37kgs
STD PATTERN				
TE3.0MD	3.05mts	7.30mts	35	24kgs
TE3.5MD	3.55mts	8.80mts	41	27kgs
TE4.0MF	4.05mts	10.30mts	47	42kgs
TE4.5MF	4.55mts	11.80mts	53	47kgs
TE5.0MF	5.05mts	13.30mts	59	52kgs
TE6.0MJR	6.05mts	15.80mts	69	87kgs
TE7.0MJR	7.05mts	18.80mts	81	101kgs

Add 'R' to codes for rope operation, e.g. TE3.0MFR * Products not BS2037 Class 1 Industrial are manufactured with the same quality materials and in compliance with the BS EN ISO 9002 Quality System

“D” RUNG TRADE LADDERS

- ⇒ Ladders manufactured from hollow seamless Aluminium box section (sizes vary according to size of ladder)
- ⇒ Large ‘D’ shaped rungs fitted at 75° working angle by a special locking method for increased strength and to prevent turning
- ⇒ Ends of ladders fitted with rubber plugs



ALUMINIUM SINGLE EXTENSION 'D' RUNG LADDERS

REFERENCE	OVERALL LENGTH	WIDTH	WIDTH	RUNGS	WEIGHT
TDS 20	1.85m	280mm	340mm	6	4.5kg
TDS 25	2.50m	280mm	340mm	8	5.5kg
TDS 30	3.05m	280mm	340mm	10	7kg
TDS 35	3.65m	280mm	340mm	12	8kg
TDS 40	4.00m	280mm	340mm	13	10kg
TDS 45	4.55m	280mm	340mm	15	11kg
TDS 50	5.15m	280mm	340mm	17	14kg
TDS 55	5.75m	280mm	340mm	19	15k

ALUMINIUM DOUBLE EXTENSION 'D' RUNG LADDERS

REFERENCE	OVERALL LENGTH	EXTENDED HEIGHT	INTERNAL WIDTH	EXTERNAL WIDTH	No. RUNGS	WEIGHT
TDD 20	1.85m	3.00m	280mm	410mm	12	9.5kg
TDD 25	2.50m	4.20m	280mm	410mm	16	11kg
TDD 30	3.05m	5.40m	280mm	410mm	20	13.5kg
TDD 35	3.65m	6.60m	280mm	410mm	24	15.5kg
TDD 40	4.00m	7.20m	280mm	410mm	26	20kg
TDD 45	4.55m	8.40m	280mm	410mm	30	24.5kg
TDD 50	5.15m	9.30m	280mm	410mm	34	28kg
TDD 55	5.75m	10.4m	280mm	410mm	38	30kg

ALUMINIUM TRIPLE EXTENSION 'D' RUNG LADDERS

REFERENCE	OVERALL LENGTH	EXTENDED HEIGHT	INTERNAL WIDTH	EXTERNAL WIDTH	No. RUNGS	WEIGHT
TTD 20	1.85m	4.20m	280mm	480mm	18	13kg
TTD 25	2.50m	6.00m	280mm	480mm	24	17kg
TTD 30	3.05m	7.80m	280mm	480mm	30	20kg
TTD 35	3.60m	9.60m	280mm	480mm	36	28.5kg
TTD 40	4.00m	10.5m	280mm	480mm	39	30kg



TDD Range

ALUMINIUM

ROOF LADDER & EXTENSIONS



ARL Range

- ⇒ Ladders manufactured from Single Section models (SA)
- ⇒ Tubular steel ridge hook complete with runner wheels
- ⇒ Rubber covered cross supports
- ⇒ Ends of ladders fitted with rubber plugs
- ⇒ Double Extension Roof Ladders also available ask our sales department for details
- ⇒ Extensions manufactured from Single Section models (SA). Fitted with sleeved joining plates and rubber covered supports on under-side

REFERENCE	LADDER-LENGTH	OVERALL LENGTH	WIDTH AT BASE
ARL3.5MK	3.53m	4.10m	545mm
ARL4.0MK	4.03m	4.60m	545mm
ARL4.5MK	4.53m	5.10m	545mm
ARL5.0ML	5.03m	5.60m	545mm
ARL5.5ML	5.53m	6.10m	545mm
ARL6.0ML	6.03m	6.60m	545mm
ARL6.5ML	6.53m	7.10m	545mm



LIGHT DUTY ROOF LADDER

⇒ Wide, serrated flat top rungs

⇒ Aluminium ridge hook

⇒ Alloy support brackets, rubber sleeved

HEAD SECTIONS

REFERENCE	LENGTH	WEIGHT
ARL12	3.66m	11.3kg
ARL14	4.27m	13.6kg
ARL16	4.88m	14.5kg
ARL18	5.50m	16.3kg
ARL20	6.08m	18.2kg

EXTENDING ROOF LADDER

REFERENCE	LENGTH	LENGTH
AXR34D	3.4m	6.0m
AXR39D	3.9m	7.0m



D.ARL Range

ARL EXTENSION SECTIONS

REFERENCE	LADDER LENGTH	RUNGS	WEIGHT
2.0 ext	2.00m	8	12kg
2.5 ext	2.50m	10	13kg
3.0 ext	3.00m	12	14kg
3.5 ext	3.50m	14	17kg

DOUBLE EXTENSION ROOF LADDERS

REFERENCE	CLOSED LENGTH	EXT LENGTH	RUNGS TOP	RUNGS BOTTM	WEIGHT
D.ARL2.75MK	3.30m	4.70m	9	7	15kg
D.ARL3.35MK	3.90m	5.90m	11	9	18kg
D.ARL3.95MK	4.50m	7.10m	13	11	21kg
D.ARL4.5MK	5.10m	8.30m	15	13	24kg

T:0115 9866 851

E:SALES@BRATTSLADDERS.COM

COMBINATION LADDERS

2 PART COMBINATION LADDER

- ⇒ This ladder can be used as a Double Extension Ladder with splayed base, or a Step Ladder or as two Single Section Ladders
- ⇒ Manufactured from hollow seamless Aluminium extrusions with radiused corners for extra strength
- ⇒ Ends of ladder stiles fitted with rubber feet



HL Range

REFERENCE	OVERALL CLOSED LENGTH	EXTENDED HEIGHT	NO. OF RUNGS	OVERALL SPAN	MAX WIDTH	WEIGHT
HL2.0MK	2.05mts	3.55mts	15	1.52M	640MM	11kgs
HL2.5MK	2.55mts	4.55mts	19	1.89M	640MM	13kgs
HL3.0MK	3.05mts	5.55mts	23	2.26M	640MM	15kgs



LST Range

LADDA-STEP

Designed to be used as a stepladder or a small extension ladder, this product is made from quality Aluminium extrusions. Treads are 89mm deep. Rungs are of 24mm corrugated tube fitted at 254mm. Fitted with rubber feet

Conforming to BS2037 Class 1 Industrial

Reference	Closed Length	Open Step Height	Ext. Length	Overall Width	Overall Span	Weight
LST05	1.35mts	1.13mts	2.15mts	515mm	1.21M	11KG
LST06	1.60mts	1.38mts	2.40mts	540mm	1.45m	12kg
LST07	1.85mts	1.63mts	2.65mts	565mm	1.63m	13kg
LST08	2.10mts	1.88mts	2.90mts	590mm	1.78m	14kg

WINDOW CLEANERS “A” LADDERS SINGLE / DOUBLE SECTION

SINGLE SECTION WINDOW CLEANING LADDER

- ⇒ Rectangular Box section Stiles
- ⇒ Round Rung
- ⇒ Splayed Base
- ⇒ Fitted Rubber Block

REFERENCE	LENGTH	BASE WIDTH	No. OF RUNGS	WEIGHT
* SWC2.0MK	2.05m	440mm	7	4.5kg
* SWC2.5MK	2.55m	525mm	9	5.5kg
* SWC3.0MK	3.05m	545mm	11	6.5kg
* SWC3.5MK	3.55m	610mm	13	7.5kg



DWC Range

DOUBLE EXTENSION WINDOW CLEANING LADDER

- ⇒ Auto Clutch
- ⇒ Splayed Base
- ⇒ Manufactured from class1 materials

REFERENCE	CLOSED LENGTH	EXTENDED HEIGHT	WIDTH AT BASE	NO. OF RUNGS	WEIGHT
* DWC2.0MK	2.05m	3.58m	545mm	15	9.5kg
* DWC2.5MK	2.55m	4.58m	545mm	19	11.5kg
* DWC3.0MK	3.05m	5.58m	545mm	23	13.5kg
* DWC3.5ML	3.55m	6.58m	545mm	27	17.5kg
* DWC4.0ML	4.05m	7.58m	545mm	31	19.5kg
* DWC4.5ML	4.55m	8.58m	545mm	35	21.5kg
* DWC5.0ML	5.05m	9.58m	545mm	39	23.5kg

SURVEYORS / FRUIT PICKER / SHELF LADDERS



SER Range

SURVEYORS LADDER

- ⇒ Ideal for inspection purposes
- ⇒ Easily Assembled
- an be stored in a car boot

REFERENCE	NUMBER OF SECTIONS	LENGTH	No. OF RUNGS	WEIGHT
SER1	1	0.9m	4	2kg
SER2	2	1.8m	8	4kg
SER3	3	2.7m	12	6kg
SER4	4	3.6m	16	8kg
SER5L	5	4.5m	20	12kg
SER6L	6	5.4m	24	15kg

FRUIT PICKER LADDER

- ⇒ Rectangular Box section Stiles
- ⇒ Round Rung
- ⇒ Splayed Base
- ⇒ Fitted Rubber Block

REFERENCE	O/ALL LENGTH	No. OF TREADS	WEIGHT
FP4.0MK	4.05m	16	8kg
FP4.5MK	4.55m	18	9kg
FP5.0ML	5.05m	20	12kg
FP5.5ML	5.55m	22	13kg
FP6.0ML	6.05 m	24	14kg
FP6.5ML	6.55m	26	1 kg



FP Range



ASL Range

SHELF LADDER

- ⇒ Parallel sided shelf ladder
- ⇒ 89mm deep treads
- ⇒ Overall width 362mm

REFERENCE	LENGTH	No. OF TREADS	WEIGHT
ASL6	1.524m	6	5kg
ASL7	1.778m	7	5.5kg
ASL8	2.032m	8	6kg
ASL9	2.286m	9	6.5kg
ASL10	2.540m	10	7kg
ASL11	2.794m	11	7.5kg
ASL12	3.048m	12	8kg
ASL13HD	3.302m	13	10kg
ASL14HD	3.556m	14	11kg
ASL15HD	3.810m	15	12kg
ASL16HD	4.064m	16	13kg

ALUMINIUM

FOLDING PLATFORM STEPS

TRADE PATTERN PLATFORM STEPS

- ⇒ Platform 330mm X 255mm
- ⇒ 89mm deep treads
- ⇒ Manufactured to BS2037 Class 1 & BS EN131

REF.	CLOSED LENGTH	HEIGHT TO PLATFORM	No. TREADS INC PLATFORM	WEIGHT	O/ALL WIDTH	O/ALL SPAN
TALPS2	1.240m	.605m	2	5kgs	.400	.670m
TALPS3	1.49m	.725m	3	7kgs	.425m	.830m
TALPS4	1.75m	.960m	4	8kgs	.450m	1.000m
TALPS5	2.00m	1.195m	5	9kgs	.475m	1.170m
TALPS6	2.26m	1.430m	6	10kgs	.500m	1.345m
TALPS7	2.51m	1.665m	7	11kgs	.525m	1.513m
TALPS8	2.77m	1.900m	8	12kgs	.550m	1.670m
TALPS9	3.02m	2.135m	9	13kgs	.575m	1.850m
TALPS10	3.27m	2.370m	10	14kgs	.600m	2.015m



TALPS Range

INDUSTRIAL HEAVY DUTY PLATFORM STEPS

- ⇒ Platform 406mm x 305mm
- ⇒ 89mm deep treads
- ⇒ Manufactured to BS2037 Class 1, unless marked *



AFS Range

AFS3	1.32m	.725m	3	11kg	.495m.
AFS4	1.57m	.960m	4	12kg	.520m.
AFS5	1.82m	1.195m	5	13kg	.545m
AFS6	2.07m	1.430m	6	14kg	.570m
AFS7	2.32m	1.665m	7	15kg	.595m
AFS8	2.57m	1.900m	8	16kg	.620m
AFS9	2.82m	2.135m	9	17kg	.645m
AFS10	3.07m	2.370m	10	18kg	.670m
AFS11	3.32m	2.605m	11	19kg	.695m
AFS12	3.57m	2.840m	12	20kg	.720m
AFS13	3.82m	3.075m	13	22kg	.745m
AFS14	4.07m	3.310m	14	29kg	.770m
AFS15	4.32m	3.545m	15	31kg	.795m
AFS16	4.57m	3.780m	16	34kg	.820m
*AFS17	4.82m	4.015m	17	36kg	.845m
*AFS18	5.07m	4.250m	18	38kg	.870m
*AFS19	5.32m	4.485m	19	40kg	.895m
*AFS20	5.57m	4.720m	20	45kg	.920m
*AFS21	5.82m	4.995m	21	47kg	.945m
*AFS22	6.07m	5.190m	22	49kg	.970m
*AFS23	6.32m	5.425m	23	52kg	.995m
*AFS24	6.57m	5.660m	24	54kg	1.020m

SWING BACK STEPS



TLAS Range

TRADE PATTERN SWINGBACK STEP

⇒ 89mm deep treads

⇒ Manufactured to BS2037 Class 1

& BS EN131

Ref.	Closed Length	Open Height	No of Treads	Span	Overall Width	Weight
T.LAS3	750mm	640mm	3	685mm	400mm	4kgs
T.LAS4	1000mm	865mm	4	820mm	425mm	5kgs
T.LAS5	1250mm	1105mm	5	915mm	450mm	6kgs
T.LAS6	1500mm	1335mm	6	1075mm	475mm	7kgs
T.LAS7	1750mm	1550mm	7	1230mm	500mm	8kgs
T.LAS8	2100mm	1800mm	8	1395mm	525mm	9kgs
T.LAS9	2260mm	2025mm	9	1555mm	550mm	10kgs
T.LAS10	2520mm	2260mm	10	1706mm	575mm	11kgs
T.LAS11	2770mm	2490mm	11	1870mm	600mm	12.5kgs
T.LAS12	3030mm	2720mm	12	2035mm	625mm	13.5kgs

TRADE PATTERN SWINGBACK STEP

⇒ 89mm deep treads

⇒ Manufactured to BS 2037 Class1

Ref.	Closed Length	Overall Height	No of Treads	Span	Overall Width	Weight
AS3	0.81 m	0.710 m	3	0.575m	.370 m	7kgs
AS4	1.07 m	0.945 m	4	0.740m	.395 m	8kgs
AS05	1.32 m	1.180 m	5	0.862m	.420 m	9kgs
AS06	1.58 m	1.415 m	6	1.030m	.445 m	10kgs
AS07	1.84 m	1.650 m	7	1.225m	.470 m	11kgs
AS08	2.10 m	1.885 m	8	1.395m	.495 m	12kgs
AS09	2.36 m	2.120 m	9	1.519m	.520 m	13kgs
AS10	2.62 m	2.355 m	10	1.683m	.545 m	14kgs
AS11	2.88 m	2.590 m	11	1.838m	.570 m	16kgs
AS12	3.14 m	2.828 m	12	1.999m	.595 m	18kgs
AS13	3.40 m	3.060 m	13	2.190m	.620 m	19kgs
AS14	3.66 m	3.295 m	14	2.355m	.645 m	20kgs
AS15	3.92 m	3.530 m	15	2.520m	.670 m	22kgs
AS16	4.18 m	3.765 m	16	2.685m	.695 m	25kgs
*AS17	4.44m	4.000 m	17	2.850m	.0720 m	26kgs
*AS18	4.70 m	4.235 m	18	3.015m	.745 m	29kgs
*AS19	4.96 m	4.470 m	19	3.180m	.770 m	32kgs
*AS20	5.22 m	4.705 m	20	3.345m	.795 m	35kgs



AS Range

ALUMINIUM

SWINGBACK / DOUBLE SIDED STEPS

SWINGBACK STEP

- ⇒ Alternative to TLAS model
- ⇒ 180mm wide top tread
- ⇒ 89mm deep treads
- ⇒ Manufactured to BS2037 Class 1



Ref.	Closed Length	Open Height	No of Treads	Span	Overall Width	Weight
ABS2	0.655m	0.478m	2	0.515m	0.460m	4kgs
ABS3	0.900m	0.718m	3	0.650m	0.480m	5kgs
ABS4	1.140m	0.940m	4	0.870m	0.500m	6kgs
ABS5	1.395m	1.190m	5	0.980m	0.550m	7kgs
ABS6	1.625m	1.425m	6	1.140m	0.570m	8kgs



DOUBLE SIDED STEP

- ⇒ Double sided folding step
- ⇒ 89mm deep treads
- ⇒ Manufactured to BS2037 Class 1

Ref.	Closed Length	Open Height	No of Treads	Span	Overall Width	Weight
DAS4	1.070m	0.945m	4	0.990m	0.390m	8kgs
DAS5	1.320m	1.180m	5	1.180m	0.415m	9kgs
DAS6	1.580m	1.415m	6	1.370m	0.440m	10kgs
DAS7	1.840m	1.650m	7	1.580m	0.465m	11kgs
DAS8	2.100m	1.885m	8	1.750m	0.490m	13kgs
DAS9	2.360m	2.120m	9	1.940m	0.515 m	14kgs
DAS10	2.620m	2.355m	10	2.130m	0.540m	15kgs

FIXED PLATFORM STEPS DOUBLE/SINGLE SIDED

DPS - RANGE



SINGLE SIDED

- ⇒ Single side fixed platform step
- ⇒ Platform 610mm x 380mm
- ⇒ 89mm deep treads
- ⇒ Variation can be made to order
- ⇒ Handrails fitted to various styles please state which side
- ⇒ Wheels optional extra
- ⇒ Handrails now fitted with kick plates

DOUBLE SIDED

- ⇒ Double sided fixed platform step
- ⇒ Platform 610mm x 405mm
- ⇒ 89mm deep treads
- ⇒ Variations can be made to order
- ⇒ Handrail can be fitted to one side or both
- ⇒ Handrail now fitted with kick plate

SINGLE SIDED

Ref.	Height to Platform	No. of Treads (inc. platform)	Weight	Maximum Overall Width	Maximum Overall Span
*DPS01	.240m	1	6kgs	.415m	.740m
*DPS02	.475m	2	7kgs	.435m	.835m
*DPS03	.710m	3	9kgs	.460m	.945m
*DPS04	.945m	4	10kgs	.485m	1.060m
*DPS05	1.180m	5	11kgs	.510m	1.170m
*DPS06	1.415m	6	12kgs	.535m	1.290m
*DPS07	1.645m	7	14kgs	.565m	1.400m
*DPS08	1.880m	8	15kgs	.590m	1.510m

DOUBLE SIDED

Ref.	Height to Platform	No. of Treads inc Platform	Weight	Maximum Overall Width	Maximum Overall Span
*DPD02	0.475 m	2	8 kgs	0.435m	1.010
*DPD03	0.710m	3	10 kgs	0.460m	1.205
*DPD04	0.945m	4	12 kgs	0.485m	1.405
*DPD05	1.180m	5	15 kgs	0.510m	1.600
*DPD06	1.415m	6	17 kgs	0.535m	1.800
*DPD07	1.645m	7	19 kgs	0.565m	2.000
*DPD08	1.880m	8	23 kgs	0.590m	2.200



DPD - RANGE

ALUMINIUM

COMBINATION AND MULTIPURPOSE LADDERS



THREE WAY COMBINATION LADDER

3 SECTION PUSH-UP - TRADE PATTERN

CODE NO	CLOSED	STANDING	EXTENDED	RUNGS	WEIGHT
REF20T	2.00M	2.95M	4.24M	7	10.6KGS
REF26T	2.56M	4.00M	5.90M	9	15.5KGS
REF31T	3.12M	4.80M	7.32M	11	18.7KGS
REF36T	3.40M	5.60M	8.44M	12	22.5KGS

3 SECTION PUSH-UP - INDUSTRIAL PATTERN

CODE NO	CLOSED	STANDING	EXTENDED	RUNGS	WEIGHT
REF17T	1.72M	2.42M	3.40M	6	9.4KGS

MULTI-PURPOSE FOLDING



FEATURES

- ⇒ All aluminium telescopic step & ladder
- ⇒ Simple height adjustment with spring loaded catch
- ⇒ Easy & positive locking hinge
- ⇒ EN131 Trade Quality Duty Rating 150Kg

CODE NO	RUNGS	DIMENSIONS	WEIGHT
TGM44	4x4	Length as extension Ladder From 220 - 371cm	11KG
TGM45	4x5	Length as extension Ladder From 270 - 472cm	13KG

TELESCOPIC LADDER

Telemaster

One ladder with multiple telescopic height options

- ⇒ Rung by rung height adjustment
- ⇒ Treads lock automatically during extension
- ⇒ Extra wide treads are comfortable to use
- ⇒ Wear resistant with anodised stiles
- ⇒ Fits easily into car boot or cupboard
- ⇒ Weight rating 150 kg (23.6 stone)



Order No.	Overall length, extended (m)	Closed height (m)	Width (m)	Weight (kg)
100600	3.30	0.78	0.49	10.73
100601	3.80	0.84	0.51	13.71

LOFT LADDERS



Description

Five Sizes Available up to a maximum height of 3.66m. Spring controlled operation with three brackets. Treads 385mm wide x 90mm deep. Complete with one handrail, operating pole and all fixings.

WE DO NOT SUPPLY THE TRAP DOOR.

Competitive Prices for the best quality loft ladder you can buy !

Unsure which loft ladders you need?
CONTACT US

Ref.	Floor to Floor Height (C)	Storage Length Required (E)	Height Above Loft Floor Required (F)	Minimum Hatch Length (A)	Minimum Hatch Width (B)
AL1	up to 2.54mts (8'4)	1.37mts (4' 6)	889mm (2' 11)	762mm (2' 6)	558mm (1'10)
AL2	2.57/2.82mts (8'5/9'3)	1.37mts (4' 6)	812mm (2' 8)	762mm (2' 6)	558mm (1' 10)
AL3	2.84/3.10mts (9'4/10'2)	1.63mts (5' 4)	990mm (3' 3)	762mm (2' 6)	558mm (1'10)
AL4	3.12/3.38mts (10'3/11'1)	1.63mts (5'4)	914mm (3'0)	850mm (2'9 1/2)	558mm (1'10)
AL5	3.40/3.66mts (11'2/12'0)	2.03mts (6'8)	1.245mts (4'1)	850mm (2'9 1/2)	558mm



CONCERTINA LOFT LADDER

Supplied fully assembled for immediate installation

Space saving-fits loft opening down to 600mm x 500mm wide and requires almost no inside loft clearance

Spring controlled operation

Strong, safe construction with extra wide treads (80mm) for comfort

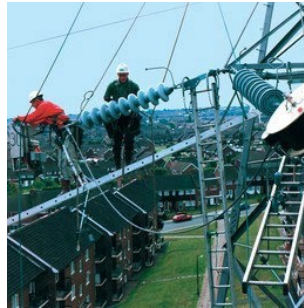
Complete with trap door hinges, catch and pole

REFERENCE	TREADS	HEIGHT
TAF10	10	For Ceiling Height 252-273cm
TAF11	11	For Ceiling Height 279-300cm

NATIONAL GRID LADDERS & FITTING

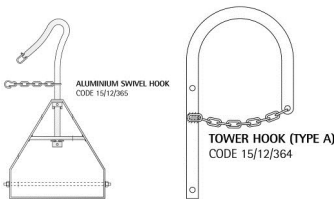
NATIONAL GRID LADDERS

- ⇒ Ladders manufactured from hollow Aluminium rectangular sections with radiused corners for extra strength
- ⇒ Rungs of 30mm dia. corrugated tube fitted through the stiles at a standard rise of 250mm by a special locking method to prevent turning and for increased strength
- ⇒ Overall width of ladder 355mm
- ⇒ Ends of ladders fitted with rubber plugs

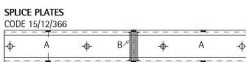
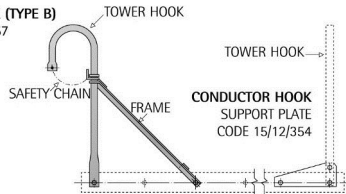


Ref.	No. of Rungs	Weight	Safe Working Load	Proof Load	Minimum Failing Load
15/12/376	15 Rungs	11 kgs	180 kgs	270 kgs	540 kgs
15/12/377	19 Rungs	21 kgs	180 kgs	270 kgs	540 kgs
15/12/378	21 Rungs	23 kgs	180 kgs	270 kgs	540 kgs
15/12/379	23 Rungs	23 kgs	180 kgs	270 kgs	540 kgs
15/12/382	12 Rungs	13 kgs	180 kgs	270 kgs	540 kgs
15/12/385 - Single Purpose	29 Rungs	31 kgs	675 kgs	1350 kgs	540 kgs
15/12/385 - Dual Purpose	29 Rungs	42kgs	180kgs	270kgs	540kgs

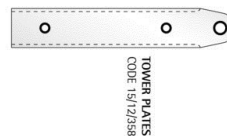
NATIONAL GRID FITTINGS



TOWER HOOK (TYPE B)
CODE 15/12/357



Ref.	Weight	Safe Working Load	Proof Load	Minimum Failing Load
15/12/358	3.5kg	225kg	335kg	675kg
15/12/357	13kg	180kg	270kg	540kg
15/12/354	1.5kg	180kg	270kg	540kg
15/12/366	12kg	90kg	135kg	270kg
15/12/364	6.5kg	225kg	335kg	675kg
15/12/365	3kg	180kg	270kg	540kg
15/12/353	3kg	180kg	270kg	540kg



WAREHOUSE STEPS INDEX

Alloy Mobile Warehouse Step	45
Steel Mobile Warehouse Step	45
Dispensary Step	45

SPECIFICATIONS

Materials Used

Steps are manufactured from ERW tube to BS6323 PARTS-ERW1-KM. The materials used in this range are recyclable. Together with our environmentally-friendly processes and practices we are consciously working towards a greener future for our customers, our community and ourselves.

Unique Safety Barrier

The Klime-Ezee 5 - 15 and E-Series 5 - 15 Tread steps are immobilised by a patented central fail-safe retractor mechanism which, when operated, performs the dual function of both acting as a braking system and at the same time forming a 'NO ACCESS' barrier across the steps, thus protecting the safety and welfare of your operative when using the equipment. The retractor gate is designed to lock the handle in position and is extremely light and easy to operate. The KE5 & KE6 have 2 x 100mm dia. rear wheels and a single front retractable castor. The KE7-KE15 steps have 2 x 120mm dia. rear wheels and 2 retractable front castors which are lifted from the floor by use of a centrally mounted 'Access Barrier' retractor handle, thus allowing the two large steel feet to impact with the floor to give maximum stability to your operator. The amply sized top platform with kicking flat makes order picking, shelf access or maintenance both comfortable and safe.

Tread Types

We offer two types of tread for our standard range of steps. They are manufactured from steel to BS1449 PART 1 1983 CR4. All treads give maximum grip in any environment.

'M' Tread - Multi-Pattern pierced and raised metal tread.

'P' Tread - PVC Anti-Slip covered metal tread.

Paint Finish

The finishing processes employed are universally applied in strict accordance with the manufacturers' guidelines. Our standard paint finish is applied using a reliable and efficient Electrostatic Paint Process. All products will be painted Pacific Blue as standard or Signal Red if requested. Other colours can be supplied at extra cost.

Step Mobility

All our steps are fitted with rubber-tyred wheels and castors, providing easy control and mobility. Indeed, a force of only 5-10Kg is required to move our steps. Customers will note that this is well below the 25Kg force determined by Health & Safety Executive.

WAREHOUSE STEPS

ALUMINIUM MOBILE WAREHOUSE STEP

REF.	HEIGHT TO PLATFORM	No. OF TREADS INC PLAT	WEIGHT	O/ALL HEIGHT	O/ALL WIDTH	O/ALL SPAN
AWS3	.720m	3	8Kg	1.432m	.630m	.995m
AWS4	.933m	4	10Kg	1.643m	.650m	1.110m
AWS5	1.170m	5	12Kg	1.884m	.670m	1.240m
AWS6	1.400m	6	14Kg	2.110m	.700m	1.350m
AWS7	1.635m	7	16Kg	2.342m	.720m	1.505m
AWS8	1.875m	8	19Kg	2.580m	.740m	1.600m
AWS9	2.095m	9	21Kg	2.805m	.770m	1.755m
AWS10	2.365m	10	24Kg	3.077m	.800m	1.835m
AWS11	2.560m	11	26Kg	3.270m	.820m	1.975m
AWS12	2.808m	12	29Kg	3.510m	.835m	2.110m
AWS13	2.043m	13	32Kg	3.750m	.855m	2.235m
AWS14	3.284m	14	35Kg	3.994m	.880m	2.360m
AWS15	3.525m	15	38Kg	4.235m	.905m	2.490m
AWS16	3.766m	16	41Kg	4.476m	.930m	2.620m
AWS17	3.975m	17	44Kg	4.665m	.975m	2.825m
AWS18	4.248m	18	47Kg	4.958m	.980m	2.950m
AWS19	4.480m	19	50Kg	5.190m	1.005m	3.075m
AWS20	4.730m	20	53Kg	5.440m	1.030m	3.200m

⇒ Heavy duty

⇒ Platform 530mm deep x 400mm wide

⇒ Treads 89mm deep

⇒ Handrail to both sides

⇒ Wheels at rear

⇒ 150kg rating



STEEL MOBILE WAREHOUSE STEP

⇒ Various sizes & models mobiles

⇒ Bespoke models available

REF.	P/FORM HT	O/ALL DEPTH	O/ALL WIDTH	KG
KE02	500	580	700	16
KE03	750	740	700	22
KE04	1000	900	700	26
KE05	1250	1110	835	36
KE06	1500	1270	835	40
KE07	1750	1350	850	62
KE08	2000	1510	850	66
KE09	2250	1670	850	70
KE10	2500	1840	1000	75
KE11	2750	2125	1000	86
KE12	3000	2270	1000	90
KE13	3250	2350	1160	108



DISPENSARY STEP

⇒ C/W hand pole

⇒ Light weight for easy positioning

⇒ Anti-slip treads

REF.	HEIGHT TO TOP TREAD	O/ALL DEPTH	O/ALL WIDTH	WEIGHT
2STEPDIS	450mm	500mm	450mm	6kg



WAREHOUSE STEPS

ACCESSORIES INDEX

Top Stability Devices	47
Pole Work Bows	48
Base Stability Devices	49
Miscellaneous Extras	50
Ladder Staging System	51

There are numerous ways in which we can now enhance the stability of ladders.

Adding a bracket to the top or bottom of a ladder will increase the overall stability greatly

The Working at Height Law requests that we use stability devices where practicable to do so.

SCHEDULE 6

REQUIREMENTS FOR LADDERS

5. A portable ladder shall be prevented from slipping during use by -
 - a) securing the stiles at or near their upper or lower ends;
 - b) an effective anti-slip or other effective stability device; or
 - c) any other arrangement of equivalent effectiveness.

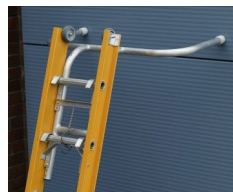
TOP STABILITY DEVICES



Type A - Detachable for wall and corner use



Type B - Fixed to ladder for wall and corner use



Type C - Detachable for wall use, wider than normal fitted with wheels



Type D - Detachable for use on cabin / flat wall



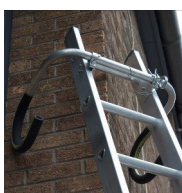
Type E - Detachable for use on columns / posts of varying sizes



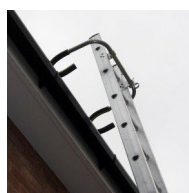
LSA1 - Standard Standoff Bracket



Type F - Fixed and detachable version rotating for wall, corner and roof use



Type F - on corner



Type F - on roof



Suction bracket to work on signage, glass ect.



Shafting Hooks of various sizes shapes for Timber & Glassfibre ladders

POLE WORK BOWS

POLE WORK BOWS

- ⇒ Various pole bows for different sized columns
- ⇒ Bows usually purchased with security rope and clamcleat
- ⇒ Suitable for most types of ladders



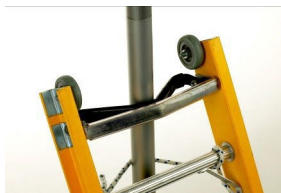
'A' Bow



'V' Bow



'WEB' Bow



'I' Bow



'B' Bow
(rubber lined)

BASE STABILITY DEVICES



**Open mesh
grid feet**



**Articulated
Octopus feet**

Suction feet



**Rubber blocks
for timber
ladders**



**Stopper Base
anti-slip**



**Laddermate
anti-slip device**



**Level-Eze
auto levelling
device**



**Trench Bracket
for Timber and Glassfibre ladders**



Ani-climb Plate

ACCESSORIES EXTRAS

The Rhino SafeClamp® incorporates strength, speed and style to provide a revolutionary ladder clamping system.

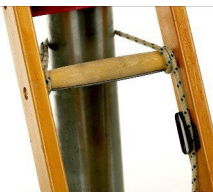
Use of a composite beam structure and stainless steel anchor hook offers high strength, whilst providing excellent corrosion resistance. The innovative one touch clamping method ensures that the operation is five times quicker than traditional screw down ladder clamps. Security is taken care of using the integral lock that sees an end to the days of rattling and easily lost padlocks.



Ladder Tag

for inspection & identification

Clamcleat and security rope.



DIY Ridge Hook

Conversion accessory

BESPOKE LADDER SYSTEMS

Still cannot find what you need then give the office a call we may be to help with either a standard product or something built specifically for you.





A. Bratt & Son Limited

Abbeyfield Road, Lenton Ind Est,
Nottingham. NG7 2SZ

☎ (+44) 0115 9866851

📠 (+44) 0115 9861991

📧 sales@brattsladders.com

