

# Ciclo de 3M>>>

sentido horário  
MENOR HARMÔNICO

sem armadura de clave

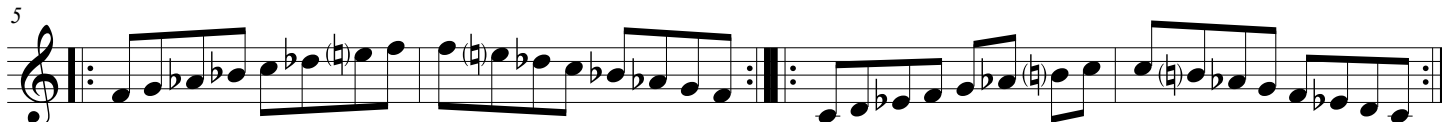
Am7M(9)(11)(b13)

C#m7M(9)(11)(b13)



Fm7M(9)(11)(b13)

Cm7M(9)(11)(b13)



Em7M(9)(11)(b13)

Abm7M(9)(11)(b13)



Ebm7M(9)(11)(b13)

Gm7M(9)(11)(b13)



Bm7M(9)(11)(b13)

F#m7M(9)(11)(b13)



Bbm7M(9)(11)(b13)

Dm7M(9)(11)(b13)



# <<<<Ciclo de 6m

sentido anti-horário