

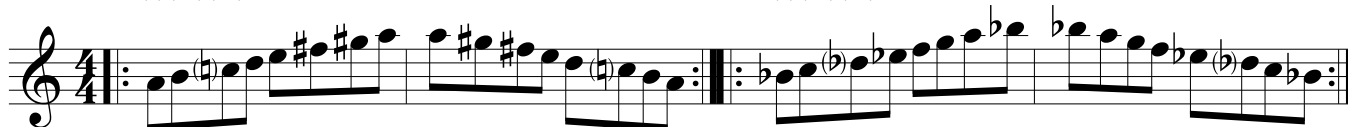
Ciclo cromático>>>

sentido horário
MENOR MELÓDICA

sem armadura de clave
(maior com a 3a menor)

Am7M(9)(11)(13)

Bbm7M(9)(11)(13)



Bm7M(9)(11)(13)

Cm7M(9)(11)(13)



Dbm7M(9)(11)(13)

Dm7M(9)(11)(13)



Ebm7M(9)(11)(13)

Em7M(9)(11)(13)



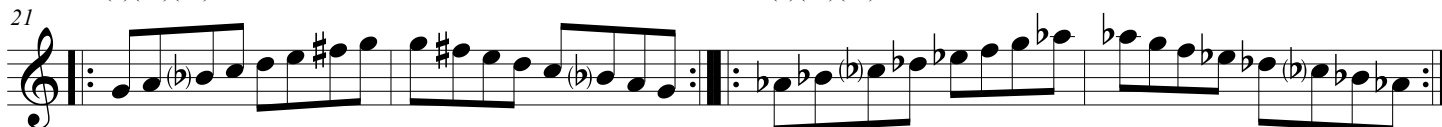
Fm7M(9)(11)(13)

F#m7M(9)(11)(13)



Gm7M(9)(11)(13)

Abm7M(9)(11)(13)



<<<<Ciclo de 7M

sentido anti-horário