

S E R I E S

1400

FOAM DOCK SEAL  
With Head Curtain

The Series 1400 Dock Seal saves energy dollars while providing airtight protection to the loading dock area during material handling operations. The Series 1400 effectively services varying height vehicles at a wide range of door heights.

The vehicle positioned at the dock compresses the resilient foam side pads, while the full width head curtain conforms to the truck, eliminating the gap between the facility and the vehicle body. This separation of interior and exterior environments allows for a safe loading dock area while ensuring employee comfort and efficiency.

The structurally supported head curtain is sloped to ensure adequate drainage while being held taut by tension straps at each end.

The airtight barrier that Fairborn dock seals provide regulates the facility's atmosphere to be free from air-borne contaminants, insects, and foul weather; while enhancing building security.

To ensure maximum durability, the Series 1400 is available in our superior performance materials. Fairborn created the first certified performance fabrics designed solely for the construction of dock seals and shelters. Our exclusive materials meet or exceed the most demanding requirements and have proven to out-perform any fabric in today's dock shelter market.

*Fairborn*<sup>®</sup>

FAIRBORN USA INC.



## FOAM DOCK SEAL

# SERIES 1400

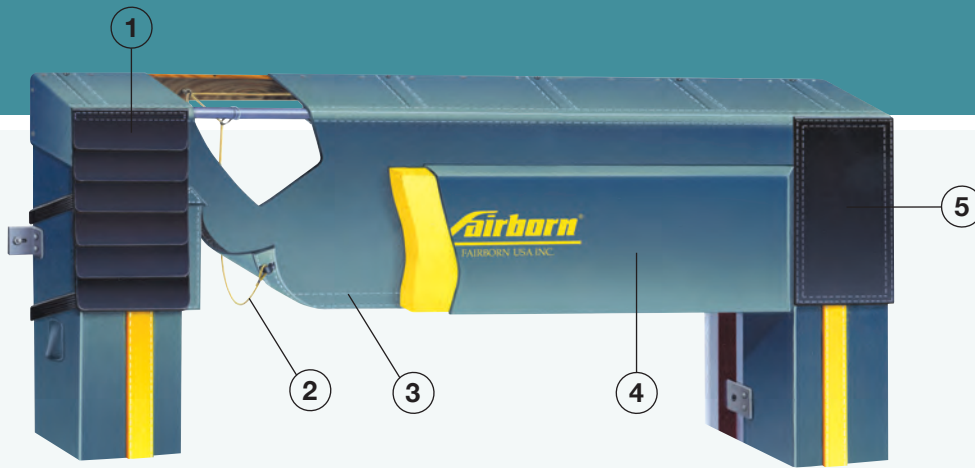
*“Fairborn is dedicated to producing the highest quality product in appearance and structural integrity.”*

*The pride in workmanship of our experienced personnel, combined with the utilization of the finest grade raw materials, assures products of the highest caliber.”*



**Quality features and components that ensure our customers the best product value...**

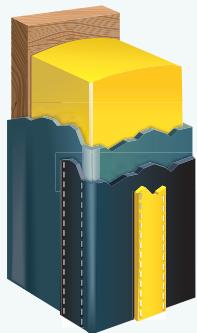
- 1 Cover Fabric**  
Fairborn offers fabrics in a wide range of colors and performance levels. A valued consideration is Dynalon, one of our superior performance materials. Dynalon's extraordinary life expectancy is attributed in part to its excellent tear and abrasion resistance properties.
- 2 Foam**  
Fairborn developed a polyurethane foam to properly compress, while conforming to the irregularities of the vehicle body. Superior recovery characteristics ensure the foam's return to its original shape and size.
- 3 Wood Frame**  
The Series 1400 frame is select dimensional lumber of the highest grade, pressure treated and kiln dried before and after treating. (A formed steel frame is optional.)
- 4 Chemical Weld**  
The foam is chemically bonded to the entire contact area of the frame to ensure maximum structural integrity.
- 5 Air Exhaust**  
Each pad is equipped with properly sized outlets to allow for free air escape during compression while prohibiting moisture infiltration.
- 6 Guide Stripe**  
Each side pad includes highly visible yellow stripes to facilitate accurate truck positioning. Fairborn developed a superior "Urethane Finish" to ensure greater stripe durability while maintaining a clean appearance.
- 7 Tension Straps**  
The head curtain is held taut by elastic straps at each end to ensure it will conform to the top of the vehicle body.
- 8 Support Stays**  
Scotchply™\* stays, supported at each end, maintain a proper head curtain slope to provide for adequate drainage, while guaranteeing the curtain a neat appearance.
- 9 Cross Member**  
The head curtain is supported by a structural rigid tubing held in place by a continuous fabric sleeve incorporated into the top, front edge of the curtain.
- 10 Thread**  
All stitching is performed by professional seamstresses utilizing bonded, high tensile, multi-cord polyester thread. The sewn construction provides for lockstitch, proper tension, and backtack sewing techniques throughout.



### Head Curtain Options...

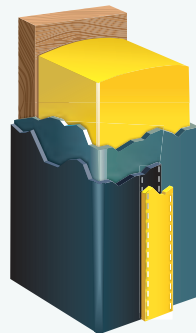
- 1 **Dyna-Armor Pleats**  
located at each end of the head curtain provide maximum protection from abuse caused by protruding corners at the top of the vehicle.
- 2 **Splits with Pull Ropes**  
enable the head curtain to be adjusted to effectively service varying height vehicles at the same opening. Hook and loop fasteners hold the vehicle splits together at each position of adjustment.
- 3 **A Weighted Member**  
sewn into the edge of the head curtain enhances the curtain's ability to conform to the vehicle body.
- 4 **A Foam Face**  
incorporated into the head curtain's construction allows the unit to mold to the vehicle's irregularities.
- 5 **Face Reinforcements**  
sewn in place at each end of the head curtain, further reinforce this critical wear area.

### Optional Side Pad Fabric Construction...



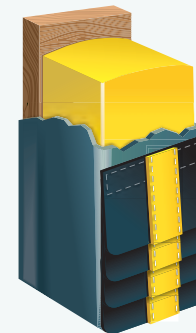
**Reinforced Face**

This option further reinforces the entire contact surface of the side pad for greater durability.



**Reinforced Inside**

Reinforcing the portion of the side pad that is exposed to the door opening, reduces the potential for damage caused by contact from a wide load.

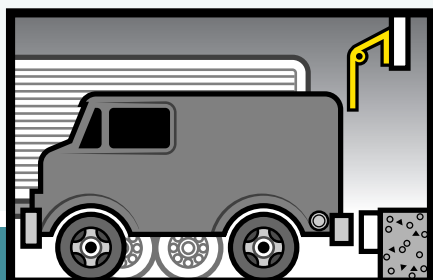


**Dyna-Armor Pleats**

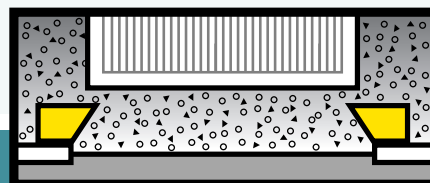
A pleat construction the full length of the side pad provides for maximum protection. This option is available in 4", 8" or 16" exposure.

### A few of the many Series 1400 design options to tailor suit your requirements...

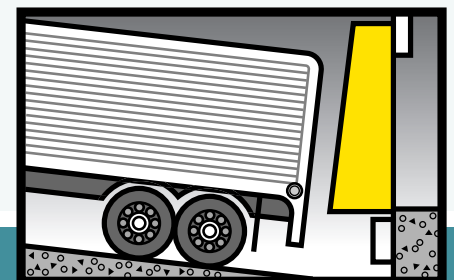
The **Curtain Length Availability** allows for the accommodation of the widest range of vehicle and door height variations.



**Beveled Side Pads** allow standard vehicle widths to be serviced at wider openings. The bevel profile provides for a "wiper" action, allowing for greater accessibility to the rear of the vehicle, while reducing pressure onto the facility wall.



**Tapered Units** provide a uniform seal when accommodating an inclined or declined drive approach. This option reduces the potential of overcompression.



*During the last two decades, Fairborn has earned an unmatched reputation for excellence.*

---

### **Highest Quality**

Fairborn is dedicated to the efficient production of the highest caliber products. This commitment provides for product life expectancy far beyond any competitive model and ensures our customers maximum value. Years of design, research and development have provided Fairborn with the most complete and reliable line of products.

### **Leader In Innovation**

Fairborn created the first certified, superior performance fabric designed solely for the construction of dock seals and shelters. Our field proven Dynalon has been widely accepted by industry, and continues to lead with many specifying agencies and quality minded customers throughout the world.

### **Finest Service**

Fairborn's commitment to service is supported by a qualified nationwide representative network, and our experienced sales, engineering and management staff. This expertise ensures our success in providing Fairborn customers the best tailor fit product for their specific needs.

Please contact your local Fairborn representative to enable us to design a unit that will enhance the aesthetic value of your facility, while saving you costly energy dollars. If you have any comments, suggestions or questions regarding our many products or services, we'd like to hear from you.

**Distributed By:**



**FAIRBORN USA INC.**

P.O. Box 151 • 205 Broadview Street  
Upper Sandusky, Ohio 43351

800-262-1188 or 419-294-4987  
Fax 419-294-4980