

Advanced I (tap/jazz) and Ballet III Costume Description Sheet

Advanced I - Ms. Sam – Wednesdays 5:30-7:15 - Studio A
Costume Contact Mom: Nella Crusan (337) 356-3769

“RABi” - Lyrical

Costume: White Lace Top, Purple Pants
Tights: Tan Stir-Up Tights
Shoes: Half Pirouette Shoes
Hair: Middle Part Low Bun
Accessories: You will not wear the gold chain that comes with the costume.



“I’m Outta Love” - Jazz

Costume: Two Piece Gold Top and Pants
Tights: Tan Stir-Up Tights
Shoes: Half Pirouette Shoes
Hair: Middle Part Low Bun
Accessories: Make sure to wear a no show, tan bra.

Advanced I (tap/jazz) and Ballet III

Costume Description Sheet

Advanced I - Ms. Sam – Wednesdays 5:30-7:15 - Studio A
Costume Contact Mom: Nella Crusan (337) 356-3769

"Pieces of My Heart" - Tap

Costume: Flowered Long Sleeve Top with a Black Sports Bra under (Need to purchase on your own), Tan Camel Flare Pants

Tights: Tan Stir-Up Tights

Shoes: Black Tap Shoes

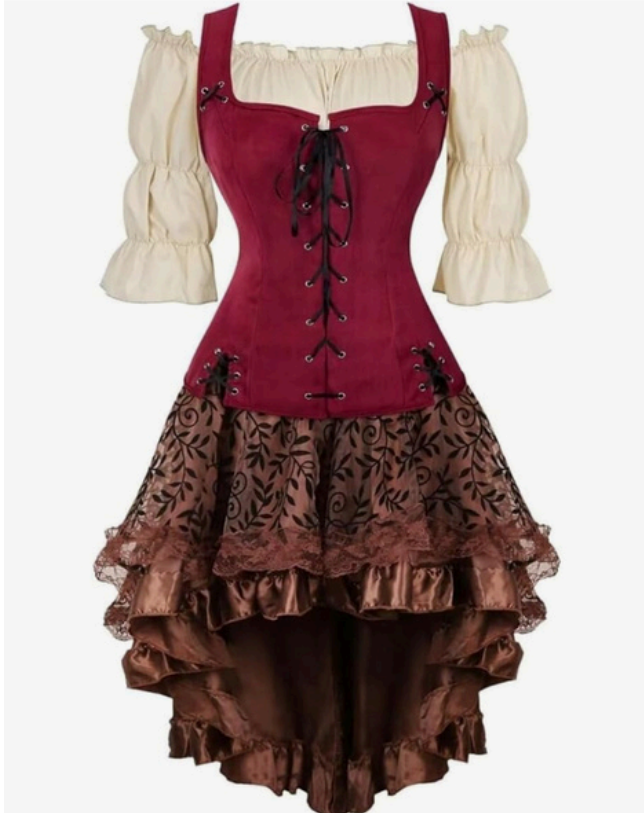
Hair: Middle Part Low Bun

Accessories: NA



Advanced I (tap/jazz) and Ballet III Costume Description Sheet

Ballet III - Ms. Kalli Rose – Mondays –6:00-7:00 – Studio A
Costume Contact: **COMING SOON**



“Hoist the Colors” – Ballet

Costume: Cream Undershirt (tucked into skirt), Red Corset Top, Brown Skirt, Black Hot Shorts (under skirt)

Tights: Suntan Tights, Black Fishnets

Shoes: Ballet Shoes w/ Boot Spats over top

Hair: TBD

Accessories: TBD

GENERAL COSTUME NOTES:

- Please label ALL pieces of your child's costume. Including tights and shoes!
- NO underwear. NO jewelry. NO nail polish.
- Hairnets must be used for those who will wear a bun for the revue. A bun hairstyle requires multiple bobby pins and hair gel/spray to maintain a tidy bun. For girls with shorter hair a 'donut' may be used to create a bun. Please watch this video for ways to make a good bun. http://www.youtube.com/watch?v=882m4QKu0sg&feature=em-share_video_user
- Makeup should be applied heavily due to lighting. Browns, plums, and pinks look best from stage.
- Please make sure that bows on ballet shoes are tucked in and that there are NO bows on your child's tap shoes (jazz tap shoestrings acceptable). If they are patent leather-they must be changed to black elastic.
- You may contact this class's costume contact mom (at the top of this page) with any questions you have regarding your child's costume.

Class Picture Time: Saturday, March 29th - 2:00 pm

Please arrive at least 10 minutes prior to the scheduled time. Arrive in regular DANCE ATTIRE to take the class picture. Hair for all pictures can be styled differently than how it will be worn on Revue day. Individual costume pictures will be taken after the class picture, the small room will be available for you to change your child into her costumes. Boys can use the restrooms to change into their costumes.