

**SHALLOW OIL PUD OBJECTIVES
(UNDER 4000 FEET !)**



**HOUSTON OPEN E-1
HARRIS COUNTY TEXAS**

MIOCENE 3460 SAND PRIMARY OBJECTIVE

**NOTE: MIOCENE 3440 (SECONDARY OBJECTIVE)
MIRRORS THE STRUCTURE OF THE MIOCENE
3460 AND IS A “DEVELOPMENT OBJECTIVE”**

AB MARSHALL #8D
INDEX #15 (1965)

MECHANICAL FAILURES
PRODUCED 49,664 BW+ 4877 BO

MIOCENE 3460 SAND

WATER CONTACT

RGS

3400

0080

F.R. 3518

Oct 1966

RR PERMEABILITY

3470

3274

3272

3480

Which curve does
the Gamma Ray
log usually
correspond with
-|---|+
Gm electric log

SHORT NORMAL
0.16" x 16" x 16"

18" x 18" LATERAL
A-18" x 18" x 18" x 18"

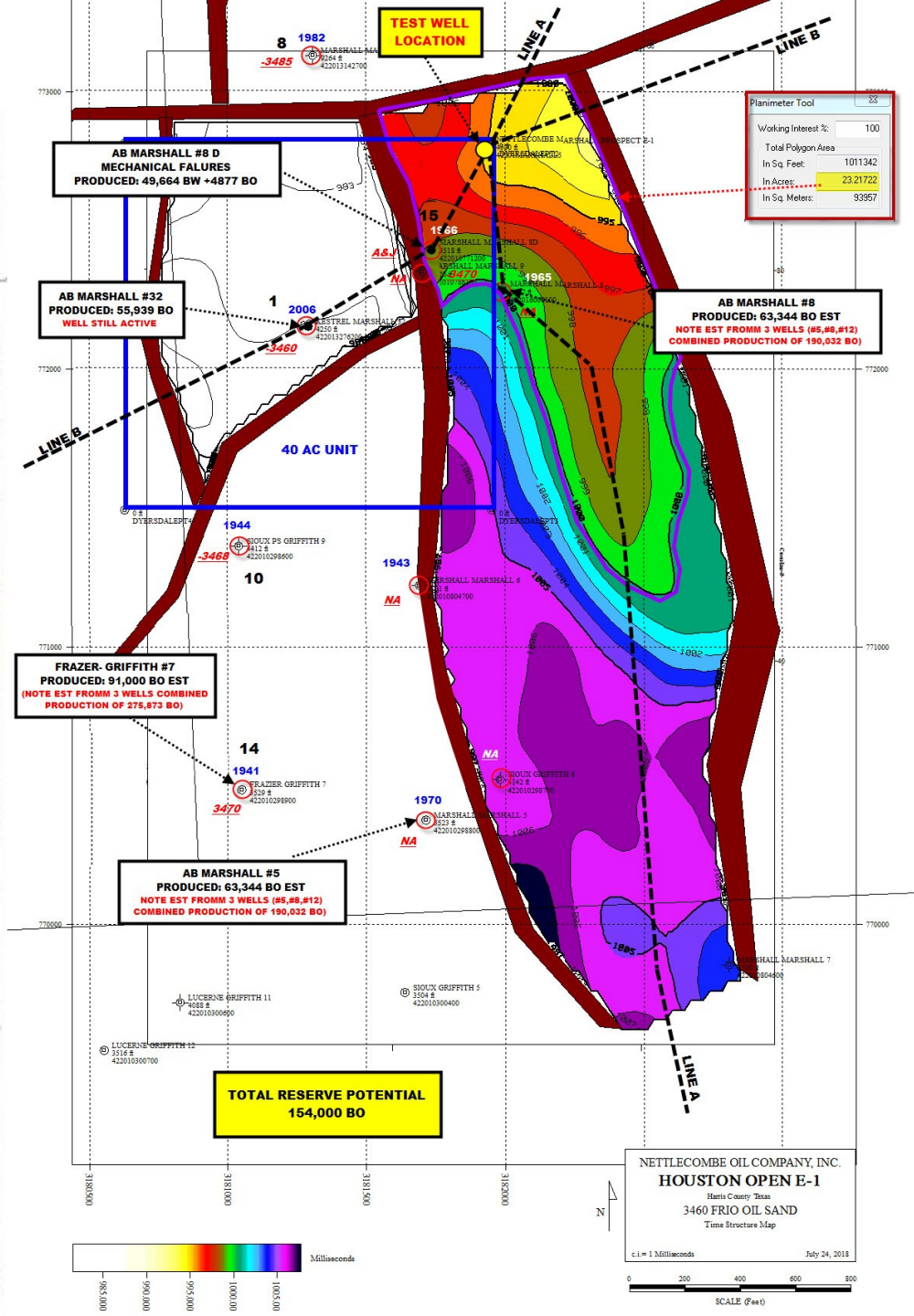
LONG NORMAL
A-48" x 48" x 48"

AMP SHORT NORMAL

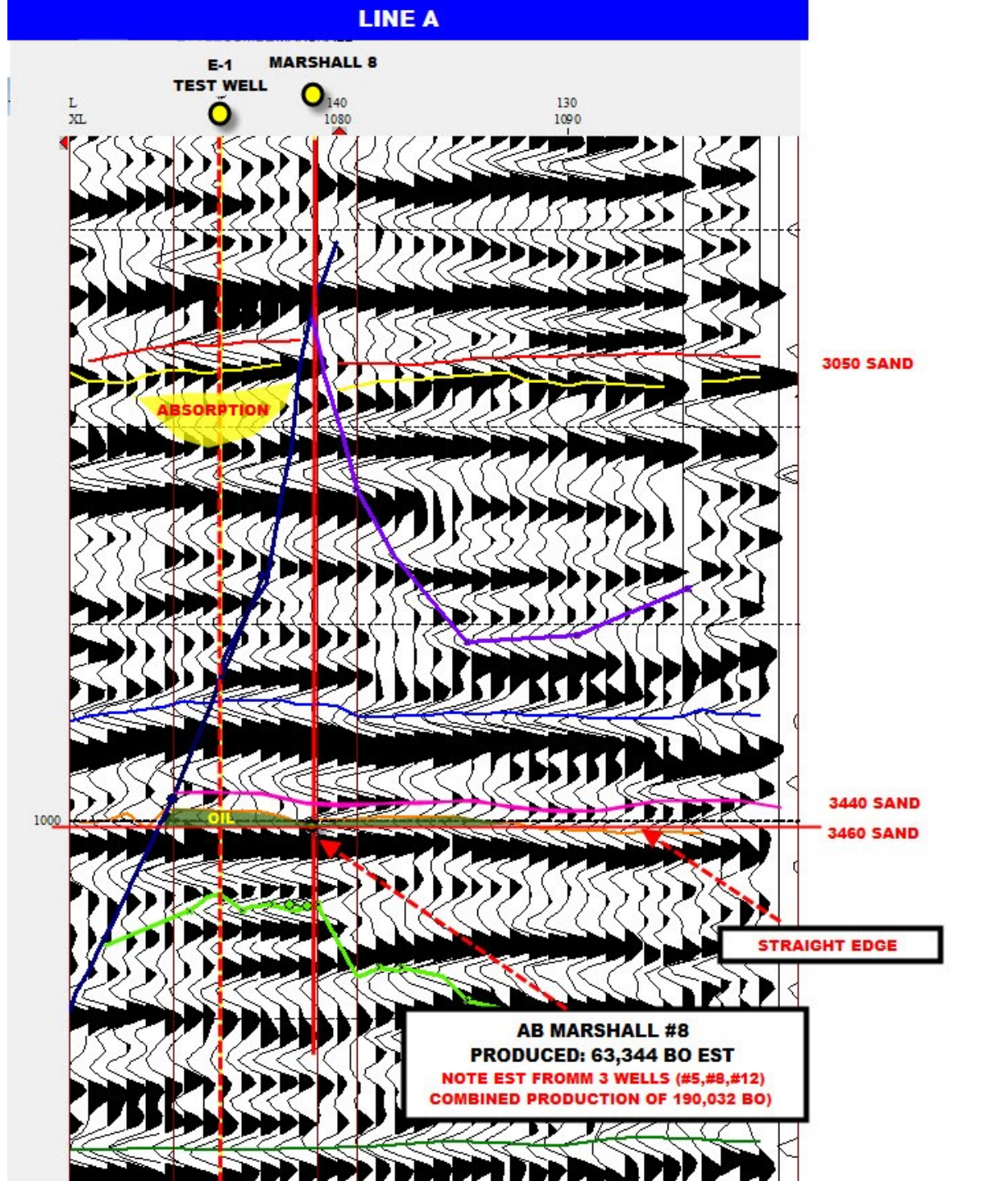
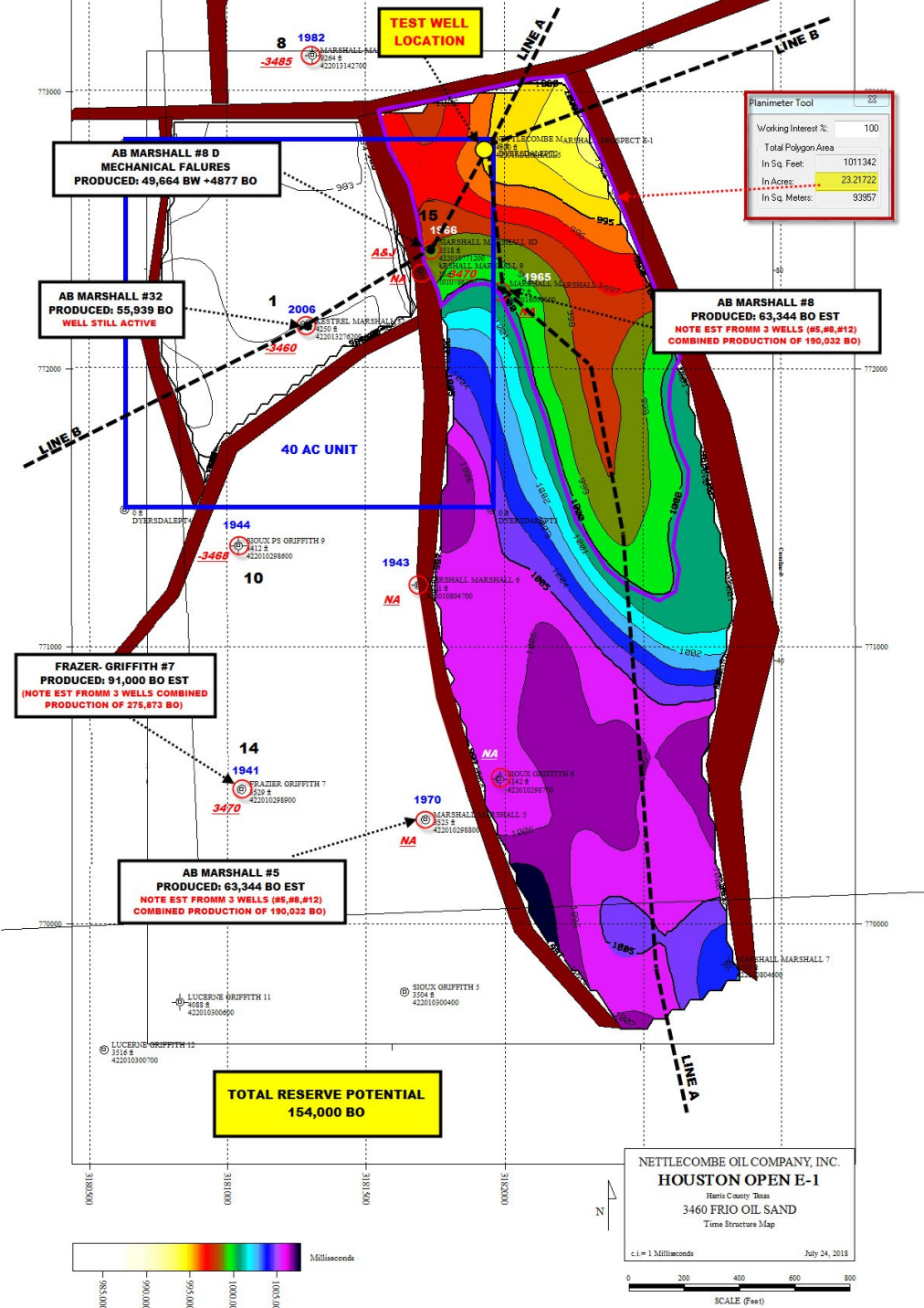
SPONTANEOUS POTENTIAL

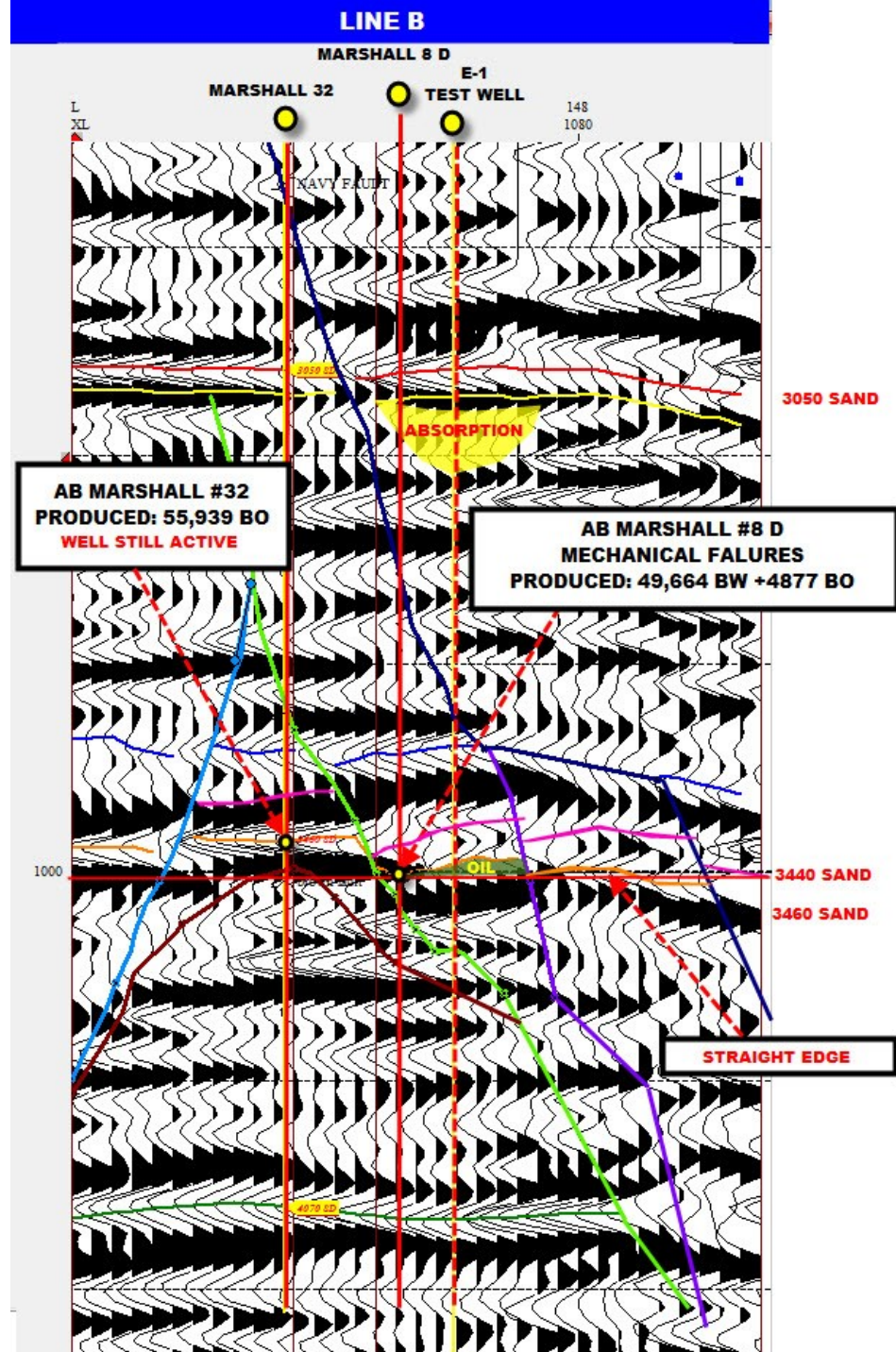
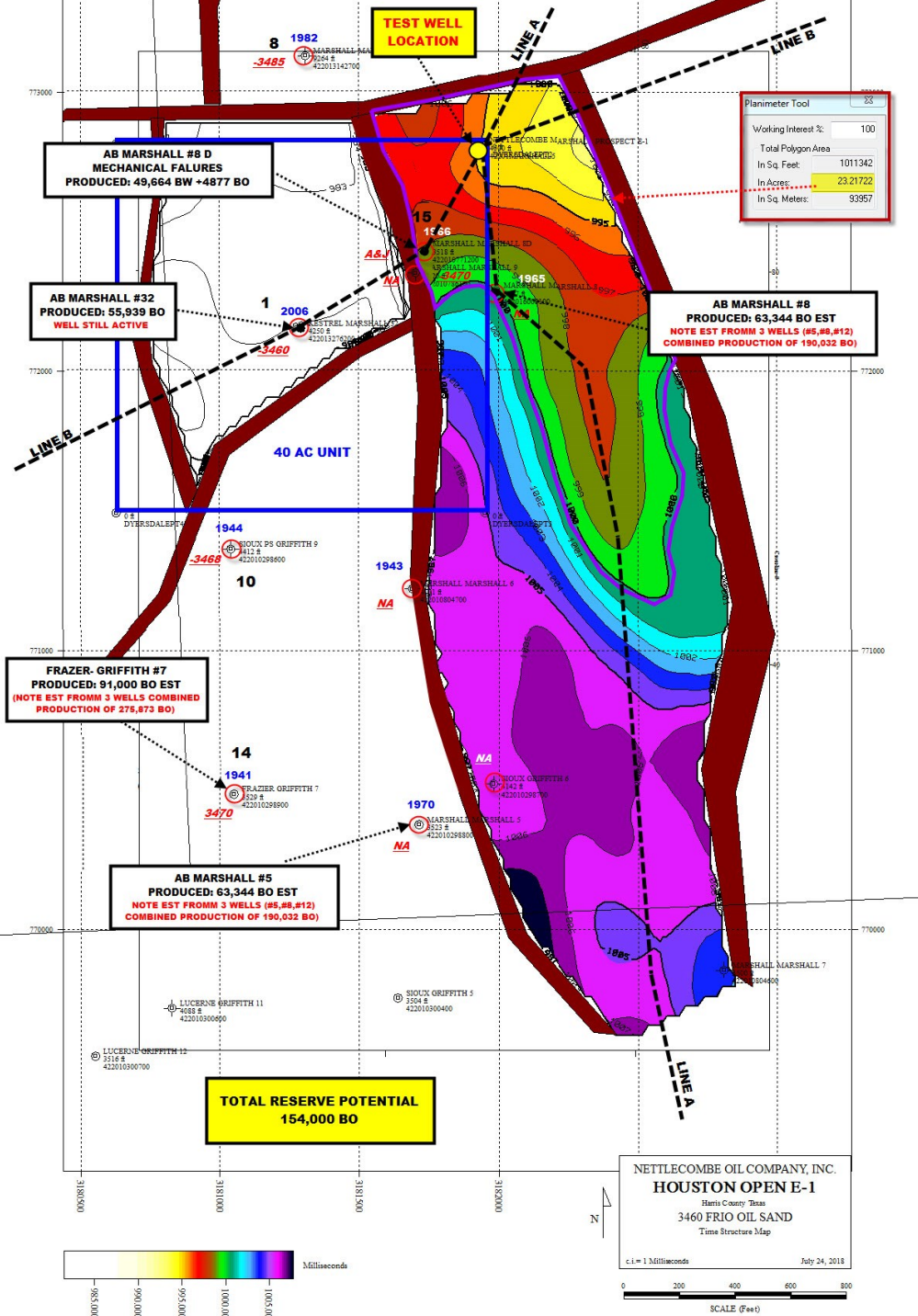
RESISTIVITY

RESISTIVITY



SEISMIC PRESENTATION





NET SAND MAP
3460 SAND

KEY 1 INCH LOGS

FRAZIER-GRIFFITH #7

INDEX # 14 (1941)

MIOCENE 3050 SAND

3000
3100
3200
3300
3400
3500

FRAZIER-GRIFFITH #7
PRODUCED: 91,000 BO EST
(NOTE EST FROM 3 WELLS COMBINED
PRODUCTION OF 275,873 BO)

MIOCENE 3440 SAND

MIOCENE 3460 SAND

WATER CONTACT

3528' = 1st. Rdng. & T.D.

FRAZIER GRIFFITH #10

INDEX # 12 (1944)

MIOCENE 3050 SAND

MIOCENE 3440 SAND

MIOCENE 3460 SAND

FRAZIER GRIFFITH #4 WAS
DRILLED IN 1944 AND TESTED IN
THE 3460 SAND 1200 MCF/ DAY
NOT ECONOMIC FOR THE WAR
EFFORT

AB MARSHALL #32

INDEX #1 (2006)

MIOCENE 3050 SAND

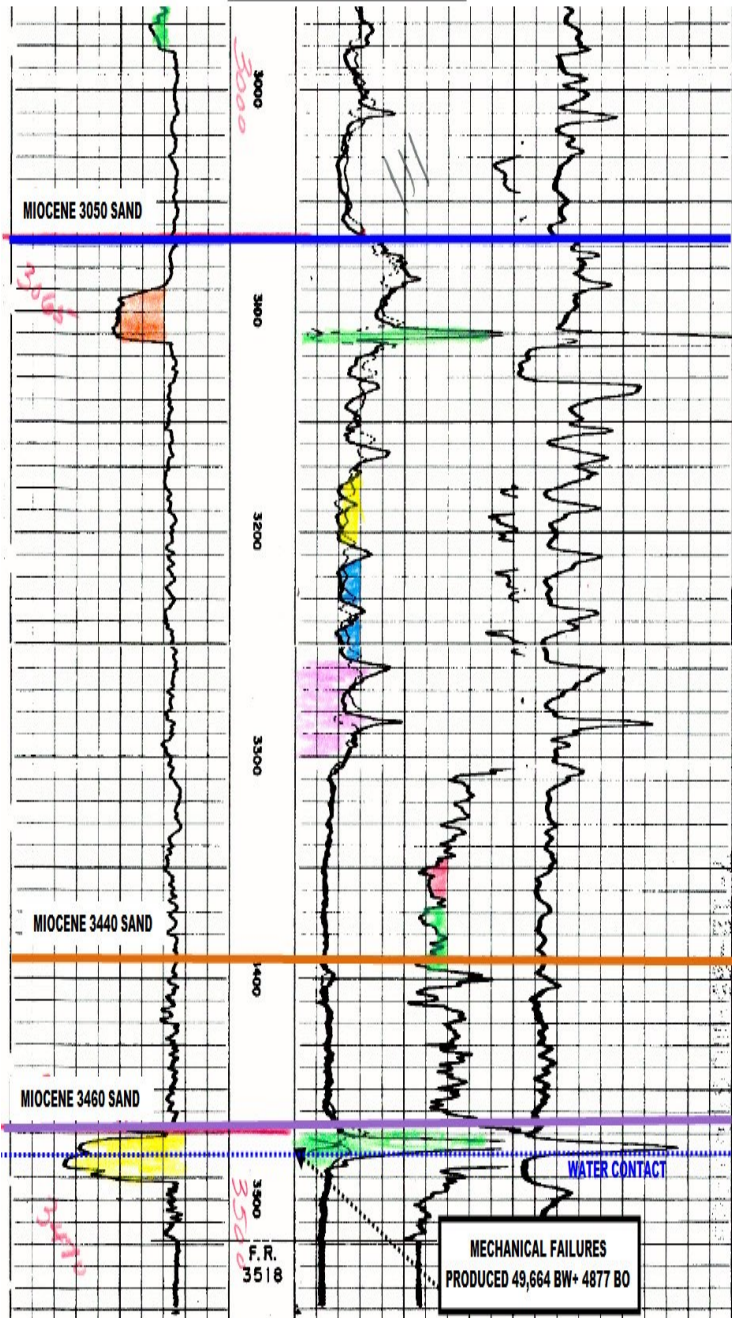
MIOCENE 3440 SAND

MIOCENE 3460 SAND

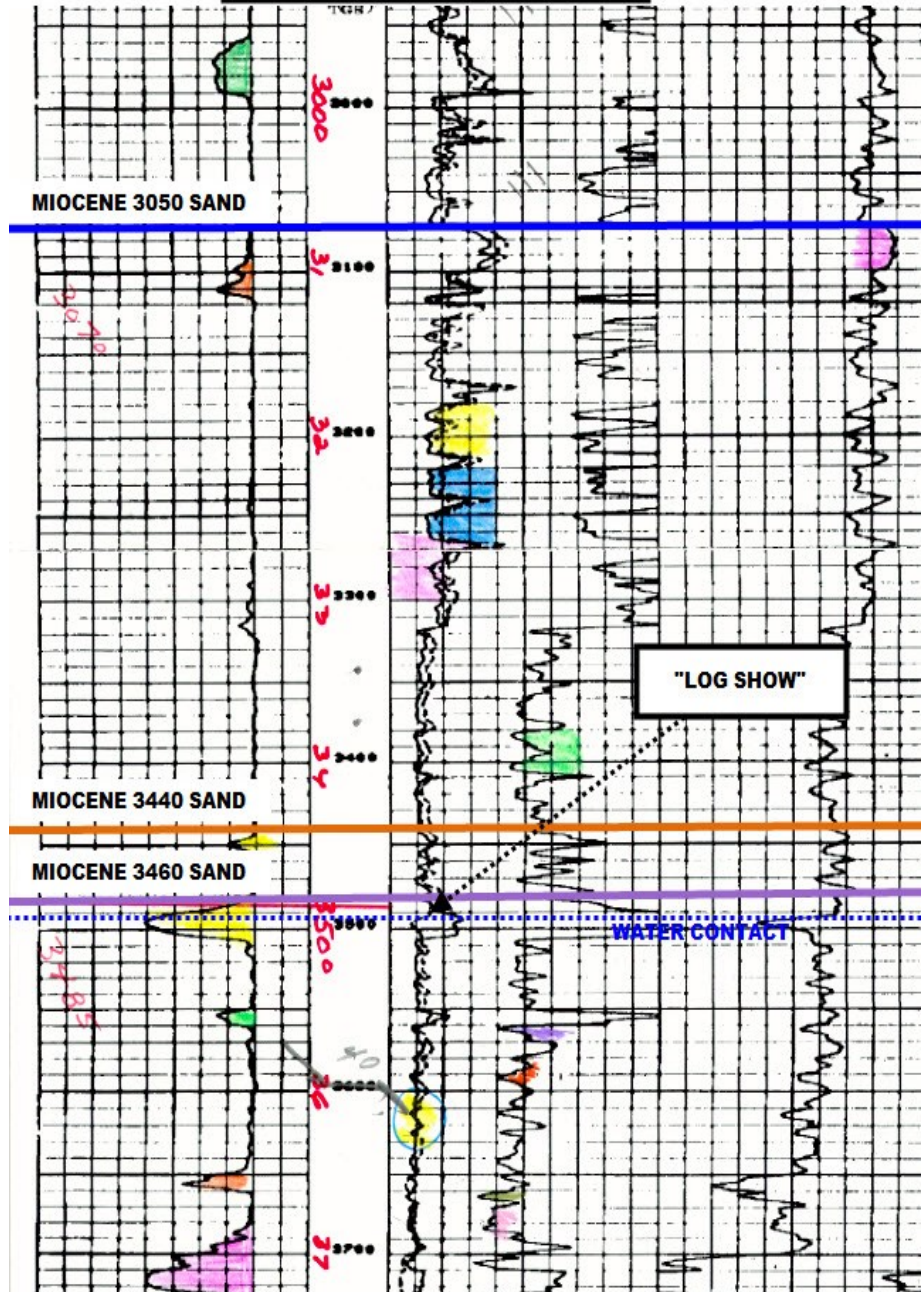
AB MARSHALL #32
PRODUCED: 55,939 BO

2900
3000
3100
3200
3300
3400
3500
3600

AB MARSHALL #8D
INDEX #15 (1965)

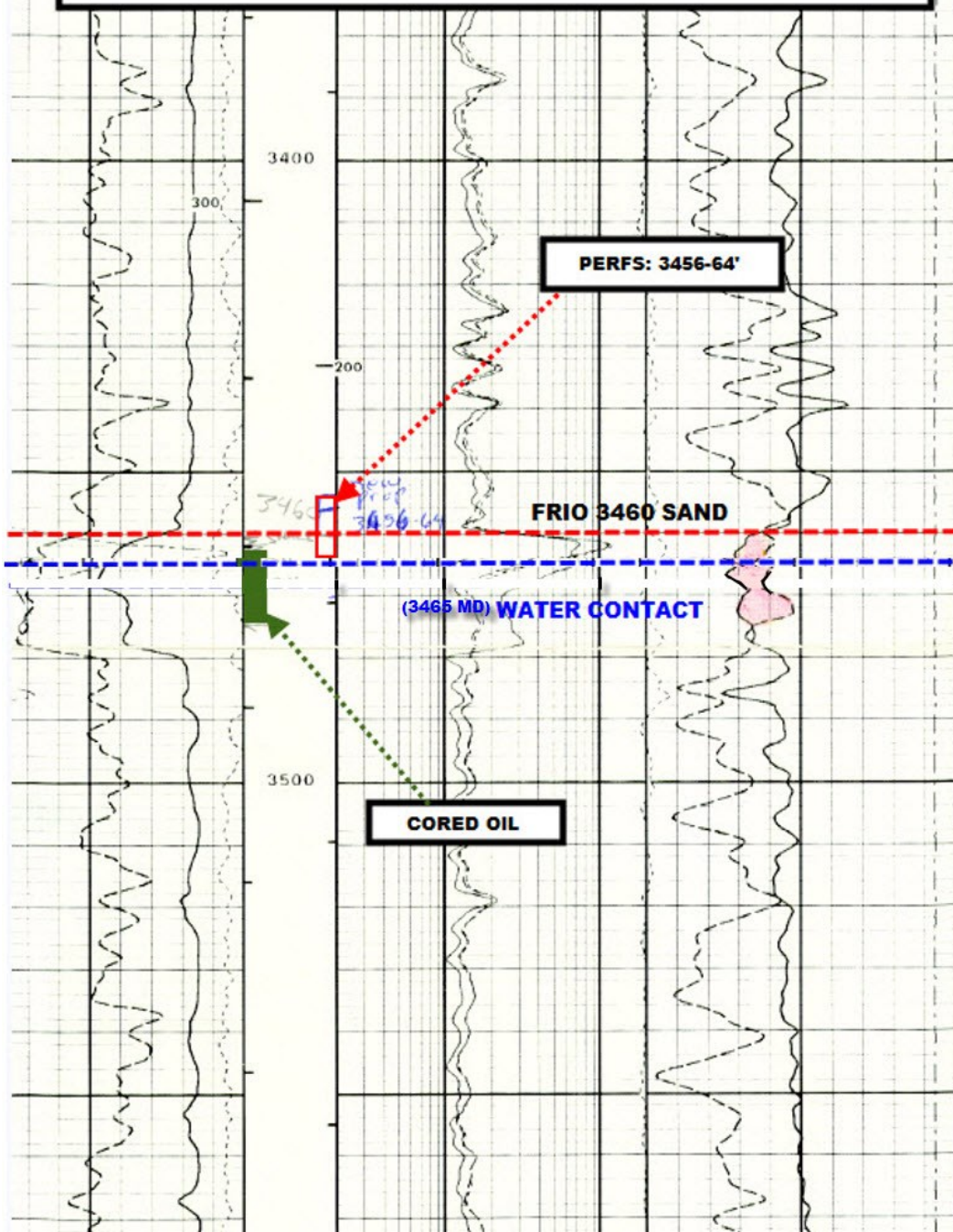


AB MARSHALL #23
INDEX #8 (1982)

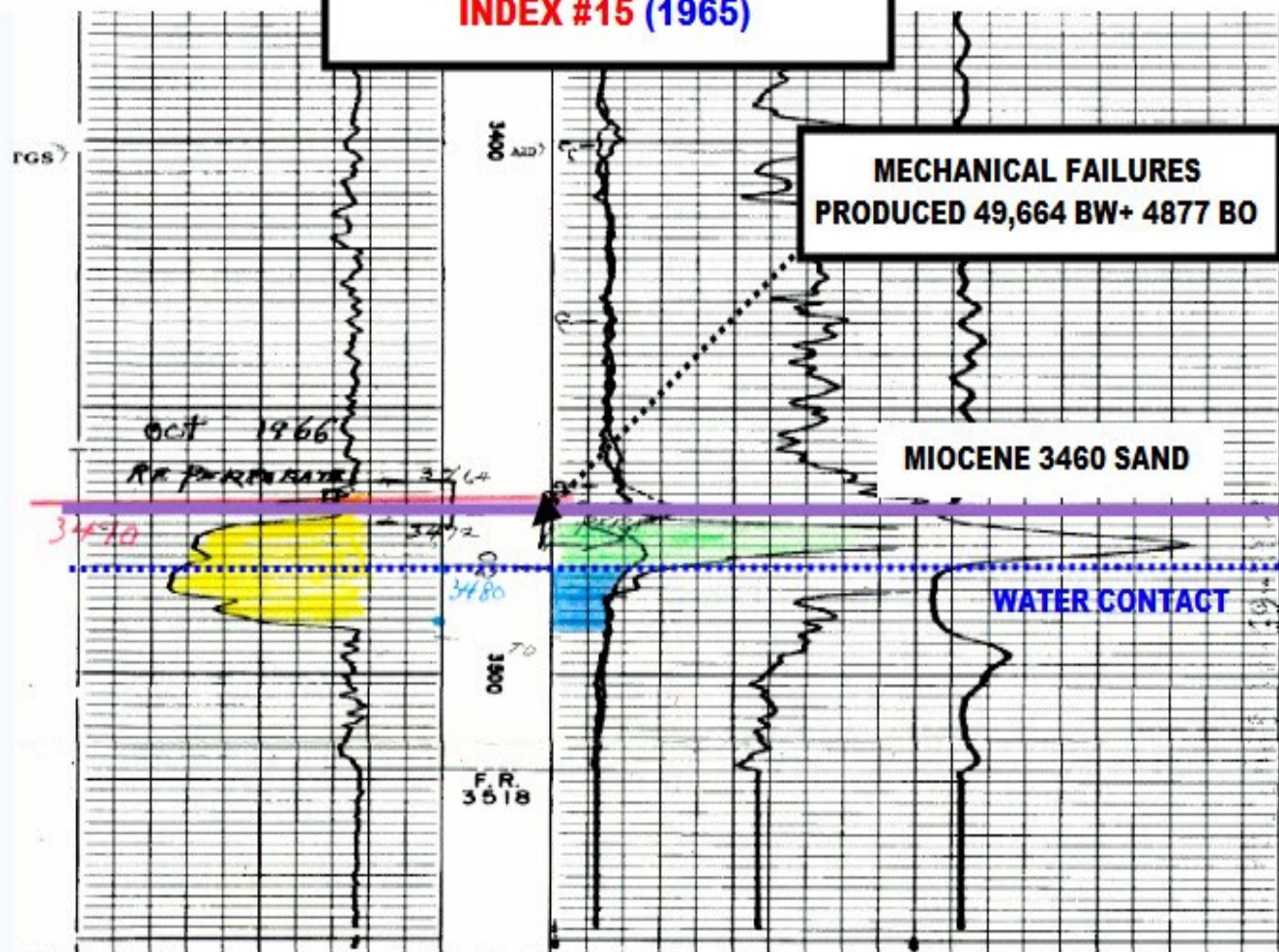


KEY 5 INCH LOGS

**TRIO ENERGY GROUP
AB MARSHALL #32**



**AB MARSHALL #8D
INDEX #15 (1965)**



*Which curve does
the Gamma Ray
log usually
correspond with
on electric log*

SHORT NORMAL A-10'-117" M-10' M	18" 8" LATERAL A-10'-117" M-10' M
0	1.0
1.0	0
1.0	1.0
0	1.0
0	1.0
AMP SHORT NORMAL	

SPONTANEOUS POTENTIAL millivolts	DEPTH	RESISTIVITY ohms. m ² /m	RESISTIVITY ohms. m ² /m
-------------------------------------	-------	--	--

Project Summary

- This project is on an established, Proven Un-Developed field (Reserve Potential 233,000 BOE)
- All Facilities are already onsite. See Map on second slide.
- Very low Cost and Very Low Risk project.
- Risked 162,000 BOE above 3,500 Ft.
- 2 target formations Totaling: 3440 ft - 40,000 BOE
3460 ft - 193,000 BOE