

MARCH 3, 2020
VOTE ON TUESDAY
YOUR VOICE **YOUR VOTE**

Shots Fired
GUNSHOTS FIRED ON WAKE AVENUE
TUESDAY AFTERNOON, POLICE SWARM
AREA, STILL INVESTIGATING **3**

WEEKEND WEATHER
MILD Cloudy but warm weekend ahead
HIGHS: 63-68
0 10 20 30 40 50 60 70 80 90 100 110
LOWS: 46-51
FRIDAY SATURDAY SUNDAY

San Leandro Times

AN INDEPENDENT HOMETOWN NEWSPAPER SERVING SAN LEANDRO, ASHLAND, SAN LORENZO AND SHEFFIELD VILLAGE

VOL. 30 • NO. 9

THURSDAY, FEBRUARY 27, 2020

SAN LEANDRO • CALIFORNIA



PHOTO BY JIM KNOWLES

Dr. Kimberly Noble (right), director of elementary education at the San Lorenzo school district, compliments the fifth graders on the talk they gave to the school board about keeping lead out of the water.

Students Call for Lead-Free Water

By Jim Knowles
San Leandro Times

Three fifth graders stepped up to the microphone at the San Lorenzo school board meeting earlier this month to talk about lead. The school district has fixed and replaced drinking fountains and water dispensers at the schools, they acknowledged.

But more should be done.

Tests released last summer showed that two of the district's schools, Arroyo High and Corvallis School, had lead in the water that exceeded the 15 parts per billion (ppb) limit that's deemed unhealthy by federal law. Those fixtures were shut down for repairs and now all the water fixtures in the

school district are under 5 ppb.

But the fifth graders, and public interest groups, say it should be not over 1 ppb.

"It's down to 5 parts per billion, but you can do more," said fifth grader Santiago Garcia Mora, who spoke along with students Yesenia Delgado and Matilda Chanhung.

see LEAD, page 8

People Express Ideas on Climate Action Plan

San Leandrans propose local action to deal with climate change

By Mike McGuire
San Leandro Times

San Leandrans got their chance to help the city fight climate change at a public meeting last Thursday night at the Senior Community Center, attended by some 100 people.

Considerable progress has been made since the city first adopted a Climate Action Plan (CAP) in 2009, said city Sustainability Manager Dr. Hoi-Fei Mok. More remains to be done on the local level even as it is also dealt with at the state, national and international levels, she said.

The meeting was part of an update that the City Council hopes to adopt by the end of this year on greenhouse gas reductions and reducing San Leandro's vulnerability to climate change.

People divided into small groups to suggest how to address climate problems at the local level.

A big set of suggestions from the public centered around reducing the role of the automobile in getting around the city. One group suggested bringing back school buses rather than individually driving each child to and from school. They said this would reduce traffic congestion as well as air pollution.

Others focused on difficulties in getting around town by any means other than the automobile. It is physically difficult to walk to any destination, said one group,

because many sidewalks are in poor repair. They also suggested better lighting at night, so one can see those uneven sidewalks better

see CLIMATE, page 8

Goolsby Challenges Miley for Supervisor

By Mike McGuire
San Leandro Times

Nate Miley, running for re-election for a sixth term as Alameda County Supervisor for District 4, says he has the experience, energy and know-how to continue serving the residents of parts of Oakland and unincorporated Alameda County communities such as Ashland, Cherryland and San Lorenzo.

Miley is opposed by Esther Goolsby, a community organizer for Communities for a Better Environment, in the March 3 primary election. As long as one candidate gets a majority of votes, they will be elected then and will not appear on the November

see SUPERVISOR, page 8

AIDS Quilt Makes a Stop in San Leandro

By Mike McGuire
San Leandro Times

The AIDS Memorial Quilt, described as the world's greatest social justice teaching tool and once nominated for the Nobel Peace Prize, is living in San Leandro temporarily on its way to a new permanent home in San Francisco's Golden Gate Park. Trucks bearing the nearly 50,000 panels of the quilt arrived at a San Leandro warehouse near Oakland Airport last week, and were greeted with speakers and a display of the quilt's history.

Quilt panels will go on display in the Robin Williams Meadows in Golden Gate Park from April 3 to 5, as part of the park's

150th anniversary celebrations.

The quilt was the 1985 brainchild of San Francisco community activist Cleve Jones, a political associate and friend of assassinated San Francisco Supervisor and gay activist Harvey Milk. Jones said last week in San Leandro that the anniversary of Milk's death had coincided with the 1,000th death due to AIDS, and he sought a way to remember the people who were sometimes even being denied funerals at the time.

Sewing of the quilt began in San Francisco in 1987, according to a statement by the National AIDS Memorial. In its first major display, it filled the National

see QUILT, page 16



PHOTO BY MIKE MCGUIRE

Longtime community activist Cleve Jones speaks in front of stored panels at the AIDS Quilt event, with (at left) San Francisco Supervisor Rafael Mandelman and San Francisco recreation and parks chief Phil Ginzberg.

INSIDE YOUR TIMES

SPORTS Two St. Leander teams take home titles. Page 2	Auto 6 Calendar 4 Classified Ads 12 Crime 3 Crossword 13 Health & Fitness 9 Homes 10 Home Services 12 Inquiring Reporter ... 15 Letters 15 Lifestyle 7 Obituaries 14
AUTOS Lexus hybrid has a new style but it's not full electric. Page 6	
FOOD You have to try that rhubarb pie. Page 7	

38,500 EVERY THURSDAY
THE LARGEST FREE-DELIVERED NEWSPAPER IN THE EAST BAY

San Leandro Times

An independent hometown newspaper
serving San Leandro, Ashland,
San Lorenzo and Sheffield Village

EDITORIAL

Fred Zehnder
Editor and Publisher

Jim Knowles
Managing Editor
jimk@ebpublishing.com

Mike McGuire
City Editor

Steve Schaefer
Auto Editor

PRODUCTION

Howard Morrison
Manager

Kayla Steinorth
Art Director

Moxie Morrison
Assistant

OPERATIONS

Claudette Morrison
Business Manager

ADVERTISING

Display Advertising

Claudette Morrison

Classified Advertising

Patrick Vadnais

HOW TO REACH US

San Leandro Times
2060 Washington Ave.
San Leandro, California 94577

Office hours: Weekdays, 9 a.m. to 5 p.m.

Main Office: (510) 614-1555

www.ebpublishing.com

©2018 East Bay Publishing Corporation



St. Leander Teams Take Home Championships

Two St. Leander School CYO teams had a successful weekend. The fifth-grade boys' basketball team won the Southern Alameda County (SAC) League championship game. The win continues their undefeated

streak in the SAC for two years. And another St. Leander team became champions as well. The sixth-grade girls' volleyball team won the Metro League Championship.



Final Weekend to See *Steel Magnolias*

Steel Magnolias plays its final weekend at the Chanticleers Theatre, 3683 Quail Ave. in Castro Valley.

The show plays on Friday and Saturday at 8 p.m., and Sunday at 2 p.m.

Tickets are \$22 to \$27 and may be purchased online at chanticleers.org or by calling 510-SEE-LIVE (510-733-5483). Group discounts also available.

Steel Magnolias is a stage play by American writer Robert Harling, is a comedy-drama about the bond among a group of Southern women in northwest Louisiana. The title suggests the female

characters are as delicate as magnolias but as tough as steel. Harling based the story on his experience with his sister's death.

Chanticleers Theatre is a nonprofit community theater organization with a rich history dating back to 1948.

Today, Chanticleers Theatre is a 99-seat playhouse, serving Castro Valley and the greater East Bay. Known as "Castro Valley's Little Theatre in the Park," Chanticleers is located in the Castro Valley Community Park right across from the new Veterans' Memorial.

We Can Do It, San Leandro! VOTE YES ON MEASURE N



Four years ago, the San Leandro Unified School District conducted a comprehensive assessment of the facility needs of all public schools in the district. *Thanks to the generous support of the community, significant improvements have been made.* Measure N has been placed on the ballot to **finish the work** identified in the original assessment.

A YES VOTE ON MEASURE N WILL:

- ✓ Construct new, permanent classrooms to avoid overcrowding.
- ✓ Repair or replace deteriorating roofs, plumbing, and electrical systems.
- ✓ Replace aging classroom windows with new, energy efficient windows.
- ✓ Keep computer systems and classroom instructional technology up-to-date.
- ✓ Upgrade campus security by installing new emergency communications systems.
- ✓ Renovate student athletic fields and replace the outdated gymnasium at San Leandro High School.
- ✓ Construct new science and engineering labs and career technical classrooms at San Leandro High School.

**VOTE
YES ON
MARCH
3RD**

Paid for by San Leandrans for Great Schools—Yes on N 2020—FPPC #1386769

Learn more at www.sanleandransforgreatschools.com

POLICE & FIRE

Big Rise in Auto Break-Ins, International Rings Involved

By Mike McGuire
San Leandro Times

Auto burglaries are on the rise in San Leandro. There were 181 car break-ins in January.

In all of 2019 there were 1,750 car burglaries reported, up 54 percent compared to 2018.

Some 105 cars were stolen outright in January.

Most people in town think the goods stolen from cars are being sold locally by individuals, but that's not always the case, said San Leandro police spokesman Lt. Ted Henderson.

Theft rings are sometimes looking for specific items, and some of the items stolen here are being sold overseas, he said.

"At first we thought car break-ins were a crime of opportunity, but then we saw odd patterns of what was being stolen and where it turned up. Often overseas, at the moment Asia," Henderson said.

San Leandro police joined

with eight other agencies in November to bust up an international fencing operation allegedly being run out of a Hayward electronics store, with the Fremont police taking the lead. Phones stolen in Bay Area were being sold to countries as distant as China, Vietnam, Russia, Iran, and United Arab Emirates, according to the Fremont police.

Henderson said that recent changes in state law make it harder to effectively prosecute non-violent felonies.

"We can find over 100 stolen phones in one place, but now it's just one count of theft, not 100 counts," he said.

But police are fighting back by pooling resources against auto burglaries.

Twice a month, police from Berkeley, Emeryville, Oakland and Alameda join San Leandro officers in one of those cities to either do high-visibility enforce-

ment via traffic stops or conduct undercover surveillance of hot spots for auto burglary, Henderson said.

"We haven't caught anyone red-handed yet, but there have also been no break-ins in the cities we've targeted during those operations," Henderson said.

Police chiefs from those cities also meet monthly to compare notes on car break-ins and formulate joint strategies, he added.

Henderson suggested making it harder for thieves by leaving less in the car for them to take.

"If you're going into an establishment just for a quick visit, stop and take the extra minute to put possessions in the trunk of your car, or leave them home," he said.

So far in San Leandro, Henderson said, thieves have been breaking windows to get to items visible inside the car, usually

laptops or cellphones, and then sometimes using the trunk release to open the trunk.

He said that so far there have been no reports of San Leandro thieves using devices reported in

some other cities that let a thief search the trunk for electronics from outside the car.



Car break-ins are rising rapidly in San Leandro, with goods sometimes sold overseas.

Gunshots Fired Tuesday On Usually Quiet Wake Avenue

Gunfire erupted about 4 p.m. Tuesday afternoon in the 14500 block of Wake Avenue, following a fight there. Police responded to calls from neighbors, and detained two people, one juvenile and one adult, according to San

Leandro Police spokesman Lt. Ted Henderson.

The calls to the police mentioned multiple gunshots and an injured person in a car. When police arrived, they found two shell casings on the ground but

nobody had been hit by the gunfire, Henderson said.

Information is limited at this time but police are investigating further, Henderson said. He added that charges are expected to be filed soon.

CROSSWORD ANSWERS

A	B	S	P	I	E	S	V	E	A	L
D	U	N	E	I	R	E	I	D	L	E
S	N	O	W	B	I	R	D	S	I	T
W	E	B	S	E	N	A	T	O	R	
C	O	D	D	L	E	R	E	V		
A	I	R	E	L	F	W	I	S	P	S
S	L	O	B	M	O	W	S	N	I	T
H	Y	P	E	R	B	A	D	O	N	A
N	O	D	D	R	O	W	S	Y		
P	E	R	I	W	I	G	A	R	C	
L	A	O	S	S	N	O	W	B	A	L
O	S	L	O	C	A	R	L	P	E	A
T	E	E	N	O	W	E	S	S	E	X


PALLEN'S Come and Celebrate
MARTIAL ARTS FAMILY FITNESS

GRAND OPENING

at Our Brand New Facility

MARCH 7TH
10AM to 2PM

1660 WASHINGTON AVE
SAN LEANDRO, CA 94577
510.483.6560

FREE CLASSES ALL DAY

REGISTER ONLINE AT
PALLENMARTIALARTS.COM

STORE CLOSING - EVERYTHING ON SALE!

40% OFF everything in the store

Tools, electrical, plumbing, BBQ, Hardware, etc.

Selected items marked down 50-75%

Email inquiries regarding fixtures and bulk buys to peerlessace@gmail.com.

Peerless Ace Hardware

OPEN 7 DAYS A WEEK

13740 Doolittle Dr. • San Leandro
(Marina Faire Shopping Center)
510-924-7959 • Fax: 510-969-8739

COMMIT YOUR FAMILY TO BE FIT!

We Are Different From Other Fitness Clubs.
We Have A Family Atmosphere!

**Full Gym • Over 40 Group Exercise Classes • Lap Swimming Year-round
Aqua Aerobics • Swim Lessons • Pro Tennis Lessons • Kids Pool
Pickleball Groups & Socials! & Babysitting \$3**

Limited Time Offer
NO INITIATION FEE!*
Save \$400 - \$800
& **FEBRUARY FREE**

*When you join early and pay your first 2 months dues.
Subject to change without notice.
Offer exp. 3/1/20

GUEST TICKETS HALF PRICE SALE! Offer Exp. 2/29/20

KIDS CLUB
Babysitting \$3hr.
With New FEB. Membership

Join Our Club Where Everyone Knows Your Name.
Be A Part Of Something!

FREE KID FIT CLASSES after school!

Bay-O-Vista

Private Family Fitness, Gym, Swim & Tennis Club

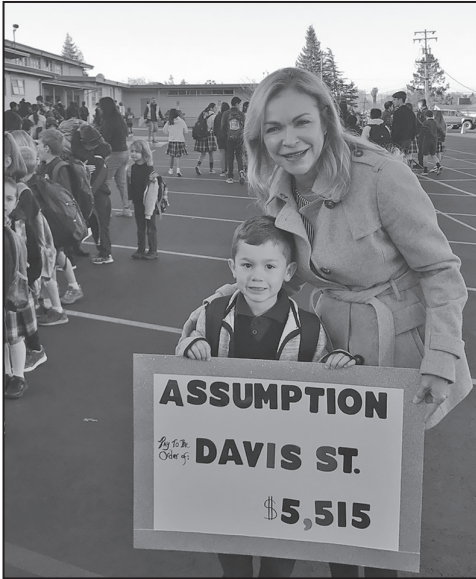
Check Us Out on Facebook or Our Website. Look for All Features & Benefits.
WWW.BOVSWIM.COM

LIMITED AVAILABLE SLOTS
FREE TOURS-No Appointments

Monthly Dues for Families = \$237 | Monthly Dues for Singles = \$228 | Membership includes the whole family up to 6 members. Lockers \$9.

Located on corner of 1881 Astor Dr. & Lake Chabot Rd., San Leandro
510-357-8366 • swim@bovswim.com

NEIGHBORS



Davis Street director Rose Johnson (left) with student and with Brian Copeland.



Brian Copeland's Fundraiser Benefits Breakfast Program

Assumption School announced \$5,515 funds raised from St. Nick's Boutique raffle and fundraiser will go to Davis Street's Hot Breakfast Program.

The Hot Breakfast Program Fundraiser began in 1995 by actor, comedian, and Assumption School alumni Brian Copeland to support Davis Street's preschoolers. According to Davis Street, most families enrolled in Davis Street's child development centers can't afford

to provide their children with a hot meal every morning. The Hot Breakfast Program was designed to support these families by providing hot meals five days a week at Davis Street's subsidized centers.

Davis Street says many thanks to Brian Copeland, Assumption School Principal Lana Rocheford, all teachers, staff, parents, and students for helping provide this support to children-in-need throughout the years.

ARTS & ENTERTAINMENT

❖ Chanticleers Theatre Steel Magnolias

Steel Magnolias opens at the Chanticleers Theatre, 3683 Quail Ave. in Castro Valley,

runs through March 1. The show plays on Fridays and Saturdays at 8 p.m., and Sundays at 2 p.m. Tickets are \$22 to \$27 and may be purchased online at

chanticleers.org or by calling 510-SEE-LIVE (510-733-5483). Group discounts also available. *Steel Magnolias* is a stage play by American writer Robert Harling, a comedy-drama about the bond among a group of Southern women in northwest Louisiana. The title suggests the female characters are as delicate as magnolias but as tough as steel. The magnolia specifically references a magnolia tree they are arguing about at the beginning. Harling based this play on his experience with his sister's death. Director, actor, and designer spanning four decades in West Coast theatre, Kendall Tieck will make his Chanticleers Theatre directing debut with *Steel Magnolias*.

READ & RECYCLE!

WATCH BATTERIES DONE RIGHT

ALLPHIN JEWELERS

Since 1923

155 Parrott Street
San Leandro • 357-3442

Wednesday-Friday 11am-5pm
Saturday 11am-4pm

HOROSCOPE by Salomé

© 2019 King Features Synd., Inc.



ARIES (March 21 to April 19) Having second thoughts could be a good thing, even if you're determined to go through with your plans. You might find it worthwhile to take a fresh look at how things have been set up.



TAURUS (April 20 to May 20) Financial matters could continue to be a problem until you're able to straighten out some of the more pesky situations. Once that happens, the rest should be easier to unravel.



GEMINI (May 21 to June 20) Family matters once again take center stage, and should be dealt with competently and quickly. And, again, insist on others taking on their fair share of the responsibilities.



CANCER (June 21 to July 22) Your creative pursuits seem to be running into a roadblock. But rather than blame outside factors, look within to see if you might be holding back your efforts for some reason.



LEO (July 23 to August 22) Keep that keen Cat's Eye focused on relevant aspects of this new situation in your life. Don't be distracted by trivial matters. You need the pertinent facts before making a decision.



VIRGO (August 23 to September 22) As much as you prefer doing things on your own, continue to accept help if you still need to resolve the problem affecting your project. Some cheerful news is about to come your way.



LIBRA (September 23 to October 22) While you might begrudge the added time it will take to get your project from point A to B to C, etc., you could benefit from the facts that will emerge over this expanded time span.



SCORPIO (October 23 to November 21) Regarding your workplace suggestions, be prepared to produce the facts to counter reactions from skeptics who feel your approach is unreasonable or even impossible.



SAGITTARIUS (November 22 to December 21) Savvy Sagittarians will look for work-related answers on their own rather than rely on unproved assumptions. It might take more time to do so, but the payoff is worth it.



CAPRICORN (December 22 to January 19) Your aspects continue to favor family issues, with special emphasis this week on changes in and around your home. Get everyone to suggest what he or she would like to see done.



AQUARIUS (January 20 to February 18) A matter you thought had been settled might still produce surprises. Best advice: Continue to gather facts to bolster your position just in case you need to produce them quickly.



PISCES (February 19 to March 20) While your instincts are usually right when discerning 'twixt truth and deception, you could benefit from doing more research on the new "prospect" that you've been pitched.

COMMUNITY CALENDAR

Deadline for Calendar Items is Friday for the Following Week



❖ **Library to Screen *Last Black Man in SF***
The San Leandro Main Library, 300 Estudillo Ave., invites the community to enjoy some soul food from local restaurant Southern Café and a free screening of the film, *The Last Black Man in San Francisco*, on Saturday, Feb. 29, from 5:30 to 8 p.m. Adults 18 years old and over may attend this after-hours event in celebration of Black History Month. Refreshments will be provided from 5:30 to 6 p.m., and the film runs from 6 to 8 p.m. The film won the 2019 Sundance Film Festival Best Directing award.

❖ **San Leandro Schools Planning Meeting**
The San Leandro Unified School District is planning for the future. Attend the district's upcoming Local Control Accountability Plan (LCAP) community forum. This meeting will also include details about the facilities improvement bond, Measure N, which is on the ballot for March 3. The meeting will be on Saturday, Feb. 29, from 9 to 10:30 a.m., at the Barbara Lee Health Center (2251 Bancroft Ave.), presented in English.

❖ **Celebrate African American History Month**
The Manor Branch Library, 1241 Manor Blvd. in San Leandro celebrates African American History Month with a fun family event, Samba Samba Kids with music with James Henry on Saturday, Feb. 29, at 2:30 p.m. For more information, call 510-577-7971.

❖ **I.D.E.S. St. John Crab Feed**
I.D.E.S. St. John, 1670 Orchard Ave. in San Leandro, will have its annual Crab Feed on Saturday, Feb. 29, from 6 to 10 p.m. The dinner comes with salad, pasta, garlic bread, and dessert. Tickets are \$55 per person, and \$25 for children 6 to 12 years old. For more information or tickets, call Darlene at 510-589-6536, Willie at 510-207-6326 or Frances 510-886-1568.

❖ **Buon Tempo Club Dinner**
The Buon Tempo Club is having a family dinner on Tuesday, March 3, at 7 p.m. at Mt. Tabor Hall, Transfiguration Church, 4000 E. Castro Valley Blvd. in Castro Valley. Everyone is welcome. Chef Joseph Sotello and crew will serve a 5-course, family-style dinner of corned beef and cabbage, along with red and white wine. Happy hour is 6 p.m. The dinner is \$15 for members, \$20 for non-members. Make reservations by Friday, Feb. 28, by calling the Buon Tempo dinner line at 510-483-6929.

❖ **Parkinson Support Group Meeting**
The Parkinson Support Group will hold its monthly meeting on Thursday, March 5, at 10:30 a.m. at the San Lorenzo Community Church, 945 Paseo Grande in San Lorenzo. Aaron Wong from Spectrum in Alameda County will speak on fall prevention. For more information, call Loma White 510-276-3119.

❖ **Personal Computer Users Group**
The next monthly meeting of the Personal Computer Users Group will be Friday, March 6, at 7:30 pm at Calvary Baptist Church, 28924 Ruus Road in Hayward. A presentation about Raspberry Pi (RPi) will be made by Jan Fagerholm, followed by questions and answers. For more information, visit <http://www.pcc.org> or call 510-278-5192.

❖ **Meeting of the SL Readers Roundtable**
The San Leandro Readers Roundtable will meet on Saturday, March 7, at 2 p.m. at the San Leandro Main Library, 300 Estudillo Ave., to discuss *The Line Becomes a River: Dispatches from the Border*, Francisco Cantu's memoir of his time as an immigration agent along the Unit-

ed States-Mexico border. All are welcome, and all books discussed are available for purchase in the Library's Booktique bookstore.

❖ **Marine Corps League**
The Marines of the 1st Lt. Frank Reasoner Detachment #919 are looking for a few good men. This Detachment meets the second Saturday of each month at 9 a.m. at the San Leandro Veterans Memorial Building, 1105 Bancroft Ave. in San Leandro. The Detachment supports all Marines and FMF Corpsman, active, retired and former. For more information, call Bill Smith at 925-997-8041.

❖ **"Open Cockpit Day" at Aviation Museum**
Hop into the cockpit of a famous fighter plane at the Oakland Aviation Museum's "Open Cockpit Day" on Sunday, March 8, from noon to 4 p.m. at Oakland Airport's North Field, 8252 Earhart Road in Oakland, just off Doolittle Drive. Visitors can view famous aircraft, including the A-3 Skywarrior, A-7 Corsair, and sit in a Harrier jump jet, or a MiG-15. The huge flying boat, the Short Solent Mk 111 that was used in the movie *Raiders of the Lost Ark*, will be open for tours for an additional fee. Activities include a ham radio exhibit, oldies Bay Area car exhibit, live music by the Friends of Ken Band, and a roller derby demonstration.

❖ **Volunteers Needed for Family Support**
Eden is looking for volunteers to build its Family Support Services group to serve as a liaison between family, physicians and other medical staff and concentrate on providing comfort and emotional support to family members at the hospital. Volunteers will be based in the emergency room. Candidates who qualify will display friendly, positive, helpful and professional attitude; work well with patients, family members and staff; ability to display compassion and have a caring nature; and ability to make a one-year commitment. To apply, contact: Meri Johnson-Wicks at johnswm@sutterhealth.org or 510-727-3124.

❖ **Umpires Needed**
The Hayward Softball Umpires Association is recruiting year-round to work paid Hayward Area Recreation and Park District (HARD) softball games – men's, women's and co-ed slow pitch. The umpires association trains all age groups. It's a great way to earn some extra money. For more information, call the association's educational director at 510-586-8592 between 9 a.m. and 9 p.m.

❖ **St. Felicitas Young at Heart Luncheon**
St. Felicitas Church's Young at Heart Senior Luncheon is Wednesday, March 18, at Monsignor McGinty Hall located behind the church at 1662 Manor Blvd. in San Leandro. March's luncheon will feature crispy chicken tenders and macaroni and cheese lunch with dessert, beverage and door prizes. Doors open at 11:15 a.m. Lunch is served at noon. Tickets can be purchased at the church office, by calling 1-510-351-5244, located to the right of the church. Last day to buy tickets is Friday, March 13, at noon. No ticket sales at the door. The cost is \$6. All seniors our welcomed.

❖ **Veterans Town Hall at SL Library**
The Veterans Resource Center will host the VA Palo Alto Health Care Systems FY 2020 2nd quarter veterans town hall on Tuesday, March 10, from 6 to 7 p.m. at the San Leandro Main Library, 300 Estudillo Ave. Get great information related to VA Healthcare's new component, community care, and learn about VA updates that bring you greater veteran's entitlements.

George Mark Children’s House Breaks Ground on New Garden

Groundbreaking features local politicians and civic leaders

George Mark Children’s House (GMCH), the first free-standing pediatric palliative care center in the United States, hosted a groundbreaking ceremony with generous contractors, local politicians and civic leaders to commemorate a new restorative garden on Thursday, Feb. 20.

The garden was designed pro bono by award-winning

“We are thrilled to extend our therapeutic space into more of the great outdoors.”

— Dr. Kathy Hull, founder of George Mark Children’s House

Arterra Landscape Architects. It will transform the last undeveloped outdoor area at George Mark Children’s House into an eco-friendly space and it fits into the bucolic esthetic of the house and landscaping. The garden is also usable for GMCH’s fragile patient population, their families,

and the staff and volunteers. The Garden is scheduled for completion by the summer. It will include wheelchair accessibility, shaded seating, accessible raised planting beds, a sensory garden, outdoor kitchen, hilltop overlook, interactive sculpture, and art and water features.

Construction will involve over 40 contractors and suppliers who have also donated their expertise, labor, and materials. The value of services donated will exceed half a million dollars. GMCH is seeking the community’s support to complete the restorative garden to better enhance service for its patients, families, staff and volunteers.

“We are thrilled to extend our therapeutic space into more of the great outdoors,” said George Mark Children’s House Founder Dr. Kathy Hull. “Our patients and their families can look forward to warm days in the sunshine, the soothing sound of water, and shady nooks for contemplation. We are profoundly grateful for the generosity and the expert, thoughtful design provided by Arterra Landscape Architects and our contractors.”

In attendance at the ceremonial groundbreaking were Alameda County Supervisor Wilma Chan and representatives



PHOTO COURTESY OF GMCH

Joining in the groundbreaking ceremony are Kate Stickley, Radiat Bayeh, Karishma Khatri, George Mark Children’s House founder Dr. Kathy Hull, and Alameda County Supervisor Wilma Chan.

of Senator Bob Wieckowski and Assemblyman Rob Bonta along with San Leandro Chief of Police Jeff Tudor. The civic leaders and generous contractors were thrilled to break ground on the worthy project.

About George Mark Children’s House
George Mark Children’s House (GMCH) is the first pediatric palliative care center in the United States. The 15,000 square foot medical facility in San

Leandro provides life affirming care for children with illnesses that modern health care cannot yet cure, or for those who have complex medical conditions. GMCH bridges the gap between hospital and home, offer-

ing safe, excellent medical care in the comfort and warmth of a home-like setting for patients who do not need the resources of a full children’s hospital. The facility sits on an impeccably landscaped five-acre lot.

Main Library to Screen ‘Last Black Man in SF’

The San Leandro Main Library, 300 Estudillo Ave., invites the community to enjoy some soul food from local restaurant Southern Café and a free screening of the film, “The Last Black Man in San Francisco,” on Saturday, Feb. 29, from 5:30 to 8 p.m. Adults 18 years old and

over may attend this after-hours event in celebration of Black History Month. Refreshments will be provided from 5:30 to 6 p.m., and the film runs from 6 to 8 p.m. “The Last Black Man in San Francisco” (Rated R), won the 2019 Sundance Film Festival Best Directing award.

Scholarships For Students Pursuing Medical Degrees

San Leandro Hospital Auxiliary has scholarships for medical students

The San Leandro Hospital Volunteer Auxiliary is now accepting applications for its annual health care scholarship program. Each year, the Auxiliary

awards scholarships to college students and graduating high school seniors pursuing medical careers. To be eligible, these students must live in San Leandro or San Lorenzo and enroll in healthcare-related studies. Scholarships will be awarded in June for studies in the fall. Since 1972, the San Leandro Hospital Auxiliary volunteers

have donated more than \$500,000 in scholarships. Past scholarship recipients have gone on to become physicians, nurses and health professionals. Applications are available at the information desk or in the gift shop in the lobby of San Leandro Hospital, 13855 East 14 St. Students can also request an application from a career coun-

selor at San Leandro or Arroyo high schools. The deadline to apply is April 10. For more information about the San Leandro Hospital Auxiliary scholarship program or if you are retired and interested in volunteering at the hospital, call 510-667-4501 between 10 a.m. and 4 p.m., Monday through Friday.

LEGAL NOTICE

FILED
JANUARY 22, 2020
MELISSA WILK
County Clerk
ALAMEDA COUNTY
By-----, Deputy
FILE NO. 567719

FICTITIOUS BUSINESS NAME STATEMENT
Pursuant to Business and Professions Code Sections 17900-17930
The name of the business(es): Concrete Rock Stamp Rental and More located at 16530 East 14th Street, San Leandro, CA 94578, in Alameda County, is hereby registered by the following owner(s): Wendy Karina Nunez, 424 Pacifica Ave., Baypoint, CA 94565. This business is conducted by an individual. This business commenced N/A. /s/ Wendy Karina Nunez
This statement was filed with the County Clerk of Alameda County on date indicated by file stamp above.
Expires JANUARY 22, 2025
FEB 06, 13, 20, 27, 2020
0218-SLT

FILED
JANUARY 30, 2020
MELISSA WILK
County Clerk
ALAMEDA COUNTY
By-----, Deputy
FILE NO. 568102

FICTITIOUS BUSINESS NAME STATEMENT
Pursuant to Business and Professions Code Sections 17900-17930
The name of the business(es): Pediatric Language Therapy Associates located at 2242 Washington Ave., San Leandro, CA 94577, in Alameda County, is hereby registered by the following owner(s): Claire Ibrahim, 8033 Earl St., Oakland, CA 94605. This business is conducted by an individual. This business commenced N/A. /s/ Claire Ibrahim
This statement was filed with the County Clerk of Alameda County on date indicated by file stamp above.
Expires JANUARY 30, 2025
FEB 06, 13, 20, 27, 2020
0221-SLT

FILED
JANUARY 29, 2020
MELISSA WILK
County Clerk
ALAMEDA COUNTY
By-----, Deputy
FILE NO. 568025

FICTITIOUS BUSINESS NAME STATEMENT
Pursuant to Business and Professions Code Sections 17900-17930
The name of the business(es): BLACK MEN LIFE Insurance Foundation located at 1972 Quebec Ave., San Leandro, CA 94579, in Alameda County, is hereby registered by the following owner(s): BLACK MEN LIFE Insurance Foundation, 1972 Quebec Ave., San Leandro, CA 94579. This business is conducted by a corporation. This business commenced 1/29/2020. /s/ BLACK MEN LIFE Insurance Foundation
This statement was filed with the County Clerk of Alameda County on date indicated by file stamp above.
Expires JANUARY 29, 2025
FEB 13, 20, 27, MAR 05, 2020
0222-SLT

FILED
JANUARY 22, 2020
MELISSA WILK
County Clerk
ALAMEDA COUNTY
By-----, Deputy
FILE NO. 567713

FICTITIOUS BUSINESS NAME STATEMENT
Pursuant to Business and Professions Code Sections 17900-17930
The name of the business(es): Cummings Construction located at 3937 39th Avenue, Oakland, CA 94619, in Alameda County, is hereby registered by the following owner(s): Constructive Building Services, Inc., 3937 39th Avenue, Oakland, CA 94619. This business is conducted by a corporation. This business commenced 11/18/1999. /s/ Constructive Building Services, Inc.
This statement was filed with the County Clerk of Alameda County on date indicated by file stamp above.
Expires JANUARY 22, 2025
FEB 20, 27, MAR 05, 12, 2020
0226-SLT

FILED
FEBRUARY 04, 2020
MELISSA WILK
County Clerk
ALAMEDA COUNTY
By-----, Deputy
FILE NO. 568238

FICTITIOUS BUSINESS NAME STATEMENT
Pursuant to Business and Professions Code Sections 17900-17930
The name of the business(es): P.E.A.C.E. located at 1650 152nd Avenue, San Leandro, CA 94578, mailing address P.O. Box 32443, Oakland, CA 94604 in Alameda County, is hereby registered by the following owner(s): The Peoples’ Eclectic and Aware Church of Enlightenment, 1650 152nd Avenue, San Leandro, CA 94578. This business is conducted by a corporation. This business commenced Feb. 1, 2020. /s/ The Peoples’ Eclectic and Aware Church of Enlightenment
This statement was filed with the County Clerk of Alameda County on date indicated by file stamp above.
Expires FEBRUARY 04, 2025
FEB 20, 27, MAR 05, 12, 2020
0229-SLT

FILED
FEBRUARY 13, 2020
MELISSA WILK
County Clerk
ALAMEDA COUNTY
By-----, Deputy
FILE NO. 568556

FICTITIOUS BUSINESS NAME STATEMENT
Pursuant to Business and Professions Code Sections 17900-17930
The name of the business(es): Beefront Studio located at 16470 Foothill Blvd., San Leandro, CA 94578 in Alameda County, is hereby registered by the following owner(s): Andrew Yu, 16470 Foothill Blvd., San Leandro, CA 94578. This business is conducted by an individual. This business commenced N/A. /s/ Andrew Yu
This statement was filed with the County Clerk of Alameda County on date indicated by file stamp above.
Expires FEBRUARY 13, 2025
FEB 27, MAR 05, 12, 19, 2020
0234-SLT

AUTOMOTIVE

Lexus Hybrid Sips Gas in Style

By Steve Schaefer
San Leandro Times

Lexus is Toyota's luxury brand, so you expect extra style, comfort, and maybe even performance when you opt for the "L" instead of the "T" logo on nose and tail. The ES 300, now in its seventh generation, remains a pleasant midsize sedan. After a major styling upgrade last year, it's carryover for '20, but continues to offer a hybrid version for people who are not enraptured by SUVs. It's one of six Lexus hybrids.

The look is hardly placid, as were earlier models, although there is a new shade of beige available this year. Toyota, and Lexus in particular, are going all-out for in-your-face styling, so the front of this car takes the giant spindle grille in an even more evocative direction. With carefully crafted pieces, it sprawls over the face of the car and positively radiates with energy to the eye. It must take some sophisticated CAD CAM to draw and build that. Sharply drawn headlamp pods and jaunty corner air vents all contribute to the intense, sharp-edged design.

Inside, a large center screen makes it easy to use Apple CarPlay and deal with other necessities. Comfort is naturally expected and enjoyed within, while not mimicking German or American styling. You know it's a Lexus by the touch pad on the center console where

you just slip your finger up and down or side to side and press to select items on the eye-level screen. It works well most of the time.

I wasn't enamored with the textured faux-looking wood trim (\$540) but there were no other complaints about riding in this cushy car.

The major difference between the ES 300h and its sibling, the gas-powered ES 350, is what's under the hood. To generate much higher EPA miles-per-gallon numbers, Lexus puts a 2.5-liter four-cylinder in with a high-density motor and nickel-metal-hydrate battery (now moved from the trunk to under the rear seat), which together put out 215 horsepower. This will launch the 300h from 0-60 in a respectable 8.1 seconds. But the V6 in the ES 350 offers 302 horsepower and will do 0-60 in 6.6 seconds. Hmm—that sounds better.

But—when you look at the EPA fuel economy numbers, it reverses, and the 300h earns 44 mpg Combined versus just 26 mpg for the 350. It's up to you what's more important, but of course I'm hoping it's the hybrid. The hybrid's EPA green scores are a tidy 7 for Smog and 9 for Greenhouse Gas. It'll save you \$3,000 in fuel costs over five years versus the average car.

It always amazes me that you can get a luxury car but then add so much to it. In this case, my Atomic Silver test car carried \$10,945 worth of

options, driving the base price of \$41,760 to \$52,505 (plus \$1,025 delivery). Some is safety related, like the Blind Spot Monitoring with Rear Cross-Traffic Alert and Parking Assist (\$1,065). Some is flash, like upgrading to 18-inch split-spoke alloys (\$770). Handy is the head-up display (\$500). The Mark Levinson audio and navigation sounds wonderful, and it had better for a \$2,900 premium.

However, do you really need to pay \$550 for a hands-free power trunk lid or \$400 for illuminated door sills? It must have something to do with the kind of buyer who wants to customize their car that so many choices exist. The list does make me wonder if anyone ever orders the car without all of these items. Perhaps it's just broken out this way, and all ES 300h's are shipped to the dealers loaded.

It says something that I didn't make any notes about the ES 300h driving experience. It was nice, but I don't remember a thing. There is a whole lot more insulation in the floor, so you know it was a quiet week. The new model (starting with the '19) comes on a robust new chassis, allowing the engineers to better control noise and harshness as well as finely tune the ride. Suspension changes have led to a higher quality feel, as well—or so they tell me.

The hybrid control system delivers more linear acceleration, reducing the tendency of



To generate higher EPA miles-per-gallon numbers, Lexus puts a 2.5-liter four-cylinder in with a high-density motor and nickel-metal-hydrate battery which together put out 215 horsepower.

hybrid vehicles to have a "rubber band" feel. And, Auto Glide Control improves efficiency by adding a "coast" mode, so the car slows more predictably, reducing the switch from accelerator to brake pedal while braking.

Lexus' midsize luxury sedan is forced to compete with German, Swedish, American, Korean, and other Japanese products. Lexus has carved out an enviable reputation now, so this better, more attractive, and more feature-filled new ES 300h should do well in the market segment. With its higher fuel economy, it is a more responsible citizen, as well. I'm still waiting for the fully electric one, though (ES 300e?).

Steve Schaefer lives in Castro Valley. He has been reviewing new cars in the Times for 28 years.



The Mark Levinson audio and navigation sounds wonderful, and it had better for a \$2,900 premium.

HOCUS-FOCUS BY HENRY BOLTINGOFF

Find at least six differences in details between panels.

©2020 King Features Syndicate, Inc.

Differences: 1. Boy's shoe has changed. 2. Tree is missing. 3. Freckles are added. 4. Girl's shoe has changed. 5. Tree is missing. 6. Flowers are different.

RIDDLE CARD

1. What jack is a sailor?
2. What jack is a game?
3. What jack tastes good?
4. What jack clouds your windows?
5. What Jack is seldom hit?
6. What Jack has no body?

Answers: 1. Jack tar. 2. Jackstraws. 3. Flapjack. 4. Jack Frost. 5. Jackpot. 6. Jack-o-Lantern.

WHAT KIND of a puzzler will you be if you solve all of these riddles?

Answer: You will be a Crackerjack puzzler!

DON'T STEW OVER THIS ONE! The label on the basket has nothing to do with ounces or the Wizard of Oz. What does the basket contain?

Answer: Turn the page on its side and read down. The basket contains an "onion."

A COLONIAL PUZZLE! Pictured below are two puzzle grids. Each grid contains 4 words which the reader must discern. Hints are given for each word and the words in Grid B contain the same letters as the corresponding words in Grid A.

1. Superman has one.
2. Told a falsehood.
3. Found in a church.
4. Affirmative votes.

C			
L			
A			
Y			

P			
I			
P			
E			

1. A rate of speed.
2. Not employed.
3. Some are sweet.
4. Posing no difficulty.

Junior Whirl by Charles Barry Townsend

THE PYRAMID OF WORD POWER!

Starting with the word ABROGATE at the bottom of our word pyramid, try dropping one letter at a time, as you work your way up, so that the remaining letters at each level spell out a new word. To make the challenge harder, the following helpful hints are not in ascending order:

1. A period of time.
2. To speak formally.
3. An airplane stunt.
4. An Egyptian sun god.
5. To abolish.
6. To pull apart.
7. A straw hat.
8. A blood type.

ABROGATE

Illustrated by David Coulson

Answers (from the bottom up): Abrogate, aerobate, boater, orate, tear, era, ra, a.

LIFESTYLE



Stalking the Tangy Rhubarb

For those who've never tasted rhubarb — and there are a lot of you out there — you've been missing one of nature's real treats.

While technically a vegetable, rhubarb is mainly eaten as a fruit in desserts, usually pie.

The plant makes a beautiful addition to any garden with its huge, green, crinkly leaves, although it does take up a lot of space. One caution about those leaves—they're toxic. That's why they're removed before the stalks show up in the market.

Buy rhubarb that is firm, crisp and well-colored (pink or red), avoiding any stalks that are limp or pithy. Wrap it in plastic and refrigerate it unwashed as soon as you bring it home.

Use it as soon as possible, washing the stalks at that time and removing any leaf remnants. Young stalks don't need to be peeled.

A pound of rhubarb yields about three cups sliced. The general guideline for sweetening is 1/3 to 1/2 cup of sugar per pound, but it is a matter of variety and personal preference.

ELEGANT RHUBARB CUSTARD PIE

Filling:

- 1-1/2 pounds rhubarb (about 4 cups), cut into 1/4-inch slices
- 3/4 cup sugar
- 2 tablespoons flour
- 1 tablespoon lemon juice
- 1/8 teaspoon salt
- 1 9-inch single-crust pastry

Topping:

- 3 eggs
- 1 cup heavy cream
- 2 tablespoons melted butter
- 1/4 teaspoon grated nutmeg
- 2 tablespoons sugar

For the filling, combine rhubarb slices with sugar, flour, lemon juice and salt in a bowl. Toss to mix and turn into pie shell. Bake in hot oven at 400°F for 20 minutes.

For the topping, beat eggs slightly in a bowl. Stir in cream, butter and nutmeg to blend. Pour over rhubarb in pie shell and bake

another 10 minutes. Sprinkle with sugar and bake 10 more minutes or until the top is browned.

Cool before cutting. Yields 6 servings.

RHUBARB CHIFFON PIE

Pastry for 9-inch double-crust pie

- 3 large stalks of rhubarb, cut into 1/2-inch chunks
- 1 cup sugar
- 3 tablespoons flour
- 1 tablespoon butter, softened
- 2 eggs, beaten
- 1 teaspoon grated orange peel

Put rhubarb chunks in pie shell. Mix sugar, flour and butter, add eggs and orange rind and mix. Pour over rhubarb chunks, top with crust, sealing edges, and bake in preheated 400°F oven for 50 to 60 minutes or until done.

RHUBARB & STRAWBERRY PIE

- 1 cup sugar
- 3 cups rhubarb stalks cut into 1/2 inch pieces
- 1 cup strawberries, stemmed and sliced
- 3 tablespoons quick-cooking tapioca

- 1/4 teaspoon of salt
- 1 teaspoon of grated orange peel
- Unbaked pastry for two-crust 9-inch pie

Preheat oven to 400°F.

Mix rhubarb and strawberries with the sugar, tapioca, salt, and orange rind. Let sit for 10 minutes.

Turn into a pastry lined pan. Top with the pastry, trim the edge, and crimp the top and bottom edges together. Cut slits in the top for the steam to escape.

Bake at 400°F for 20 minutes, reduce heat to 350°F, and bake an additional 30-40 minutes longer. Cool on a rack. Serve warm or cold. If you do cool to room temperature, the juices will have more time to thicken.

RHUBARB CHEESECAKE

- 1 (9-inch) unbaked pie shell
- 3 cups chopped fresh rhubarb
- 1/2 cup white sugar
- 3 tablespoons flour
- 1 (8-ounce) package cream cheese, softened
- 1/2 cup sugar
- 2 eggs
- 8 ounces sour cream
- 2 tablespoons sugar
- 1 teaspoon vanilla extract

Preheat the oven to 400°F.

In a medium bowl, toss the rhubarb with 1/2 cup of sugar and the flour. Pour into the pie shell. Bake

for 15 minutes in the preheated oven. Remove, and allow to cool. Lower oven temperature to 350°F.

In a medium bowl, stir together the cream cheese and 1/2 cup of sugar until smooth. Stir in the eggs one at a time until each is blended. Pour this mixture over the rhubarb in the crust.

Bake for 30 minutes in the preheated oven, or until set. Remove from the oven, and set aside. In a small bowl, stir together the sour cream, 2 tablespoons of sugar, and vanilla. Spread over the top of the pie while it is hot. Cool to room temperature, then refrigerate until chilled before serving. Yields 8 servings.

RHUBARB CRISP

- 1 cup flour
- 1/3 cup dark brown sugar
- 4 teaspoons granulated sugar
- 1/8 teaspoon cinnamon

- 1/3 cup softened butter
- 1/2 cup toasted walnuts
- 2 pounds rhubarb
- 1/2 pint strawberries, sliced (optional)
- 3/4 cup sugar
- 3 tablespoons flour

For the topping, mix first 4 ingredients, then work in butter until mixture begins to look crumbly.

Wash and trim rhubarb and cut into 1/2-inch thick slices, yielding 6 to 7 cups. Toss rhubarb (and, if desired, sliced strawberries) with the 3/4 cup sugar and 3 tablespoons flour and let stand until sugar draws out some of the fruits' moisture.

Put in a 9-inch pie plate and smooth out. Sprinkle topping over rhubarb mixture and bake at 375°F for 45 minutes or until juices bubble up around the edges. If top browns too quickly, cover with foil. Serves 6 to 8.



159 PARROTT STREET (510)858-0771
www.startingpointptlc.com

Being injured is hard enough, PT can help!
**Every recovery needs a place to start,
Let us be yours!**

City of San Leandro's Home Earthquake Strengthening Course

The City of San Leandro is again offering its nationally recognized and award-winning Home Earthquake Strengthening Course to homeowners. This is a "do-it-yourself" course geared towards owners of older, raised-floor homes. Homeowners will be shown how to identify and strengthen structural weaknesses in their homes. Upon completion of this four-day course, each homeowner will have a customized blueprint for their seismic project.

If you own a hillside home, please contact the Division of Building & Safety at (510) 577-3405.

When: March 5, 10, 12, and 17
This is a four-day course.

Where: The Senior Community Center @
13909 E. 14th Street,
San Leandro, Main Hall B

Time: 6:00 to 8:00 p.m.

Cost for City of San Leandro Residents:

\$30.00 for single / \$35.00 for couples

Cost for Non-Residents / Unincorporated

San Leandro: \$50.00 for single / \$60.00 for couples

Class size is limited.

**REGISTRATION BY MAIL
OR PHONE**

ON A FIRST-COME, FIRST-SERVE BASIS

For more information, please call Division of Building & Safety Services at (510) 577-3405.

TO REGISTER: Please mail your payment and information or call:



City of San Leandro
Building Division
835 E. 14th Street
San Leandro, CA 94577
(510) 577-3405

sheets • rods • tubes • film • hard-to-find plastics



Mr. Plastics™
Celebrating 34 years!

NEW LOCATION: 844 Doolittle Drive
OPEN TO THE PUBLIC

web: mr-plastics.com

510-895-0774

fabrication • cnc machining • design • prototypes

Celebrating 65 Years!

**Buy One Lunch or Dinner and Get
2nd Meal 1/2 OFF, of equal or
greater value, from Regular Priced
Menu with this Ad. Not good with
any other offer. Expires 03-10-20**



Family Owned since 1957

**Patio Dining
Banquets**

"Have Your Party Here!"

All Food Prepared Fresh Daily
Cocktails and Catering

Call for Take-Out Orders

510.276.1793



15508 E. 14th St., San Leandro (Across from Bayfair Center)

Open: Wed. - Sun. 11am - 10pm/Closed Monday + Tuesday

For Birthdays, Parties & Banquet Information Call Us Today!

Climate: City officials say wastewater treatment plant 'at risk'

continued from front page
as well as feel safe.

"Roads are terrible for bikes and electric scooters," said another person who suggested greatly improving bike lanes.

Electric shuttles throughout the community were suggested by one group, and another suggested expanding the Link Shuttle in frequency and in the areas it serves.

Bus transit can be hostile to seniors, another group said, in that not all buses "kneel" to let on less-mobile passengers, and some drivers don't operate the mechanism even when it is available and clearly needed.

Driving can be cheaper than using BART, another group said, making cost a barrier to greater use of BART.

Shutting some streets to traffic some days or all of the time was suggested. Those streets would then become permanent or temporary pedestrian malls.

One group pointed out that higher housing density would enable more use of mass transit. Housing stability would help, too, another group said.

Other suggestions involved greener living in one's house or apartment. There should be tax credits for more recycling, while another suggested bulk purchase of solar panels and storage batteries so that homeowners would



PHOTO BY MIKE MCGUIRE

A good crowd attended last Thursday's meeting on San Leandro's Climate Action Plan.

break even on the purchase within five years rather than the current 10 to 15 years.

To encourage thrifter use of household resources, participants suggested tool-sharing programs and fix-it days to promote do-it-yourself repair of still-usable appliances and other items.

One group suggested more community exchange sites where one can safely buy and sell goods often first found on the internet.

Dr. Mok and other city officials reported on climate change

progress and challenges so far.

The city is on track to meet a state mandate of reducing greenhouse gas emissions 25 percent below 2005 levels by 2020, officials said. That target rises to a 40 percent reduction by 2030, and to 80 percent by 2050.

San Leandro's biggest emissions source in San Leandro is cars and trucks. While these have gotten cleaner, people are driving more than in the past, limiting gains, according to Mok.

An average house used less

natural gas in 2017 (the latest year for which figures were available) than in 2005, but used more electricity. However, the city's electricity was cleaner, with 33 percent coming from renewable sources in 2017 compared to 12 percent in 2015, officials said.

The average San Leandran threw away 39 percent less garbage in 2017, compared to 2005, according to the city.

BART ridership in San Leandro was up 39 percent in 2017 from 2005 levels, officials said.

Besides greenhouse gases, the plan also assesses in what areas and in what ways San Leandro is especially vulnerable to climate change, and how to reduce that vulnerability.

According to the city's Vulnerability Assessment, posted at the meeting, we can expect to see more extreme heat days (of 90-degree temperatures or above) in coming years, along with a 34 percent increase in areas burned by wildfires in the Bay Area each year, and temporary or permanent flooding of parts of San Leandro from sea level rise in decades

to come.

Flooding risk is greatest nearer the Bay, in neighborhoods such as Mulford Gardens, Marina Faire, Mission Bay and Heron Bay, according to the assessment.

The wastewater treatment plant is at risk from bay shore flooding and sea level rise, as are San Leandro's industrial areas, said the assessment.

Extreme heat days, along with smoke from wildfires, poses the most risk to seniors, poor people and homeless people, the assessment said.

Supervisor: Goolsby wants more housing

continued from front page
general election ballot.

Efforts to reach Ms. Goolsby for this article were unsuccessful.

Goolsby's website calls for "new energy, ideas, policies, improvement in oversight and existing procedures and renewed collaborative practices" in county government.

It also calls for equitable plans for climate-resiliency, along with decreasing pollution from large stationary sources.

On housing, Ms. Goolsby wants to close "any loopholes"

in statewide rent control that let landlords raise rents.

"I seek to prioritize building multi-family unit housing and apartments to keep up with our rising population and also ensure that we have protections in place for Alameda County natives to be able to move back to the cities they are from," she wrote.

Goolsby was a prominent advocate for having Oakland Coliseum development plans be community-oriented with affordable housing rather than see SUPERVISOR, page 16

Lead: SLZ schools work to get the lead out

continued from front page

"One part per billion would be great. That would make students' I.Q.s rise. Thank you for your time," the fifth-graders said to the school board.

Lead has been linked to damage to the central nervous system, learning disabilities, lower I.Q.'s, and other health problems. Lead can get in the water from buildings with lead pipes or lead in solder joints.

Lead contamination tends to be worse when water sits in the pipes, less when the water has been running.

California schools were required to test their drinking water for lead by the summer of 2019. Lead was found in communities throughout the state, from cities to affluent suburbs. An elemen-

tary school in San Mateo had a drinking fountain with over 1,900 ppb of lead, and a school in San Francisco had a water fountain with 900 ppb, according to the California Public Interest Research Group (CALPIRG).

The fifth graders who spoke at the school board meeting go to Colonial Acres where all of the water fixtures are not over 1 ppb, but the students said they want that level for all of the schools in the district.

The district replaced any fixtures that had lead levels not just above 15 ppb, but corrected anything above 5 ppb, said Doug Marr, the district's director of maintenance and operations.

"We went a step further and did repairs on anything above 5 ppb, to bring it as close to 1 ppb

as we can," Marr said.

A state bond helps pay to remediate anything with a level above 15 ppb, but getting it below the 5 ppb is a cost to the school district which is trying to do as much as it can with the money available, Marr said.

"I think we're ahead of the curve with the goal of getting it down to non-detected or 1 ppb as we can," Marr said. "My kids go to district schools, so I want the water as safe as everyone else."

Marr said the school district has been working with Stanford and CALPIRG and has been installing new water bottle fillers at the schools.

The California Public Interest Research Group has been following the lead levels in water.

"The state follows the 15 ppb

level, but doctors have said even that level is unacceptable," said CALPIRG spokeswoman Claudia Deeg. She pointed out that the American Academy of Pediatrics said there should be no more than 1 ppb in drinking water.

California state plumbing code stopped allowing lead in water fixtures since 2010, Deeg said.

CALPIRG is a citizen-funded organization that advocates for public safety for the common good, pointing out things like contaminants in food, overuse of drugs for people and animals, or unsanitary conditions in factory farms. It also works for fair voter registration, reducing waste and single-use plastics, building better and less wasteful transportation systems, and improving health care.

VOTED BEST SWIM CLASSES BY BAY AREA PARENTS & PARENTS/PRESS

Enroll With Us Anytime!

- Indoor Swim during Fall & Winter
- Ages 6 Months thru Adult
- Ideal for Children with Learning Differences

We Have Taught Over 50,000 Individuals To Swim!

(510) 331-6610

4621 JAMES AVE. • CASTRO VALLEY • (OFF REDWOOD ROAD)

WWW.PATTISWIMSCHOOL.COM

SAVE UP TO 60% OFF

3 DAYS ONLY

EVERYTHING IS ON SALE!

- SOFAS
- SECTIONALS
- SLEEPERS
- CHAIRS
- RECLINERS
- WALL UNITS
- DINING
- BEDROOMS
- BEDDING
- ACCESSORIES

"Make your house a Dupree's home"

Dupree's FURNITURE

EASY LAYAWAY & FINANCING AVAILABLE

47 Years Experience

1900 E. 14th St. • San Leandro

357-3000

www.Duprees-Furniture.com

OPEN TUESDAY-FRIDAY 10AM-6PM • SATURDAY 10AM-5PM • CLOSED SUNDAY & MONDAY

Eight Elementary Schools, Unlimited Opportunities.

NOW ENROLLING

WWW.SLUSD.US

Wilson Elementary Class of 2005

HEALTH & FITNESS

3 Ways Millennials Can Help Baby Boomer Parents Get Fit

By Jaime Brenkus
Special to the Times

Aging baby boomers who neglect their health and fitness don't just harm themselves. Their lifestyles also affect their adult children, who eventually could end up caring for them – both financially and physically – as their health declines.

Of course, that's not the only reason those adult children might feel concerned. They also like having mom and dad around, and want that to continue for years to come.

So they have a vested interest in encouraging their parents to get fit and stay fit.

But young adults who cringe at their parents' eating and exercise habits may be reluctant to broach the subject.

How can they start such a conversation? And what are some suggestions for healthy living their parents are likely to put into practice?

One thing that might be tempting, but probably won't work, is a harsh lecture.

You don't need to give them a sermon, but you should remind them of how important exercise and healthy eating are, and how much you care about having them around for you and for the grandchildren.

There is plenty of nutrition and exercise advice that can help older people. Here are a few starter tips:

- Encourage them to drink more water. This may sound basic, but not everyone drinks as much water as they should – even though this is a healthy habit that's simple to accomplish.

A CDC study, for example, revealed that 43 percent of adults drink fewer than four cups of water a day and seven percent don't drink any glasses of water at all. Presumably, they get their fluids from other beverages that have water in them.

Baby boomers grew up drinking a lot of soda and Kool-Aid. Later, they graduated to coffee and alcoholic beverages. Many of them have adapted to today's bottled-wa-

ter culture, but for some those old habits may die hard and water isn't always their first choice when thirst beckons.

- Recommend they try strength training. The most effective way to increase metabolism and to help reverse the aging process is stimulating muscles by lifting challenging weights to increase lean muscle mass. More strength will make daily life easier for them giving them better balance so they will be less likely to fall. It also can strengthen the heart, and it makes them look and feel younger.

- Make sure they socialize. This isn't directly related to exercise, but studies have shown that people who are active socially are healthier and live longer lives. If socializ-



ing is combined with exercise (playing tennis, taking regular walks with a friend), then that's all the better.

Helping your parents adopt a healthier lifestyle is about encouraging them to change

their habits for eating, cooking, shopping and fitness. And even more importantly, it's about helping them to change their thinking habits.

Jaime Brenkus is a fitness coach for Evergreen Wellness.



How to Control your pH Level and Feminine Health

The vagina is a delicate ecosystem that must be maintained at a normal pH of 3.8-4.5. Everyday events like your period, sex, soaps, certain medications and the water in a douche can all change the vagina's natural balance because those elements have a pH of 7.5 or 8. When vaginal pH is disrupted, you might experience burning, itching or an unpleasant odor.

What to do? OB/GYN Dr. Mary Jane Minkin, Clinical Professor in the Department of Obstetrics, Gynecology and Reproductive Sciences at the Yale University School of Medicine, offers the following tips to maintain good vaginal health on a daily basis:

1) Eat and drink for health: Drink plenty of water and cranberry juice, as it's good for the bladder, and the acidity helps balance pH levels to relieve UTI symptoms. Foods high in sugar can increase the risk of yeast infections. So, avoid processed foods, alcohol and sugary drinks, and eat more fruits, veggies and whole grains to help prevent yeast issues and UTIs.

2) Avoid irritating wipes and soaps. Most vaginal odor is not the result of poor hygiene. The secret is to keep the vaginal pH balanced, instead of just masking the problem with scented soaps, fragrance sprays, irritating wipes and pads that can be harmful to delicate tissue. Over-the-counter RepHresh Gel keeps the pH balanced and eliminates odor for up to three days. Lingering bacteria can cause odor too. If you douche, remember to balance pH immediately after with RepHresh, or use their Clean Balance kit that includes a cleaning solution and pH balancer all-in-one.

3) Swap clothes after that sweat session. Yeast infections are common for avid exercisers because yeast tends to grow in warm, moist areas. Change out of wet bathing suits and tight

exercise clothing right after that run, bike or hike and if you douche afterwards, remember it can actually destroy the healthy pH balance. That's why it's important to restore normal pH right after.

4) Be aware of BV. Symptoms of a yeast infection can include odorless and sometimes thick discharge, itching and burning. Many women think they have a yeast infection when they have bacterial vaginosis (BV), an increase of "bad" bacteria, usually caused by unbalanced pH. Symptoms of BV are often similar, but the discharge produced generally has an unpleasant odor. If you aren't sure whether you have BV or a yeast infection, see your doctor for a proper diagnosis and solution.

5) Focus on the right probiotic. While there are yogurts that add probiotics to promote digestive health and immunity, no yogurts are shown to maintain vaginal health. RepHresh Pro-B is different from other probiotics, lactobacillus and acidophilus products because it is clinically shown to provide healthy probiotic lactobacillus that work to balance yeast and bacteria. With one capsule taken daily, you can help maintain healthy vaginal flora.

By following a few simple tips, you can stay healthy, feel confident, and decrease the risk of issues like unpleasant odor or itch.

- Brandpoint

On Sale in February!
American Heart Month!

NORDIC NATURALS

25% OFF

HEALTH UNLIMITED
— NATURAL FOODS —
San Leandro
182 Pelton Center
(510) 483-3630

Castro Valley
3446 Village Dr.
(510) 581-0220

Since 1969

Your Ad Could Be



Here!

Advertise Your Wellness Business on our Health and Fitness Page in the San Leandro Times.

To place an ad call

Claudette Morrison: 510-912-1490

Linda Nakhai: 510-915-1513

Mary Florence: 510-861-3270

www.sanleandrotimes.com

REAL ESTATE GALLERY



REAL ESTATE REALITY

By Carl Medford, CRS
Special to the Times

GUEST COMMENTARY



Curb Appeal Is Back

While the recent drought caused significant problems across California, it had at least one positive for local home sellers: since it was not recommended to water lawns or landscaping, many homeowners let their flora wither and, in many cases, die.

It was therefore not uncommon to spot listings featuring brown lawns and minimal landscaping. Some sellers went so far as to plant signs on their front lawn stating, "Brown is the new green."

Even with the crisis firmly behind us, remnants linger as many homes still feature patchwork lawns and spotty vegetation. While we might have used the "drought" excuse in the past to justify less-than-

stellar curb appeal, times are a'changin and curb appeal has returned to buyer's expectations.

With the height of the listing season still a few months away, sellers still have time to whip their front yards into shape.

Start by walking across the street to get a "buyer's eye" view of the front yard. Ideally, your yard should be amongst the best on the block.

Develop a list of things that need to be done and set a timeline for each activity. Landscaping takes time to develop, so get started now if you hope to list in a few months.

If your home has a lawn that needs some love, visit local nurseries to get treatment recommendations or hire a lawn expert to get things back in shape. You might need to completely replace your lawn if it is beyond repair.

Trim bushes, weed flower beds, replace bender boards, ensure automatic irrigation is in good shape, plant new bushes and flowers as required and spread mulch around the greenery for a bright, fresh look.

Another option to consider is replacing the traditional lawn and greenery with drought-resistant low maintenance landscaping and hardscape.

With the vegetation under control, turn to the structure itself. The front and garage doors, shutters and trim should be in good shape and freshly painted as required. You might consider replacing doors to upgrade the home's appearance.

Power wash the home to remove dirt, spider webs and more. If your walkways and driveway are in poor condition, upgrades may be in order to enhance overall appearances. If your mailbox has seen better days, consider replacing.

With only one chance to make a first impression, do everything necessary to ensure that potential buyers are not turned off before they get through the front door.

Carl Medford is a licensed Realtor with Keller Williams Realty and a licensed general contractor. This article is sponsored by the Central County Marketing Association.

275 Bellevue Drive • San Leandro



Updated and Charming! Open Saturday & Sunday 1:00-4:00

This single-level two-Bedroom, 1-Bath beauty would be very easy to live in. Conveniently located close to BART and several other forms of commuter transportation. Some of the many amenities include Fresh Interior & Exterior Paint, Updated kitchen, Updated windows, Refinished hardwood floors, Gas Insert Fireplace, Newer Roof, Seismically Upgraded Foundation and more. Low maintenance landscaping that still allows for vegetable gardening and enjoying time on the expansive rear deck. Offered at \$624,000.

For more information, contact Michelle R. Miller, Associate Broker, of Compass at 510-701-3442. BRE# 01012751



COMPASS

Not Too Late to Prune Roses

By Buzz Bertolero
Special to the Times

Q I've just pruned my roses. There was lots of new growth, so I just thinned them a bit and removed the deadwood. Should they be sprayed with a dormant spray? I've had black spot in previous years and some mildew, so I'd like to prevent them this year.

A It's not too late to prune roses. The only adverse effect from pruning late is you'll delay flowering. Based on what you did, I'm not sure that this will be an issue.

It is too late to apply dormant spray. Applied now, it would

more than likely burn the foliage. The dormant spray cleans up overwintering spores but does not affect preventing the diseases later in the year.

It would help if you cleaned up any of the debris that has accumulated under the bushes. Rust, mildew, and black spot are all types of air-borne fungus that infects roses when moisture remains on the foliage after the sunset.

They're all serious problems when the rainy season extends into late April. You'll need to be pro-active with your fungicide to keep the rose leaves pristine. While there are many fungicides available to control these problems, none of them will eradicate the diseases.



Fungicides must be applied prior to the disease showing up to be effective in preventing the problem(s) from occurring. We usually end up reacting to it after the fact as you're too late when you see the diseases. The infection occurred 10 to 14 days earlier.

Bayer Advanced Rose And Flower Care is a unique solution to preventing rose diseases. It's the only systemic, fungicide available that gives six-weeks control per application for rust, black spot, and mildew on roses as well as many other plants. It also controls aphids and many other insects along with feeding your

bushes.

This three-in-one product is applied to the roots in a bucket of water. I'd use it when the forecast indicates wet weather is ahead. One application should be sufficient to keep your roses disease-free with a minimal amount of effort.

Buzz Bertolero is an Advance California Certified Nursery Professional. The Dirt Gardener's website is www.dirtgardener.com and questions can be sent by email to buzz@dirtgardener.com or on Facebook at [Facebook.com/Buzz.Bertolero](https://www.facebook.com/Buzz.Bertolero)



Village Properties
& ASSOCIATES
PROPERTY
MANAGEMENT &
REAL ESTATE SALES
Sam & Jessica
Medina
510.481.8400

"Your Neighbor & Realtor!"



Selling
Your Home for
the Highest
Dollar!



List With Me for Unsurpassed Service

510-821-1806

tasrealty@gmail.com

www.taskeenfatehdin.com

Taskeen (Tas) Fatehdin,
Broker

BRE # 01410733

NMLS ID #388414



"Integrity, Experience, Results"

Alliance Bay Realty

Nasser Haghighi
510-415-1612

"San Leandro Resident Since 1976"
nasserhag@att.net



BRE# 01221281

Sales ~ Property Management ~ Leasing

SINCE 1923

DEADRICH
REAL ESTATE

581 E. 14th St. • San Leandro • 632-1234
www.deadrch.com CBRE #00360465

Robert Jones and Associates

Selling San Leandro Since 1964 • www.RobertJonesandAssociates.com

Matt knows the market and loves what he does!



We offer you
experience and
enthusiasm!!

Selling San Leandro
Since 1964

142 JOAQUIN AVE. • SAN LEANDRO • 357-0120



Antonio & Alexia Cardenas
"Realtors in Motion"
Ballroom Dancers

"The Agents with the Visual Tours"
(510) 326-4263

Visit us @
www.ListedbyAntonio.com
R.E. eBroker Inc. • A Virtual Real Estate Brokerage



Create Your Own Low Maintenance Relaxation Garden

By Melinda Myers
Special to the Times

Create an outdoor space to relax and recharge. Transform a corner of your landscape, deck or balcony into your own escape from everyday deadlines and stress.

Use decorative fencing, sheer curtains or plantings to define the space and create a bit of privacy. An outdoor carpet, steppers or groundcover can also help define the space and create added comfort.

Provide a bit of protection from the blazing hot sun with a shade tree, pergola, umbrella or retractable awning. Deciduous trees and vines add shade during hot summer months, but let the warm sunlight shine through during the cooler months of the year.

Reduce maintenance by growing plants suited to your

climate and growing conditions. Use fewer varieties and more of each to provide unity while reducing maintenance. Include permanent plantings of low maintenance trees, shrubs and perennials. Further reduce maintenance by selecting All-America Selections (AAS) winning plants (all-americaelections.org) that have been trialed across the US and Canada and selected for their performance in home gardens and containers.

Select varieties known for being low maintenance. Inter-specific Supra Pink and Jolt dianthus are both such plants. Their showy flowers brighten the garden all summer long despite the heat and with no deadheading.

Add some therapeutic fragrance to your space by growing a pot or patch of

Lavender lady, an English lavender. Brush your hand over the foliage and flowers to enjoy its relaxing fragrance. This compact variety flowers just 90 days from sowing and is hardy in zones 5 to 9.

Perfume the air with blue Evening Scentsation petunia. Perfect for containers and hanging baskets, its fragrance peaks during the evening hours. Set a container of compact Deep Purple nicotiana near your chair or entryway for a fragrant greeting in the evening.

Get a boost of color and health benefits by inviting birds and butterflies into your sanctuary. Being in nature lowers your blood pressure and improves your mood and adding bird watching to the mix increases these benefits.

Plant Tip Top Rose nasturtium to bring in the hum-

mingbirds and butterflies. This compact plant boasts showy rose-colored flowers that bloom all season long. Pluck a few of the edible leaves and flowers to enjoy in your salad.

Summer Jewel Salvias include red, white, lavender and pink flowered wind and rain tolerant beauties. You'll enjoy the butterflies and hummingbirds visiting the flowers and goldfinches feasting on the seeds.

Extend your enjoyment into the evening with some night lighting. Drape a string of lights over a pergola, arbor or tree. Lead the way to your retreat with some solar powered path lighting. Within the space, light a few candles or lanterns for more intimate lighting.

Brighten the night garden with a few flowers that shine during the darker hours. Gypsy White baby's breath is a non-in-



As its name implies, Evening Scentsation petunia fills gardens and relaxation areas with its aroma especially in the evening hours.

vasive species and has better branching and heat tolerance, making it an attractive low maintenance option.

Mega Bloom Polka Dot vinca's bright white flowers are a standout in the garden. Its pure white petals with bright pink center provide a nighttime glow as well as daytime interest.

Be sure to include a comfortable chair, hammock or glider to relax into the space. Add the soothing sound of water to help mask any unwanted noise.

Then grab a good book, your favorite beverage and escape to your own backyard retreat. You'll leave the space refreshed and ready to embrace

and enjoy whatever comes next.

Melinda Myers has written more than 20 gardening books, including *Small Space Gardening*. She hosts *The Great Courses* "How to Grow Anything" gardening DVD series and the nationally syndicated *Melinda's Garden Moment* TV & radio segments. Myers is a columnist and contributing editor for *Birds & Blooms* magazine and was commissioned by AAS for her expertise to write this article. Myers' web site is www.melindamyers.com.

Thin Branches of Weepy Cherry

By Buzz Bertolero
Special to the Times

Q I have a weeping cherry in a container. How far back should I cut the branches? Should this be done now or after it has flowered in the spring?

A Flowering trees are usually pruned after they finish flowering. You can undoubtedly prune it now, but you only reduce the color show you waited all year for.

How far back you prune the branches on a flowering cherry is a judgment call on your part. It could be several inches or feet. The bottom of the branches can be uninformed,

or you can stagger the lengths. It depends on how the plant is being viewed.

I would remove any dead wood, and you might thin out branches that very close to one another. Another thing I suggest is to take some before

and after pictures with your smartphone or digital camera. It's a valuable resource next year when it comes time to prune again.

Buzz Bertolero is an Advance California Certified Nursery Professional. The Dirt Gar-

dener's website is www.dirtgardener.com and questions can be sent by email to buzz@dirtgardener.com or on Facebook at [Facebook.com/Buzz.Bertolero](https://www.facebook.com/Buzz.Bertolero)



RECENT HOME SALES

Castro Valley

4106 David Street 94546: \$620,000 3 BD - 1,059 SF - 1948
4037 Berdina Road 94546: \$950,000 3 BD - 1,560 SF - 1972
TOTAL SALES: 2
LOWEST AMOUNT: \$620,000 MEDIAN AMOUNT: \$785,000
HIGHEST AMOUNT: \$950,000 AVERAGE AMOUNT: \$785,000

San Leandro

24 Dutton Avenue 94577: \$585,000 2 BD - 994 SF - 1924
16263 Miramar Place 94578: \$680,000 3 BD - 1,525 SF - 1985
862 Barri Drive 94578: \$738,000 3 BD - 1,480 SF - 1955
TOTAL SALES: 3
LOWEST AMOUNT: \$585,000 MEDIAN AMOUNT: \$600,000
HIGHEST AMOUNT: \$735,000 AVERAGE AMOUNT: \$667,666

San Lorenzo

655 Via Manzanitas 94580: \$635,000 3 BD - 1,134 SF - 1947
1909 Keller Avenue 94580: \$705,000 3 BD - 1,252 SF - 1955
TOTAL SALES: 2
LOWEST AMOUNT: \$635,000 MEDIAN AMOUNT: \$670,000
HIGHEST AMOUNT: \$705,000 AVERAGE AMOUNT: \$670,000



Source: www.monarch-butterflyfly.com

Feeding monarchs

The monarch caterpillar (the larvae stage of the monarch butterfly) feeds only on the leaves of milkweed plants.

From these it gains all the nutrition needed to change into the adult form. The adult monarch consumes nectar from flowers, minerals from mud puddles and liquids from fruits. To attract them to your backyard, leave out slices of banana, oranges or watermelon, and plant a variety of flowering plants. — B. Weaver

RINETTI & Co. REALTORS

FAMILY OWNED & OPERATED,
SELLING PROPERTY SINCE 1970

SERVICES PROVIDED:

- REPRESENTING BUYERS & SELLERS
- INTERIOR DESIGN & HOME STAGING
- PROJECT MANAGEMENT
- INVESTMENT PLANNING

WWW.RINETTI.CO.COM
(510) 568-6171
CA DRE #01461822



OPEN HOMES

SAT. & SUN.
FEB. 29 & MAR. 1

CITY	SAT	SUN	ADDRESS	PRICE	BDR./BA.	REALTOR	AGENT	PHONE
A	1-4	1-4	275 Belleview Dr.	\$624,000	2/1	Compass RE	Michelle Miller	510-701-3442
C	—	1-4	19135 Schuster Ave.	\$859,000	3/2.5	Alliance Realty	Mike Brisco	510-551-8583
O	—	1-4	5277 Manila Ave.	\$980,000	3/1	Re/Max Accord RE	Lovewell Team	510-351-5555
C	1-4	1-4	4886 Proctor Rd.	\$1,449,000	3/2	Re/Max Accord RE	Leslie Peterson	510-697-1209
F	—	1-4	1235 Deer Rd.	N/A	2/1	J. Rockcliff RE	Kristy Peixoto	925-251-2536

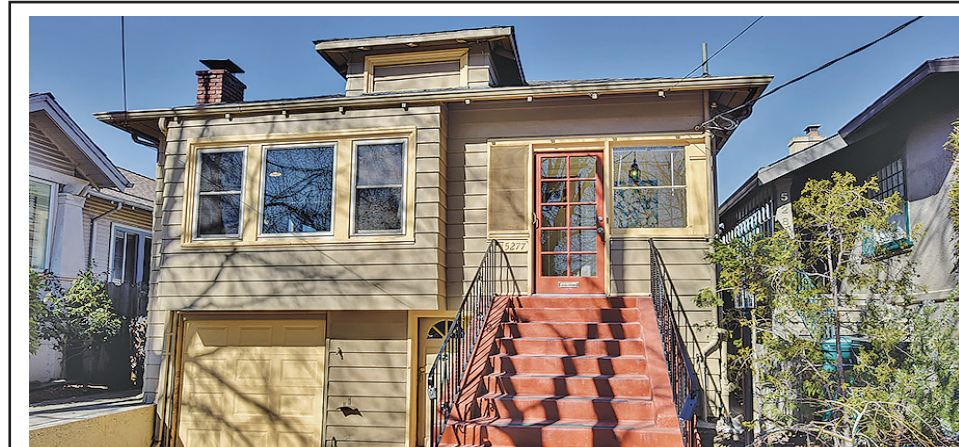
One-Line Open Home Listings run Wednesdays in the Castro Valley Forum (22,500 circ.) and Thursdays in the San Leandro Times (38,500 circ.) for \$25.
For more information and a listing form, Call 614-1558. DEADLINE: TUESDAY AT NOON.

CITY GUIDE

A = SAN LEANDRO • B = BERKELEY • C = CASTRO VALLEY • D = DUBLIN • F = FREMONT • H = HAYWARD
L = LIVERMORE • M = MODESTO • O = OAKLAND • SLZ = SAN LORENZO • W = WALNUT CREEK • Z = ALAMEDA



All real estate advertised in the San Leandro Times is subject to the Federal Fair Housing Act, which makes it illegal to advertise any preference, limitation, or discrimination because of race, color, religion, sex, handicap, marital status, national origin, or intention to make any such preference, limitation or discrimination. The San Leandro Times will not knowingly accept any advertisement for real estate that is in violation of the law. All persons are hereby informed that all dwellings advertised are available on an equal opportunity basis.



5277 Manila Drive • Oakland • \$980,000

Come see this darling bungalow, with loads of period details, in the fantastic Rockridge area. The upstairs features a living room, dining room, spacious kitchen, 2 bedrooms, updated bathroom & bonus room off of the kitchen. The downstairs basement has a laundry room, bonus bathroom, and 2 bonus rooms alongside the deep tandem garage. The home also features built-in cabinets, freshly painted interior, new laminate floors downstairs, and refinished hardwood floors upstairs. Enjoy the cozy deck that overlooks the lush, private backyard with citrus trees and other well-established landscaping. Within walking distance to BART, wonderful shops and restaurants - you will love the location! Open houses Sundays 3/1 and 3/8 from 1-4pm. For more information contact The Lovewell Team, of Re/Max Accord, at (510)351-5555.



Update: Englander Pub Closing this Week

The Englander Pub in downtown San Leandro will close this week with a going-away party on Saturday.

In the story last week on the Parrott Street pub ("Englander to Close Next Week," Feb. 20, 2020) the property owner couldn't be reached before the newspaper went to press.

But since then, property owner Rob Scribner said that the current business owners of The

Englander just didn't renew their lease when it was up on Dec. 31.

The business owners had been trying to sell the business. Scribner said they had a potential buyer about two years ago, but it was someone with no restaurant experiences.

The pub has been a downtown fixture and meeting place of many local civic clubs for the past 25 years.

The San Leandro band Stereo Freakout will play the going away party on Saturday at 2 p.m.
— By Jim Knowles

Become a Hayward Softball Umpire

The Hayward Softball Umpires Association is recruiting year-round to work paid Hayward Area Recreation and Park District (HARD) softball games – men's, women's and co-ed slow pitch. The umpires association trains all age groups. It's a great way to earn some extra money. For more information, call the association's educational director at 510-586-8592 between 9 a.m. and 9 p.m.

DEERCREEK

Traditional Services
at a Fraction
of the Cost
Cremation Services

JAY SPENCER

40+ Years Experience

Castro Valley
Dublin

510-317-7890
FD 1505 FDK 651

Serving Families In Our Community
With Compassion and Service Excellence



San Leandro Funeral Home

407 Estudillo Ave.,
San Leandro, CA 94577
510.483.5300
www.sanleandro-fh.com

(Formerly Guerrero Mortuary)
Serving All Faiths

- Large Chapel
- Reception Room & Kitchenette



FD 442

SANTOS-ROBINSON MORTUARY

— Supporting Local Churches and Families for Over 80 Years —

FUNERAL AND CREMATION
PROFESSIONALS

Traditional Services • Cremation Options
Pre-Arrangements

Serving All Faiths and Cultures

510-483-0123

www.santos-robinson.com
CALIC. FD-81

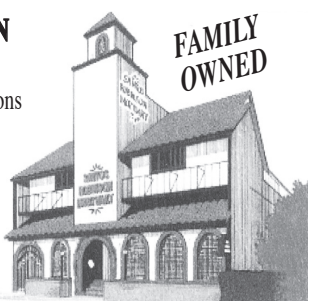


PHOTO BY RUSS WRIGHT

Stereo Freakout to Play Englander Farewell Party

Stereo Freakout – George Rider, Dave Jones, Jym Murry, Mike Henika and Nick Rousto – will play at 2 p.m. this Saturday at the farewell party for The Englander, 101 Parrott St. Shark Punch and Altered Egos are also on the bill.

HARD to Host Meetings On Castro Valley Parks

The Hayward Area Recreation and Park District is holding two meetings to gather feedback from residents about Castro Valley parks and facilities. The first meeting will be held on Saturday, Feb. 29, from 10:30 a.m. to noon at the Castro Valley Library, 3600 Norbridge Ave. in Castro Valley; and the second meeting will be held on Wednesday, March 4, from 6:30 to 8 p.m. at the Kenneth C. Aitken Community Center, 18988 Lake Chabot Road,

Castro Valley. The meetings will have the same information so that residents may choose to attend one at their convenience.

HARD Capital Bond staff along with the project consultants will present the program which will include several hands-on interactive tables to share information and to obtain opinions and ideas for facility improvements. For more information about HARD and the capital bond projects, visit www.HaywardRec.org.

Pets of the Week



Harry Pawter

The Pets of the Week at the Hayward Animal Shelter, 16 Barnes Court in Hayward, are Harry Pawter the bunny and Mr. Badger the bunny.

Harry Pawter is a friendly, silly bunny who is sure to enchant you. He's quite laid-back and likes to relax and take it easy.



Mr. Badger

He loves snacking on cilantro, timothy hay and an occasional piece of fruit.

Mr. Badger, named for his handsome badger-like coloring, is a sweet bunny who is good with handling. He loves lounging on his bed and snacking on greens, hay and an occasional piece of apple.

For more information on Harry Pawter or Mr. Badger, call the Hayward Animal Shelter at 510-293-7200.

Eden Hosting Cancer Support Yoga Workshop this Evening

Eden Medical Center, 20101 Lake Chabot Road in Castro Valley, is offering quarterly cancer workshops. The Gentle Restorative Yoga workshop will be held today (Thursday) from 5:30 to 7:30 p.m. Learn how breathing and gentle movements promote healing and restores the body. It is also one of the best

ways to fight fatigue and restore strength and balance. If you are going through cancer treatments, are on the road to recovery, or are a caregiver, this class is for you. Madelyn Kimball is a certified yoga trainer and will share her knowledge in this free workshop. Registration is encouraged by calling 925-933-0107.

LOCAL DEATHS

TIMES OBITUARIES may be submitted online at ebpublishing.com, emailed to obits@ebpublishing.com or faxed to 510-483-4209. Please include your phone number. For further assistance, call 510-614-1555.

SARA L. ENNOR LAWYER

- Wills & Trusts
- Benefits, ERISA
- QDROs

510-633-9985

Wayne D. Martinelli

Wayne D. Martinelli, 74, passed away peacefully at his home in Pleasanton surrounded by his family on Monday, February 17, 2020 after a courageous battle with cancer.

He was born to Dan and Frances Martinelli on August 11, 1945. He grew up in San Leandro and graduated from San Leandro High in 1965.

Wayne was the proud owner of Dan Martinelli Poultry Co., a family business founded by his beloved father in 1946. He began working with his father at the age of 15 and worked diligently until his retirement in 2017. He was the longest serving member of the UFCW Butchers Union, 52 years.

Wayne was an avid golfer and enjoyed spending time with friends and family.

He touched many lives with his kind and generous spirit and will be greatly missed by all who knew him. He was a beloved father, grandfather, brother, and friend.

Wayne is preceded in death by his parents Dan and Frances Martinelli, and his son Brent Martinelli.

He is survived by his loving daughter Stacy Phelps of Turlock, CA, his two beautiful granddaughters, Courtney and Ashleigh Phelps, his sister Jeanette Parks, and niece and nephew, Wendy and Scott Parks.

Friends and family are invited to a visitation on Wednesday, February 26, 2020 from 4 p.m. - 8 p.m. and a funeral service on Thursday, February 27, 2020 at 10 a.m. at Graham-Hitch Mortuary, 4167 First St. in Pleasanton. Burial to follow at Memory Gardens Cemetery, 3873 East Ave., Livermore.



Fortunato ("Fordie") Joseph Ramirez

July 28, 1949 - February 1, 2020

It is with great sadness that we announce his sudden passing on February 1, 2020. He was 70 years old.

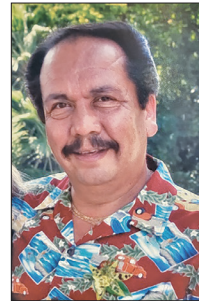
He will be lovingly remembered and desperately missed by his Mother, Lucy Ramirez, his Daughter, Stacey Gregg, Son-in-Law, Donny Gregg (Grandchildren Tiersa Gregg and D. J. Gregg), brother Anthony Ramirez (niece, Analisa Ramirez and nephew, AJ Ramirez) and his long-time companion and fiancée, Dot Jessup.

He was predeceased in death by his wife, Pamela Ramirez in 1989. He was a resident of Washington Manor in San Leandro.

Fordie was born on July 28, 1949 in Denver, Colorado to Lucy and Ford Ramirez. His family relocated to California in 1956 in order to take advantage of better employment opportunities. Fordie graduated from Marina High School in 1967. Fordie worked 50 years as a Union Stagehand (I.A.T.S.E., Local No. 107, Oakland, CA). He worked at the Oakland Coliseum for most of those years, including working for Oakland A's Baseball, Oakland Raider's and the Golden State Warriors.

Fordie cherished his daily visits with his Mom, he enjoyed staying at his Campsite in Avery and riding his Harley. He also enjoyed working in his garden. He was family oriented and enjoyed spending his time with his longtime fiancée Dot Jessup.

At Fordie's request, there will be no services. He will be interred at Lone Tree Cemetery in Hayward. Memorial donations should be made to Tony LaRussa's Animal Rescue Foundation (ARF), Walnut Creek.



OPINION

LETTERS to the EDITOR

Letters must include the writer's name, address and phone number, and **must be under 300 words**. We reserve the right to edit as necessary. E-mail letters to: letters@ebpublishing.com or fax to: 510-483-4209, or send by mail to: The Editor, San Leandro Times, 2060 Washington Ave., San Leandro, CA 94577.

'Continue the Progress'

Editor:

After not investing in our local public schools for nearly 40 years, we as a community began to make significant investments in our schools two decades ago. This has helped make our community safer and more prosperous by attracting and retaining families in San Leandro.

All San Leandrans should take pride in what has been accomplished. We have built a new elementary school, performing arts center, academic wings at our middle schools, and the Fred T. Korematsu campus at San Leandro High.

All of our schools meet modern seismic safety standards and classrooms have been modernized, even at those schools over 100 years old.

Measure N will continue this progress. It specifically will complete the work identified in a comprehensive assessment of the facility needs of the district.

Projects include replacing the remaining portable classrooms with new, permanent classrooms, repairing deteriorating roofs, plumbing and electrical systems, upgrading campus security systems and replacing aging classroom windows with new, energy efficient windows.

Measure N will also enable our schools to receive matching funds for school construction and modernization from the state.

Please join me in voting Yes on Measure N.

—Stephen Cassidy

Former Mayor of San Leandro

'The Voracious School System'

Editor:

Just as I said, more bond measures for schools are on the ballot, three of them this time! How many times have we had to pony up more and more money for schools to fix that same roof which needs repair? I have heard this time and again as the excuse to dig into my pocket even more for the schools. Haven't we fixed that roof four times already with previous bonds, assessments, etc.?

San Leandro, we need to push back against the very voracious school system and not let them push us into poverty. If we look at what is being given to schools already, it is staggering. 40 percent of the state's budget goes to schools. Then we get to the county, the city, many other taxes, bonds. This is insanity.

No more raiding of our home values and bank accounts. Vote No on Measures 13, C, and N!

—Corey Anderson, San Leandro

'Renovate and Improve'

Editor:

We are writing to request community support for Measure N on the March 3 election ballot. We are parents that believe in quality public education for all children in San Leandro. In order for our district to receive matching funds from the state for much needed

facility improvements, we are required to raise money locally through bonds first.

Many of our school buildings are much older than buildings in other neighboring school districts and it is time that we invest in upgrading them.

We have the power to continue improving and rehabilitating many of our facilities through this school bond to ensure our students have access to the quality of education all students deserve.

Some of the necessary projects the Measure N Bond is funding will include building a new Engineering and Science Labs at the High School, replacing aging classroom portables with permanent buildings at all schools, and replacing old windows with energy efficient windows.

Yes, it costs money. Construction costs continue to increase exponentially every year and putting off the necessary renovations will only increase our tax burden in the future.

If we provide future San Leandro generations with better, more modern facilities, we are supporting an even more competitive environment for San Leandro students to focus their efforts on academic achievements. If we wish to keep and attract families in San Leandro that seek the best education for their children, we need to support Measure N to renovate and improve our schools.

We support our community, and invite you to strengthen it by supporting our schools. Vote Yes on Measure N for Schools!

—Lesley Feikert & Shane Washburn, Alan & Jill Stowe, Jill Raimondi, Chris Deng, Ruben Guerrero, Nicole Hunter-Maes, Heidi Klopfer, Jodie & John Marquez,

San Leandro

'A Staggering Debt'

Editor:

As an architect who spent my career assisting school districts around the Bay with facility improvements and spent a couple of years on the San Leandro Bond Oversight Committee, I must ask all of you, especially those who display those ubiquitous Measure N signs, to think about what you are happy to promote. Knowing more should give you pause.

The San Leandro School Board is asking those of us who pay property taxes here to take on a staggering debt, for improvements that are likely needed. But if passed, the debt will be half a billion dollars! That is \$58,000 per pupil!

Unfortunately, the backers don't want you reminded that they took the roughly \$200,000 we provided the District before and through the use of CABs (Capital Appreciation Bonds) caused that debt to expand to over \$300,000. CABs are like a loan against the expected bond funds but with an extremely high interest rate.

Because the school district could not be patient, we now owe far more than we voted to provide them. We had no

control over it and the Oversight Committee was only informed of it after it occurred. California has since put a stop to this practice after some districts became insolvent.

They tell us there is more to do. They want more than the past two facilities bonds combined. So what are we getting for the money? Student achievement is mired in mediocrity. If you think your property value will be increased by Measure N, consider that it's not the quality of the facilities that improve property values, it's the quality of the education. By all metrics we've seen no appreciable improvement.

Don't we have a right to demand something for \$58,000 per student? Until they are accountable — tell them N means NO!

—Steve Parker, San Leandro

'Out-of-Control Spending'

Editor:

On March 3, all San Leandrans should vote no on Measure N and put an end to the local out-of-control spending.

The school district is just as incompetent as city government in managing its finances. During the last bond issue, the school district willingly sold high interest bonds in order to benefit from lower construction costs at the time. The interest costs quickly spiraled and totaled far more than any possible construction savings.

Basic math should be required to run local finances and clearly the school district can't be trusted to do this well.

The school district also claims that building new fancy buildings will help retain teachers. 10 percent of the high school alone is composed of students from Oakland and Hayward. The families of these kids from Oakland and Hayward don't pay property taxes, which lowers the average amount spent per San Leandro student.

Instead of frivolously spending on new buildings, the school district must learn to do more with less like the rest of us have to. Let's make San Leandro schools great again by doing the hard work and not wasting any more taxpayer money.

—Ricardo Trigueros, San Leandro

Apology to My Great Grandkids

Editor:

My concern is that when you get to my age after the turn of the century, the environmental effects of the current policies under the Trump administration — if allowed to continue — will be extremely devastating at that time, as he is undoing all the good environmental policies of the former administrations and enacting destructive policies instead.

Melting glaciers causing rising sea levels, severe droughts, extreme weather causing wildfires being more intense and longer burning, infectious diseases becoming much more common — it's not a world I would want to live in, nor to have my great grandchildren live in.

Soon it will be too late to shift course on this failing trajectory.

—Leonard Rogers, San Leandro

Another Bay Bridge

Editor:

Recently, a dedicated bus lane (Rep. Bonta), and a second BART tunnel,

(SF Chronicle), have been proposed to improve traffic flows into and out of SF. Neither of these ideas will really work.

A better idea is a second bridge with a second set of BART tracks leaving the West Oakland BART station onto the new bridge.

This would give us two new ways to cross the Bay at a cost far less than building a separate tunnel and a separate new bridge.

We clearly need a second bridge to cut these horrible commutes every day and to serve as a backup in case something catastrophic happens to the current bridge.

It is really short-sighted to pretend that we can run the SF area economy with a single bridge opened in 1937.

It's obvious where it should go.

Start by bringing the I-280 stub down King St. in SF, continue into the Bay and across to the 7th Street peninsula in Oakland hooking up with I-880 and I-980.

That land is owned by the Port of Oakland so there should be none of the usual problems associated with eminent domain.

It's time for both a second bridge and a second set of BART tracks. Let's get on with it.

—Don Siefkes, San Leandro

INQUIRING REPORTER

What's your favorite TV show?

— Asked at Estudillo Center on MacArthur Boulevard

A show called "A Million Little Things." It's about a group of friends who come together and support each other.

Sherry Silva
San Leandro



I liked Martin Lawrence's show. He had a sitcom and it was very funny.

Leesa Hogan
San Leandro



I like the History Channel's shows about how the country grew and who we are. I think it's interesting.

Gricel Lam
San Leandro



It would probably be "When Calls the Heart" on Hallmark. It's stories about a small town in the olden days, just nice, heartfelt stories. I'm a Hallmark girl. I like happy endings.

Virginia Gibbs
San Leandro



Without a doubt, "Seinfeld."

I still watch it. I've seen every show five times. I like George Costanza.

Mike Gilman
San Lorenzo



Quilt: On the way to Golden Gate Park

continued from front page

Mall in Washington, D.C. later that year. The quilt had grown to 1,920 panels, each eight feet by eight feet.

The Golden Gate Park display will feature the 1,920 most recently sewn panels.

"By highlighting the most recent panels, we hope to show the current state of HIV deaths and remind the nation of the ongoing and immediate toll that AIDS is taking today, nearly 40 years after this scourge began," said Jones.

The April showing will be the largest ever in San Francisco, where the quilt began, according to the National AIDS Memorial group. Outdoor displays of the quilt are rare, as it takes some 400 volunteers to lay it out and weather conditions can change rapidly, endangering the quilt. Volunteers are trained in emergency rain fold procedures that can protect the entire quilt in under 45 seconds if the weather changes.

Two of the quilt's co-founders, Mike Smith and Gert McMullin, also spoke at the event. They were joined by San Francisco Recreation and Parks Director Phil Ginzberg, who urged people to come see the quilt and reminded them that there were also 149 other events celebrating Golden Gate Park's 150 years.

"The face of HIV and AIDS has changed drastically since the pandemic devastated communities across the United States and San Francisco nearly 40 years ago," said John Cunningham, executive director of the National AIDS Memorial.

HIV, human immunodeficiency



PHOTO BY MIKE MCGUIRE
Panels from the AIDS Quilt are samples of the quilt in storage in San Leandro that will go on display in Golden Gate park in April.

ciency viruses (there are two varieties), is the underlying cause of AIDS, acquired immune deficiency syndrome.

The epidemic persists despite advances in treatment, according to the group. Some 1.1 million Americans are living with the disease, and more than 15,000 people died of AIDS-related complications in 2017 alone. While San Francisco recorded less than 200 new infections last year, a huge drop from the height of the epidemic, across the country some 38,000 received an HIV diagnosis in 2016, with half of those in the south and African-American gay and bisex-

ual men being the largest group among those with new diagnoses.

The quilt had originally been kept in San Francisco, but was the victim of rapidly escalating rents that caused it to move in 2001 to quarters in Atlanta that were both less expensive and closer to the shifting epicenter of the disease, according to media accounts at the time.

In November 2019, House Speaker Nancy Pelosi of San

Francisco, along with Representative John Lewis of Atlanta and Barbara Lee of Oakland, announced that the quilt would move from the NAMES Project Foundation in Atlanta to the Bay Area under the stewardship of the National AIDS Memorial.

The National AIDS Memorial Grove, in Golden Gate Park, became the nation's only federally-designated National AIDS Memorial in 1996.

Auditions for Matilda, the Musical in Newark

Stage 1 Theatre in Newark seeks boys and girls to perform this summer in the musical, *Matilda, the Musical*. Auditions will be held on Sunday and Monday, March 1 and March 2, from 6 to 9 p.m. at Newark Memorial High School. Sign up for auditions on the website: stage1theatre.org. Rehearsals will be held

at Newark Memorial High School on Saturdays and on two evenings a week beginning May 18. After June 15, rehearsals will be held four nights a week. Performances will run from July 11 to July 26. Casting four boys and four girls who appear to be between 7 and 12 years old. Looking for a diverse cast.

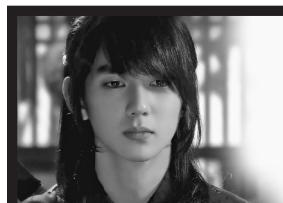
New Clients Special Rates



Schedule Your Appointment Today!
Certified Registered Tax Preparer
for Over 14 Years

Simply Taxes, LLC

Stacy Kinsella, owner 510-305-7505
www.simplytaxes101.com



WE BELIEVE: "It is the right of every pregnant woman to give birth... and the right of every child to be born."

A non-profit CRISIS PREGNANCY CENTER helping women to identify life-affirming resources and receive guidance in planning for her and her baby's future.

Birthright
Of San Lorenzo

- Free Pregnancy Tests
- Volunteer Opportunities
- Medical Referrals
- Housing Referrals
- Free Maternity/Baby Clothes (as available)
- Friendship for Life

24-HOUR HELPLINE
1-800-550-4900
1048 GRANT AVENUE • SAN LORENZO • 510-481-9677
Check us out at: www.birthrightofsanlorenzo.com
Text and Email: info@birthrightofsanlorenzo.com

Two San Leandro High Wrestlers Make State Meet

Two San Leandro High School wrestlers have qualified for the state tournament that will start today (Thursday) in Bakersfield.

Callan Ivy is a senior on the boys wrestling team, and Kendall Branchaud is a sophomore on the girls wrestling team, who has qualified for the state tourney for the second time.

Ivy is a four-year varsity wrestler. He just missed making the state tourney in his last two years, said Pirates wrestling

coach Yubini Barrera.

Last year, Ivy was eliminated by Sam Wade from Foothill High School who he beat for third place on Saturday to qualify for the state tournament, Barrera said.

Branchaud is a sophomore varsity wrestler who has qualified for the state tournament back-to-back years. Last year at 170 pounds and this year at 150 pounds, said Barrera. She had a 1-2 record at the state meet last year as a freshman.

Supervisor: Miley says housing key issue

continued from page 8

being business-oriented with higher-end housing. She has called for "an authentic Oakland neighborhood that preserves our cultural fabric and our diversity."

Miley was first elected to the Board of Supervisors in 2000, following 10 years as an Oakland city councilman.

Miley said this record in office gives four main reasons he thinks people should re-elect him.

He cited homelessness and housing, working to end illegal dumping, working to improve life for seniors, and his accessibility to constituents.

Miley was a big supporter of Measure A1, which has added 3,000 units of affordable housing to Alameda County since its passage in 2016.

Miley has pushed for a navigation center and safe car parking on county land, and worked to prevent displacement of people from their homes and rapidly rehousing people if they are displaced, he said.

Miley believes homeless encampments should be made safe, with basic sanitation and garbage disposal.

Miley has been active in fighting illegal dumping, which he sees as running down neighborhoods.

"In Oakland alone there are over 100 dumping hot spots, and in one three-month period we collected 300 tons of discarded items from them," he said.

Miley is one of the organizers of a statewide conference on illegal dumping being held April

22-23 in San Jose.

Miley has also been active in senior citizen concerns, having founded and still serving as president of United Seniors of Oakland and Alameda County.

"The senior tsunami is upon us," he said, referring to the many Baby Boomers now at retirement age, "and we have to be ready."

"People should be able to live and age in a dignified way, with respect," he said.

Miley has faced a number of controversies in his time in office.

These include appointing campaign contributors to the Castro Valley Municipal Advisory Committee, which makes recommendations about the unincorporated community to the Board of Supervisors.

He was one of two supervisors to oppose changes in the anti-terrorism Urban Shield police training program, accused of militarizing the police. The board majority voted last March to refocus the training toward disaster preparedness. The federal government pulled most of its funding for the program two days later, ending the county's involvement.

He also supported, and served on the board of the nonprofit Youth Uprising, which got a \$1 million county bailout in 2016 after it got involved in opening two failed charter schools. The county, and Miley, said they were unaware the group was in severe financial trouble before the bailout, according to press accounts at the time.

WOMEN IN BUSINESS

Appearing March 18 (CVF) and 19 (SLT)

Here is your chance to tell your career success in picture and story in the San Leandro Times. These special pages pay tribute to the women movers and shakers in our community. This section salutes top women employees and entrepreneurs through photo profiles.

Deadline: Friday, September 16, 2011

Format:

Approx. 75-100 words accompanied by a photo

BOTH PUBLICATIONS

Cost:
\$235

San Leandro
Times only
\$165

Castro Valley
Forum only
\$135



For more information call:

Claudette Morrison
614-1559

Linda Nakhai
915-1513

Mary Florence
981-3270

Job Opportunity —

ADVERTISING SALES REPRESENTATIVE

East Bay Publishing, the publisher of the San Leandro Times & Castro Valley Forum newspapers, is seeking a highly motivated, career-oriented account executive. Experienced and college degree preferred.

Please email resume to:
howardm@ebpublishing.com
or fax to 510-483-4209.

