

Concert

# Ciclo de 3M>>>

sentido horário  
MIXOLÍDIO

sem armadura de clave

C7(9)(11)(13)

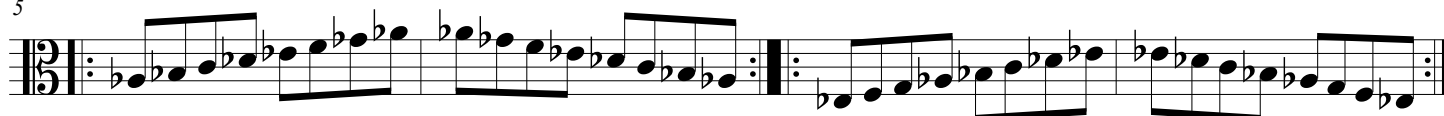
E7(9)(11)(13)



A $\flat$ 7(9)(11)(13)

E $\flat$ 7(9)(11)(13)

5



G7(9)(11)(13)

B7(9)(11)(13)

9



F#7(9)(11)(13)

B $\flat$ 7(9)(11)(13)

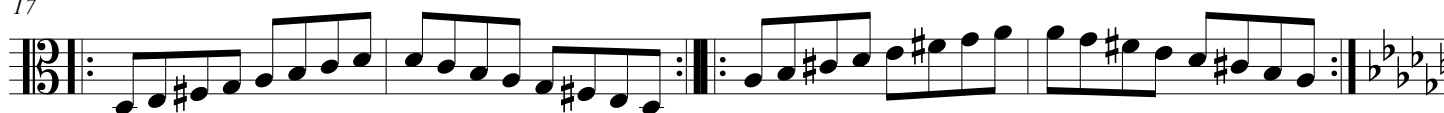
13



D7(9)(11)(13)

A7(9)(11)(13)

17



D $\flat$ 7(9)(11)(13)

F7(9)(11)(13)

21



# <<<<Ciclo de 6m

sentido anti-horário