

PAYETTE NF SIGNS

RECENT INVENTORY, INSTALLATION AND
REPAIR AND FUTURE PLANS



This presentation updates the PFC on sign inventory and improvements implemented by the Payette National Forest, including:

- Campground Signs

- Trail Signs

 - Trail Names

 - Trail Mileage Markers

- Road Signs

 - Road Numbers

 - Road Names

 - Directional Signs

What are plans for the next couple of years?

Who to call for information or to report sign needs?

Another navigation tool for the public to use



Recent priorities for sign inventory, installation, and repair:

- Route markers for roads open on the Motor Vehicle Use Map. Spent several seasons getting these markers installed and/or replaced.
- When DF Development bought large tracts of land, installed portal signs on roads so public would know when they were on National Forest System lands
- Shifted a couple of years ago to guide sign inventory and installation while spending approximately 20% of project time on maintaining the route markers.

Shout out to:

- Kort Anderson and Mike Vogel - Contractors under the ACES program that hires experienced retirees. Excellent resource to mentor new employees and apply their skills. They have done the bulk of the inventory and installation.
- Fire prevention technicians and YCC crew working on portal signs.
- Recreation and engineering staff inventory, ordering and installing signs.



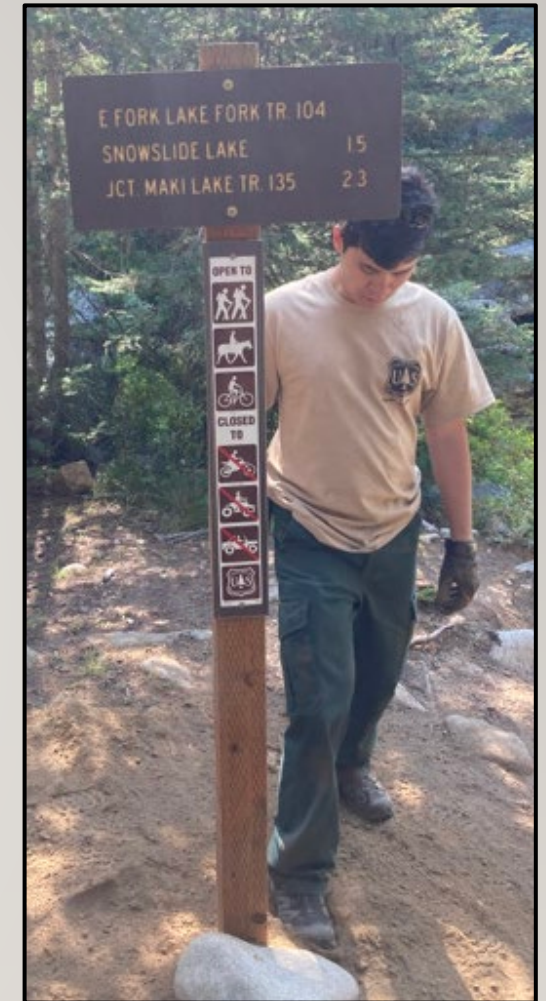
Sign issues – these are not all inclusive:

- 3M glue on one sign batch delaminated requiring second batch of signs to be installed
- Snow damage on aluminum signs – lesson learned on where to use these signs
- Porcupine damage on plywood signs – lesson learned on where to use these signs
- Vandalism – stealing and destruction of signs is an ongoing issue



RECENT INSTALLS OR
VERIFICATION SIGN IS OK





Trail Signs – New
Meadows & McCall RD

Trail Signs – New Meadows and McCall





BEAR AREA



FRENCH CREEK -
BURGDORF



E. FORK
WEISER

FISHER CREEK





GOOSE LAKE





JOHNSON CREEK



LICK CREEK



LOST VALLEY RESERVOIR



VARIOUS DISTANCE SIGNS



MIDDLE FORK WEISER





OLD
CASCADE



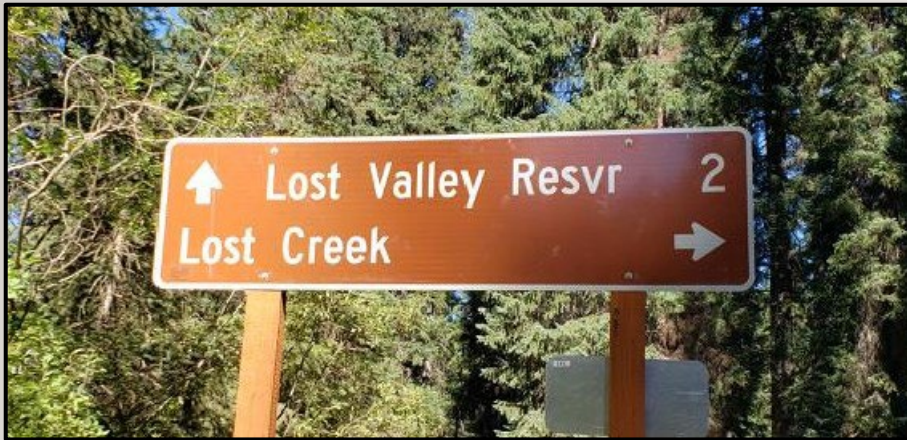
RAILROAD SADDLE





RAILROAD SADDLE

RAILROAD SADDLE





SALMON
RIVER



SOUTH FORK SALMON RIVER





SMOKEY
BOULDER





WARREN
WAGON AND
CHINOOK
CAMPGROUND

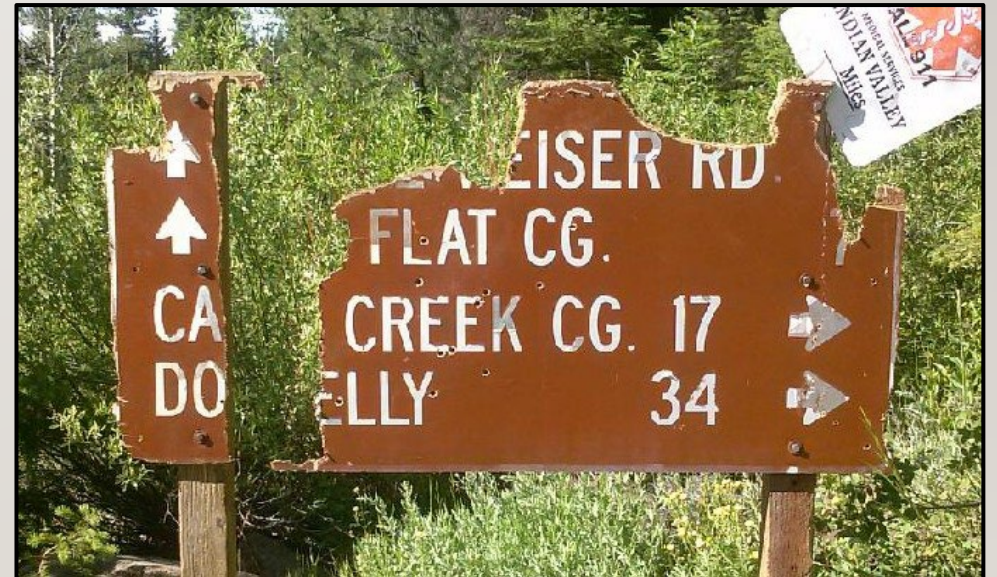
FUTURE INSTALLS AND REPLACEMENTS



FUTURE INSTALLS



FUTURE REPLACEMENTS





FUTURE REPLACEMENTS



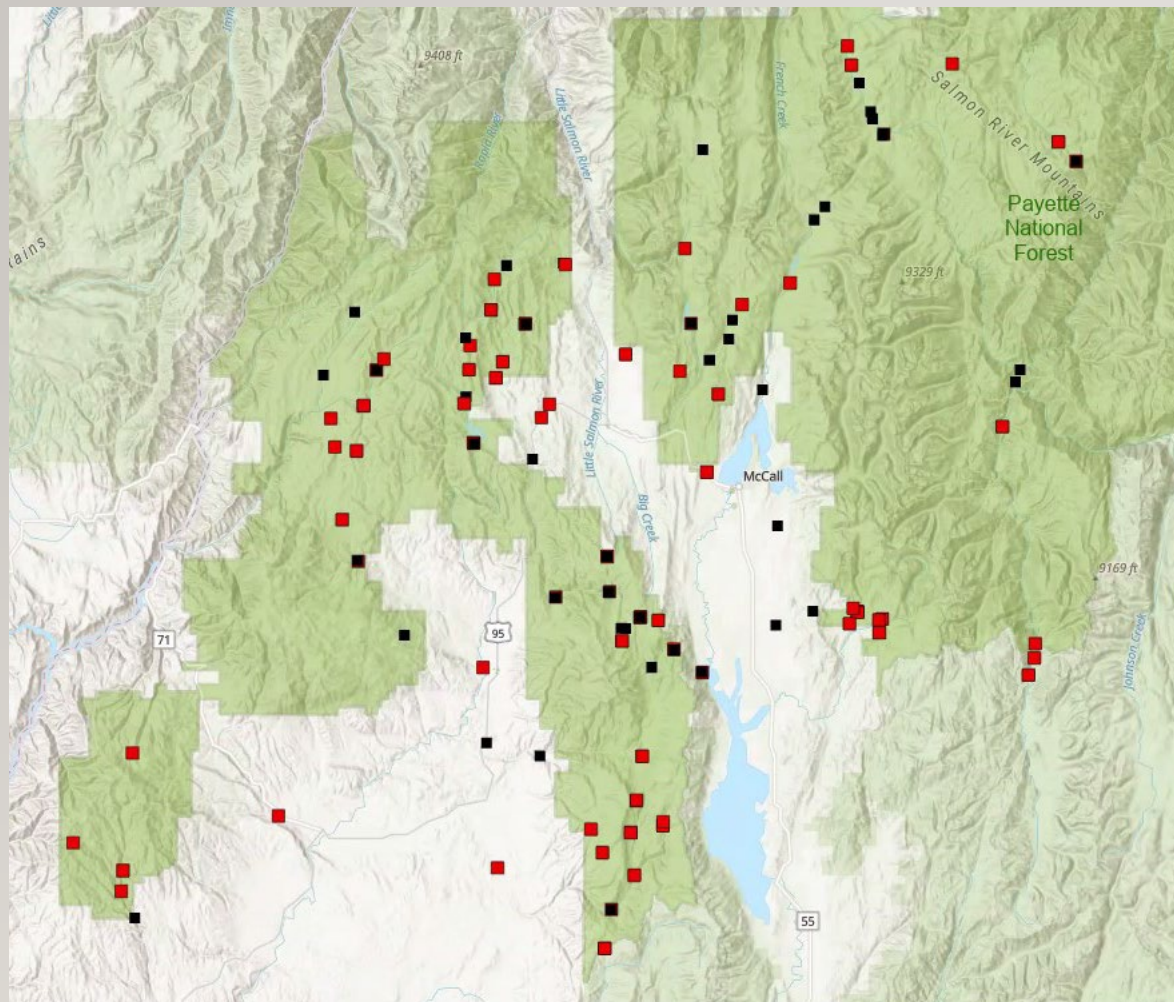
Sign stolen this summer



Sign stolen last summer



FUTURE REPLACEMENTS



- As of June 2022, signs needing to be replaced
- Signs in good condition

Finalizing sign order this month – have quotes and will order what we have \$ for. Installation planned for FY23.

Missing, damaged, or new sign desires,
contact:

Weiser and Council Ranger Districts

Jascha Zeitlin, 208-549-4224

jascha.zeitlin@usda.gov

McCall and New Meadows Ranger Districts

Mike Beach, 208-634-0415

michael.beach@usda.gov

Krassel Ranger District

Joshua Simpson, 208-634-0616

joshua.Simpson@usda.gov

Supervisor's Office

Emily Simpson, 208-634-0757

emily.Simpson@usda.gov

Will Perry, 208-634-0767

william.perry@usda.gov

Info we really need:

- Photos and road junction info (i.e. #100 & #257) of damaged or missing signs
- Trail junction info for missing or damaged signs
- Location and Why – if new sign desired

We can always use help installing signs!

Another navigation tool is Avenza Maps

Consider downloading the free Motor Vehicle Use Map from Avenza to your mobile device. These provide realtime location on the map using the GPS feature of your device.

WEST SIDE



EAST SIDE

